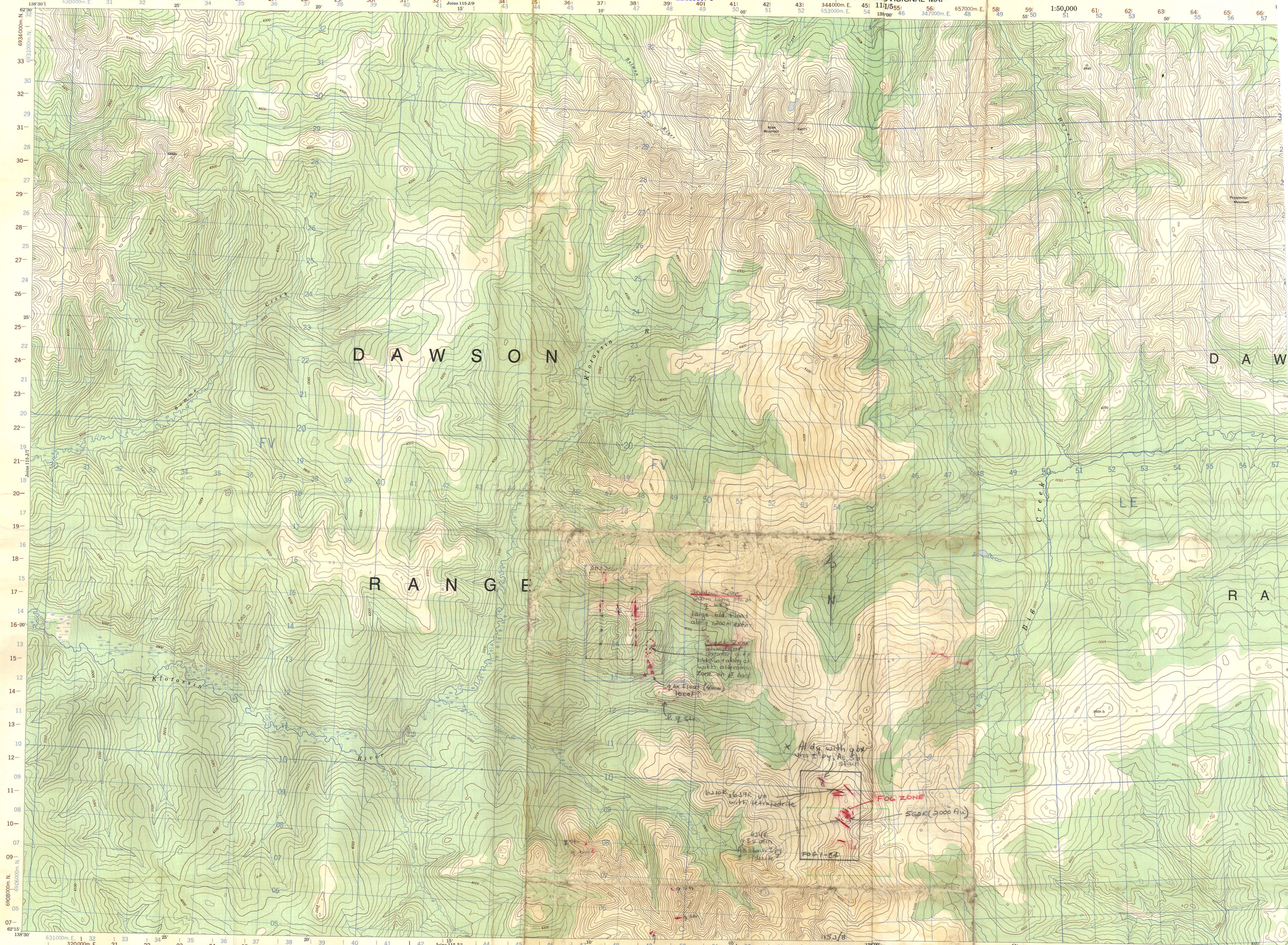


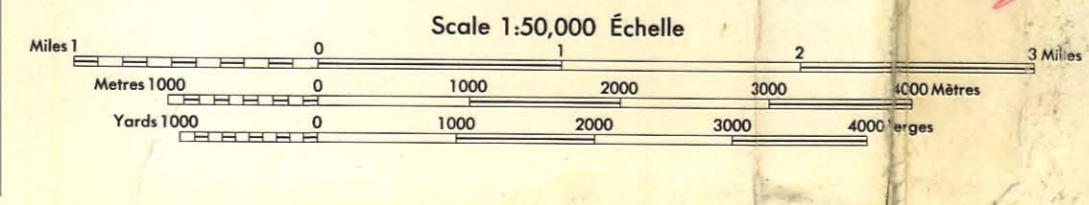
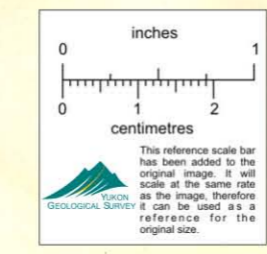
REIVED  
APR 3 1986  
LTD.



Produced 1968, by the SURVEYS AND MAPPING BRANCH, DEPARTMENT OF ENERGY, MINES AND RESOURCES, from aerial photographs taken in 1961, 1965. Field surveys 1965. Printed 1970.

This Provisional Map is equivalent to a standard map in respect of content.

APEX MOUNTAIN  
YUKON TERRITORY



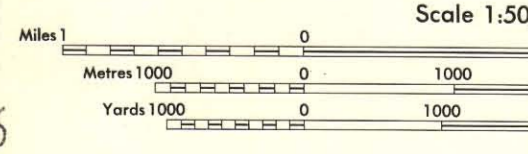
Cette carte provisoire équivaut à une carte régulière au point de vue précision de l'information.

Draité en 1968, par la DIRECTION DES LEVÉS ET DE LA CARTOGRAPHIE, MINISTÈRE DE L'ÉNERGIE, DES MINES ET DES RESSOURCES, à partir de photographies aériennes prises en 1961, 1965. Levés sur le terrain en 1965. Field surveys 1965-1966. Imprimé en 1970.

Copies may be obtained from the Map Distribution Office, Department of Energy, Mines and Resources, Ottawa.

This Provisional Map is equivalent to a standard map in respect of content.

PROSPECTOR  
YUKON TERRITORY



004706