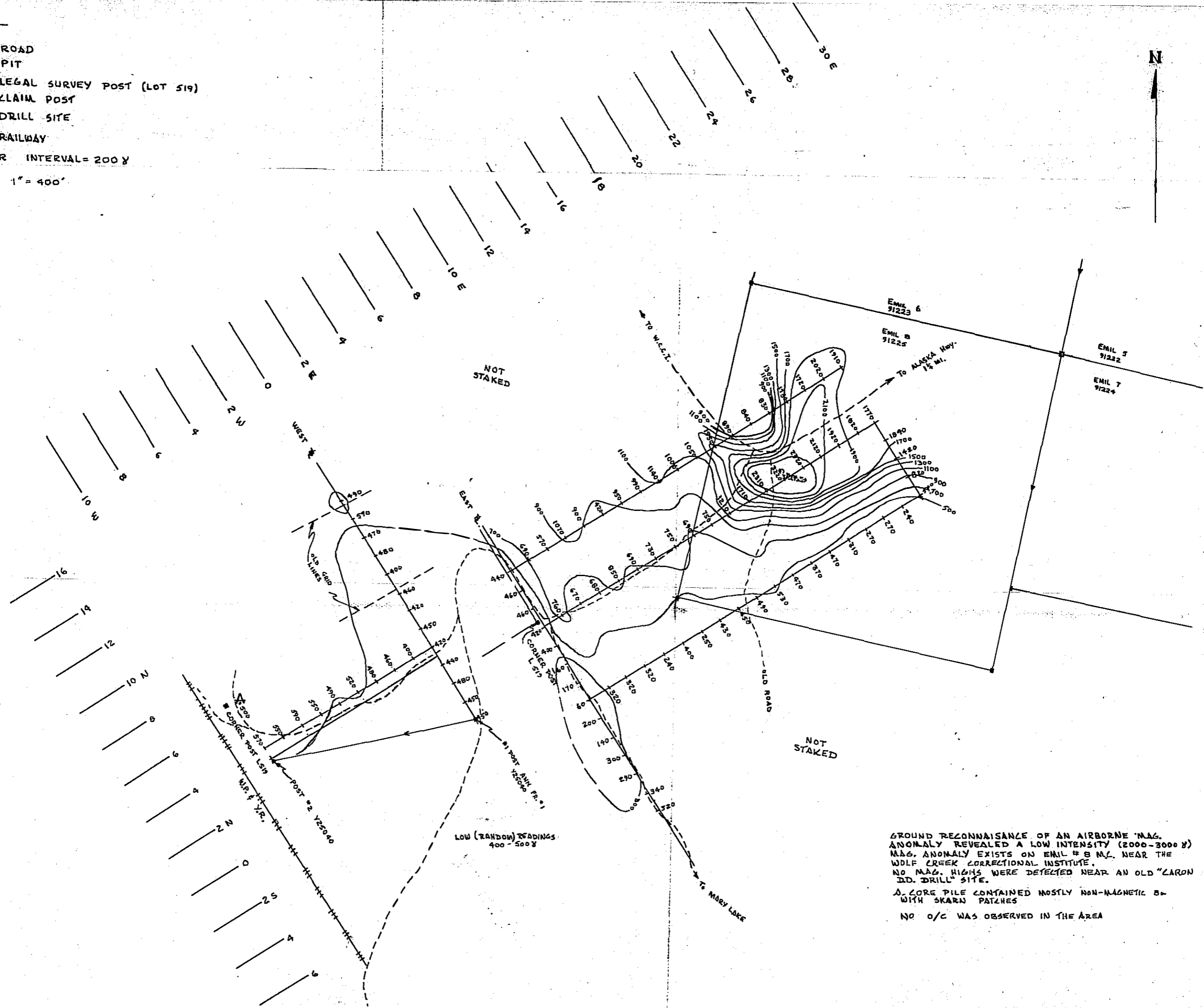
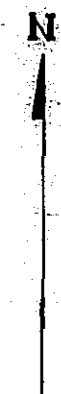


LEGEND

- ROAD
- PIT
- LEGAL SURVEY POST (LOT 519)
- CLAIM POST
- △ DRILL SITE
- RAILWAY

CONTOUR INTERVAL = 200 Y

SCALE 1" = 400'



LOW (RANDOM) READINGS
400 - 500 Y

GROUND RECONNAISSANCE OF AN AIRBORNE MAG. ANOMALY REVEALED A LOW INTENSITY (2000-3000 Y) MAG. ANOMALY EXISTS ON EMIL # 8 M.L. NEAR THE WOLF CREEK CORRECTIONAL INSTITUTE. NO MAG. HIGHS WERE DETECTED NEAR AN OLD "LARDON DD. DRILL" SITE.
A CORE PILE CONTAINED MOSTLY NON-MAGNETIC SAND WITH SKARN PATCHES
NO O/C WAS OBSERVED IN THE AREA