

DIAMOND DRILL RECORD

LOGGED BY P. Lewis

PROPERTY CARLOS - HARRIS OPTION - BLACK CLAIM BLOCK

D.D.H. No. KA-78-2 PAGE 8 of 11

LATITUDE 26+00-SW. (1966) BEARING OF HOLE N55E STARTED JULY 26/78

CLAIM No. BLACK + M.C.

DEPARTURE 8+50 SE DIP OF HOLE -60° COMPLETED AUGUST 2/78

← N DIRECTION AND DISTANCE FROM

ELEVATION 884.5^m (2902^{ft}) DIP TESTS _____ PROPOSED: _____
DEPTH Ultimate: 472'

NE. CLAIM POST

FOOTAGE		DESCRIPTION	Rec. Ft.	Sample No.	Footage		Sample Length	Assay					Assay x Feet				
FROM	TO				From	To		Pb	Zn	Ag	Au	Cu	Pb	Zn	Ag		
101.2	105.0	Quartz - Sericite Chlorite Phyllite. Same as 94.9 - 101.0 FAULT: 102.6 - 103.0 " 103.3 - 103.6 CA. F ₂ 40-45° @ 101.4 ^m	.8 2.0 2.0		101.2	103.0											
105.0	105.9	Sericite Schist. Light green. Light per point size mineral probably cordierite? disposed through that section of core. Broken core. Contains 95% sericite, 5% unformed mineral.	.9 .9		105.0	105.9											
105.9	114.5	Quartz - Sericite - Chlorite Phyllite. Greyish green. Minor buff coloured alteration at the top of	2.4 1.6 1.2 2.0		105.9	108.3											

RECEIVED
KANSAS STATE GEOLOGICAL SURVEY
AUG 15 1978

DIAMOND DRILL RECORD

LOGGED BY P. Lewis

PROPERTY CARLOS - HARRIS OPTION - BLACK CLAIM BLOCK

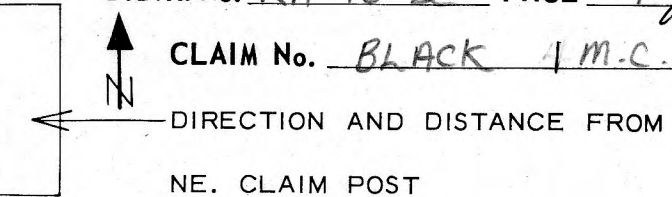
LATITUDE 26+00-SW (1966) BEARING OF HOLE N55E STARTED JULY 26/78

DEPARTURE 8+50-SE DIP OF HOLE -60° COMPLETED AUGUST 2/78

ELEVATION 884.5^m (2902^{ft}) DIP TESTS _____ DEPTH Proposed: _____ Ultimate: _____

D.D.H. No. KA-78-2 PAGE 9 of 11

CLAIM No. BLACK 1 M.C.



FOOTAGE		DESCRIPTION	Rec. Ft.	Sample No.	Footage		Sample Length	Assay					Assay x Feet.		
FROM	TO				From	To		Pb	Zn	Ag	Au	Cu	Pb	Zn	Ag
		section: ^{105.9-106.4} Core moderately fissile. 15% quartz 60% 20% chlorite. Section becoming more chlorite towards the base. Again minor pyrite occurring as blebs & lenses. One or two blebs of chalcopyrite. @ 113.0 ^m Small shear at top of section. 106.4 - 107.0. Core fractured & crumpled. 111.0 - 111.4. Intensely sheared, fractured and crumpled. CA - F ₂ : 75° @ 107.5 ^m , 65° @ 110.7 70° @ 114.2	1.6 2.0		112.5	114.5									
114.5	117.7	Mtd. andesite (or tuffaceous?) Medium - dark green. Massive, containing 65% chlorite	3 3.2		114.5	117.7									

BUREAU OF LAND MANAGEMENT
 U.S. DEPARTMENT OF THE INTERIOR
 DENVER, COLORADO 80225

DIAMOND DRILL RECORD

LOGGED BY P. Lewis

PROPERTY CARLOS - HARRIS OPTION - BLACK CLAIM BLOCK

LATITUDE 26+00 SW (1966) BEARING OF HOLE N55E STARTED JULY 26/78

DEPARTURE 8+50 SE DIP OF HOLE -60° COMPLETED AUGUST 2/78

ELEVATION 884.5^m (2902^{FT}) DIP TESTS _____ DEPTH Proposed: Ultimate:

D.D.H. No. KA-78-2 PAGE 10 of 11

CLAIM No. BLACK 11M-C.

DIRECTION AND DISTANCE FROM

NE. CLAIM POST



FOOTAGE		DESCRIPTION	Rec. Ft.	Sample No.	Footage		Sample Length	Assay					Assay x Feet				
FROM	TO				From	To		Pb	Zn	Ag	Au	Cu	Pb	Zn	Ag		
		20% quartz, 5% dolomite? Dolomite is dispersed through out core in a spotty type pattern and also occupies space in fracture along with quartz. Fractures occupied by quartz & dolomite numerous but follow no preferred orientation. 30°-65° scattered lules of pyrite.															
117-7	139.4	Magnetite bearing matrix. Andesite. Similar to section 114.5-117.7 but contains 5% magnetite and minor pyrrhotite. again core exhibit numerous qty dolomite filled fractures, the but fractures also contain minor sericite &	.8 1.5 1.2 1.6 8.2 9.5 2.6 3.1 6.0 6.0		117.7	119.2											
						120.8											
						130.3											
						133.4											
						139.4											

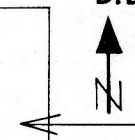
RECEIVED
 M.C.S. 81312
 WME2 LTD.

DIAMOND DRILL RECORD

LOGGED BY P. Lewis

PROPERTY CARLOS - HARRIS OPTION BLACK CLAIM BLOCK
 LATITUDE 26+00 SW (1966) BEARING OF HOLE N55E STARTED JULY 26/78
 DEPARTURE 8+50 SE DIP OF HOLE -60° COMPLETED AUGUST 2/78
 ELEVATION 884.5 (2902') DIP TESTS _____
 Proposed: _____
 DEPTH Ultimate: _____

D.D.H. No. KA-78-2 PAGE 11 of 11
 CLAIM No. BLACK I.M.C
 DIRECTION AND DISTANCE FROM
 NE. CLAIM POST



FOOTAGE		DESCRIPTION	Rec. Ft.	Sample No.	Footage		Sample Length	Assay					Assay x Feet				
FROM	TO				From	To		Pb	Zn	Ag	Au	Cu	Pb	Zn	Ag		
		epidote 118.1 - 119.1 - Fault. Core broken & crumpled. Contact with lower phyllite unit 55° to C.A.															
139.4	139.8	chlorite - sericite Phyllite Core extremely fissile. Contains 90% chlorite 10% sericite.	.4		139.4	139.8											
139.8	143.8	Magnetite bearing meta andesite. Same unit as 117.7 ^m - 139.4 ^m	4		139.8	143.8											
	143.8	END OF HOLE.															
		REMARKS:															
		Electromagnetic anomaly probably caused by near surface graphite phyllite.															

with up to 5% magnetite which the margins of the
 in this section are heavily sheared & sericitized
 with a marked to total destruction of magnetite!

* Additional Remarks by Mr. Murton - Sections of "meta andesite" usually exhibit an unshattered, massive appearing core

Interval		DESCRIPTION	Recovery	Sample No	Interval		Sample Length	Assay					Assay x				
From	To				From	To		Pb	Zn	Ag	Au	Cu	Pb	Zn	Ag		
		AT RIGHT ANGLES TO FOLIATION LADDER-LIKE															
		AT 148 FINE GALENA ± QTZ(?)	57.7M														
189	189.5	(?) / ROCK CHANGE - GRAPHITE CORE LOST / GOUGE															
187.5(?)	193	QTZ - BLUE-GREY MOTTLED 2% PYRITE AS WISPY BLOBS, DISCONTINUOUS BANDS AND AT 189 1/2 1/4" WHITE QTZ BAND AT 20° CUTS 55° PYRITE BAND	58.8M														
193	222.5	GRAPHITIC - QTZ - PYRITE PHYLLITIC ROCK - MOTTLED / BLACK GRAPHITE, BLUE GREY, QTZ AND PYRITE BANDS / LINATION POOR TO GOOD, CORE OFTEN BROKEN. MINOR CHALCO- PYRITE IN BLUE QTZ MINOR GREEN CHLORITE AND SERPENTINE. AVE. PYRITE 5-10% WITH SEE SHORT SECTIONS OF 25-40% PYRITE GRAPHITE SHINY AND POLISHED ON CORE BREAKS AT 202.2 2" HARD - 5 - APPLE GREEN CORE CUT BY THIN QTZ SECTIONS	67.8														
218	222.5	GRAPHITIC PHYLLITE															



