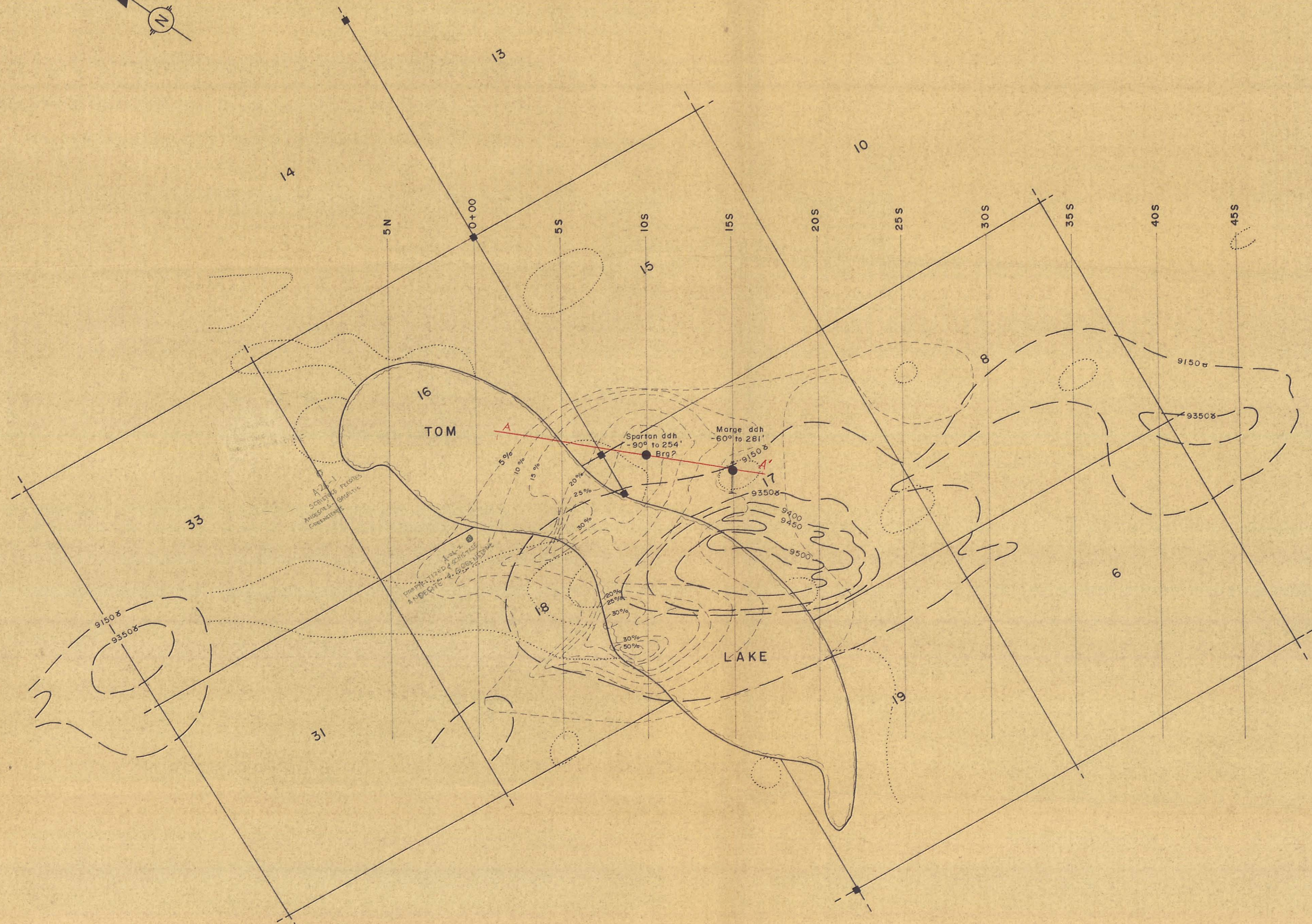
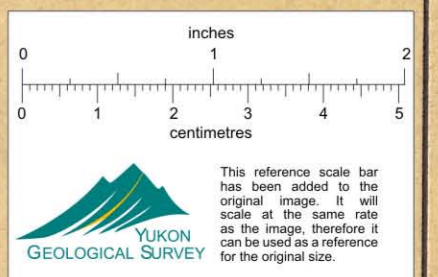


CCS 74-5
© Basic Geomorphology
Scale 1:5000



--- GROUND MAG
- - - GROUND E.M.
..... Zn GEOCHEMISTRY (>200 ppm)



KERR ADDISON MINES LTD VANCOUVER, B.C.	
COMPOSITE PLAN GROUND MAG, E.M., GEOCHEMISTRY (Zn)	
OLD DAVIE CLAIM AREA Yukon Territory	
N.T.S - 105 G - 14	SCALE - 1 inch = 400 ft
DRAWN BY: J.W. Murton	DATE: APRIL, 1978

(Black Claims) 004955