

106 E      004971

Iron claims in the Wind-

Bonnet Plume River area

Sept 25 1958

106 E

106 E

# INTER-OFFICE CORRESPONDENCE

FROM: Rod Macrae  
TO: E. O. Chisholm

DATE: Sept 25th, 1958  
SUBJECT:



A		N
✓	W.S.R.	✓
	R.J.B.	
✓	E.O.C.	✓
✓	H.A.P.	✓
	R.D.S.	✓
	B.C.B.	
	G.M.R.	
	E.L.D.	
	J.I.K.	
✓	(E.C.)	

MESSAGE  
(TO BE COMPLETED IN TRIPLICATE)

Dear Ted:

Attached is a sketch of the iron claims staked in August on the Wind - Bonnet Plume Rivers, from which I sent you a sample or two recently.

There are 56 -160 acre claims staked. Certificates of recording have not been received by the owners yet, since they have not been approved by the Minister in Ottawa.

32 Claims were staked by the Hrebin-Bessners group and 24 by Alex Wark and the Mervyn brothers. Paul Cavanaugh examined the latter group and labeled it a showing of iron stain Hrebin says he has 60 ft width of mixed hematite and magnetite

I am of the opinion that the best showing would never make an iron deposit regardless of location, however, in view of the old reports of iron that we have both heard, think there is a strong possibility of a larger deposit than that found to date.

I understand the best showing has not been examined until recently when Kulan went in for Newmont, about a week ago. The Wark showing was examined by Coates & Miller for Conwest, and originally by Cavanaugh.

The copper showing on the Wind is the one trenched and sampled by McFarland for Canex last year. It has been restaked by Caley and partners and is a 2% plus or minus chalcopyrite in siderite, having better than 1000 ft length and widths av 10 ft.

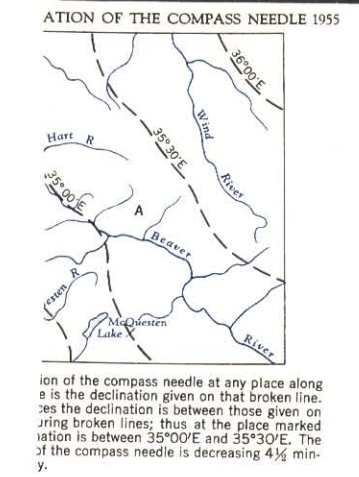
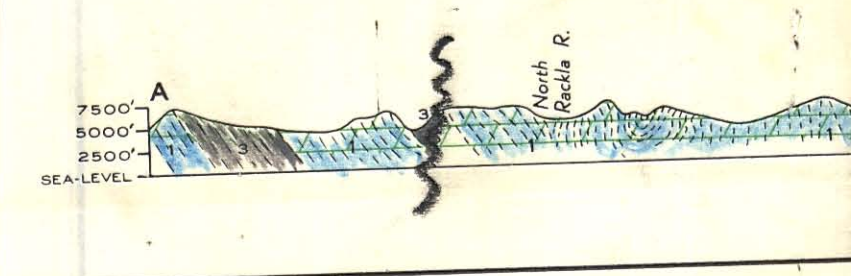
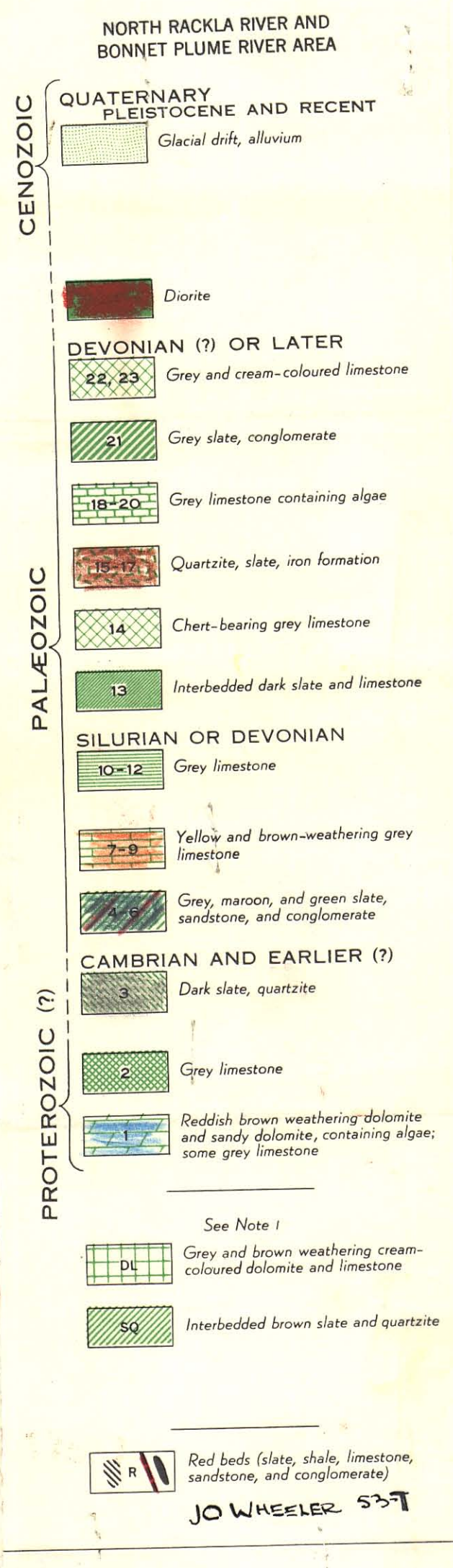
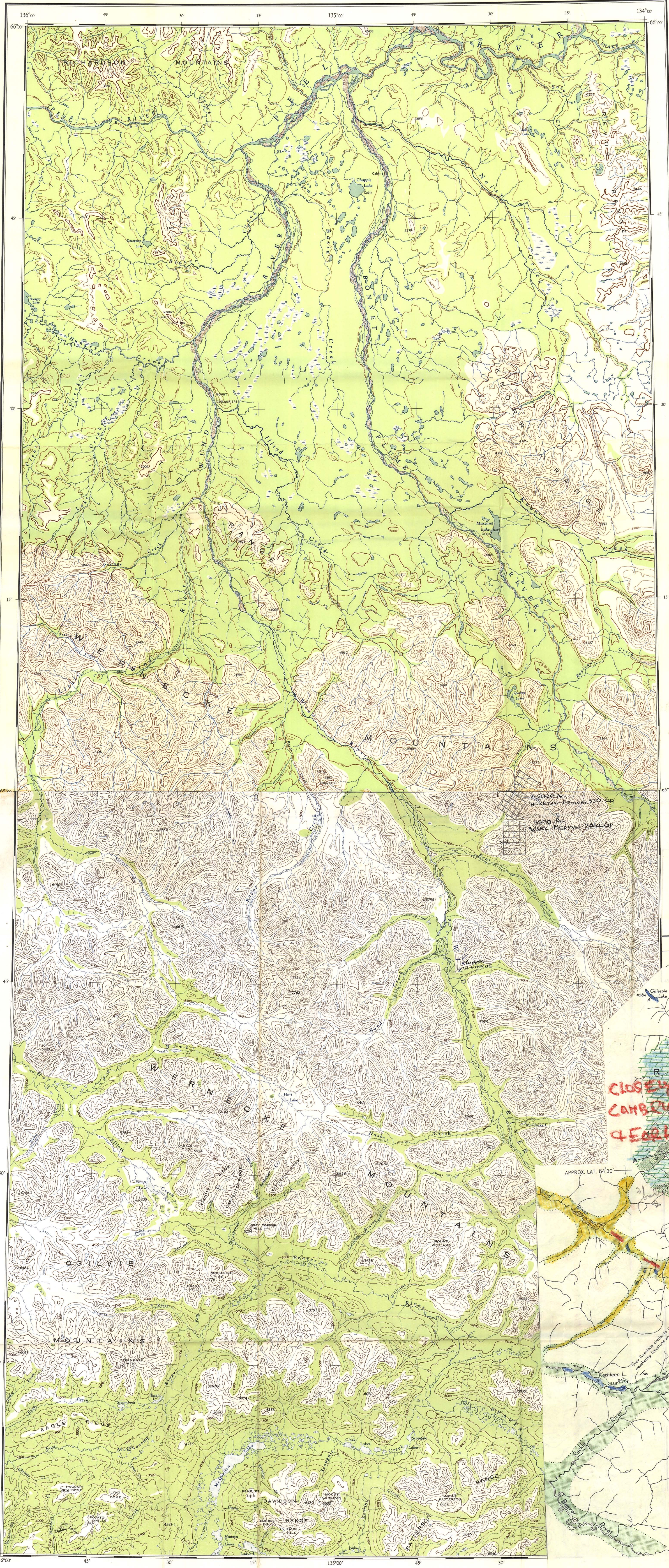
Wheeler's mapping in the area would suggest the country rocks are precambrian sediments,  
Coord Locns: Fe 65-00:134-13  
Cu 64-47:132-35

Regards,  
*(Signature)*

Roderick Macrae

### INSTRUCTIONS FOR USE OF THIS FORM

Form to be completed in triplicate by originator. Two copies - No. 1 and No. 2 - to be forwarded to addressee. Copy No. 3 to be retained in originator's file until reply received. Addressee to complete reply in duplicate on reverse side of sheets 1 and 2 and return No. 1 to originator. In following this procedure both parties have the complete message and reply on one sheet of paper.



Produced and printed by the Survey and Mapping Branch, Department of Mines and Technical Surveys, 1957, from an photographic base in 1949.

Universal Transverse Mercator Projection

Contour Interval 500 Feet  
Elevations in Feet above Mean Sea Level  
North American Datum 1927.

Scale 1:250,000  
1 Inch to 4 Miles Approximately

Scale in Miles and Kilometers

Scale in Inches and Centimeters

**NASH CREEK**  
YUKON TERRITORY

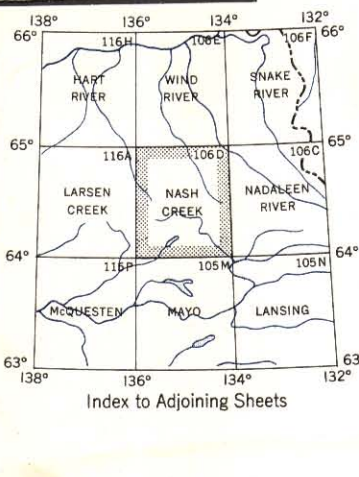
Scale 1:250,000  
1 Inch to 4 Miles Approximately

Scale in Miles and Kilometers

Scale in Inches and Centimeters

Streams:  
intermittent or dry  
indicated  
Ripids, falls  
Marsh or swamp  
Contour:  
elevation  
depression  
approximate  
Wooded area

Regions or other names  
Trail or portage  
Village or settlement  
Post office  
Building or cabin  
Mine  
Horizontal control point  
Astronomical quadrant  
Spot elevation (in feet)



NASH CREEK 106D