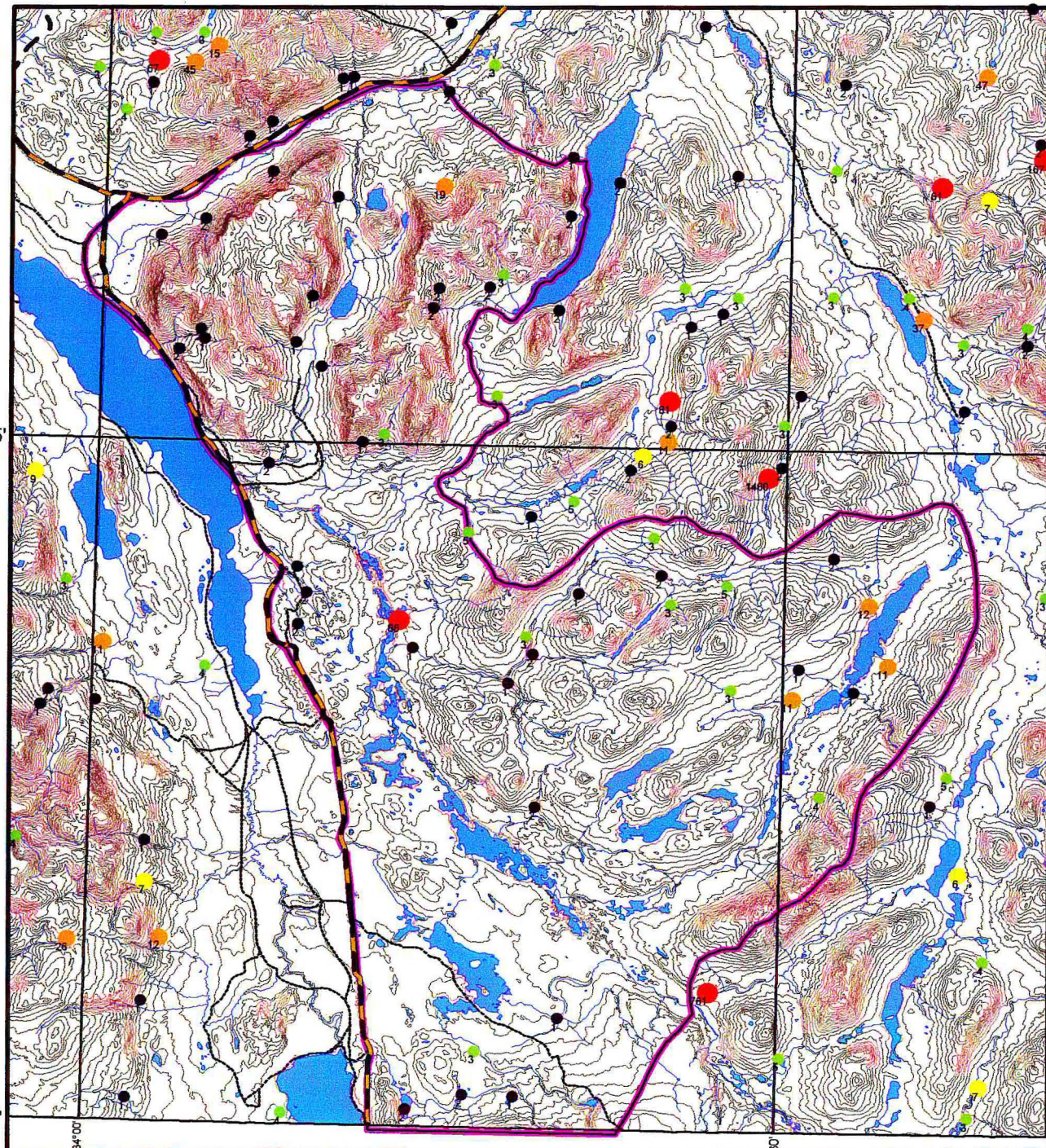


Regional Stream Sediment Geochemistry in Proposed Snafu SMA Area



Scale 1:250 000



Gold - Au

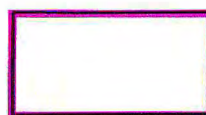
- 0 - 2 ppb
- 3 - 5 ppb
- 6 - 10 ppb
- 11 - 50 ppb
- 51 - 1460 ppb

Detection Limit: 2 ppb

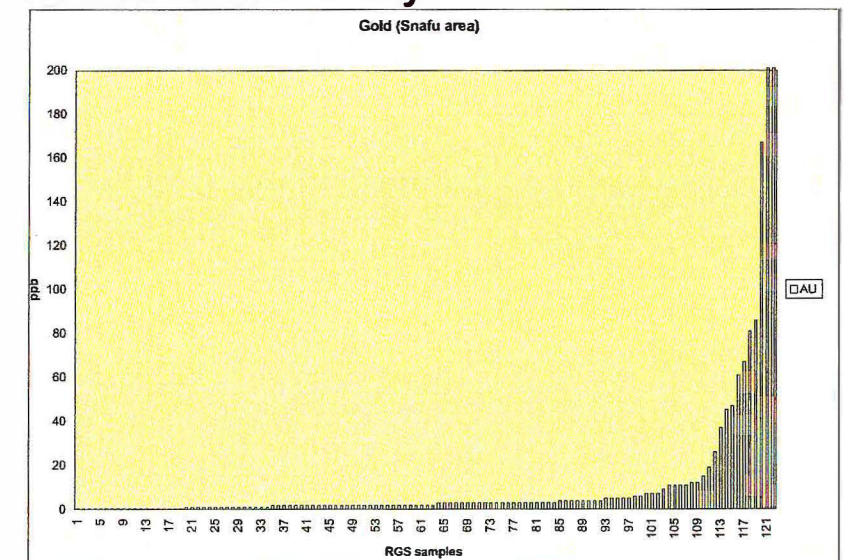
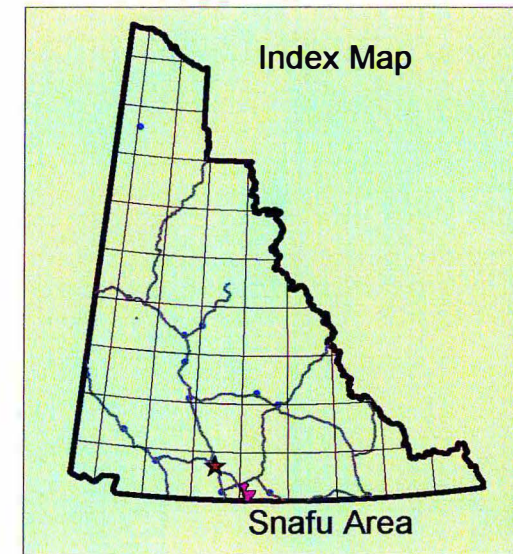
Method: INAA- instrumental neutron activation analysis

# Samples (n)	122
Maximum	1460
Median	2

GSC Open File 1217



Proposed Snafu / Tarfu
Natural Environment Park
Special Management Area
(September 2002 outline)

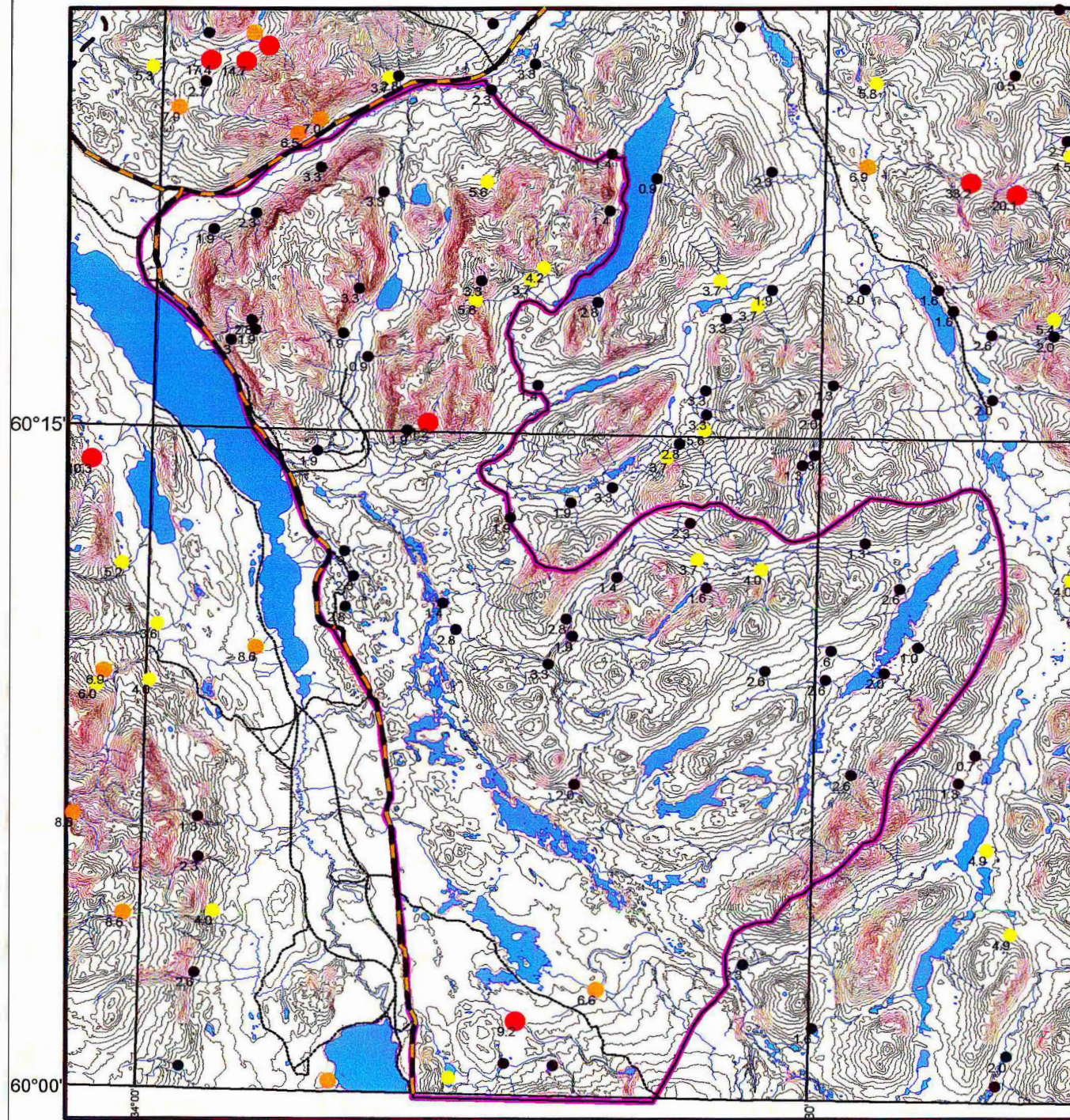


Confidential

004997

RGS
Gold - Au

Regional Stream Sediment Geochemistry in Proposed Snafu/Tarfu SMA Area

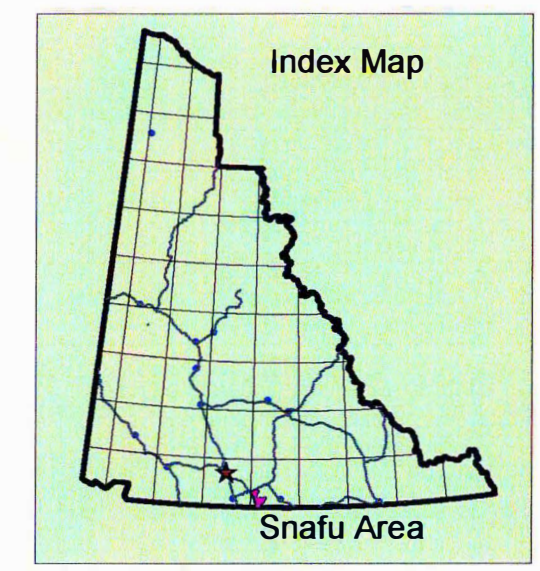


Scale 1:250 000



Arsenic - As

- 0 - 3.5 ppm
- 3.5 - 6 ppm
- 6.1 - 9 ppm
- 9.1 - 33.2 ppm

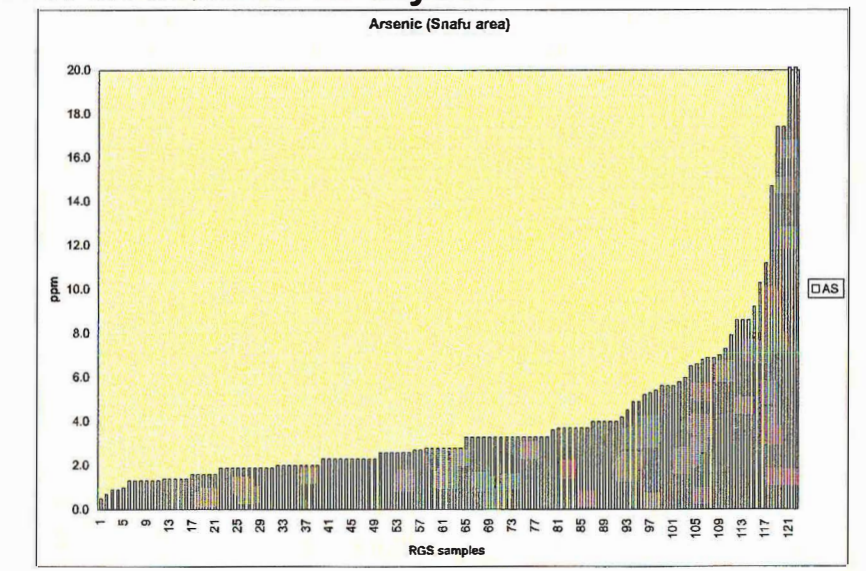


Detection Limit: 0.5 ppm
 Method: INAA- instrumental neutron activation analysis

# Samples (n)	122
Maximum	33.2
Median	2.8

GSC Open File 1217

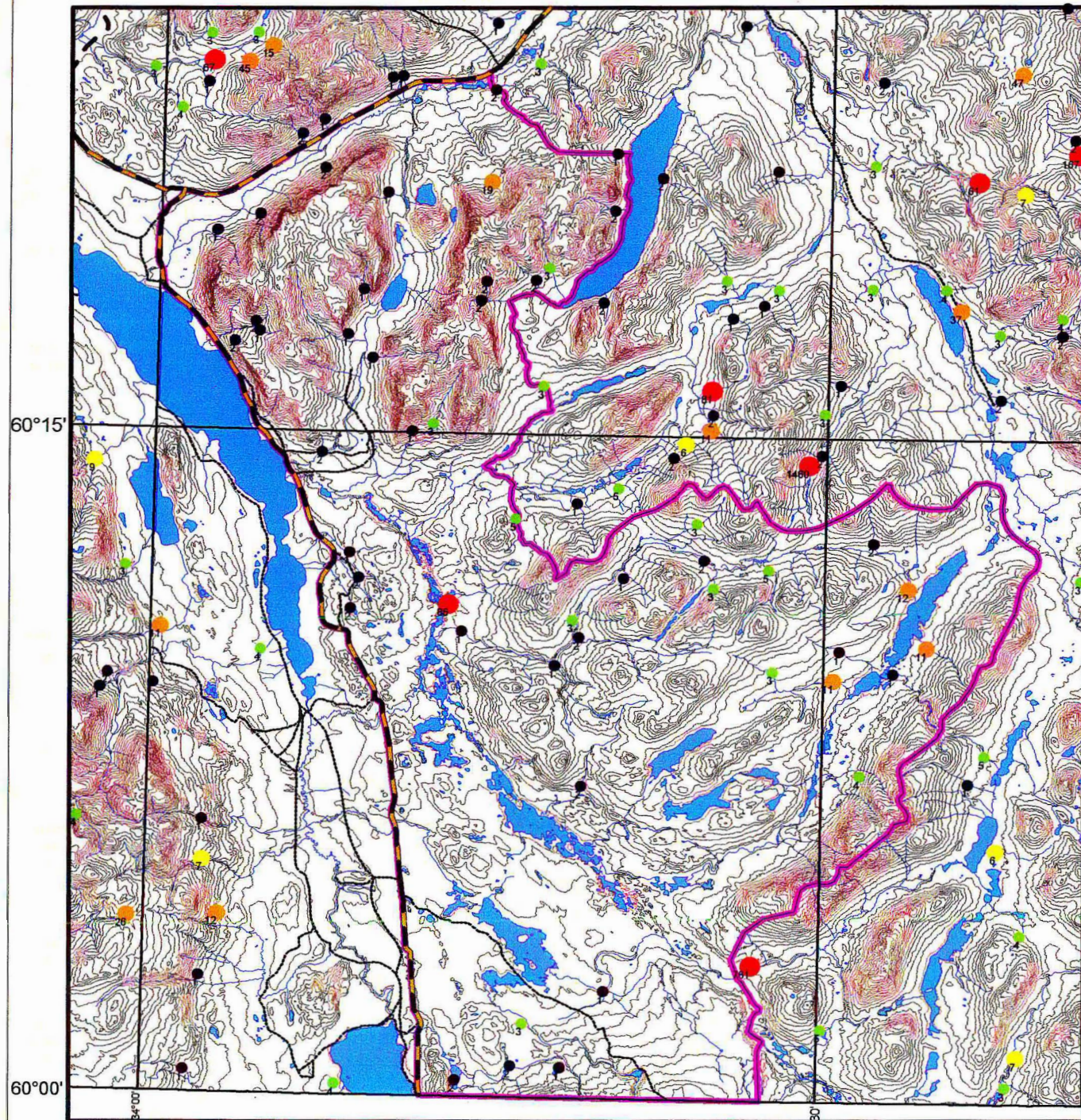
Proposed Snafu / Tarfu
 Natural Environment Park
 Special Management Area
 (September 2002 outline)



Confidential

RGS
 Arsenic - As

Regional Stream Sediment Geochemistry in Proposed Snafu/Tarfu SMA Area

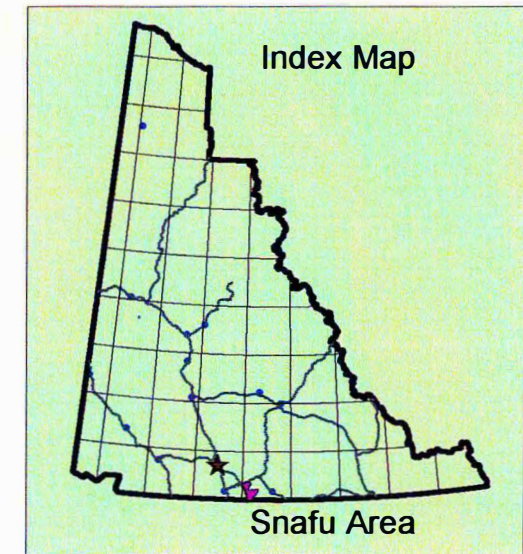


Scale 1:250 000



Barium - Ba

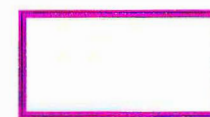
- 0 - 1300 ppm
- 1301 - 1500 ppm
- 1501 - 1700 ppm
- 1701 - 2060 ppm



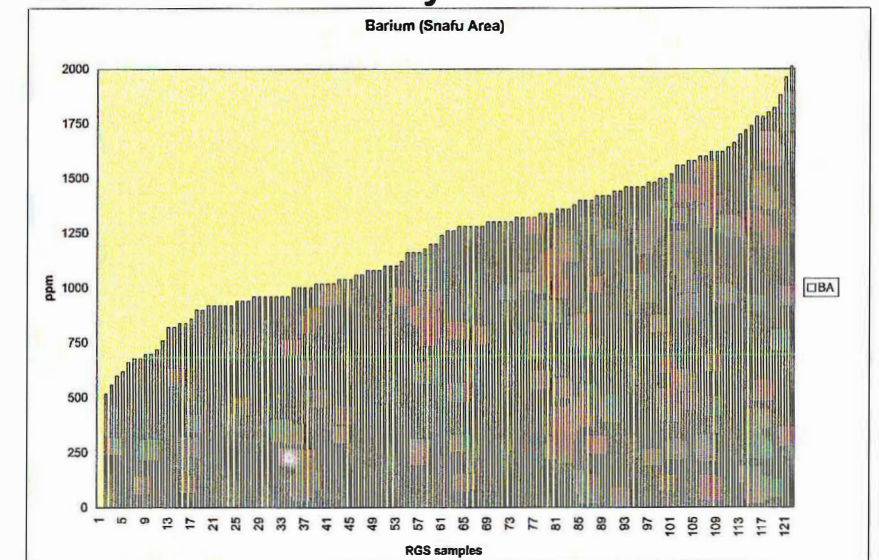
Detection Limit: 50 ppm
Method: INAA- instrumental neutron activation analysis

# Samples (n)	122
Maximum	2060
Median	1250

GSC Open File 1217



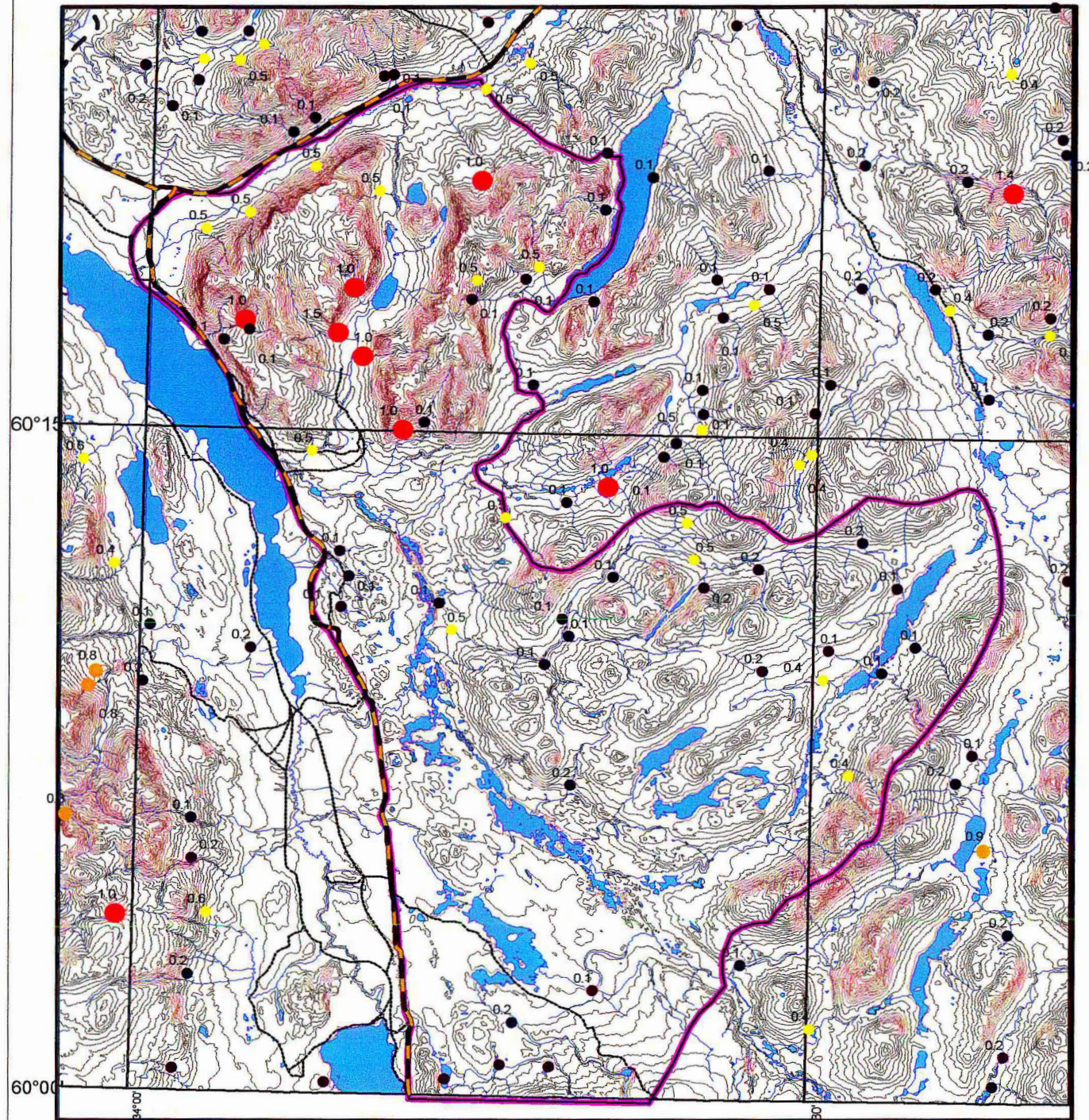
Proposed Snafu / Tarfu
Natural Environment Park
Special Management Area
(September 2003 outline)



Confidential

RGS
Barium - Ba

Regional Stream Sediment Geochemistry in Proposed Snafu /Tarfu SMA Area

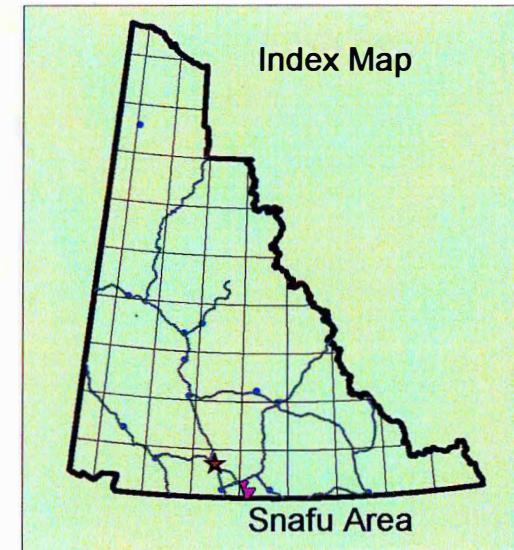


Scale 1:250 000



Cadmium - Cd

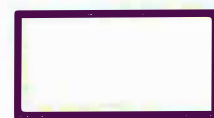
- 0 - 0.3 ppm
- 0.31 - 0.6 ppm
- 0.61 - 0.9 ppm
- 0.91 - 1.5 ppm



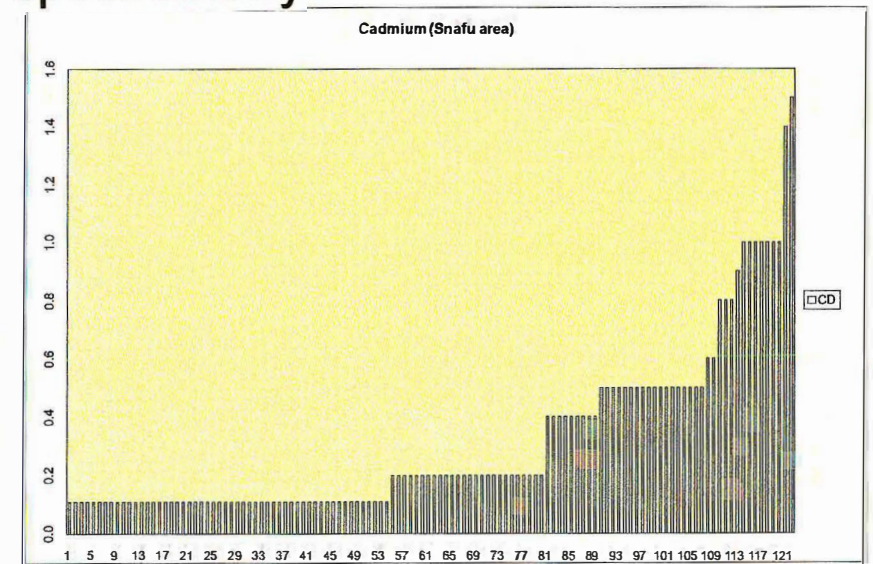
Detection Limit: 0.2 ppm
 Method: AAs- atomic absorption spectrometry

# Samples (n)	122
Maximum	1.5
Median	0.2

GSC Open File 1217



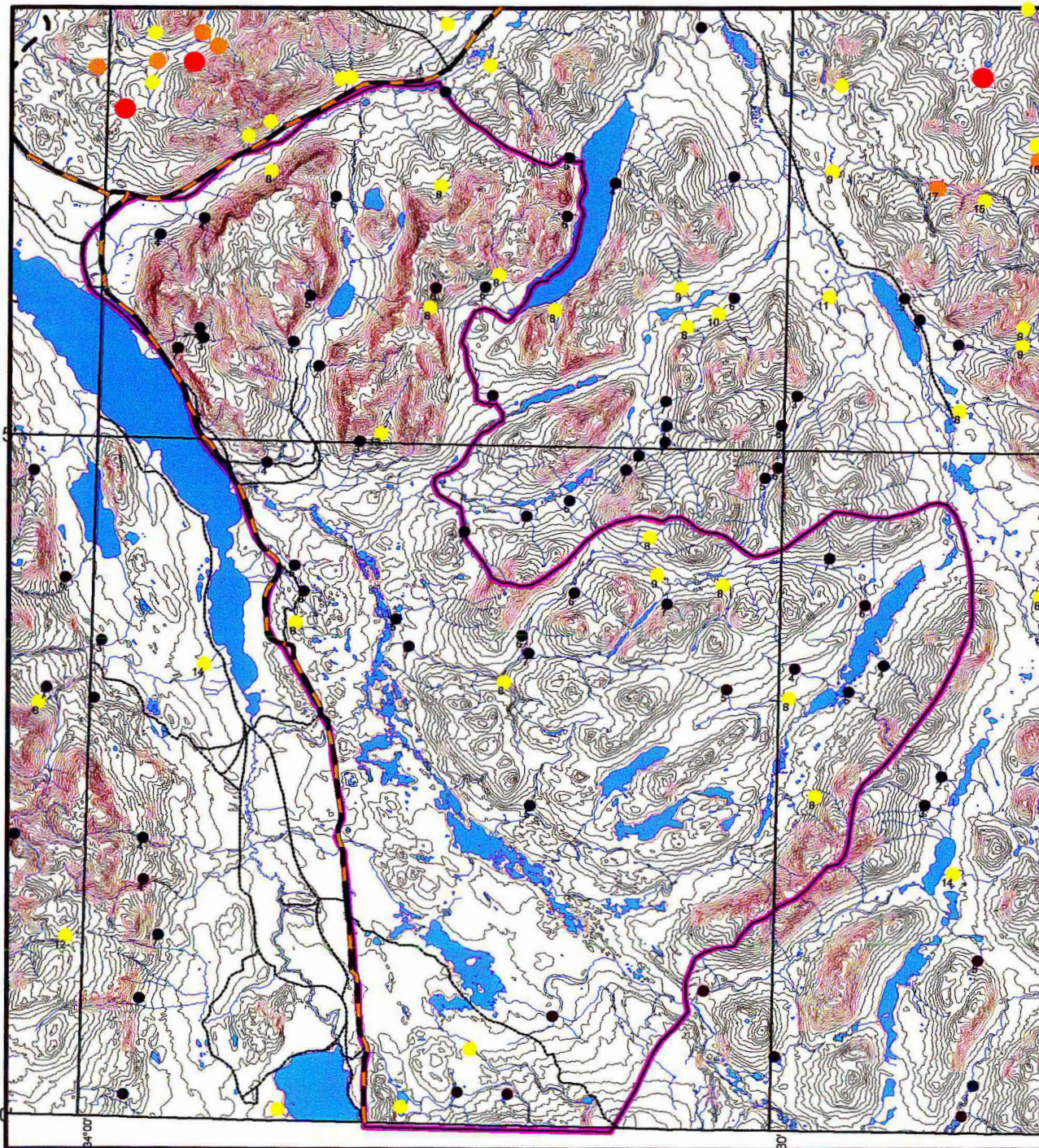
Proposed Snafu / Tarfu
 Natural Environment Park
 Special Management Area
 (September 2002 outline)



Confidential

RGS
 Cadmium - Cd

Regional Stream Sediment Geochemistry in Proposed Snafu/Tarfu SMA Area



60°15'

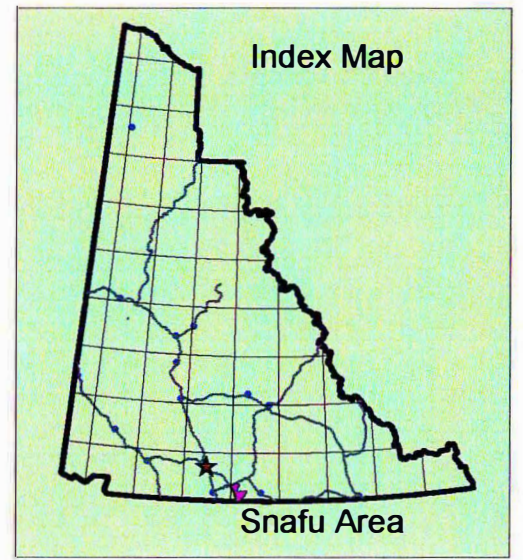
60°00'

Scale 1:250 000



Cobalt - Co

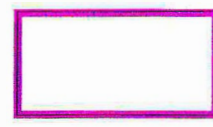
- 0 - 7 ppm
- 7.1 - 15 ppm
- 15.1 - 20 ppm
- 20.1 - 30 ppm



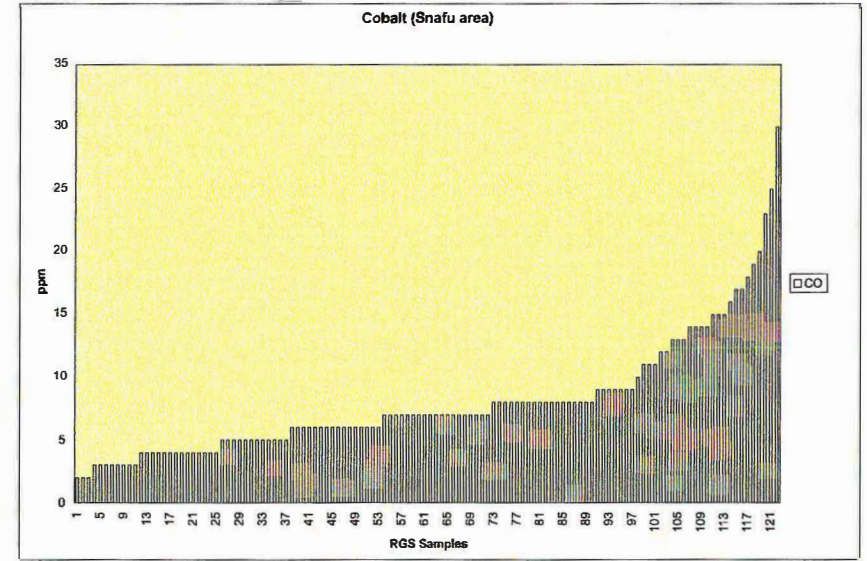
Detection Limit: 2 ppm
Method: AAs- atomic absorption spectrometry

# Samples (n)	122
Maximum	30
Median	7

GSC Open File 1217



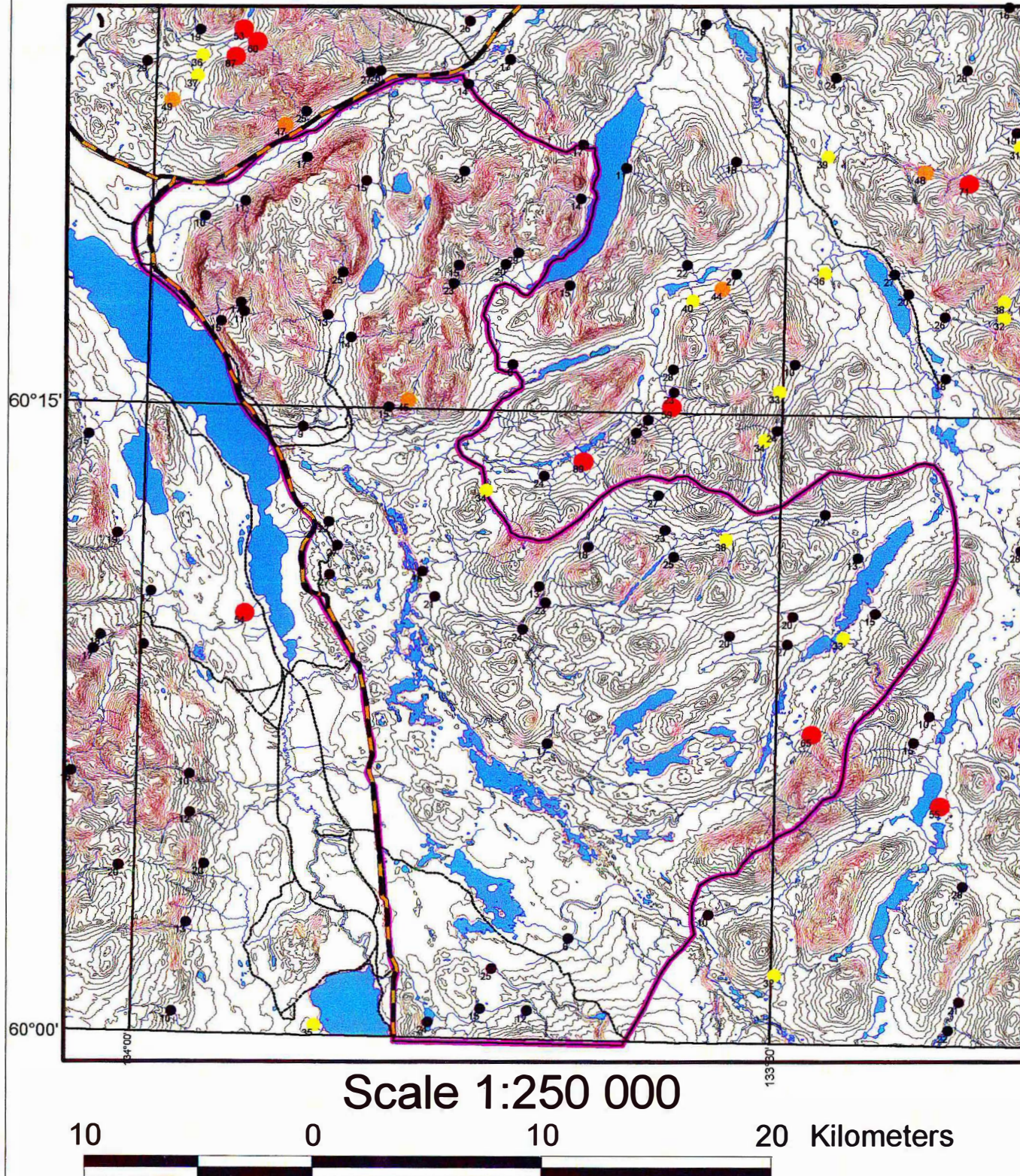
Proposed Snafu / Tarfu
Natural Environment Park
Special Management Area
(September 2002 outline)



Confidential

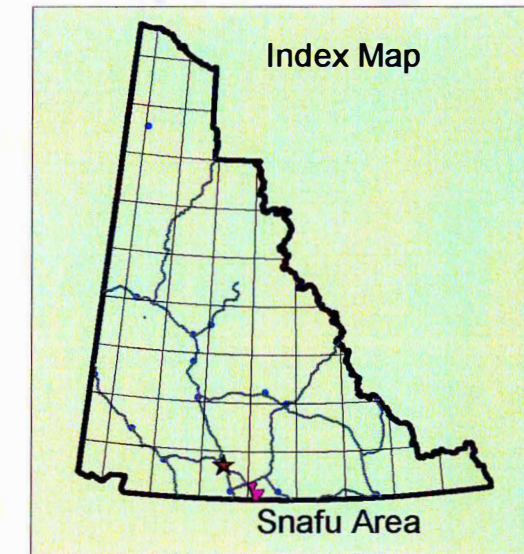
RGS
Cobalt - Co

Regional Stream Sediment Geochemistry in Proposed Snafu/Tarfu SMA Area



Copper - Cu

- 0 - 30 ppm
- 30.1 - 40 ppm
- 40.1 - 50 ppm
- 50.1 - 89 ppm

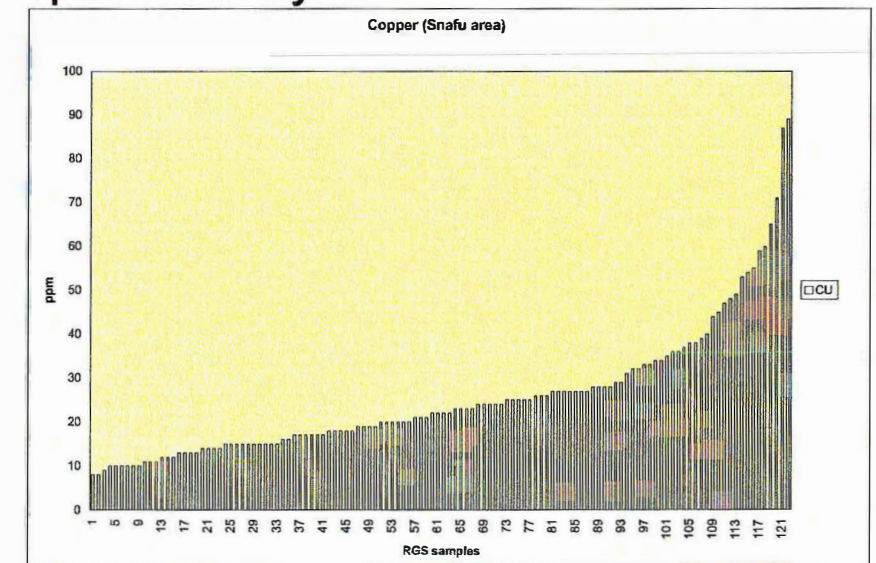


Detection Limit: 2 ppm
 Method: AAS- atomic absorption spectrometry

# Samples (n)	122
Maximum	89
Median	22

GSC Open File 1217

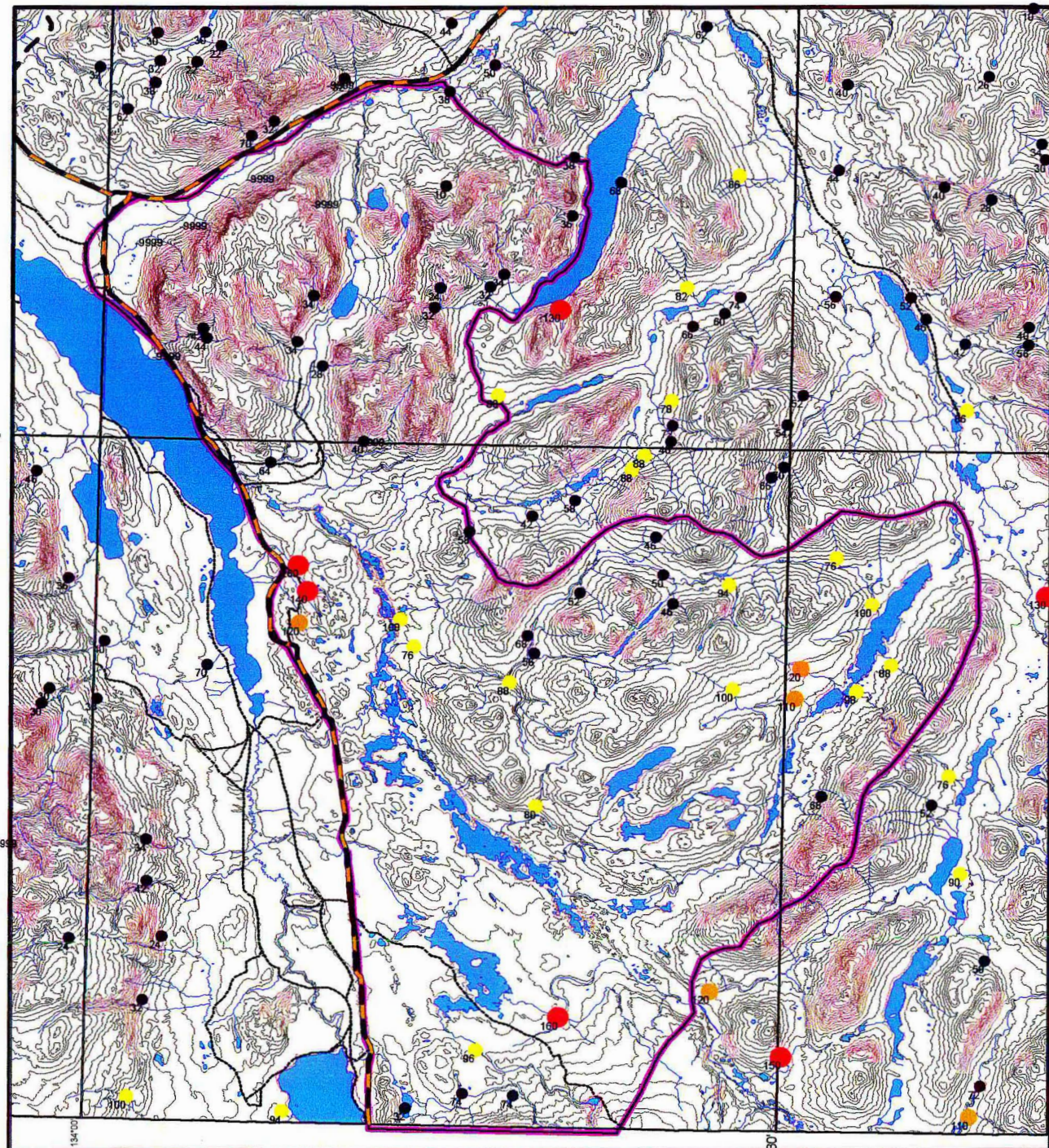
 Proposed Snafu / Tarfu Natural Environment Park Special Management Area (September 2002 outline)



Confidential

RGS
 Copper - Cu

Regional Stream Sediment Geochemistry in Proposed Snafu /Tarfus SMA Area

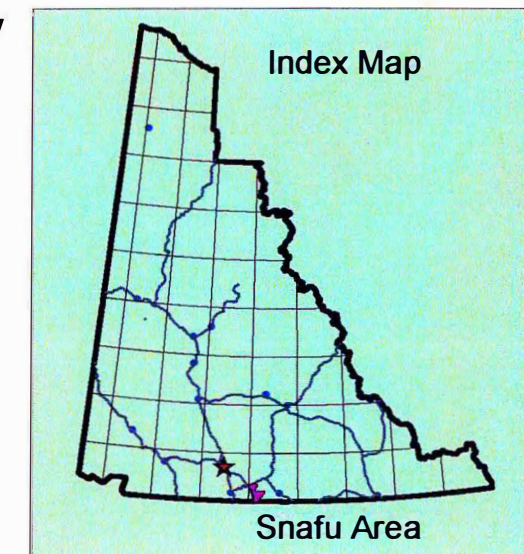


Scale 1:250 000



Fluorine in water - F_w

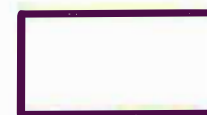
- 0 - 75 ppb
- 75.1 - 100 ppb
- 100.1 - 125 ppb
- 100.1 - 260 ppb



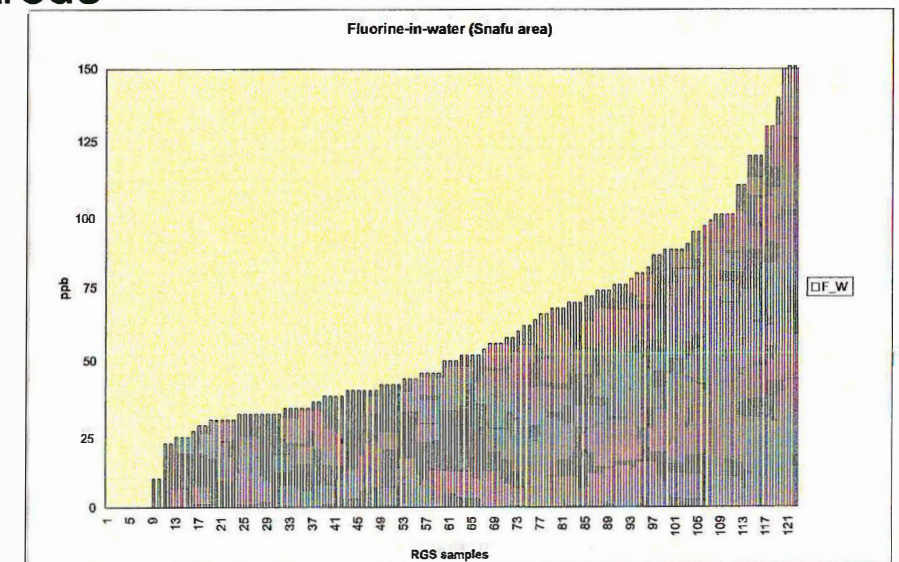
Detection Limit: 20 ppb
Method: ISE - ion selective electrode

# Samples (n)	122
Maximum	260
Median	50

GSC Open File 1217



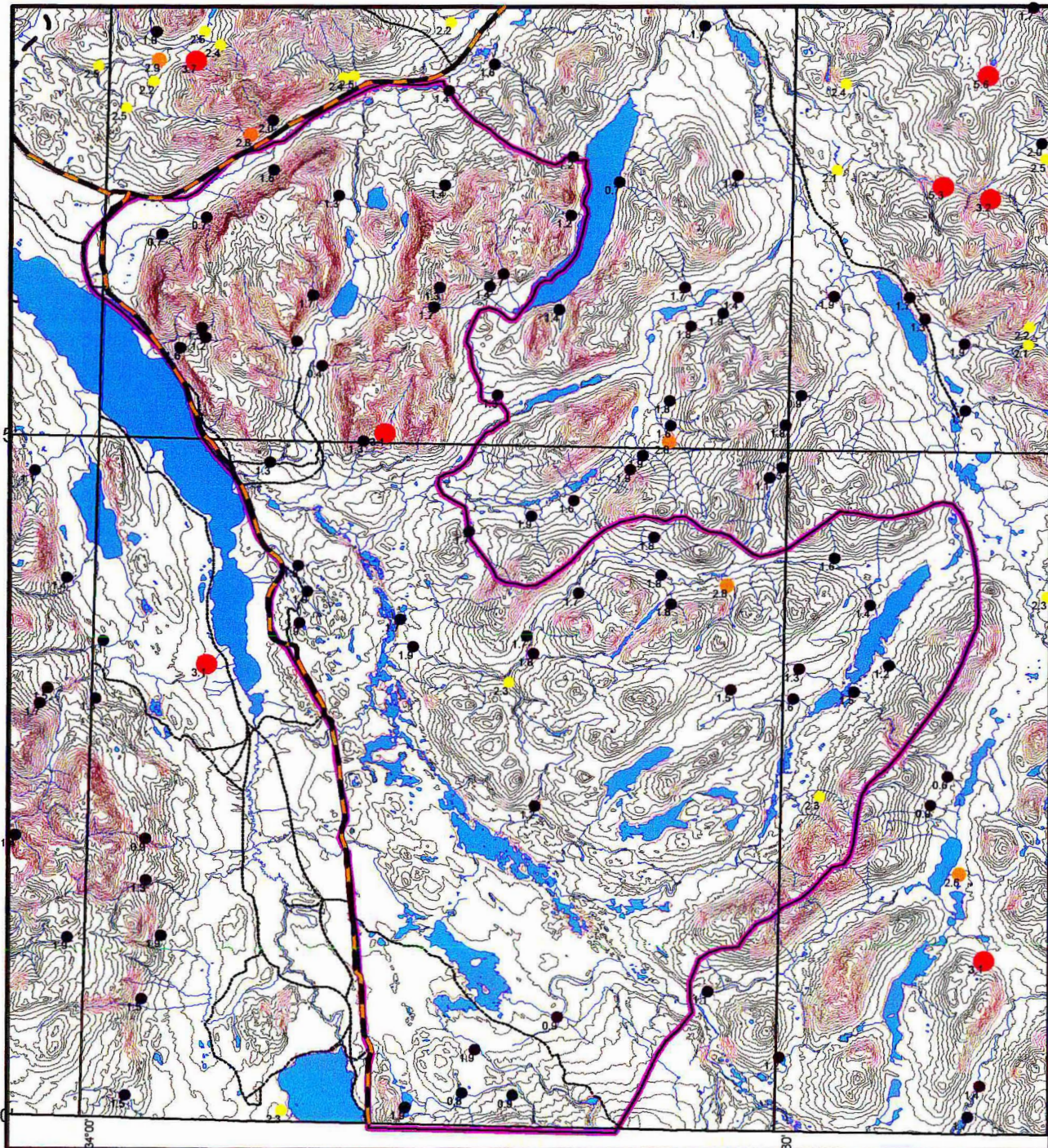
Proposed Snafu / Tarfu
Natural Environment Park
Special Management Area
(September 2002 outline)



Confidential

RGS
Fluorine in water - F_w

Regional Stream Sediment Geochemistry in Proposed Snafu /Tarfu SMA Area



60°15'

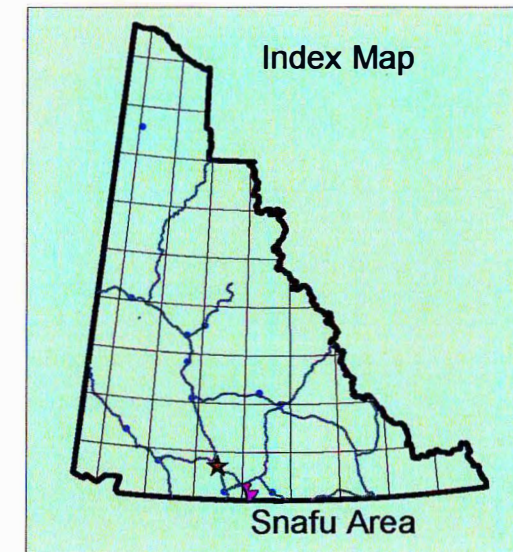
60°00'

Scale 1:250 000



Iron - Fe

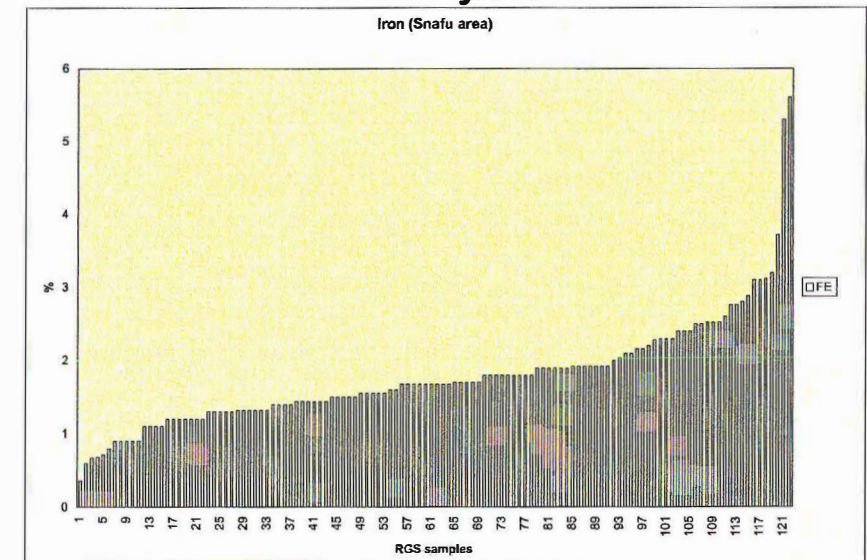
- 0 - 2 %
- 2.1 - 2.5 %
- 2.6 - 3 %
- 3.1 - 5.6 %



Detection Limit: 0.2 %
 Method: INAA - Instrumental Neutron Activation Analysis

# Samples (n)	122
Maximum	5.6
Median	1.68

GSC Open File 1217

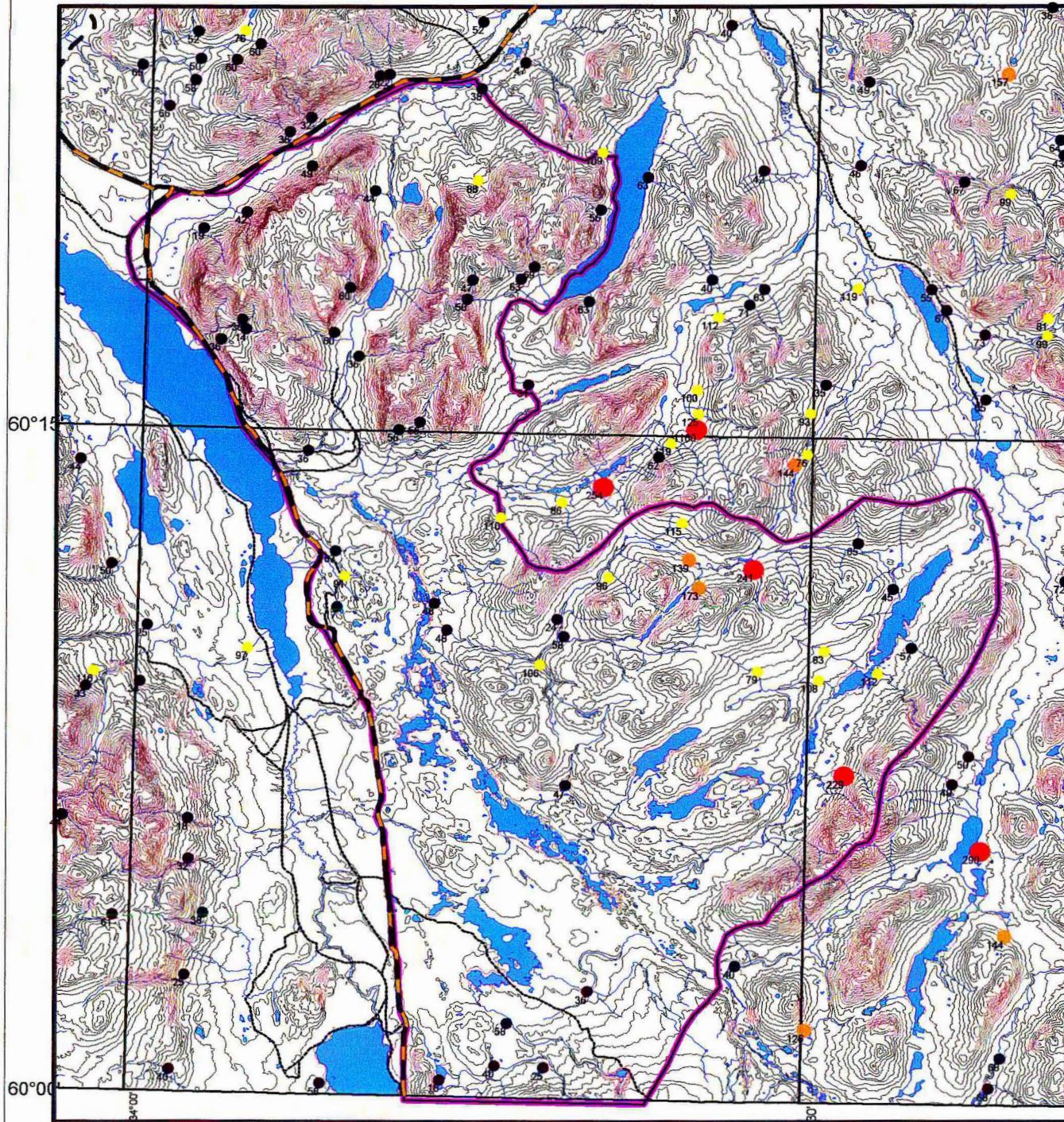


Proposed Snafu / Tarfu
 Natural Environment Park
 Special Management Area
 (September 2002 outline)

Confidential

RGS
 Iron - Fe

Regional Stream Sediment Geochemistry in Proposed Snafu/Tarfu SMA Area

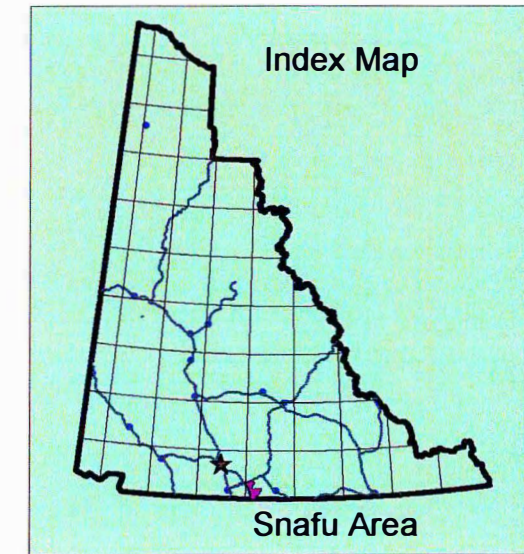


Scale 1:250 000



Mercury - Hg

- 0 - 75 ppb
- 76 - 125 ppb
- 126 - 175 ppb
- 176 - 1160 ppb



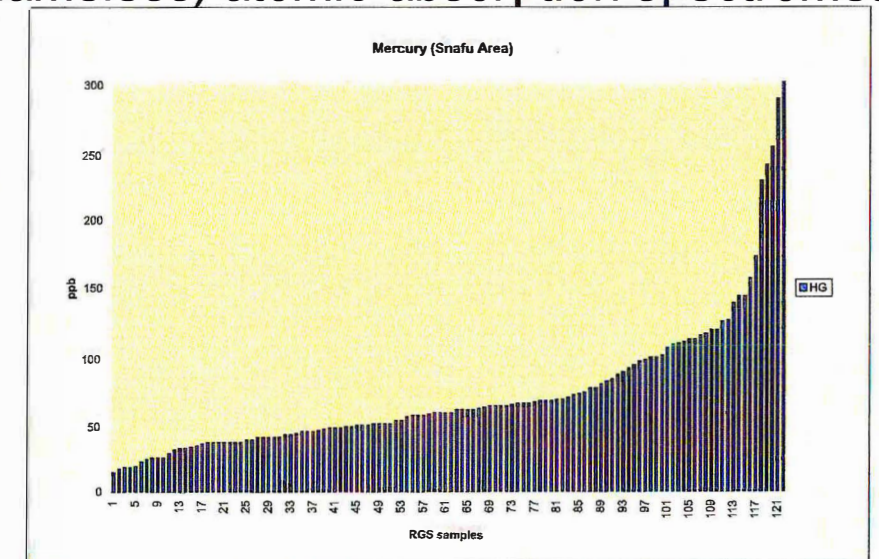
Detection Limit: 5 ppb
 Method: CV-AAS - cold vapour (flameless) atomic absorption spectrometry

# Samples (n)	122
Maximum	1160
Median	58

GSC Open File 1217



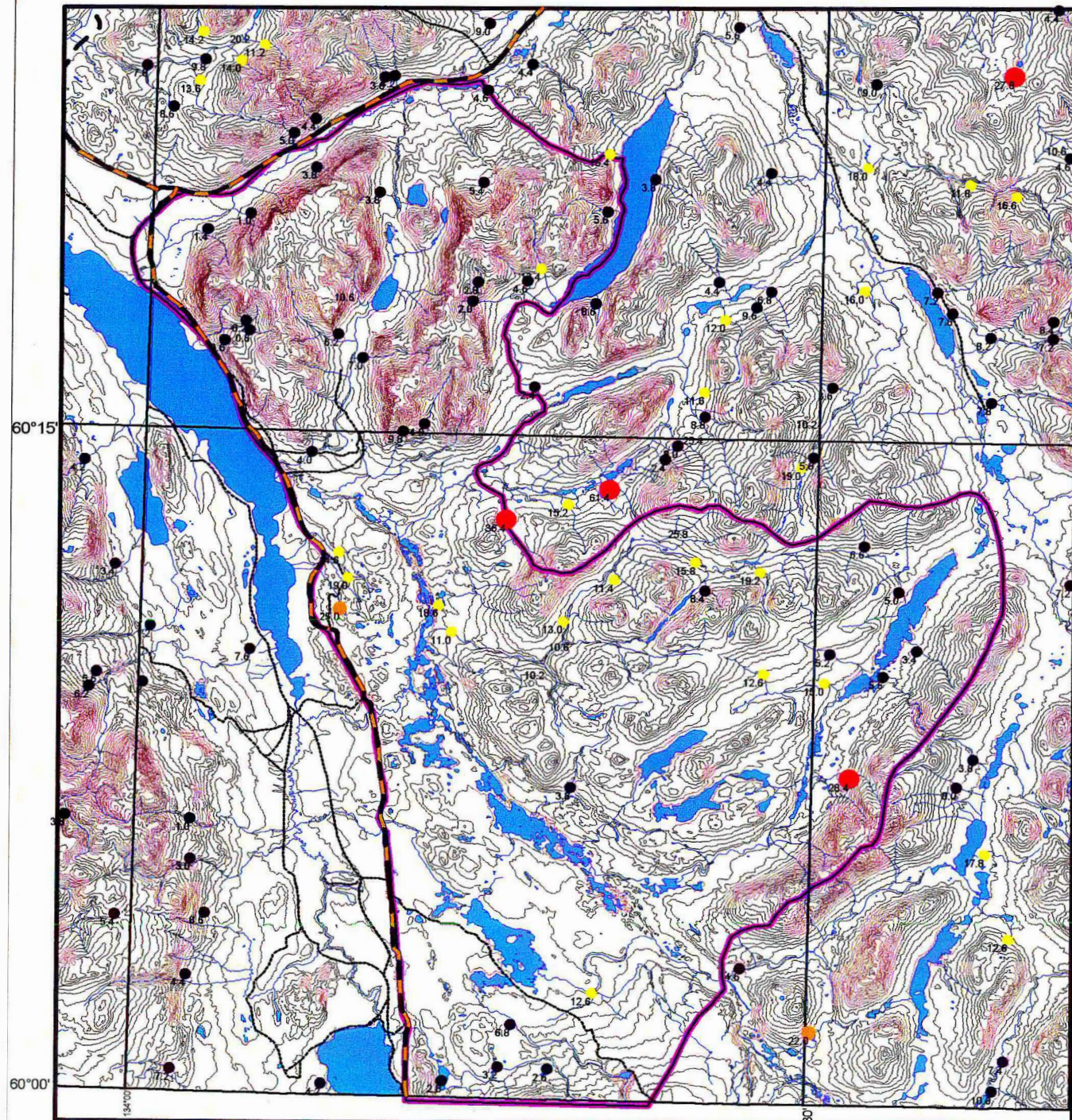
Proposed Snafu / Tarfu
 Natural Environment Park
 Special Management Area
 (September 2002 outline)



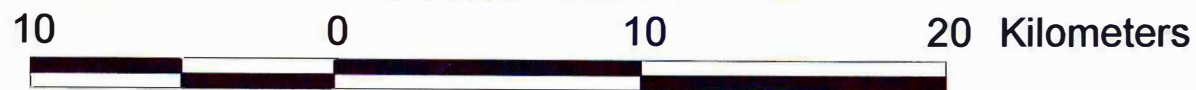
Confidential

RGS
 Mercury - Hg

Regional Stream Sediment Geochemistry in Proposed Snafu/Tarfu SMA Area



Scale 1:250 000



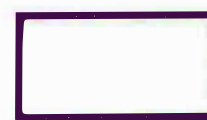
Loss-on-ignition

- 0 - 10 %
- 11 - 20 %
- 21 - 25 %
- 26 - 62 %

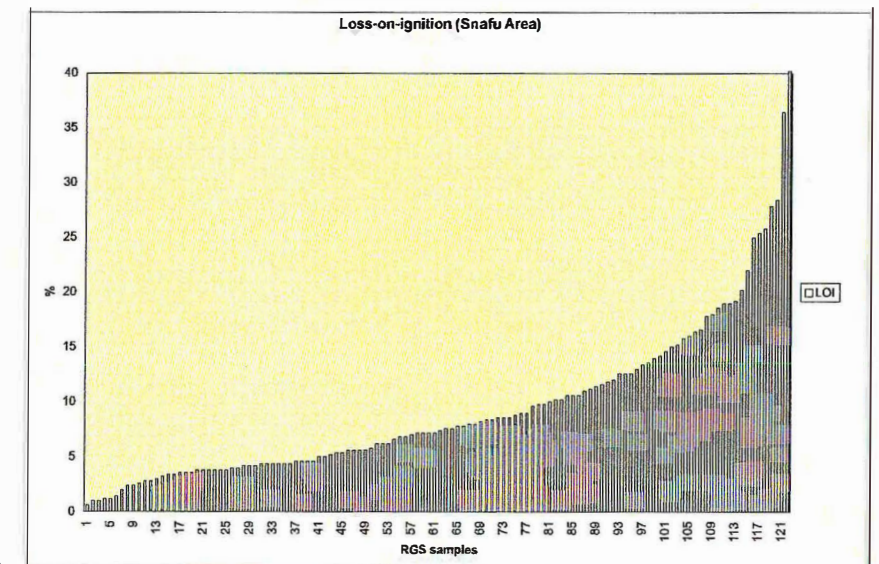
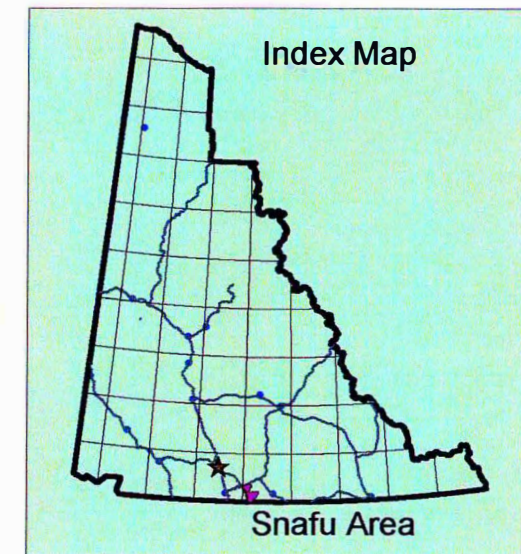
Detection Limit: 1 %
Method: GRAV - gravimetry

Samples (n) 122
Maximum 61.4
Median 7.3

GSC Open File 1217



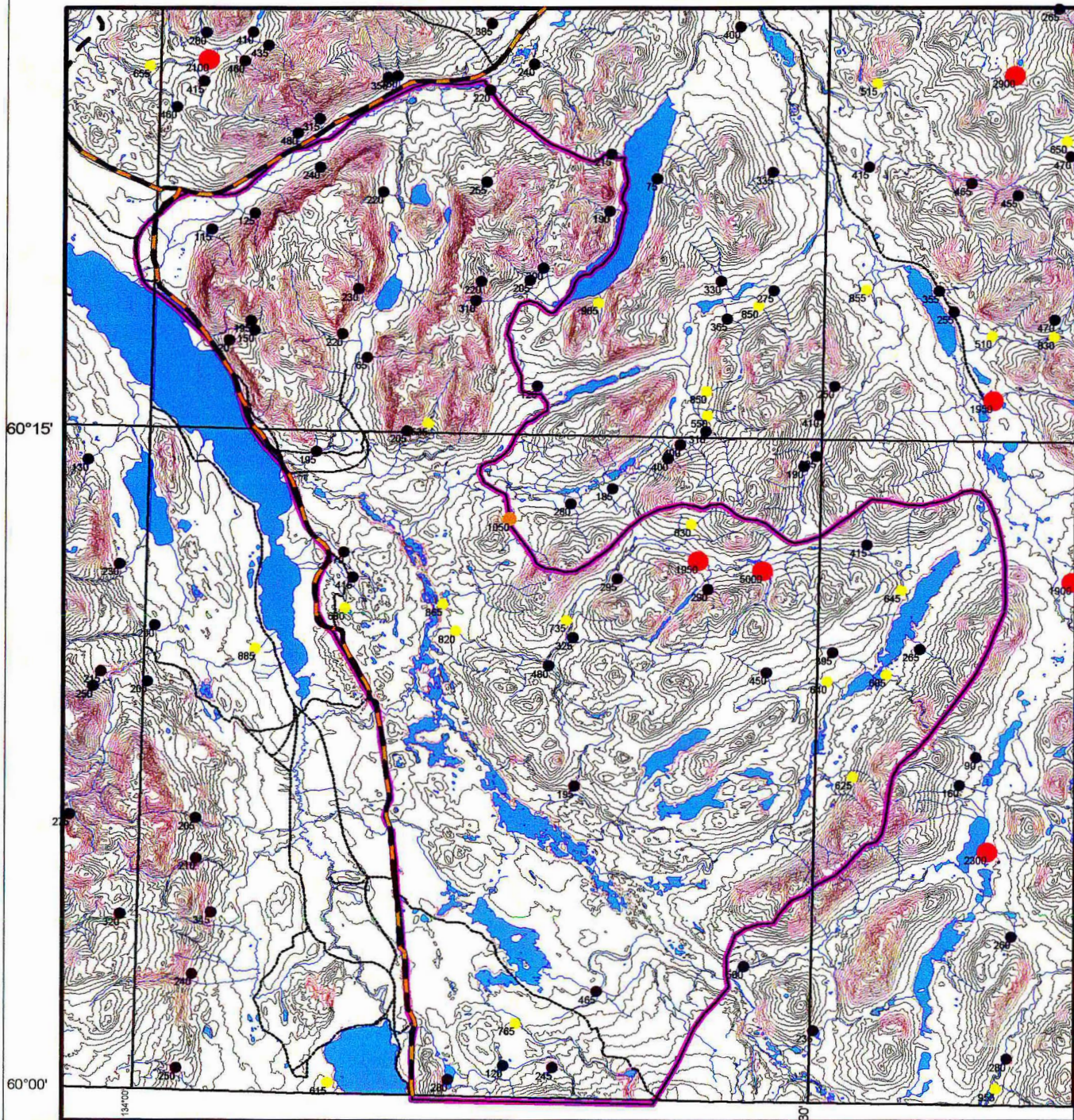
Proposed Snafu / Tarfu
Natural Environment Park
Special Management Area
(September 2002 outline)



Confidential

RGS
Loss-on-ignition

Regional Stream Sediment Geochemistry in Proposed Snafu/Tarfu SMA Area

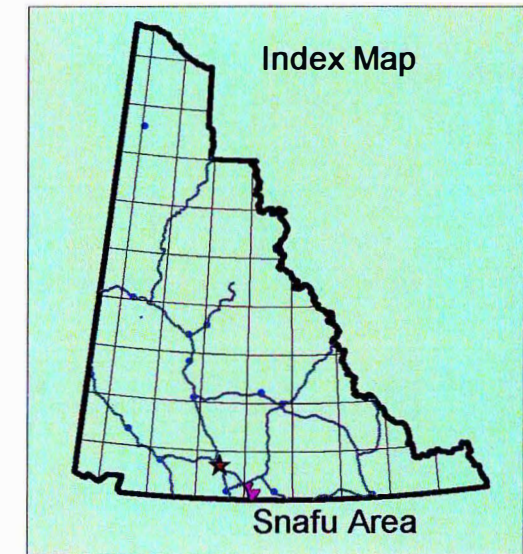


Scale 1:250 000



Manganese - Mn

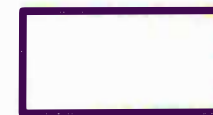
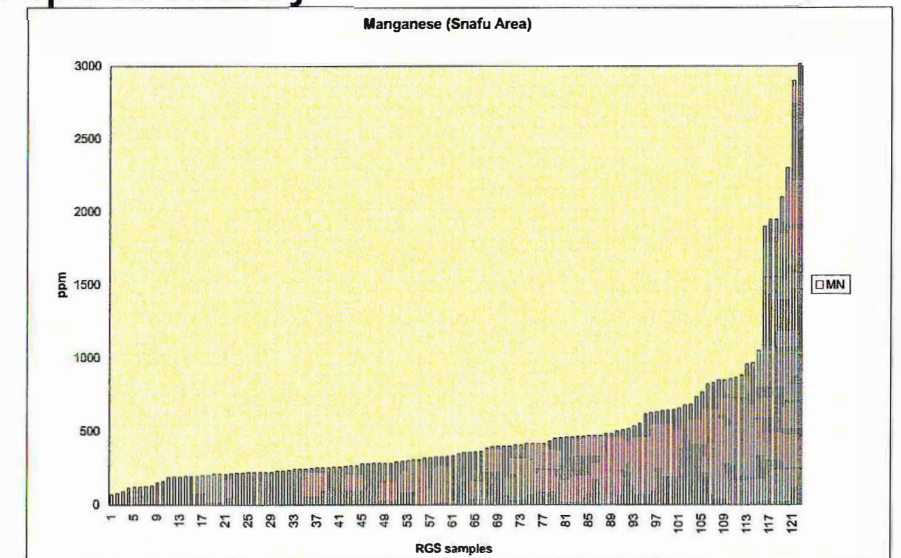
- 0 - 500 ppm
- 501 - 1000 ppm
- 1001 - 1500 ppm
- 1501 - 5000 ppm



Detection Limit: 5 ppm
Method: AAS- atomic absorption spectrometry

# Samples (n)	122
Maximum	5000
Median	340

GSC Open File 1217

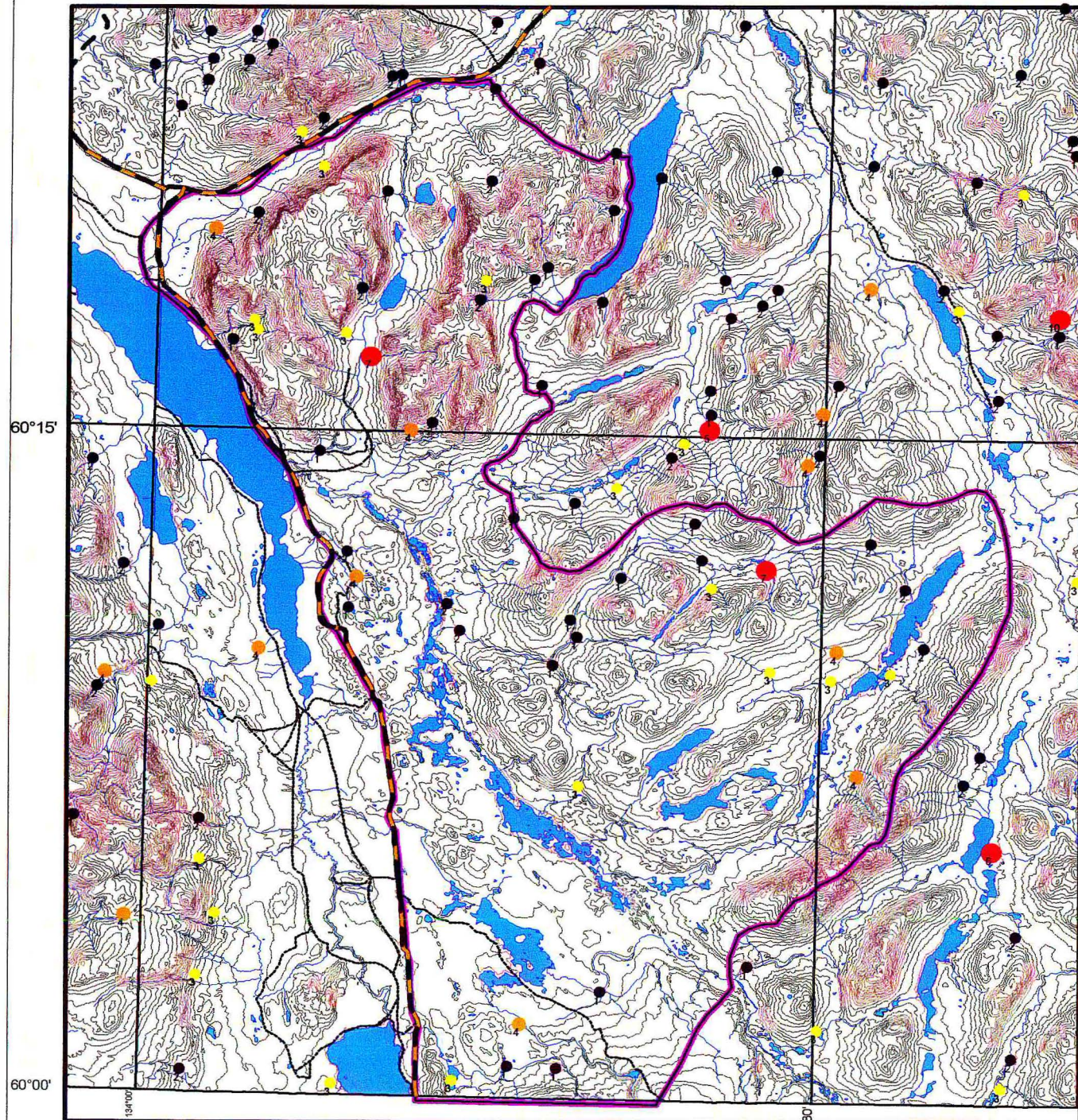


Proposed Snafu / Tarfu
Natural Environment Park
Special Management Area
(September 2002 outline)

Confidential

RGS
Manganese - Mn

Regional Stream Sediment Geochemistry in Proposed Snafu /Tarfus SMA Area



60°15'

60°00'

Scale 1:250 000

10 0 10 20 Kilometers

Molybdenum - Mo

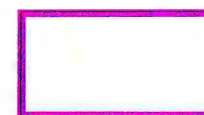
- 0 - 2 ppm
- 2.1 - 3 ppm
- 3.1 - 4 ppm
- 4.1 - 10 ppm

Detection Limit: 2 ppm

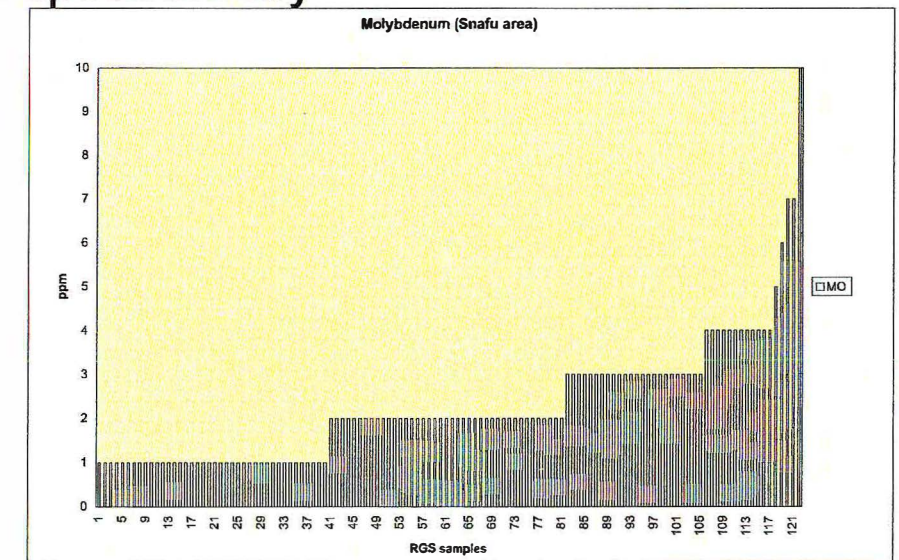
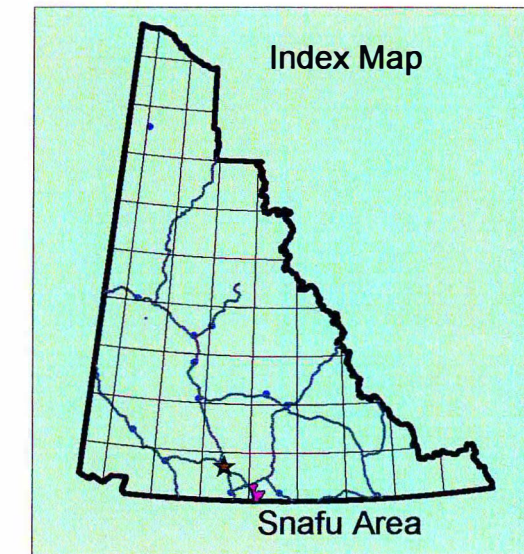
Method: AAS- atomic absorption spectrometry

# Samples (n)	122
Maximum	10
Median	2

GSC Open File 1217



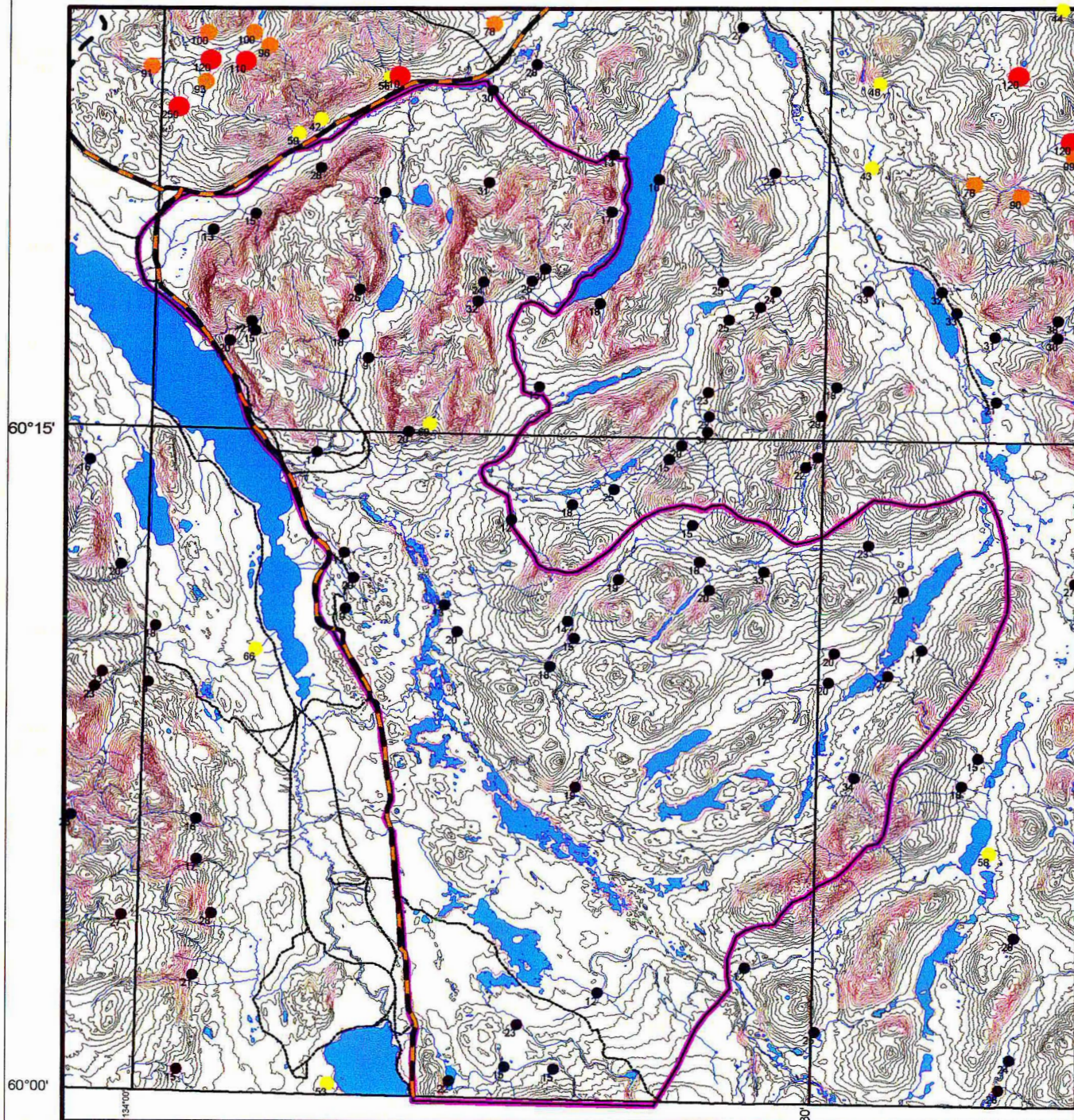
Proposed Snafu / Tarfu
Natural Environment Park
Special Management Area
(September 2002 outline)



Confidential

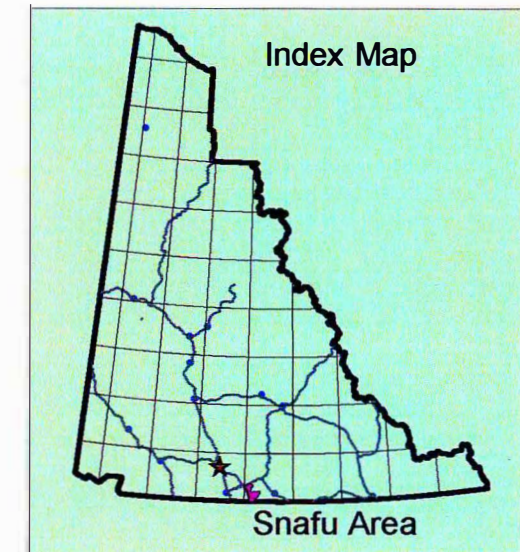
RGS
Molybdenum - Mo

Regional Stream Sediment Geochemistry in Proposed Snafu/Tarfu SMA Area



Nickel - Ni

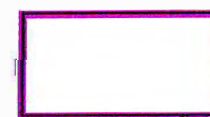
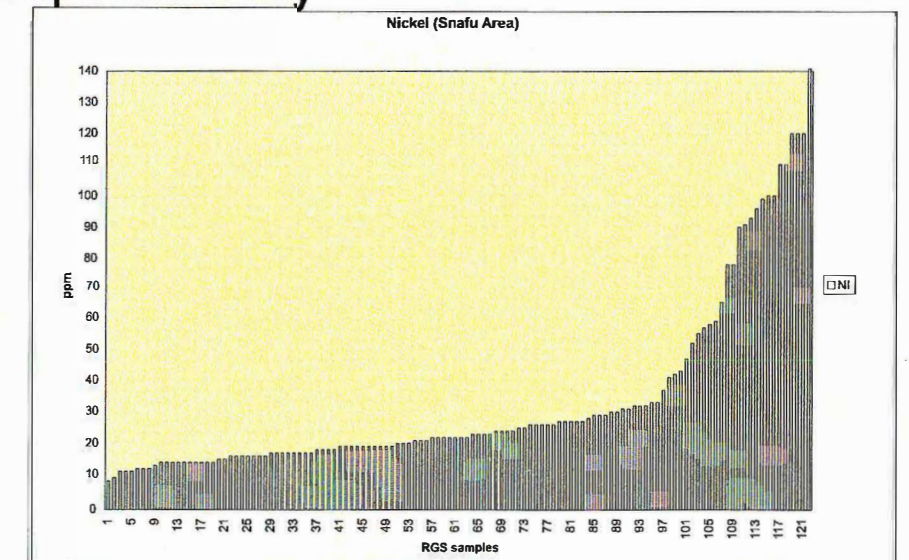
- 0 - 40 ppm
- 40.1 - 70 ppm
- 70.1 - 100 ppm
- 100.1 - 250 ppm



Detection Limit: 2 ppm
 Method: AAS- atomic absorption spectrometry

# Samples (n)	122
Maximum	250
Median	23

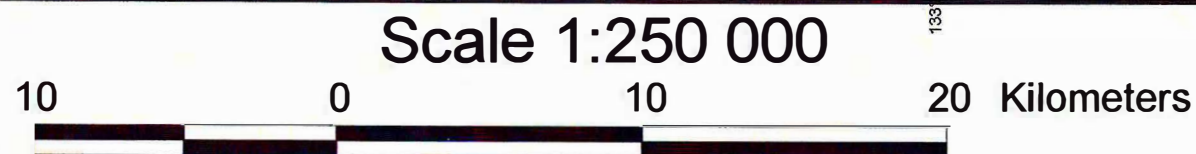
GSC Open File 1217



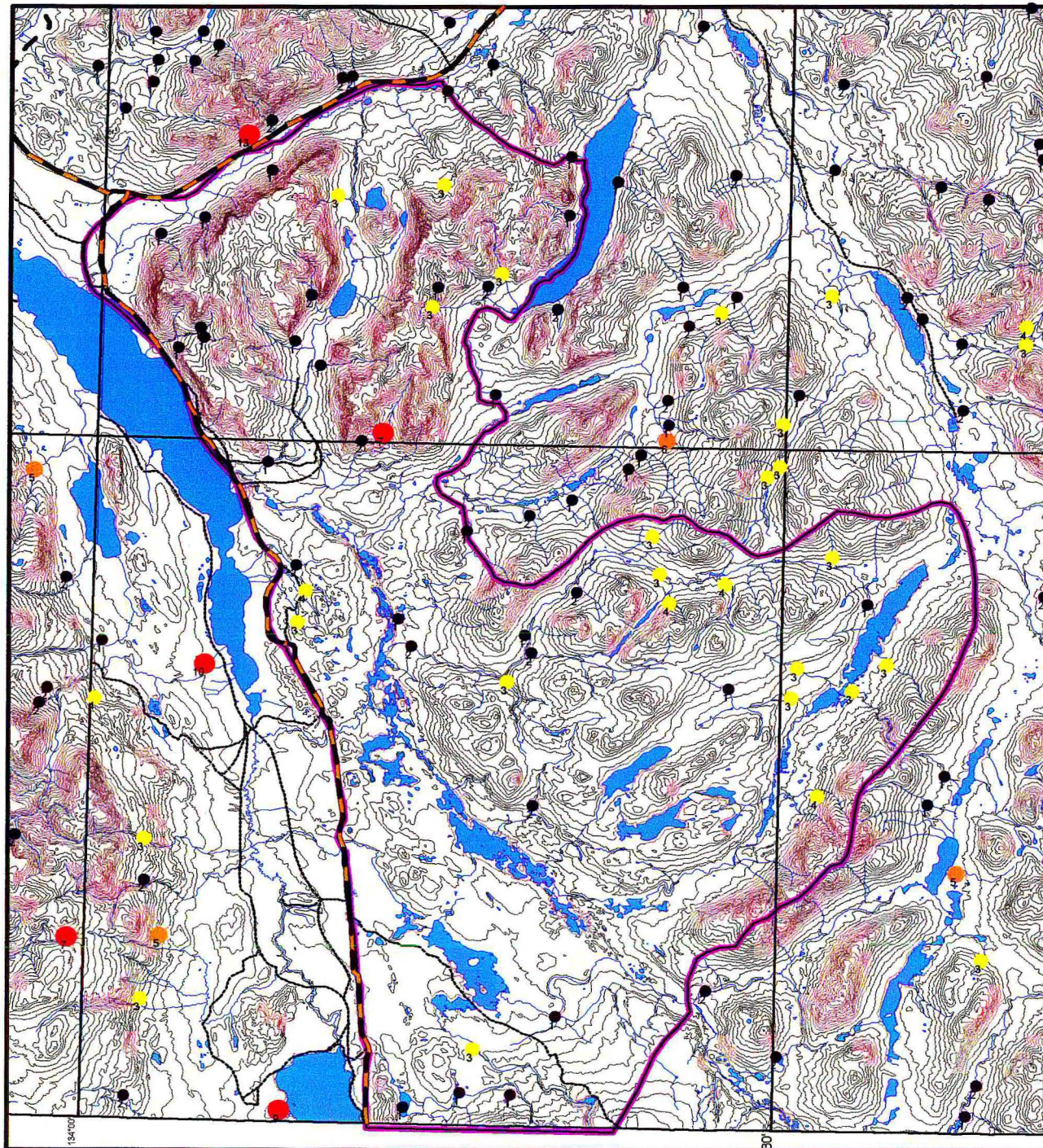
Proposed Snafu / Tarfu
 Natural Environment Park
 Special Management Area
 (September 2002 outline)

Confidential

**RGS
 Nickel - Ni**

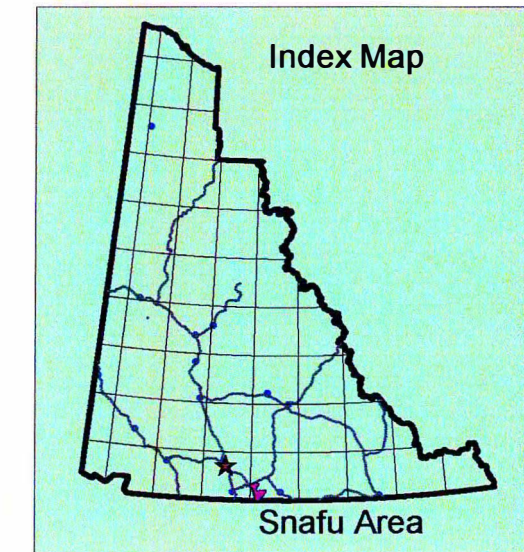


Regional Stream Sediment Geochemistry in Proposed Snafu/Tarfu SMA Area



Lead - Pb

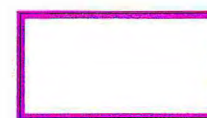
- 0 - 2 ppm
- 2.1 - 4 ppm
- 4.1 - 6 ppm
- 6.1 - 13 ppm



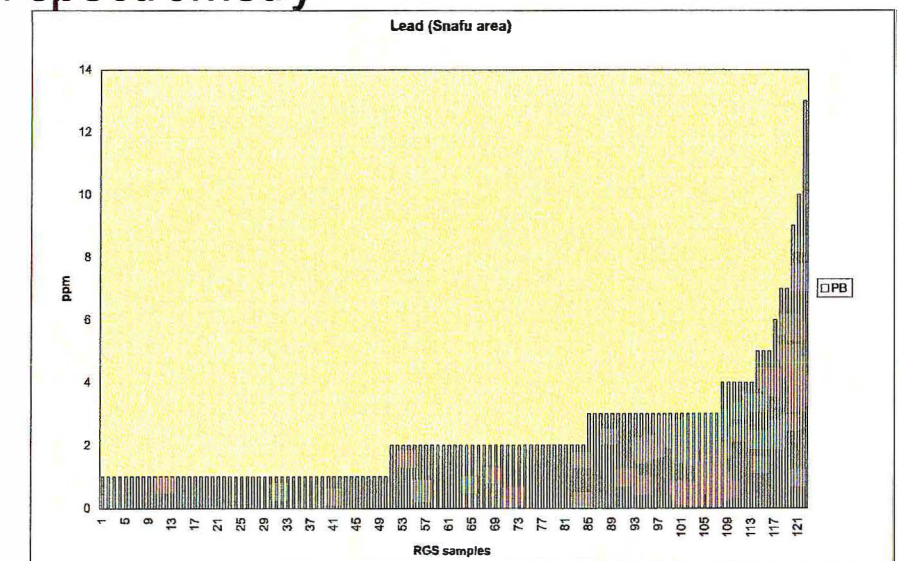
Detection Limit: 2 ppm
 Method: AAS- atomic absorption spectrometry

# Samples (n)	122
Maximum	13
Median	2

GSC Open File 1217



Proposed Snafu / Tarfu
 Natural Environment Park
 Special Management Area
 (September 2002 outline)



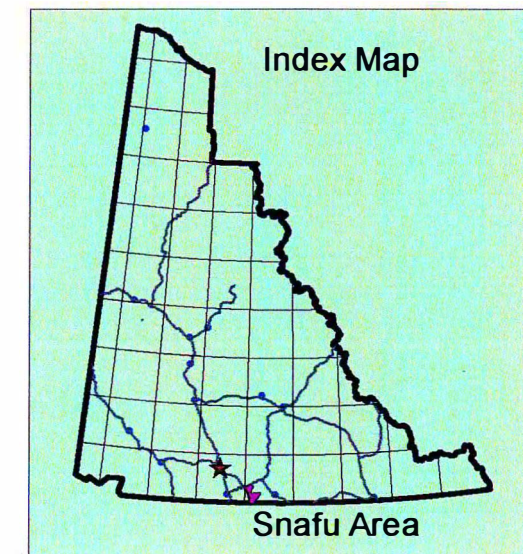
Confidential

RGS
 Lead - Pb

Regional Stream Sediment Geochemistry in Proposed Snafu /Tarfus SMA Area

Antimony - Sb

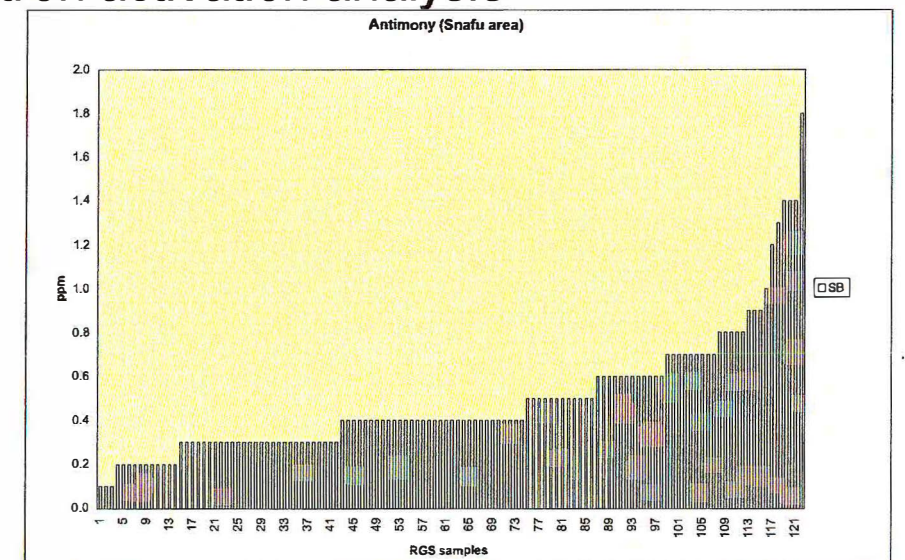
- 0 - 0.4 ppm
- 0.41 - 0.7 ppm
- 0.71 - 0.9 ppm
- 0.91 - 1.8 ppm



Detection Limit: 0.1 ppm
Method: INAA- instrumental neutron activation analysis

Samples (n) 122
Maximum 1.8
Median 0.4

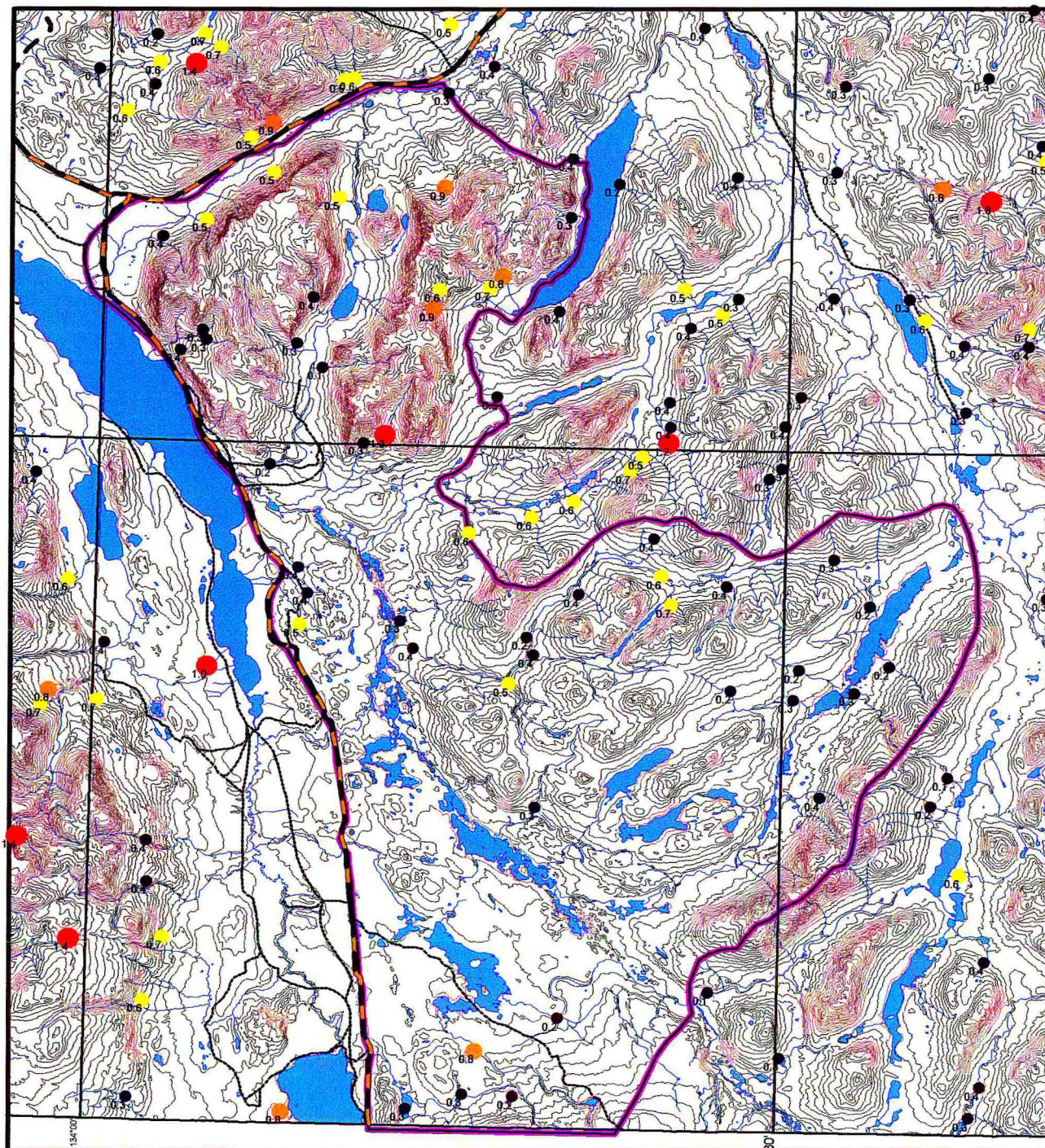
GSC Open File 1217



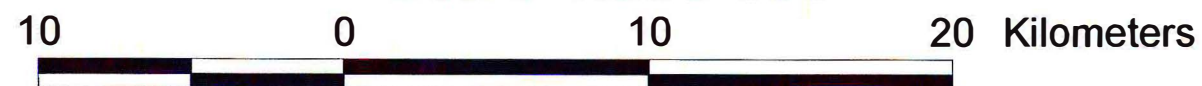
Proposed Snafu / Tarfu
Natural Environment Park
Special Management Area
(September 2002 outline)

Confidential

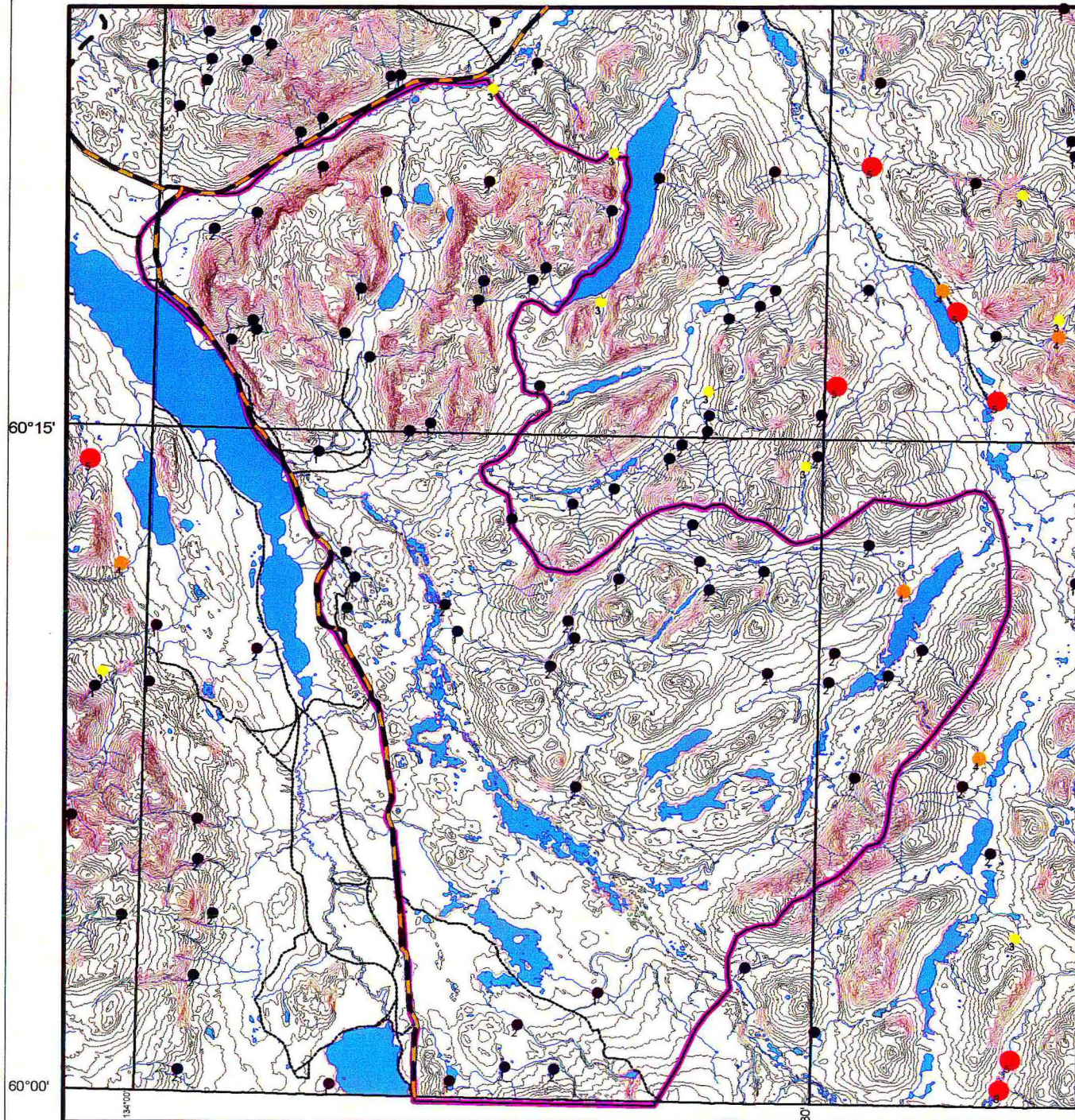
RGS
Antimony - Sb



Scale 1:250 000



Regional Stream Sediment Geochemistry in Proposed Snafu/Tarfu SMA Area



60°15'

60°00'

133°50'

Scale 1:250 000



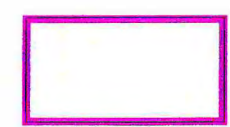
Tin - Sn

- 0 - 2 ppm
- 2.1 - 3 ppm
- 3.1 - 4 ppm
- 4.1 - 8 ppm

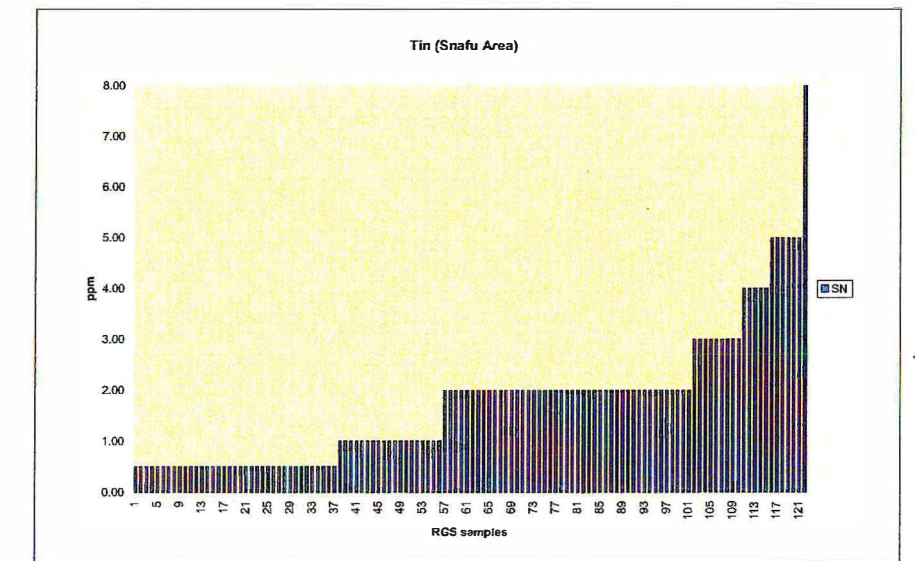
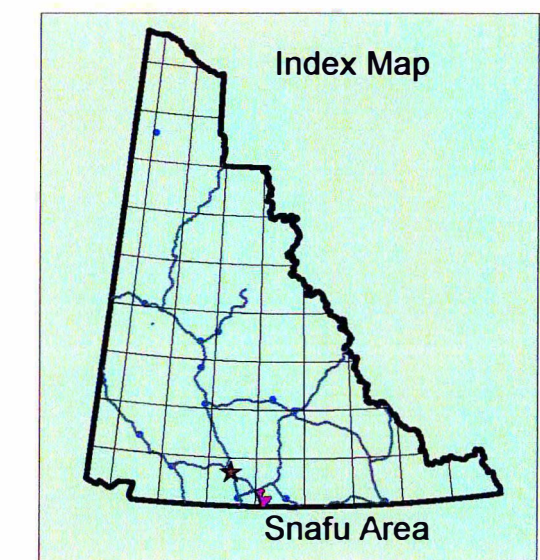
Detection Limit: 1 ppm
Method: FUS - NH4I fusion

# Samples (n)	122
Maximum	8
Median	2

GSC Open File 1217



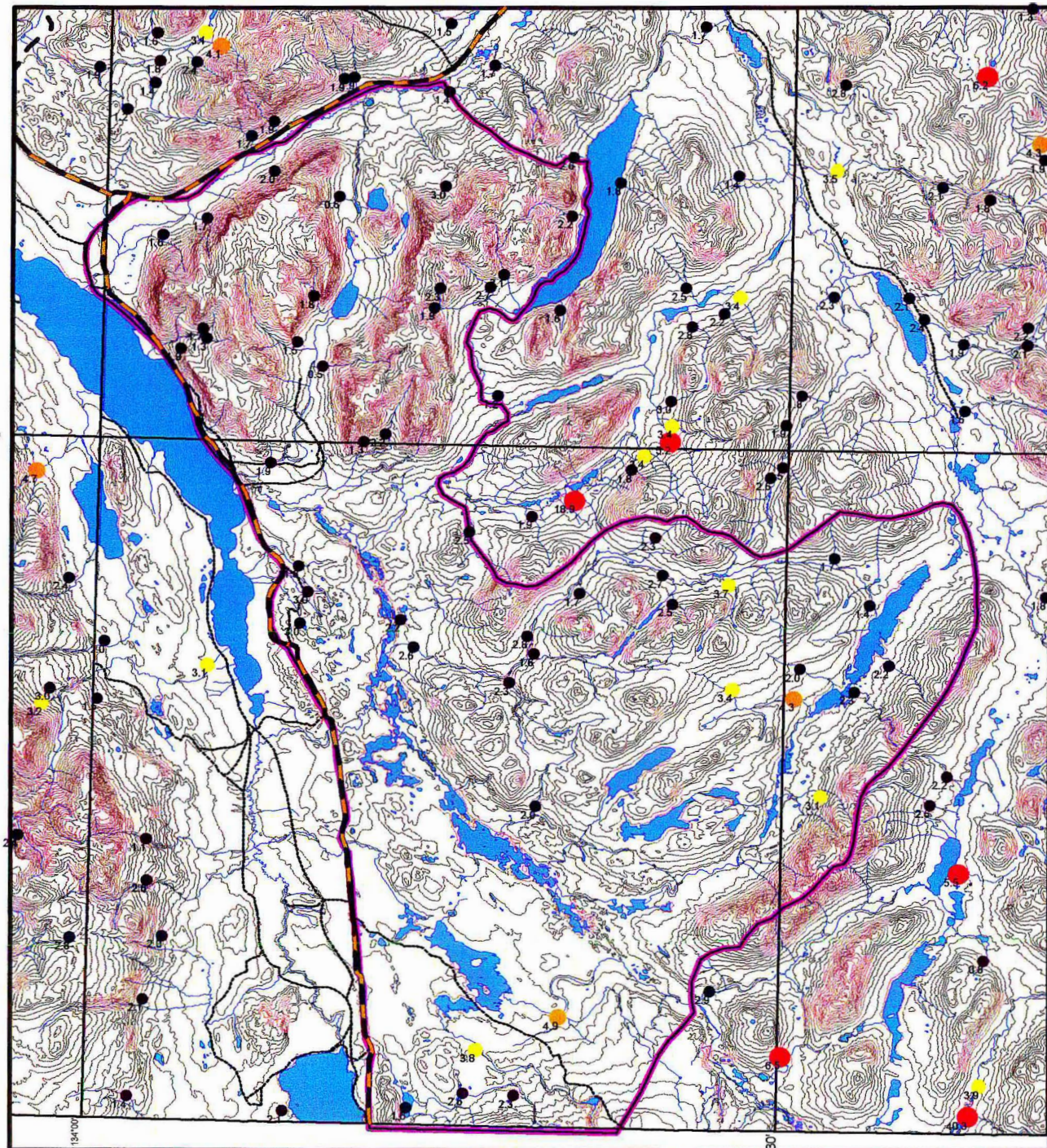
Proposed Snafu / Tarfu
Natural Environment Park
Special Management Area
(September 2002 outline)



Confidential

RGS
Tin - Sn

Regional Stream Sediment Geochemistry in Proposed Snafu/Tarfu SMA Area



60°15'

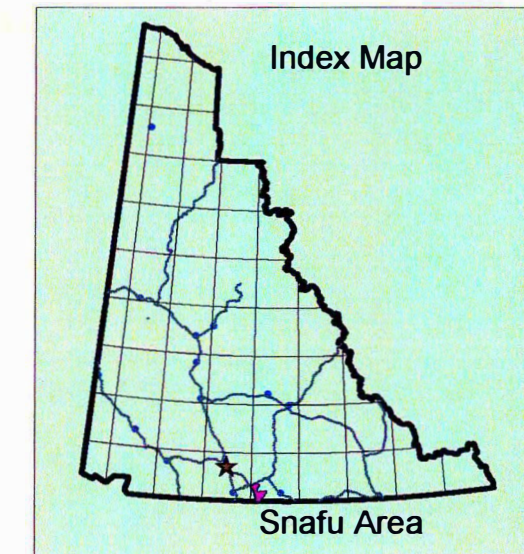
60°00'

Scale 1:250 000



Uranium - U

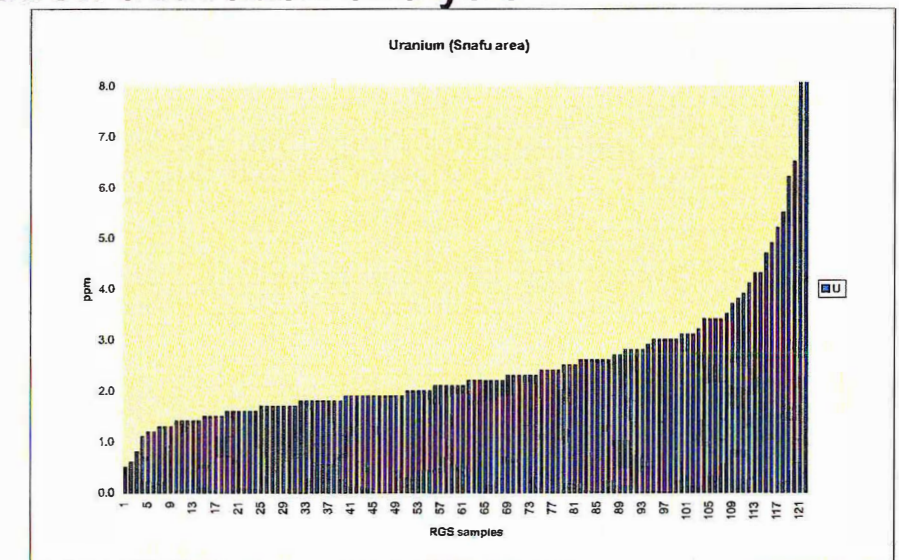
- 0 - 3 ppm
- 3.1 - 4 ppm
- 4.1 - 5 ppm
- 5.1 - 40.3 ppm



Detection Limit: 0.2 ppm
 Method: INAA - instrumental neutron activation analysis

# Samples (n)	122
Maximum	40.3
Median	2.2

GSC Open File 1217

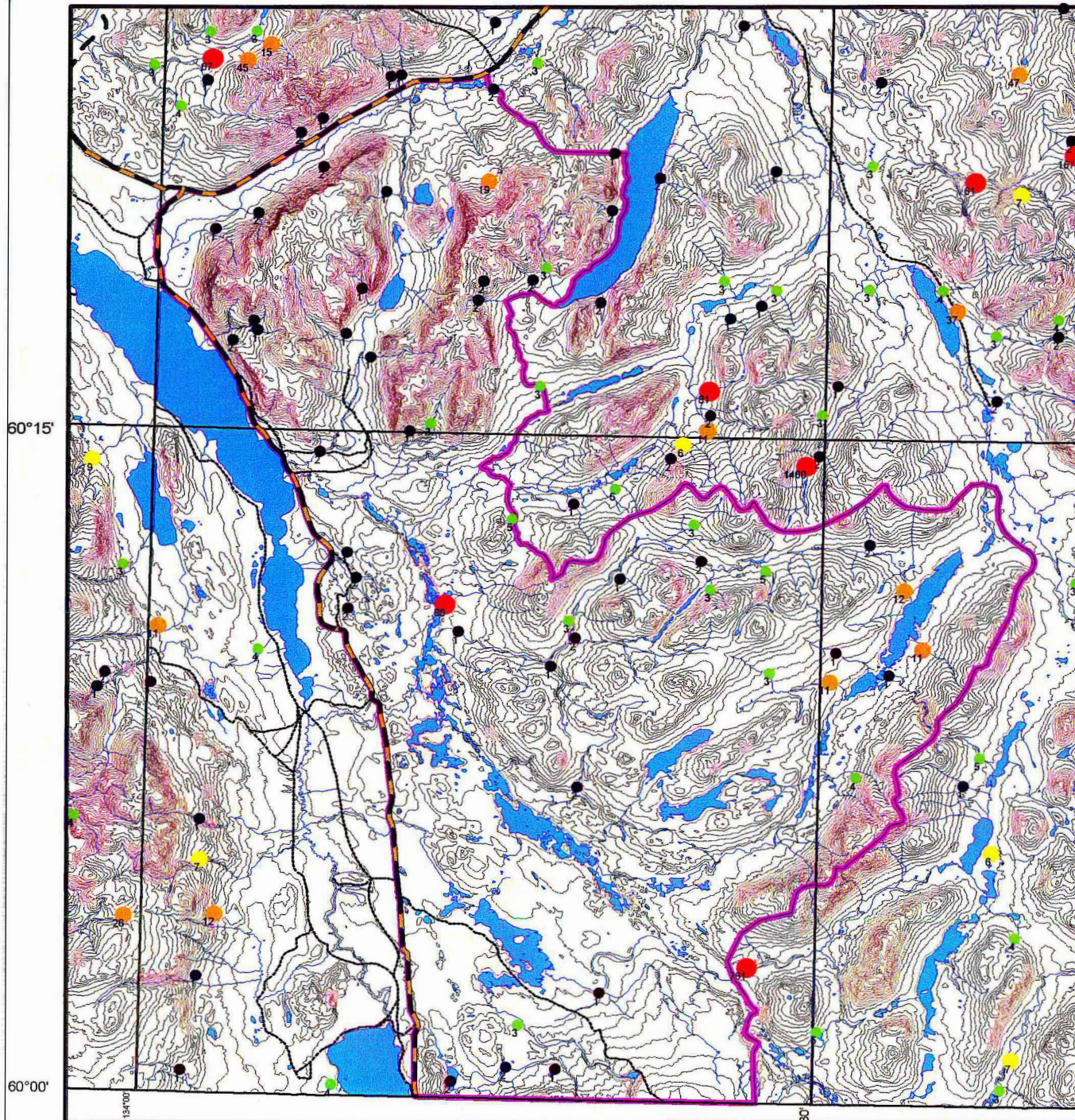


Proposed Snafu / Tarfu
 Natural Environment Park
 Special Management Area
 (September 2002 outline)

Confidential

RGS
 Uranium - U

Regional Stream Sediment Geochemistry in Proposed Snafu/Tarfu SMA Area



60°15'

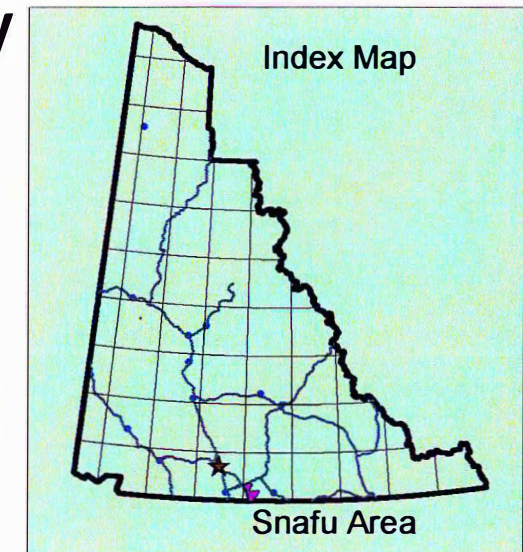
60°00'

Scale 1:250 000

10 0 10 20 Kilometers

Uranium in water - U_w

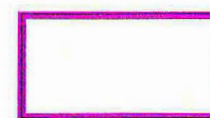
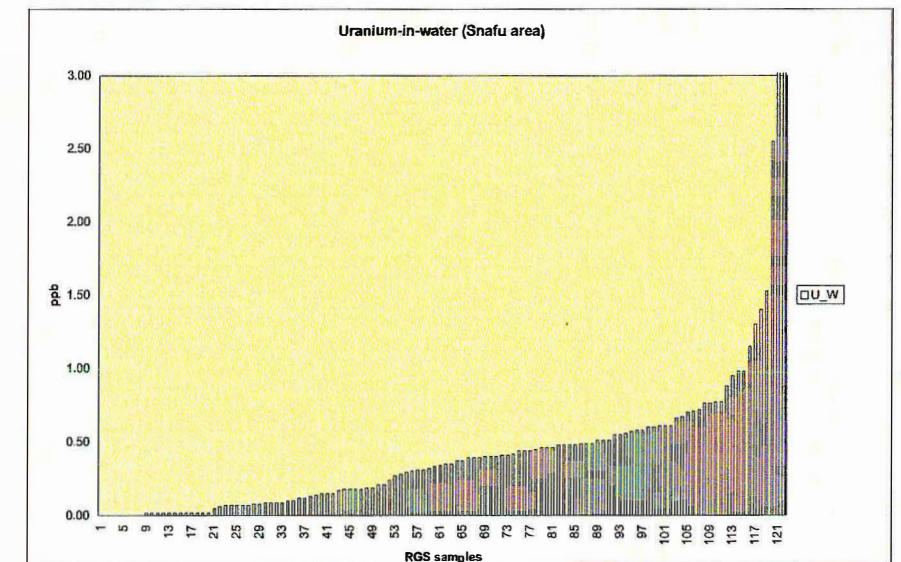
- 0 - 0.5 ppb
- 0.51 - 1.0 ppb
- 1.01 - 1.5 ppb
- 1.51 - 4.25 ppb



Detection Limit: 0.5 ppb
Method: LIF - laser-induced fluorescence

# Samples (n)	122
Maximum	4.25
Median	0.34

GSC Open File 1217

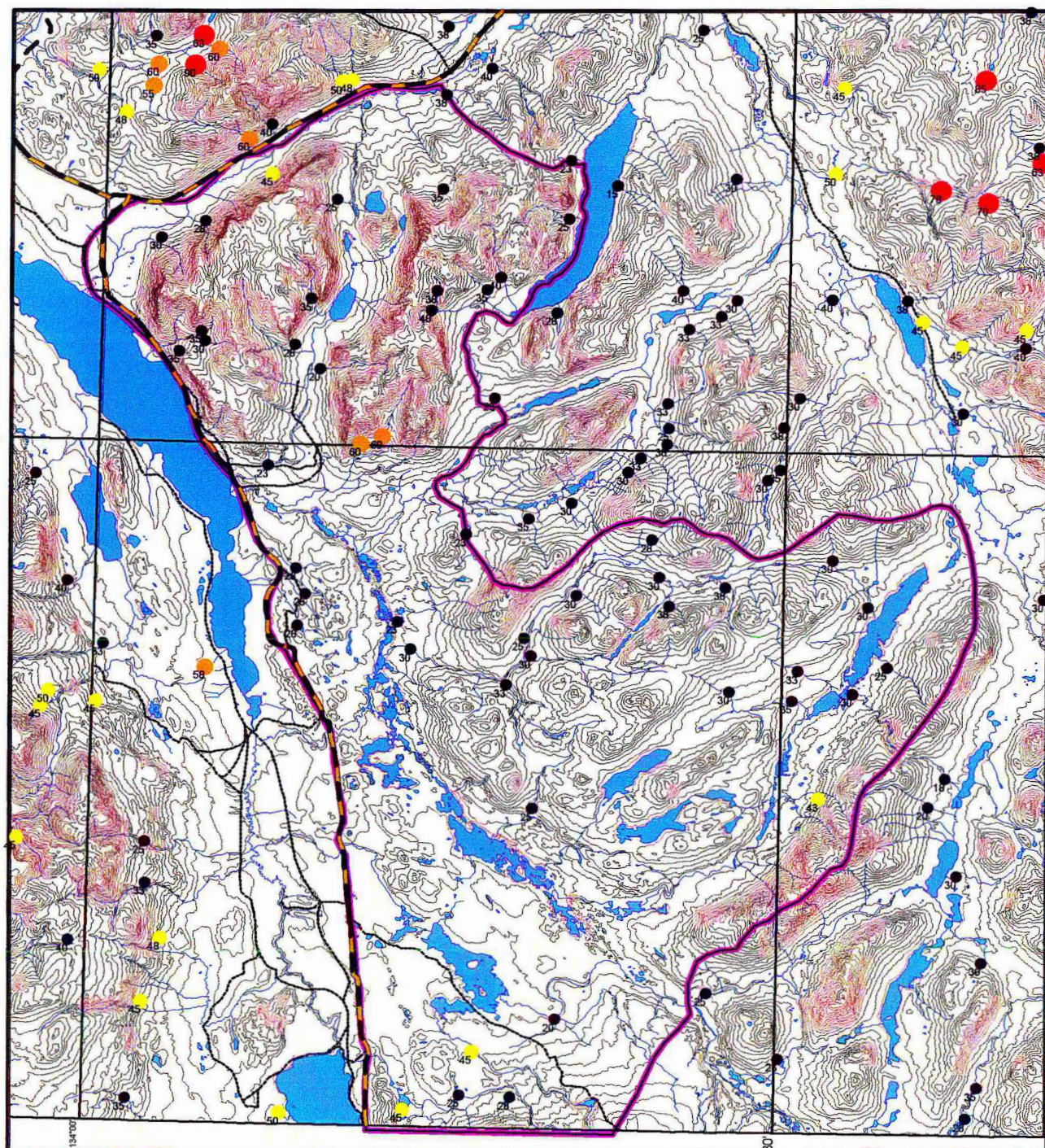


Proposed Snafu / Tarfu
Natural Environment Park
Special Management Area
(September 2002 outline)

Confidential

RGS
Uranium in water - U_w

Regional Stream Sediment Geochemistry in Proposed Snafu /Tarfus SMA Area



60°15'

60°00'

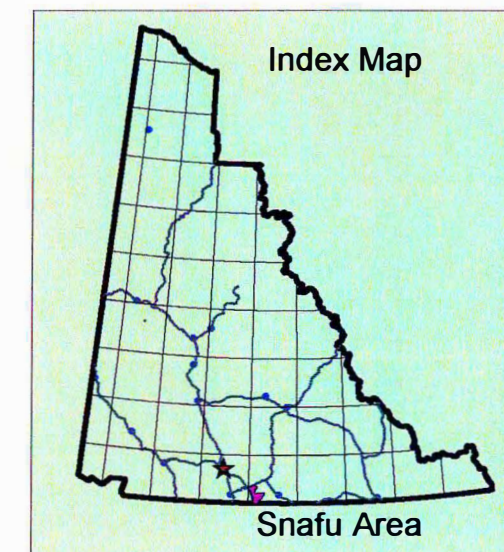
Scale 1:250 000

133 30



Vanadium - V

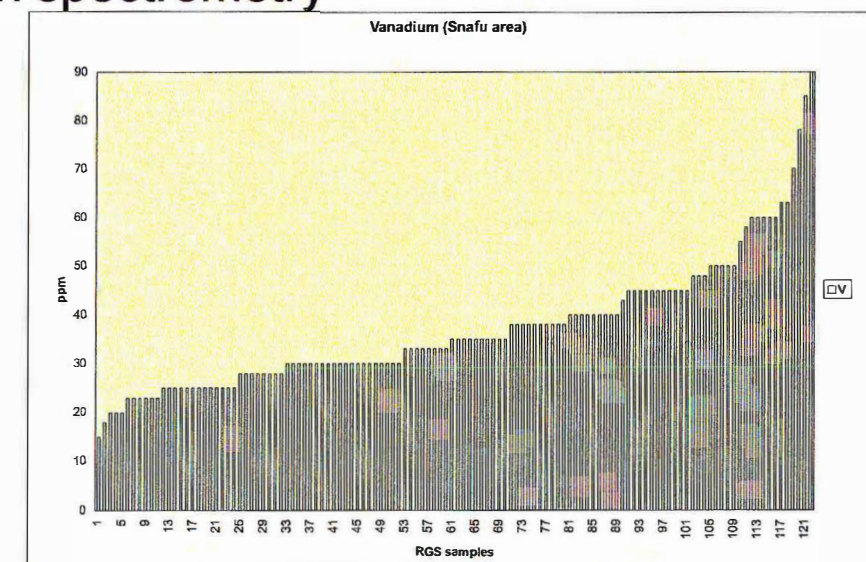
- 0 - 40 ppm
- 40.1 - 50 ppm
- 50.1 - 60 ppm
- 60.1 - 90 ppm



Detection Limit: 5 ppm
Method: AAS - atomic absorption spectrometry

# Samples (n)	122
Maximum	90
Median	35

GSC Open File 1217

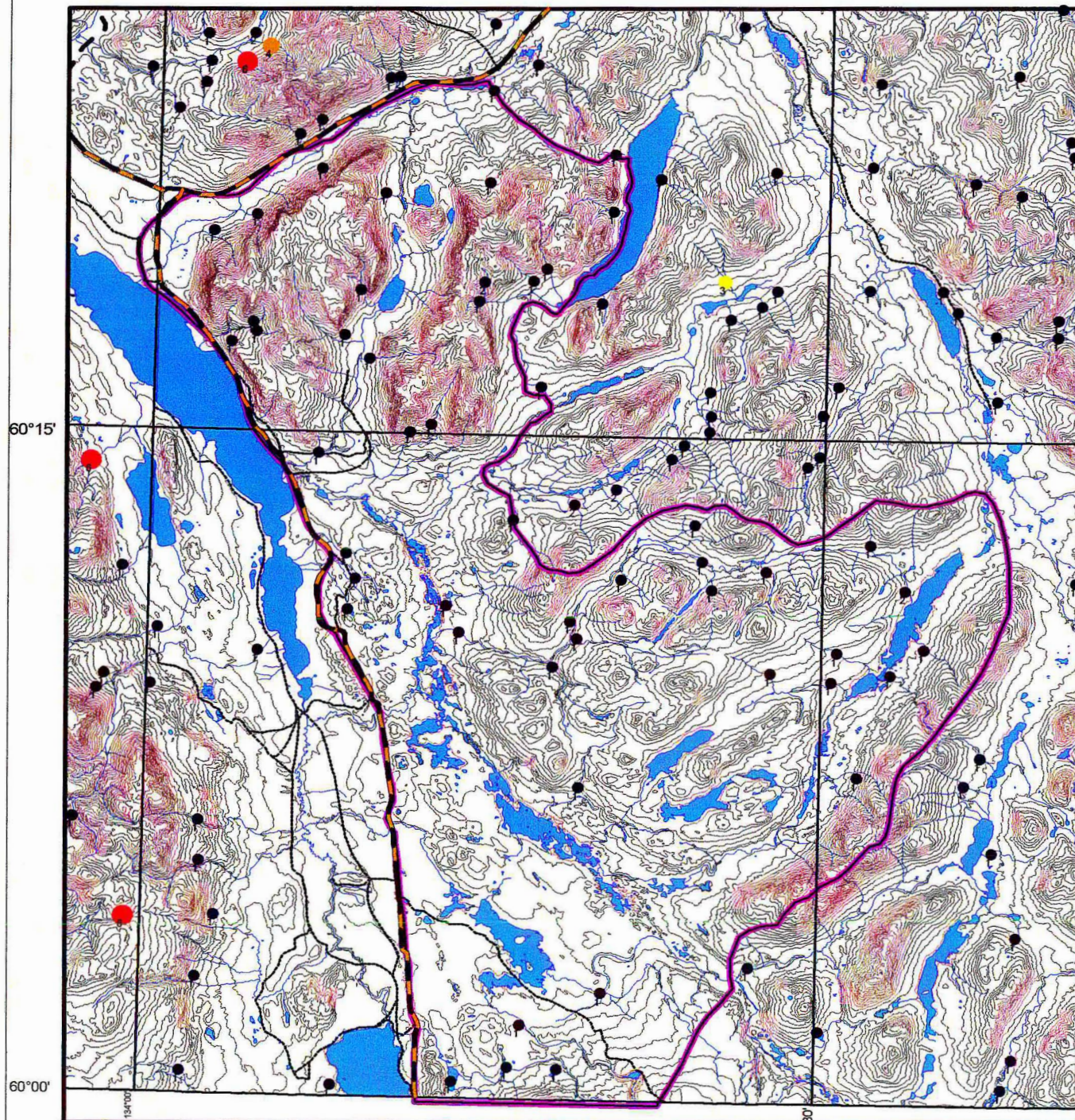


Proposed Snafu / Tarfu
Natural Environment Park
Special Management Area
(September 2002 outline)

Confidential

RGS
Vanadium - V

Regional Stream Sediment Geochemistry in Proposed Snafu/Tarfu SMA Area

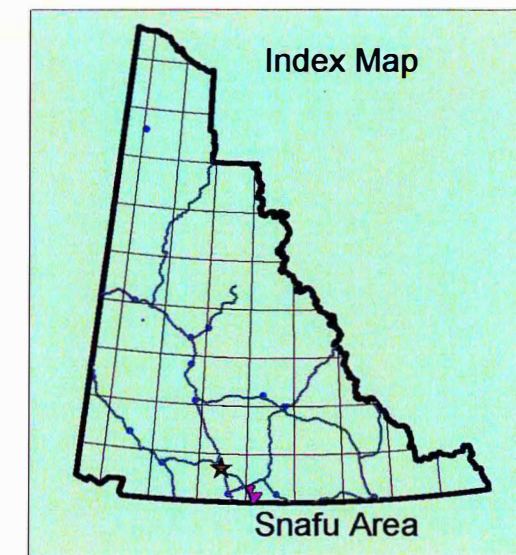


Scale 1:250 000



Tungsten - W

- 0 - 2 ppm
- 2.1 - 3 ppm
- 3.1 - 4 ppm
- 4.1 - 6 ppm

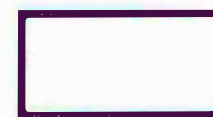
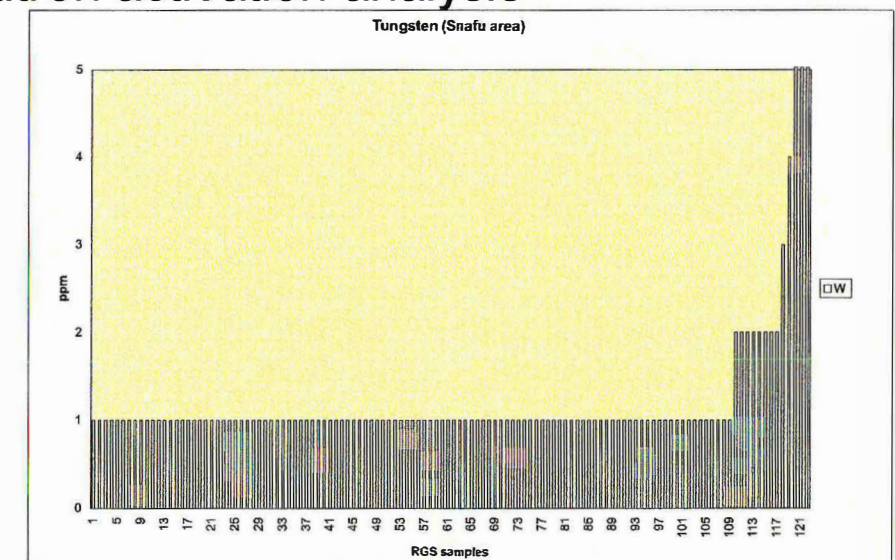


Detection Limit: 1 ppm

Method: INAA - instrumental neutron activation analysis

# Samples (n)	122
Maximum	6
Median	1

GSC Open File 1217

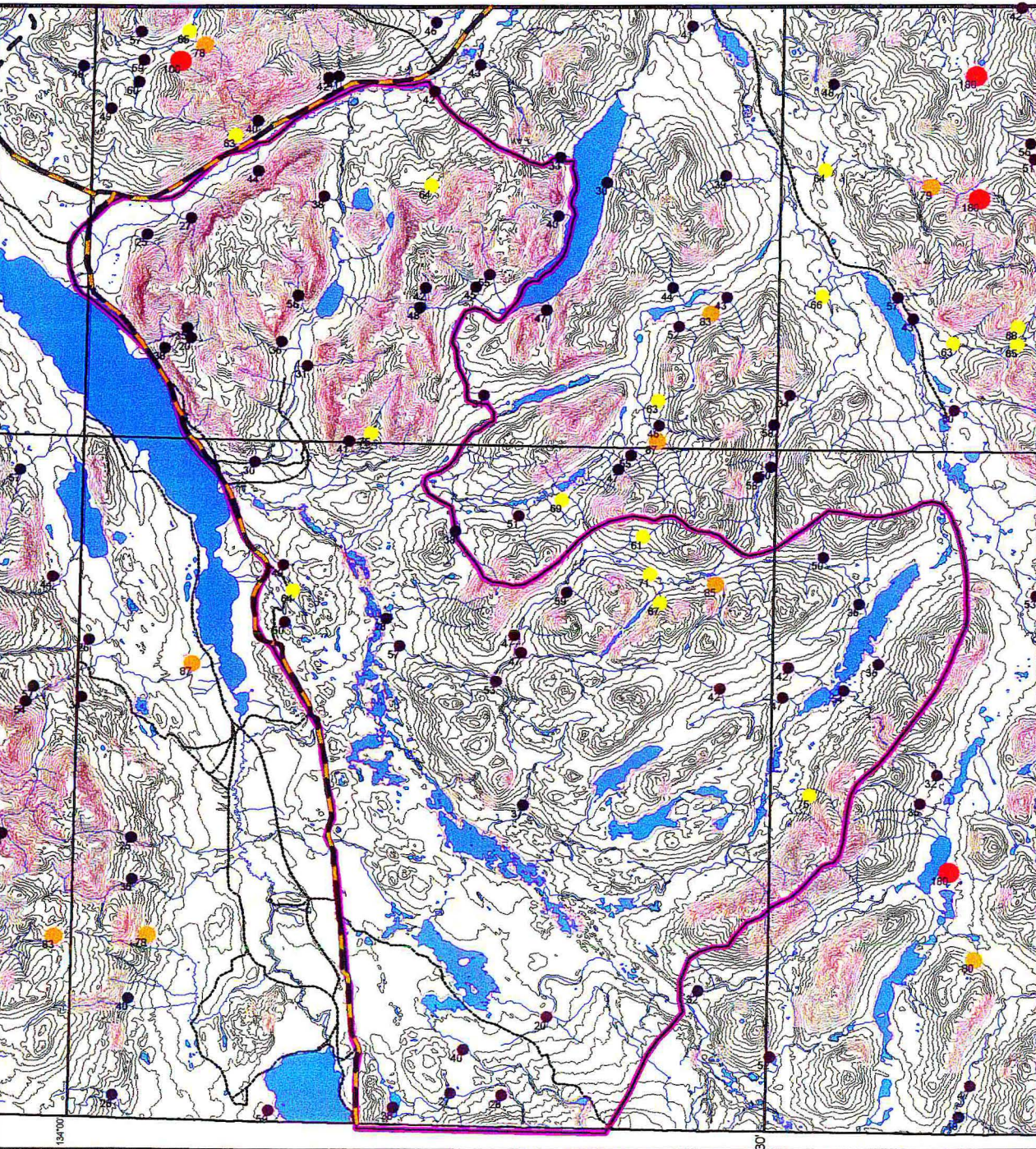


Proposed Snafu / Tarfu
Natural Environment Park
Special Management Area
(September 2002 outline)

Confidential

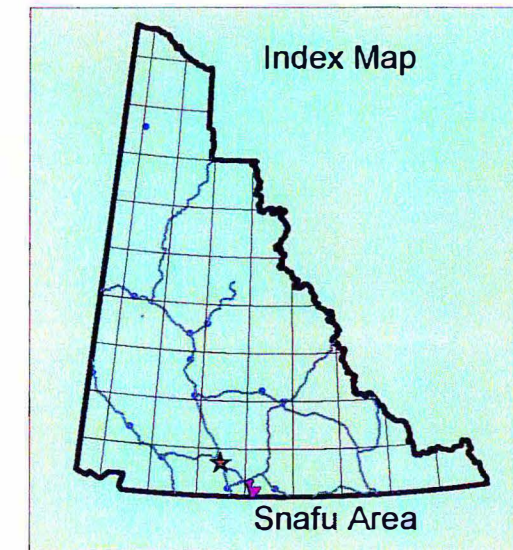
RGS
Tungsten - W

Regional Stream Sediment Geochemistry in Proposed Snafu/Tarfu SMA Area



Zinc - Zn

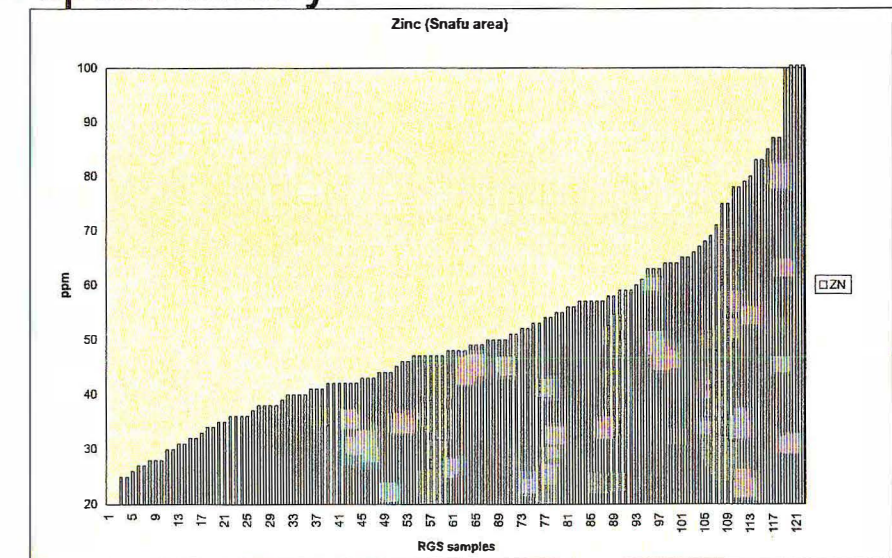
- 0 - 60 ppm
- 60.1 - 75 ppm
- 75.1 - 90 ppm
- 90.1 - 180 ppm



Detection Limit: 2 ppm
 Method: AAS - atomic absorption spectrometry

# Samples (n)	122
Maximum	180
Median	48

GSC Open File 1217



Proposed Snafu / Tarfu
 Natural Environment Park
 Special Management Area
 (September 2002 outline)

Confidential

RGS
 Zinc - Zn

Scale 1:250 000

