



Curragh Resources Inc.

P.O. Box 1000
Faro, Yukon
Y0B 1K0
Tel: (403) 994-2600

005072

TELECOPIER COVER LETTER

TO:

LEE

TELECOPIER NO. 16686516

FROM:

NAME: J. Zbertn. II

CURRAGH RESOURCES INC., Box 1000, Faro, Yukon, Y0B 1K0

TOTAL NO. OF PAGES: 3
(Including Cover Letter)

DATE: July 24 TIME: _____

OPERATOR mg.

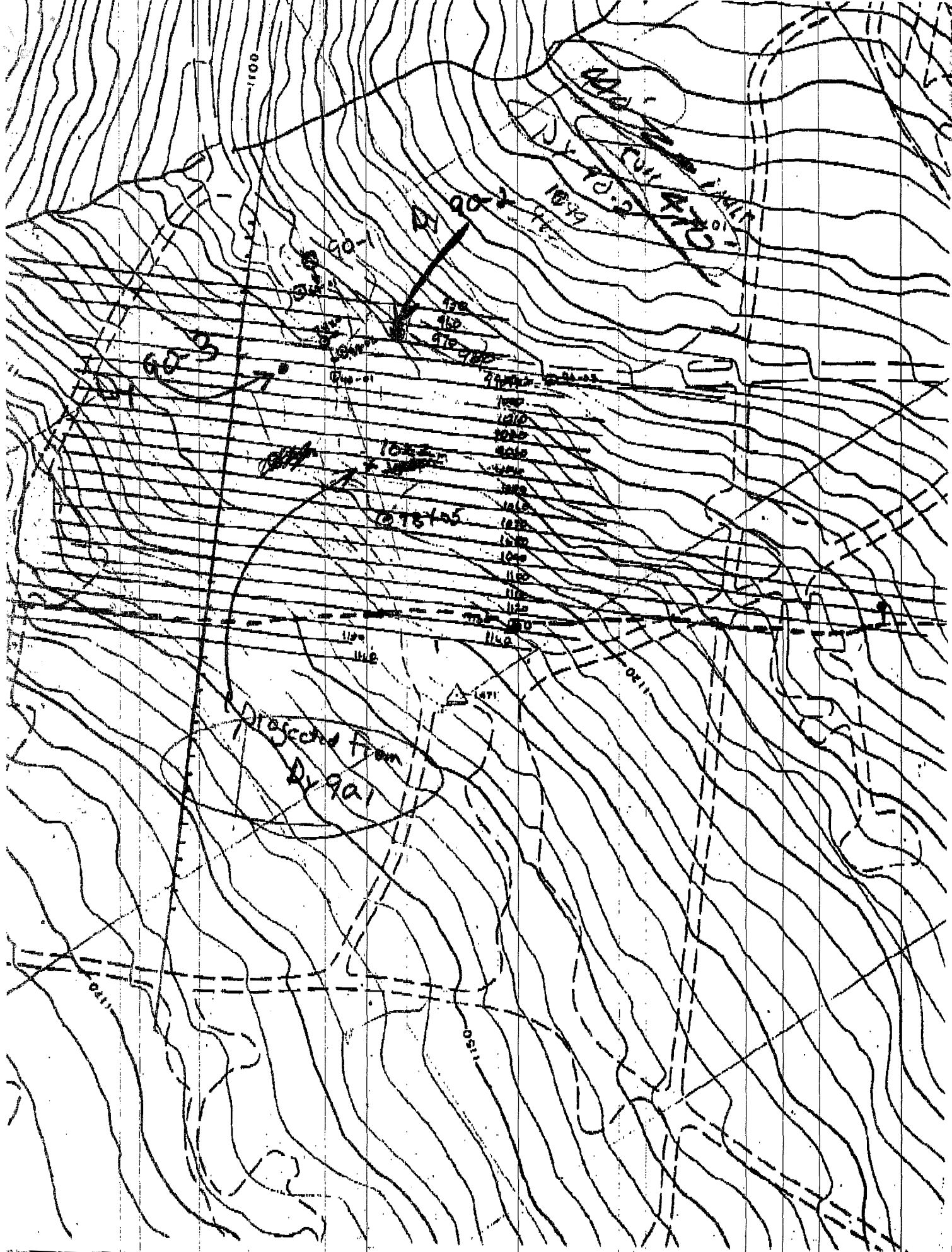
We are transmitting from the following:
Xerox FAX 7020 - 24 hours (403) 994-2664

If you do not receive all pages please call back as soon as possible.

MESSAGE

Following will be a plan view of
Section 15+00 E (1:1000) and a plan of the
Dy area (1:2000).

The section is straightforward, no comments required.
The plan displays the 3 point problem for
the fault. The precise point for the fault
intersected in Dy 90-1 occurs at an elevation
of 1022m AMSL. The strike lines for the
fault do not coincide with this data. Therefore
the strike of the fault may be oriented in
a "more" North-South trend. This may require
Dy 90-2 go significantly deeper than originally estimated
ie greater than 470'.



DY 90-3

DY 90-2

Projected from
DY 90-1

DY 90-2
1075
1080
1085
1090
1095
1100
1105
1110
1115
1120
1125
1130
1135
1140
1145
1150
1155
1160
1165
1170
1175
1180
1185
1190
1195
1200
1205
1210
1215
1220
1225
1230
1235
1240
1245
1250
1255
1260
1265
1270
1275
1280
1285
1290
1295
1300
1305
1310
1315
1320
1325
1330
1335
1340
1345
1350
1355
1360
1365
1370
1375
1380
1385
1390
1395
1400
1405
1410
1415
1420
1425
1430
1435
1440
1445
1450
1455
1460
1465
1470
1475
1480
1485
1490
1495
1500
1505
1510
1515
1520
1525
1530
1535
1540
1545
1550
1555
1560
1565
1570
1575
1580
1585
1590
1595
1600
1605
1610
1615
1620
1625
1630
1635
1640
1645
1650
1655
1660
1665
1670
1675
1680
1685
1690
1695
1700
1705
1710
1715
1720
1725
1730
1735
1740
1745
1750
1755
1760
1765
1770
1775
1780
1785
1790
1795
1800
1805
1810
1815
1820
1825
1830
1835
1840
1845
1850
1855
1860
1865
1870
1875
1880
1885
1890
1895
1900
1905
1910
1915
1920
1925
1930
1935
1940
1945
1950
1955
1960
1965
1970
1975
1980
1985
1990
1995
2000