

"This sheet is issued as a preliminary guide to prospectors for which the Department accepts no responsibility as it is impossible to eliminate errors before subsequent surveys have been made. Every effort has been made to show as accurately as possible the location of claims."
 "This sheet will be revised from time to time upon receipt of more accurate information."

SHEET 105-C-4

LATITUDE 60° 00' TO 60° 15'
 LONGITUDE 133° 30' TO 134° 00'

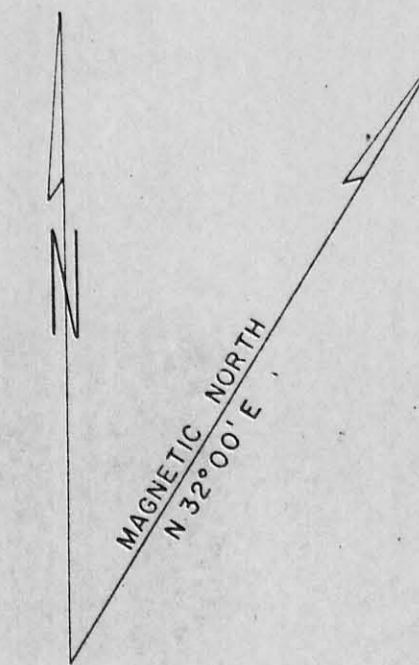
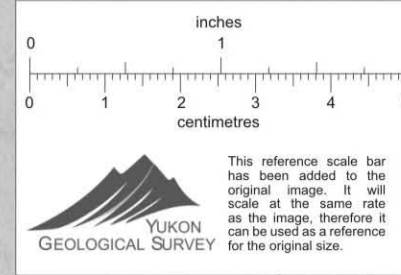
LUBBOCK

CANADA
 DEPARTMENT OF NORTHERN AFFAIRS AND NATIONAL RESOURCES
 NORTHERN ADMINISTRATION AND LANDS BRANCH
 MINING AND LANDS DIVISION

SCALE: 1/2 MILE TO 1 INCH

FT. 1500 3000 4500 6000 7500 9000 10500

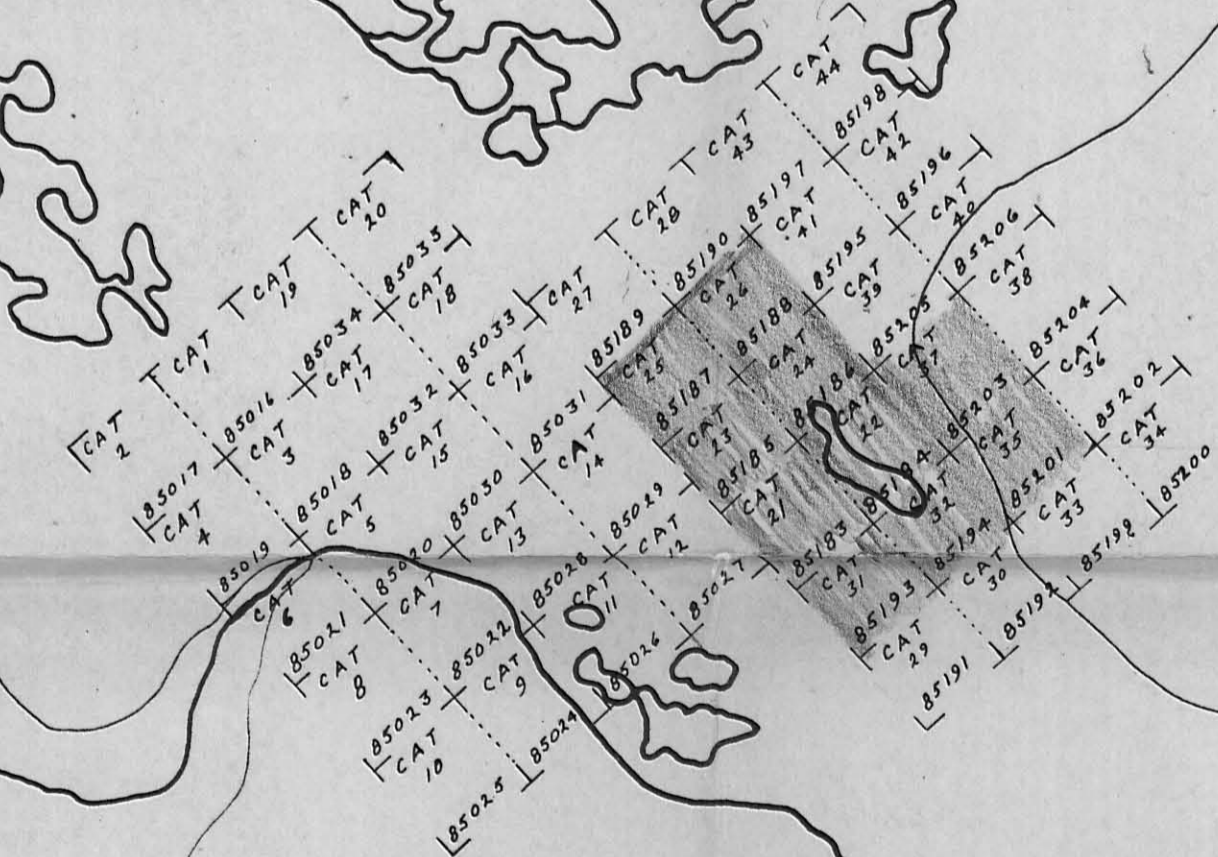
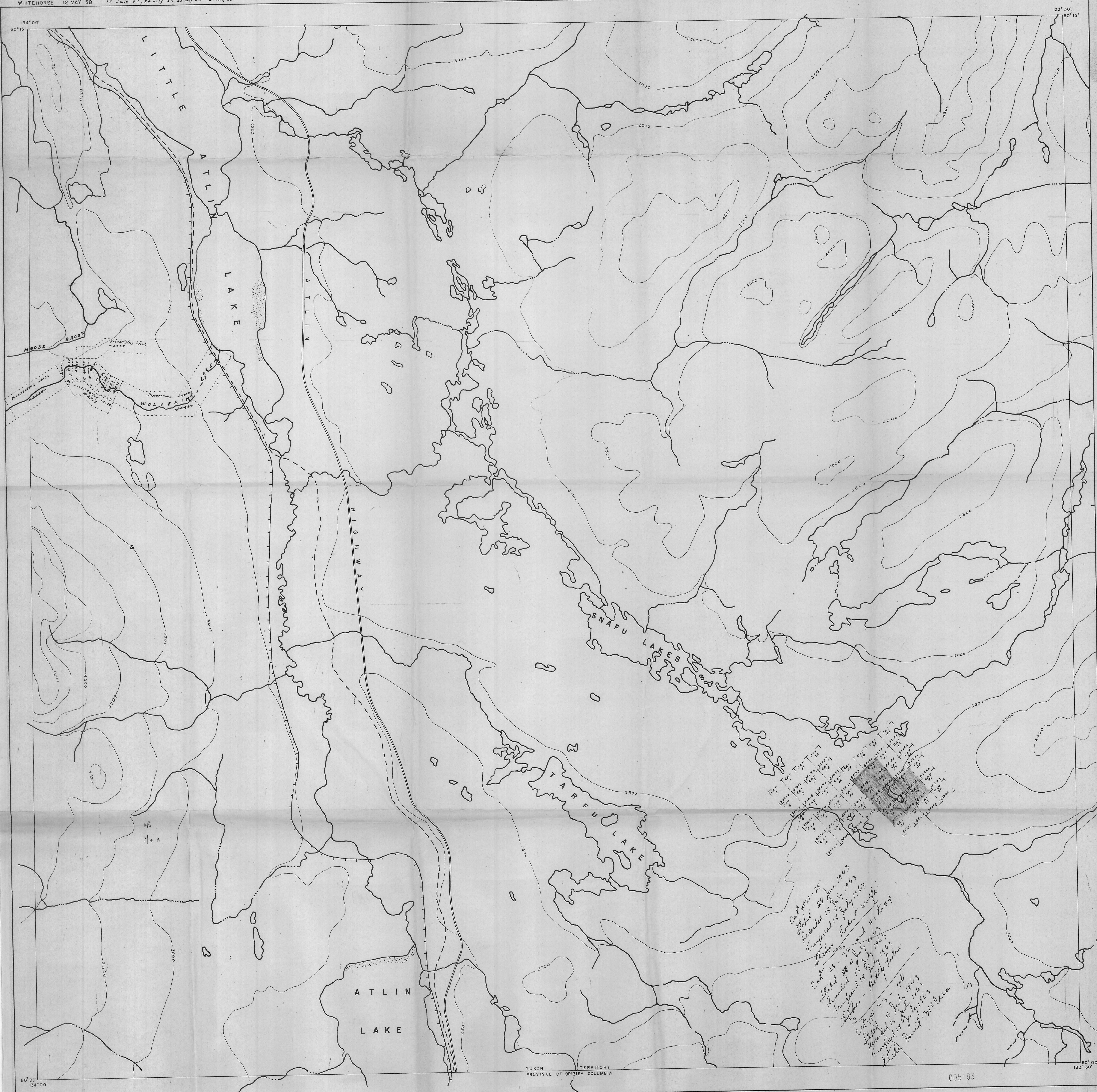
ISSUED UNDER THE AUTHORITY OF THE MINISTER
 OF
 NORTHERN AFFAIRS AND NATIONAL RESOURCES



105-D-8	105-C-5	105-C-6
105-D-1	105-C-4	105-C-3

LOCATIONS OF CLAIMS HEREON ARE ONLY APPROXIMATE
 WHITEHORSE 12 MAY 58 19 July 63, 24 July 65, 25 July 65 27 Aug 63

PRICE 25 CENTS



Handwritten notes:
 Cat #21-28
 Staked 29 June 1963
 Reclaimed 15 July 1963
 Transferred 15 July 1963
 Staked Robert Wolfe
 Cat #29-32 and #41 to #44
 Staked 24 July 1963
 Reclaimed 15 July 1963
 Staked - Daniel McCrean
 Cat #33-40
 Staked 4 July 1963
 Reclaimed 15 July 1963
 Staked Daniel McCrean

YUKON TERRITORY
 PROVINCE OF BRITISH COLUMBIA

005183