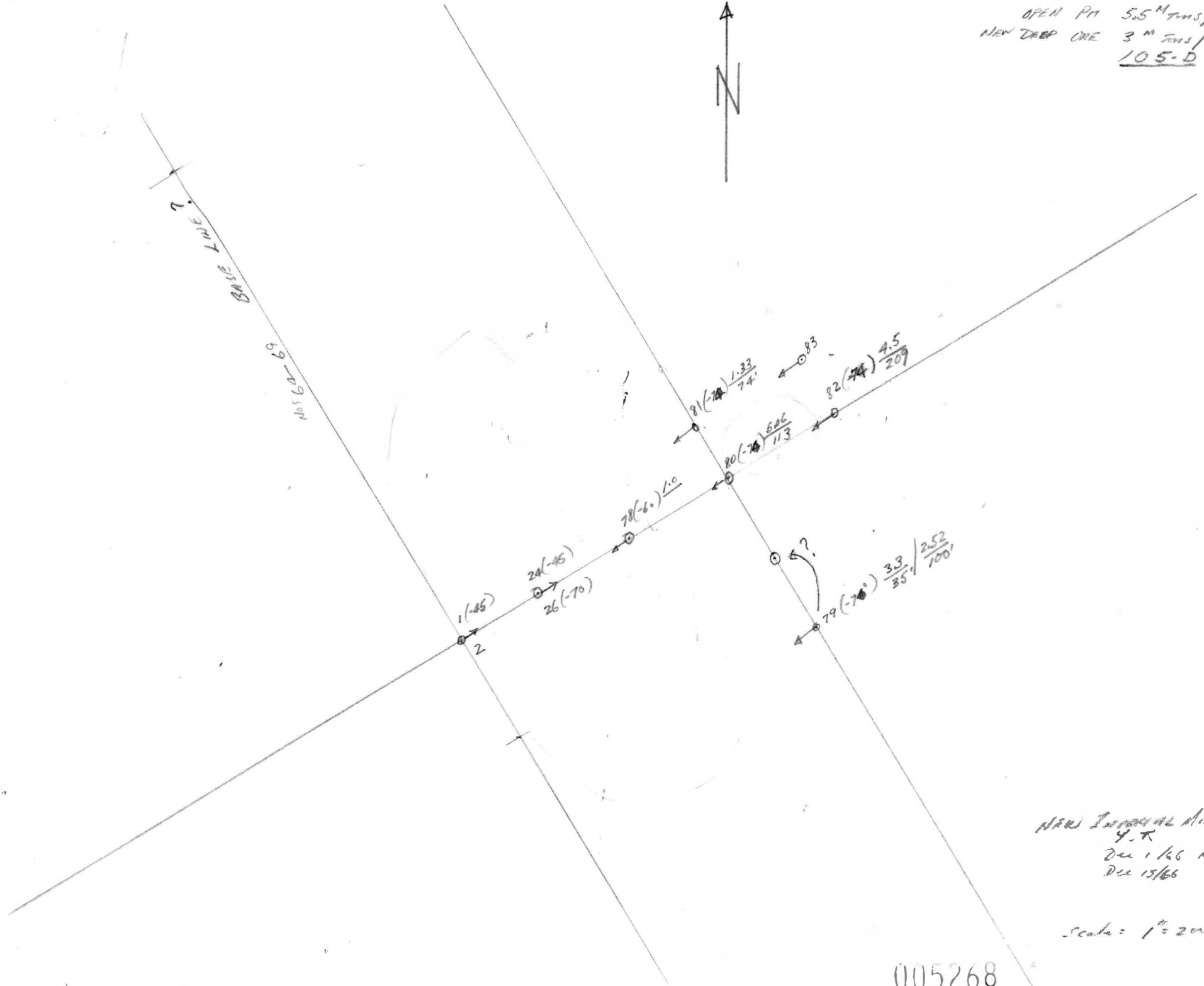


OPEN PIT 5.5 MINS / 1.2%
 NEW DEEP ONE 3 MINS /
105-D



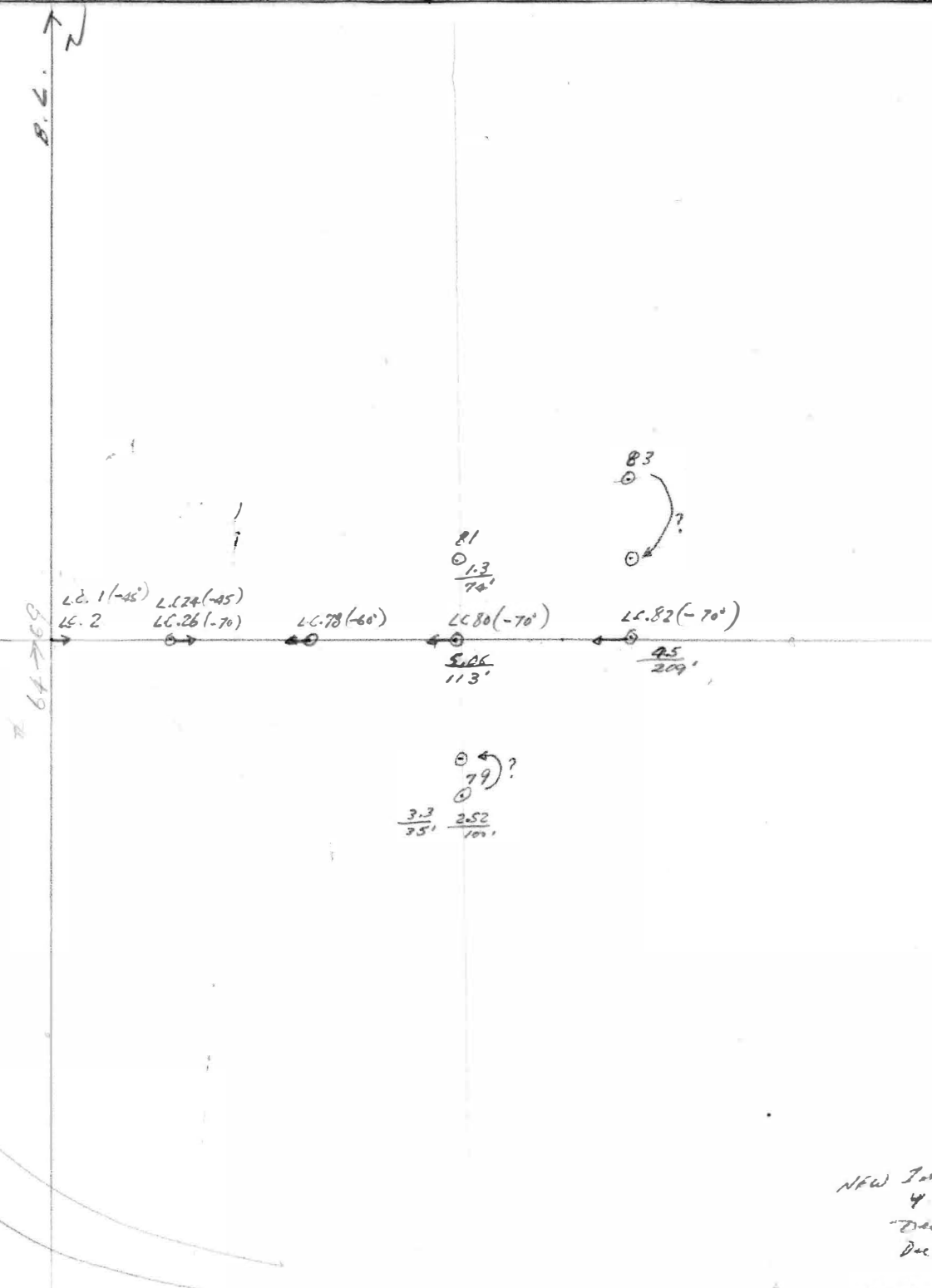
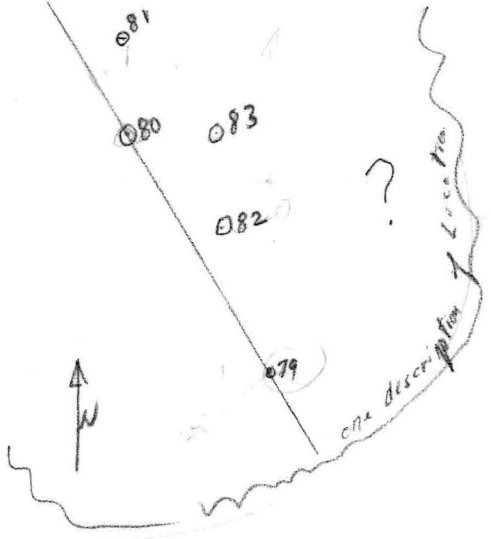
BASE EIGHT
 Nos 62-69



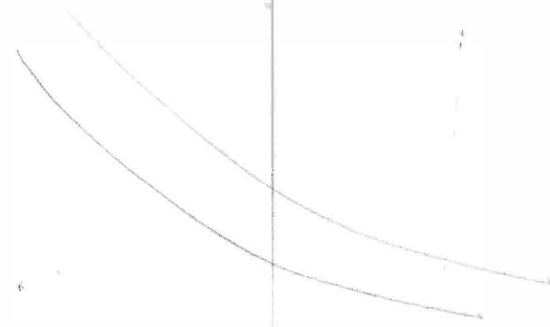
NEW SURVEY LINES
 Y. K.
 Dec 1/66 N. Wilson
 Dec 15/66

Scale = 1" = 200'

005268



$$\frac{600(400)(100)}{8} = \frac{24,000,000}{8} = 3 \text{ miles}$$



NEW JOURNAL N.
 47
 Dec. 1/66
 Dec. 15/66
 Scale = 1" = 200'