

Property Name: Common BOUDETTE OtherLocation: Lat. 60°01' Long. 135°31' NTS 105D/4

005280

Metals: Major Lead, Silver Minor Fluorite, CopperType of Mineral Deposit: VeinHistory and Previous Work:

Noted by the GSC in the late 1940's and first staked in Aug/76 as Hum cl (YA7900) by Amax. Restaked as Naiad cl (YA62141) in Aug/81 by Nat JV (Armco Mineral EL & Chevron Can L), which performed mapping and sampling in 1982.

Description:

Minor galena occurs in wide spaced fractures in volcanic xenoliths 3 cm to 10 m in diameter within a coarse grained quartz monzonite belonging to the Great Plutonic Complex. Rare fractures and up to 1 m wide aplite dykes contain minor malachite stain. Crystals of fluorite 1 to 1.5 inches across occur with pyramidal quartz crystals in vugs up to 1 m in diameter.

References:

G.S.C., p.143

G.S.C., p.139

Boudette Ct.
1982

Doug Eaton

Naiad - 16 cl.

60° 01' N 135° 27' W

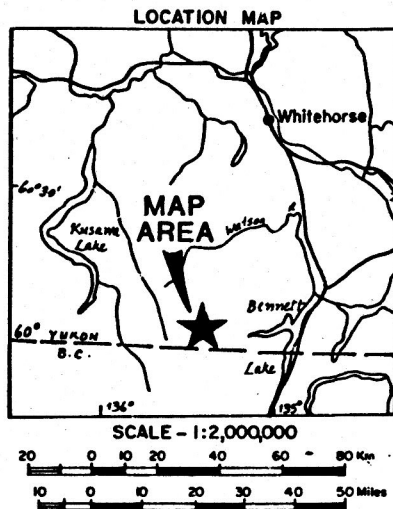
Staked on soil Ag, Pb geochem

- assoc w vn fl. 569.8 g/t
- float 16.62, 4.5202/ton 155.0
- g/carb vn fl. 0.55 Ag 0.71% Pb
- soils ^{avg} ~~up to~~ ^{Pb} 520, ^{Ag} 2.3 ppm over 2000 m
- Cu stained g vn ^{Pb} 710,000, 50 Ag
- chl, ep a xenolith gal, chalcocite.
7100 ppm, 10,000 Pb.

Joanne Nelson worked there.
Lisa Cymbalisky

Boudette Ck Area

DOUG EATON, 1982 Assessment



LEGEND

TERTIARY



MT SKUKUM GROUP rhyolite and andesite flows and pyroclastics



rhyolite and andesite dykes



granite

CRETACEOUS (?)



quartz monzonite - diorite

PRE-CRETACEOUS



undifferentiated metamorphic rocks

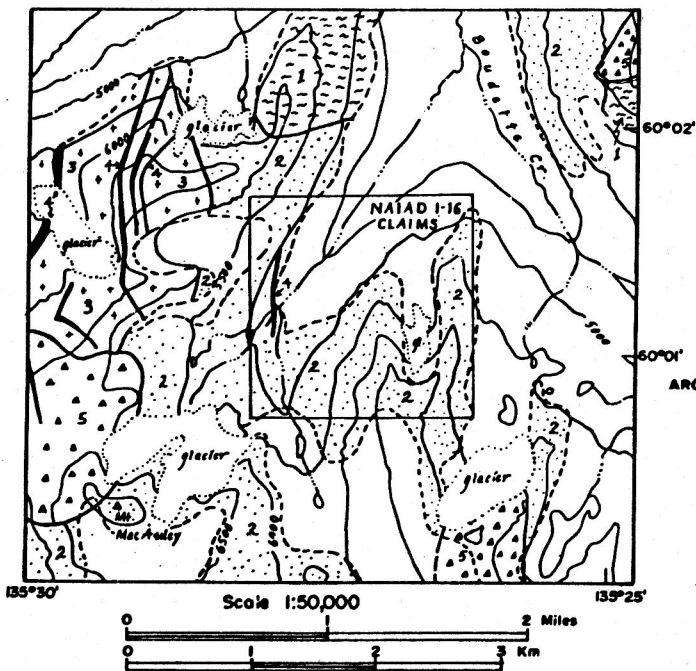


Figure N1

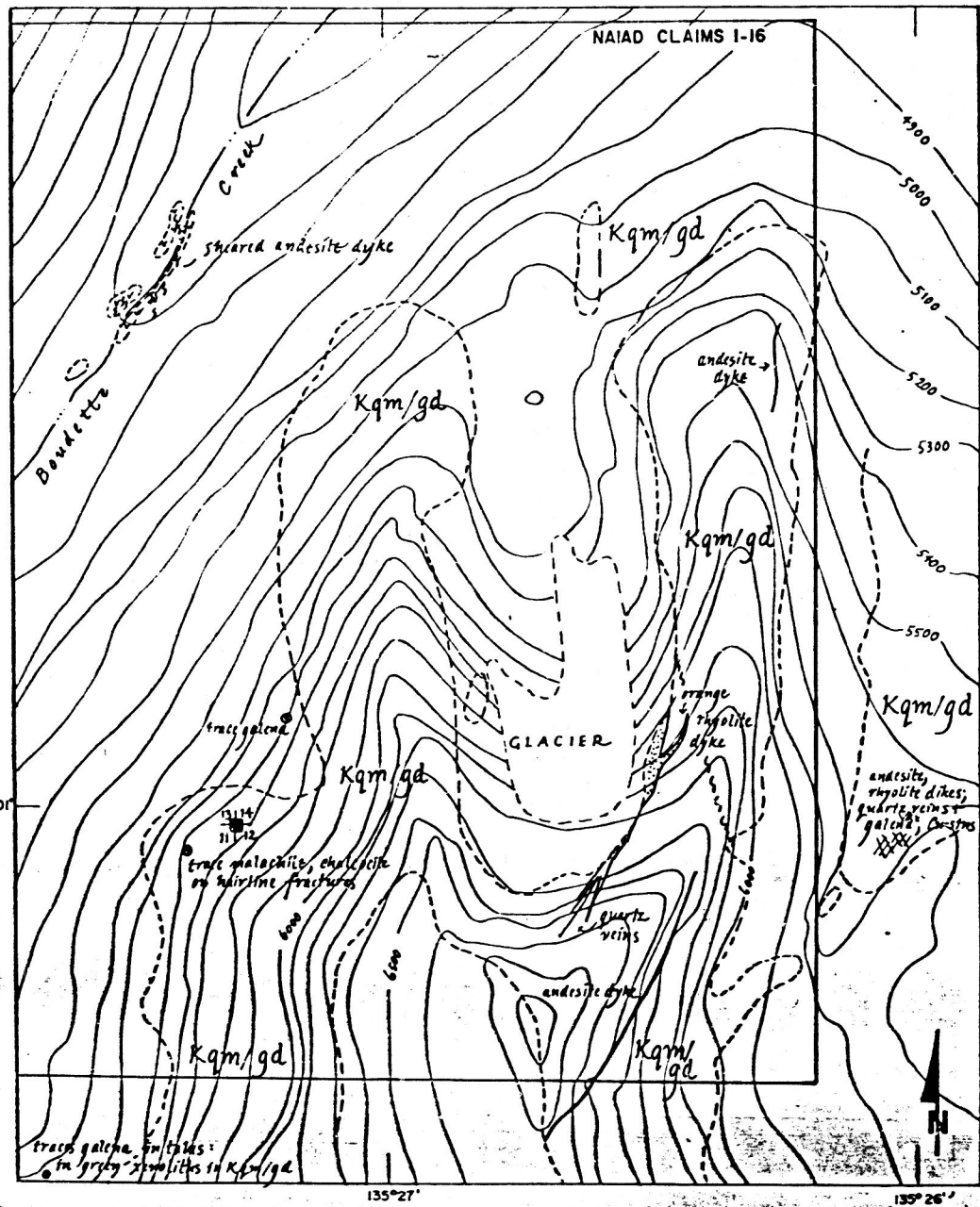
ARCHER, CATHRO & ASSOCIATES (1981) LIMITED

GEOLOGY

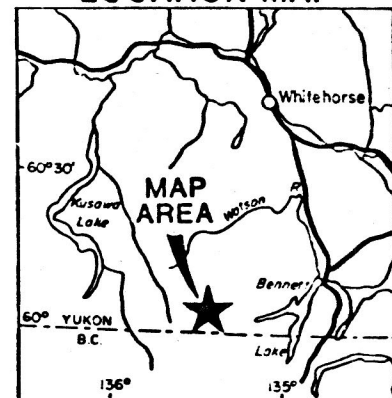
NAIAD PROPERTY

NAT JOINT VENTURE

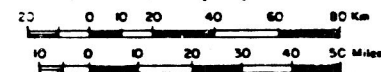
W. Eaton
5/1/83



LOCATION MAP



SCALE - 1:2,000,000



LEGEND

CRETACEOUS

Kqm/gd

Quartz monzonite and/or granodiorite

----- Limit of outcrop

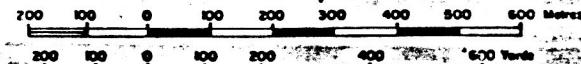
Figure N2

ARCHER, CATHRO & ASSOCIATES (1981) LIMITED

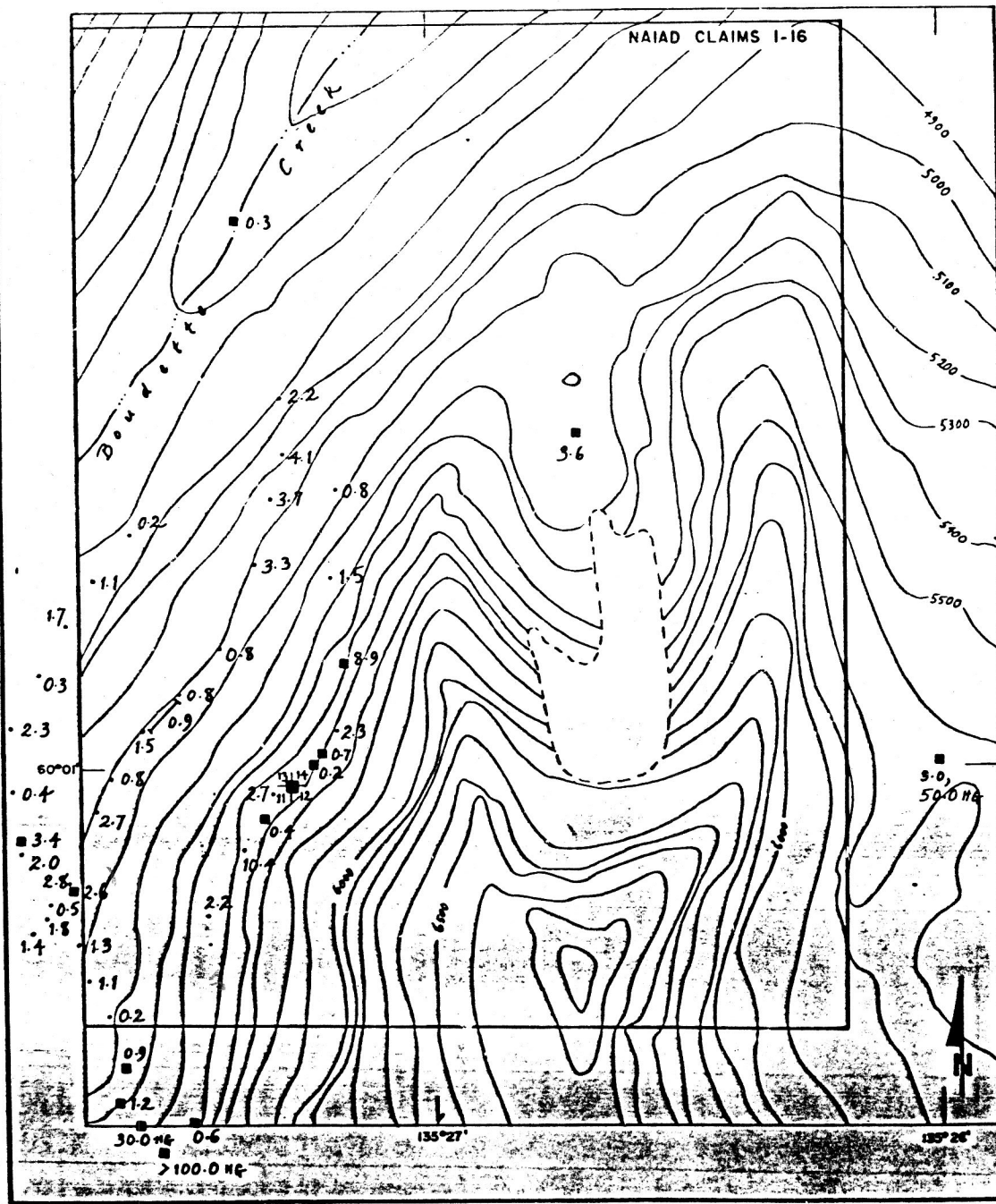
GEOLOGY

NAIAD DETAIL
NAT JOINT VENTURE

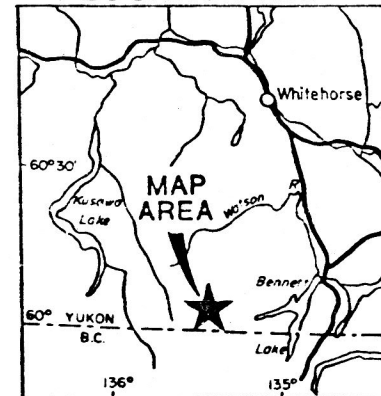
SCALE - 1:10,000



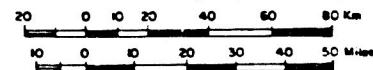
To accompany report dated Dec./82



LOCATION MAP



SCALE - 1:2,000,000



LEGEND

- 1.6 soil sample
 - 1.6 rock sample
 - H.C. 50.0 selected rock specimen
 - 1.6 reconnaissance chip sample
- } Ag in ppm

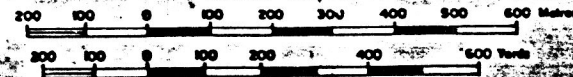
Figure N3

ARCHER, GATHRO & ASSOCIATES (1981) LIMITED

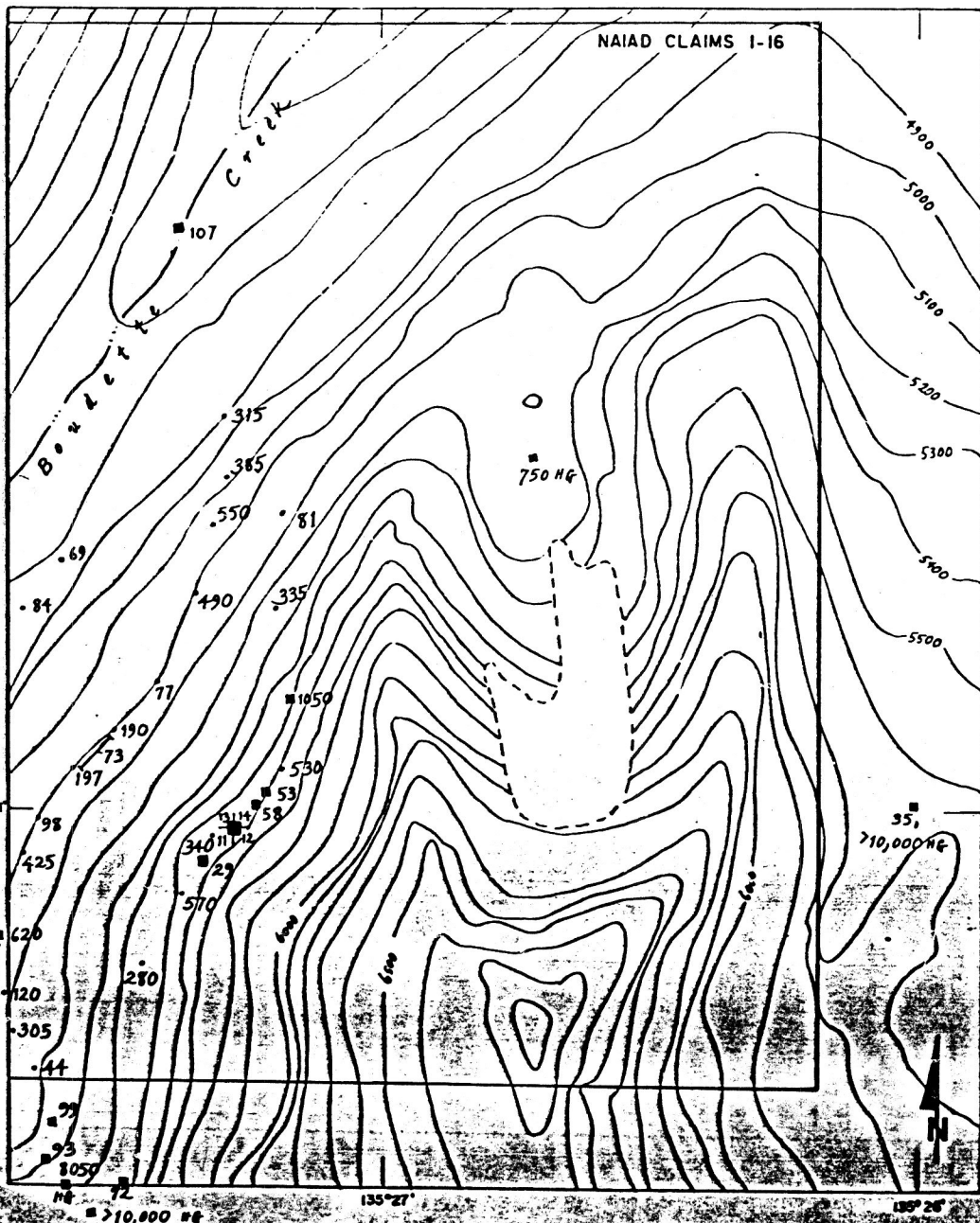
Ag GEOCHEMISTRY

NAIAD DETAIL
NAT JOINT VENTURE

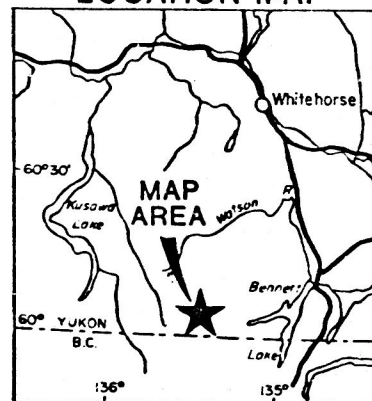
SCALE - 1:10,000



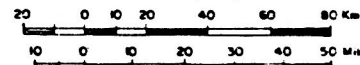
To accompany report dated Dec. /82



LOCATION MAP



SCALE - 1:2,000,000



LEGEND

- 100 soil sample
 - 100 rock sample
 - 5000 HG selected rock specimen
 - ▬ 100 reconnaissance chip sample
- } Pb in ppm

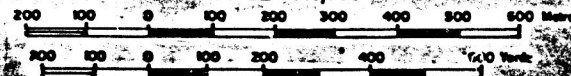
Figure N4

ARCHER, CATHRO & ASSOCIATES (1981) LIMITED

Pb GEOCHEMISTRY

NAIAD DETAIL
NAT JOINT VENTURE

SCALE - 1:10,000



To accompany report dated Dec./82