

ACTION?

DA copy

005323

RIDGE PROPERTY SUBMISSION

(Mt. Skukum Area, Y.T.)

60°0.5'N, 135°18.3'W

N.T.S. 105 D-3

Land Position and Business Interests

Only 3 claims are currently held by the syndicate, to wit Ridge #5; #13 and #18. The surrounding ground is held by Kennco.

The syndicate consists of:

J. R. Woodcock - 20%

A. Thompson (of Brink Hudson & Lefever) - 20%

John Brock - 20%

About 10 other shareholders, collectively 40%.

Woodcock does not feel able to speak for his partners but when pressed mentioned that he had recently optioned ground (more poorly mineralized but better located) for yearly cash payments of \$10,000, \$15,000, etc., to maximum of \$500,000 with a 3% N.S.R. He does not favour net profits type interest and realizes that stock positions would not be liked by Kerr.

One of Woodcock's partners is talking of putting the property into a junior company, but has not acted yet.

General Setting

Within Skukum Group volcanics inside the Bennet Lake Caldera, as mapped in GSC Bulletin 227, 1974.

There is a good probability that the two zones are a re-discovery of the old Shaw deposit described in GSC Bulletin 227.

East Zone:

Quartz stockworks and somewhat erratic quartz veins are present within a possibly intrusive felsite some 200' x 800' areal extent.

The best mineralized zone is curved and semi-continuous, with the following assays:

<u>oz/t Ag</u>	<u>oz/t Au</u>	<u>%Pb</u>	<u>Width</u>
981.	0.72	15.0	0.3'
198.	0.20	3.0	6.0'
33.	0.10	0.6	23.0'
91.	0.04	1.6	8.0'

A weighted averaging of these values yields 0.108 oz/t Ag over an area, slightly optimistically viewed, of 9' x 200'. Assuming a depth of 100', this represents approximately 15,000 tons with a present in place value of \$745. (U.S.)/t.

Areal extension is possible with lower grades over greater widths in quartz stockworks, not all of which have been sampled.

Down dip extension cannot be expected to be great if this is considered an epithermal system.

West Zone

This zone, only 3000' to the W. and 1500' lower in elevation than the East zone, is markedly different. The regional host (acid to intermediate volcanics) is the same but in this case an apparently continuous silicified-bleached zone is directly bounded by volcanics and is subparallel to a felsite contact 150' further W.

The altered zone is 25' wide and over 800' long. Strong sulphide mineralization is present in streaks within this zone and elsewhere nearby. Better values included several of the order of 3.6 oz/t Ag, 0.025 oz/t Au, over 1.5' in a total of 34 assays. One returned 0.79 oz/t Au over 0.5' but is held in doubt by Woodcock.

Conclusions:

The grades and possibility of larger low grade tonnages is appealing, but the appeal is mitigated by the extremely steep terrain (the East Zone being a cirque wall), and the limited exploration area (3 claims).

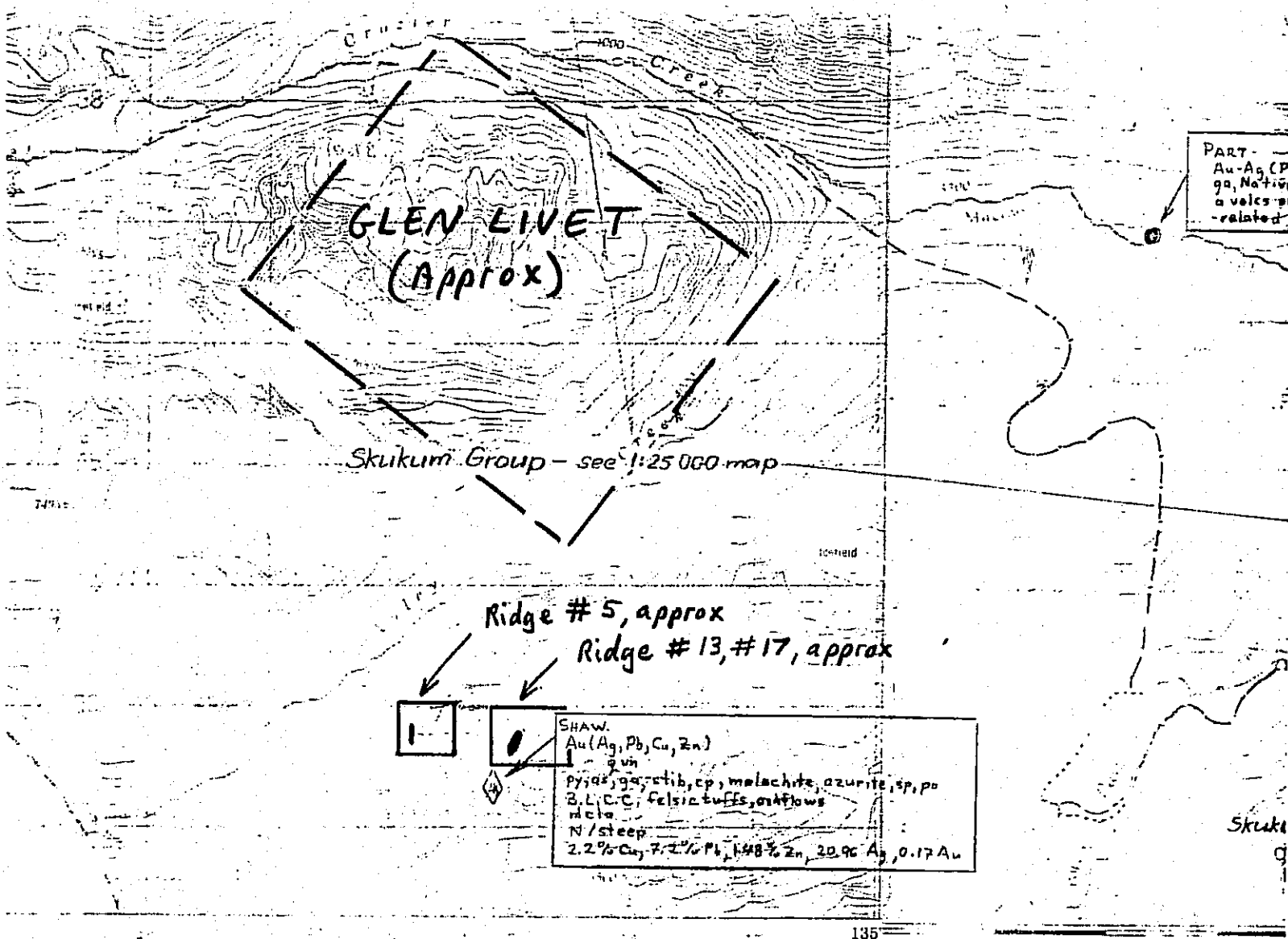
Recommendations:

The property is interesting but not to be jumped on. We should examine it, if it is still available, in July and August, when snow coverage is at a minimum.

Action:

J. R. Woodcock, 685-6720, to be notified shortly with our decision.

D. Arscott
May 2, 1985



PART -
Au-Ag, Cu
ga, Native
a values of
-related

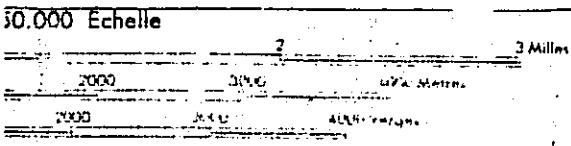
SHAW.
Au (Ag, Pb, Cu, Zn)
py, qz, gal, stib, cp, malachite, azurite, sp, po
S, L, C, C, felsic tuffs, and flows
ricta
N / steep
2.2% Cu, 7.2% Pb, 1.48% Zn, 20.9% Ag, 0.17 Au

15 104 M/14
YUKON RIVER
TERRITORY 105 D/S

Échelle au 1:50,000, par l'INSPECTION DES LEVÉS ET DE LA CARTOGRAPHIE,
MINISTÈRE DE L'INDUSTRIE, DES MINES ET DES RESSOURCES, d'après
des photographies aériennes prises en 1956. Levés sur le terrain en 1966.
Révisée en 1970.

Ces cartes sont en vente au bureau de distribution des cartes,
Ministère de l'Énergie, des Mines et des Ressources, Ottawa.

... and printed by the
Survey Establishment, R.C.A.P. 1050-10
Photographs by the R.C.A.P. 1050-10



This Provisional Map is equivalent to a standard
map in accuracy of content.

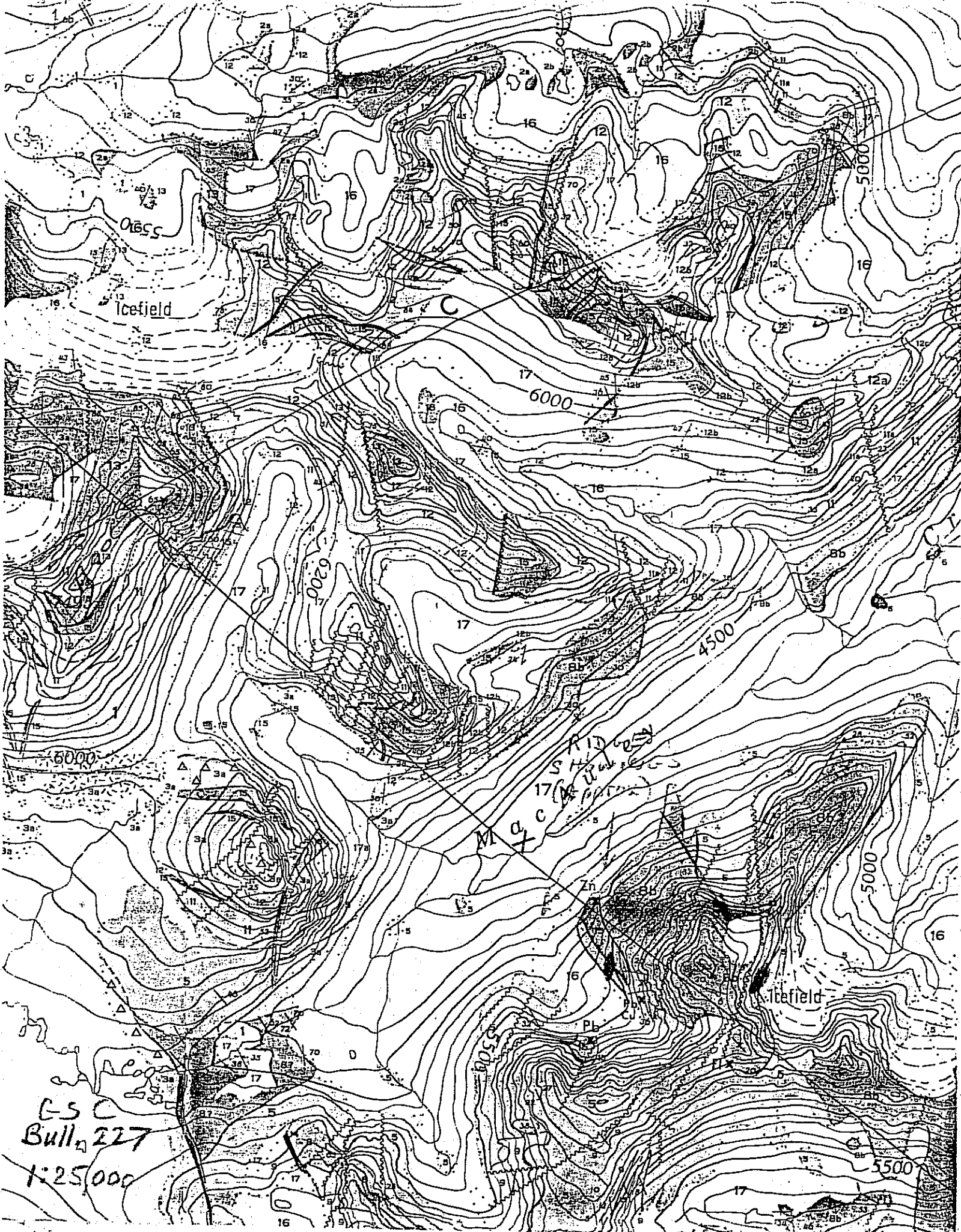
Cette carte est
équivalente à une

These features on this map are not yet official.
Comments or suggestions are invited by the
Survey and Mapping Branch.

These features on this map are not yet official.
Comments or suggestions are invited by the
Survey and Mapping Branch.

... may be obtained from
Map Distribution Office,
Mines and Technical Services

EQUIDISTANCE DES COURBES 100 PIEDS
Élevations en pieds au-dessus du niveau moyen de la mer
Système de référence géodésique nord-américain 1927



E.S.C.
Bull. 227
1:25,000

McAnley ck E zone

claims 5, 13, 17

300x600' gossan

Ag w/ Pb.

A 227 - oxid.

dh from E @ base of cliff, horiz

20 Al Thompson (Brit. Hndls)

20 John Brock ()

20 self

40 ~ 10 shareholders.

sim { 10 } → 500,000.
but { 15 }
not { 3% NSR }
dep on him alone.

W. Zone

Asp vns. rel. low p.m.

wed/thur
~~Asp~~ Bell & pencil.

3 L. of infill & of Benet msp.

E Steep
could be ~~1500'~~ 1500' long total.

pt.

within felsite
(intr.?)

200' x 800'

.08
180x7



Expl: DDg from cirque, fan.
Drifting

If assumed continuity, could have on E zone.

200' + x

5302 + .06

79.6

224	90.7	0.04	8'
227	33.5	0.10	23' 8
228	197.8	0.20	6' 8
229	980.7	0.72	0.3'

716.
29

745

1800 x 100
= 180,000

265.

63

-48

15

90 Shaw Au Fe (Ag Pb Cu)

GSC Bul 227 p139.

Claim 2, 19, 17

Report of E. zone

(M... ..)

...

...

...

...

...

...

...

...

...

...

...

0.108	0.10	0.07	0.04	0.04	0.04
4.03	0.10	0.07	0.04	0.04	0.04
<u>0.32</u>	0.10	0.07	0.04	0.04	0.04
2.3	0.10	0.07	0.04	0.04	0.04
1.2	0.10	0.07	0.04	0.04	0.04
0.216	0.10	0.07	0.04	0.04	0.04
<u>294.3</u>	0.10	0.07	0.04	0.04	0.04
728	0.10	0.07	0.04	0.04	0.04
759	0.10	0.07	0.04	0.04	0.04
1188	0.10	0.07	0.04	0.04	0.04
<u>294.3</u>	0.10	0.07	0.04	0.04	0.04
728	0.10	0.07	0.04	0.04	0.04
2969	0.10	0.07	0.04	0.04	0.04
<u>37.3</u>	0.10	0.07	0.04	0.04	0.04
728	0.10	0.07	0.04	0.04	0.04
759	0.10	0.07	0.04	0.04	0.04
1188	0.10	0.07	0.04	0.04	0.04
<u>294.3</u>	0.10	0.07	0.04	0.04	0.04
728	0.10	0.07	0.04	0.04	0.04
759	0.10	0.07	0.04	0.04	0.04
1188	0.10	0.07	0.04	0.04	0.04
<u>294.3</u>	0.10	0.07	0.04	0.04	0.04
728	0.10	0.07	0.04	0.04	0.04
759	0.10	0.07	0.04	0.04	0.04
1188	0.10	0.07	0.04	0.04	0.04
<u>294.3</u>	0.10	0.07	0.04	0.04	0.04
728	0.10	0.07	0.04	0.04	0.04
759	0.10	0.07	0.04	0.04	0.04
1188	0.10	0.07	0.04	0.04	0.04
<u>294.3</u>	0.10	0.07	0.04	0.04	0.04

W