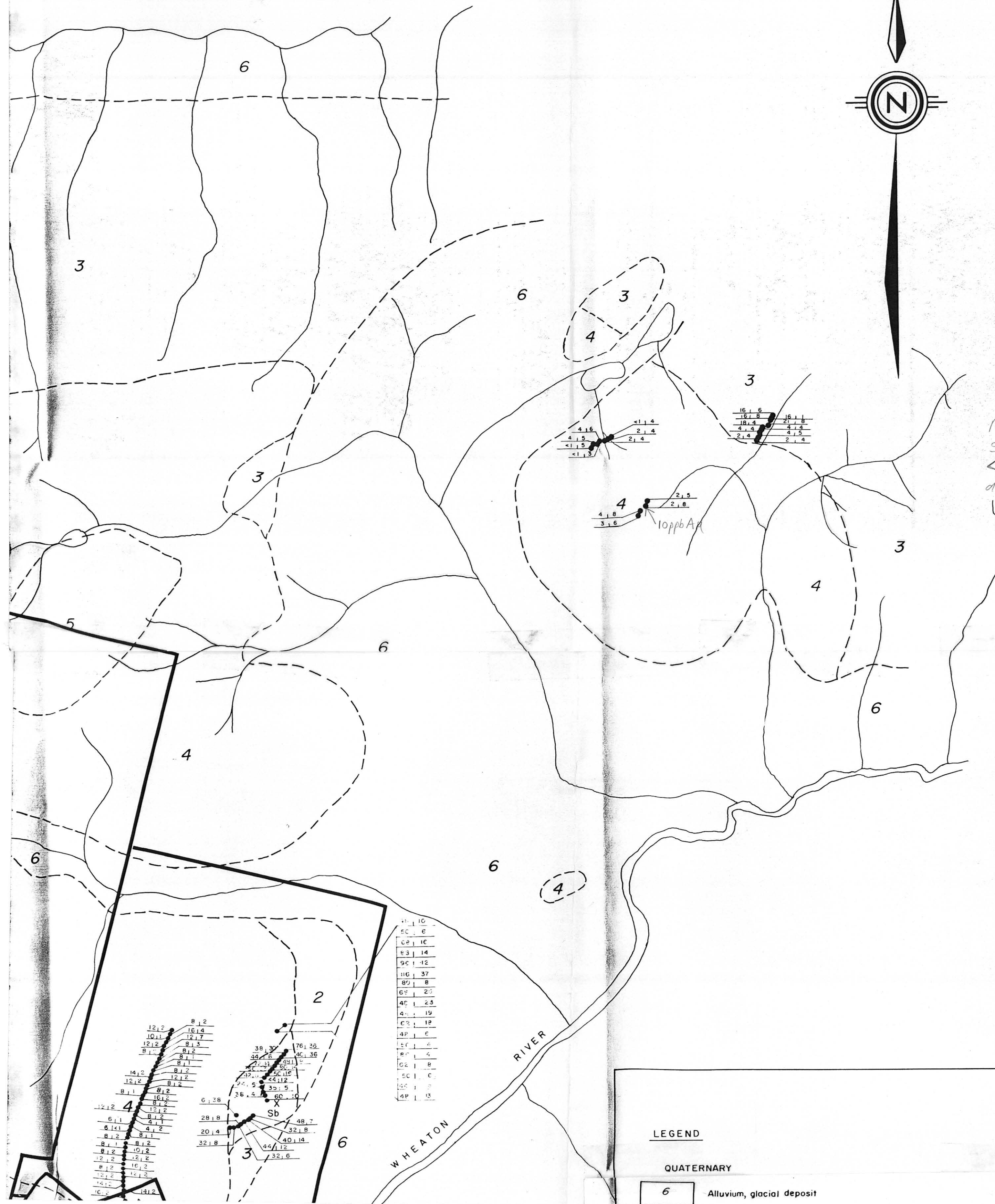


Note all soil samples < 5ppb Au and ≤ 0.4ppm Ag

60°15'



LEGEND

QUATERNARY

6 Alluvium, glacial deposit

TERTIARY

5 Granite porphyry

4 Skukum volcanics

CRETACEOUS

3 Coast crystalline Complex

PALEOZOIC and EARLIER

2 Yukon group

1 Volcanic rocks of uncertain age

○ Lake

— Stream

+ Peak

- - - Geological contact

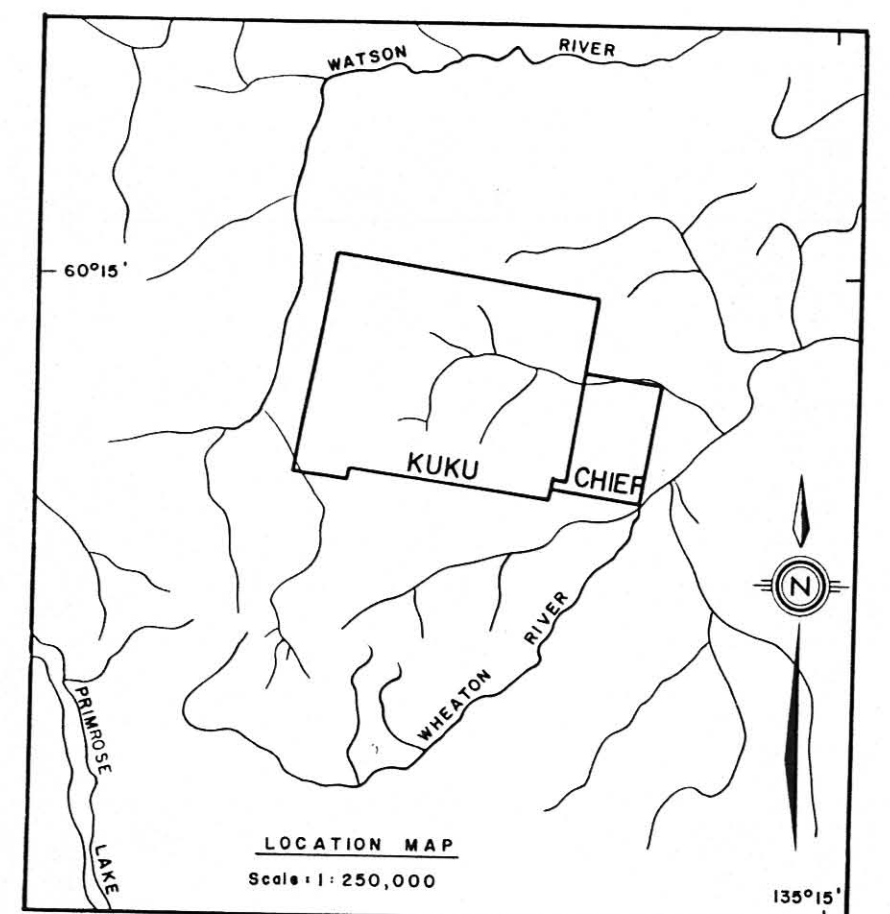
~ ~ ~ Fault

Xsb Mineral showing

JON Claim group

● Cu | Mo Soil Sample Location With Geochemical Results In PPM

(- : not analyzed)

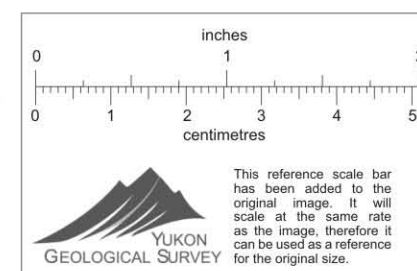


AGIP CANADA LTD.

MT. SKUKUM 005327
YUKON

SOIL SAMPLE LOCATIONS
COPPER & MOLYBDENUM ANALYSES
Project 4008

See note about Au/Ag values



SCALE	1:31,680	AUTHOR	S.L.G.	DATE	DEC 81
DRAWN BY	SBB	N.T.S.	105 D/SW	FIGURE	4008 - 26 b