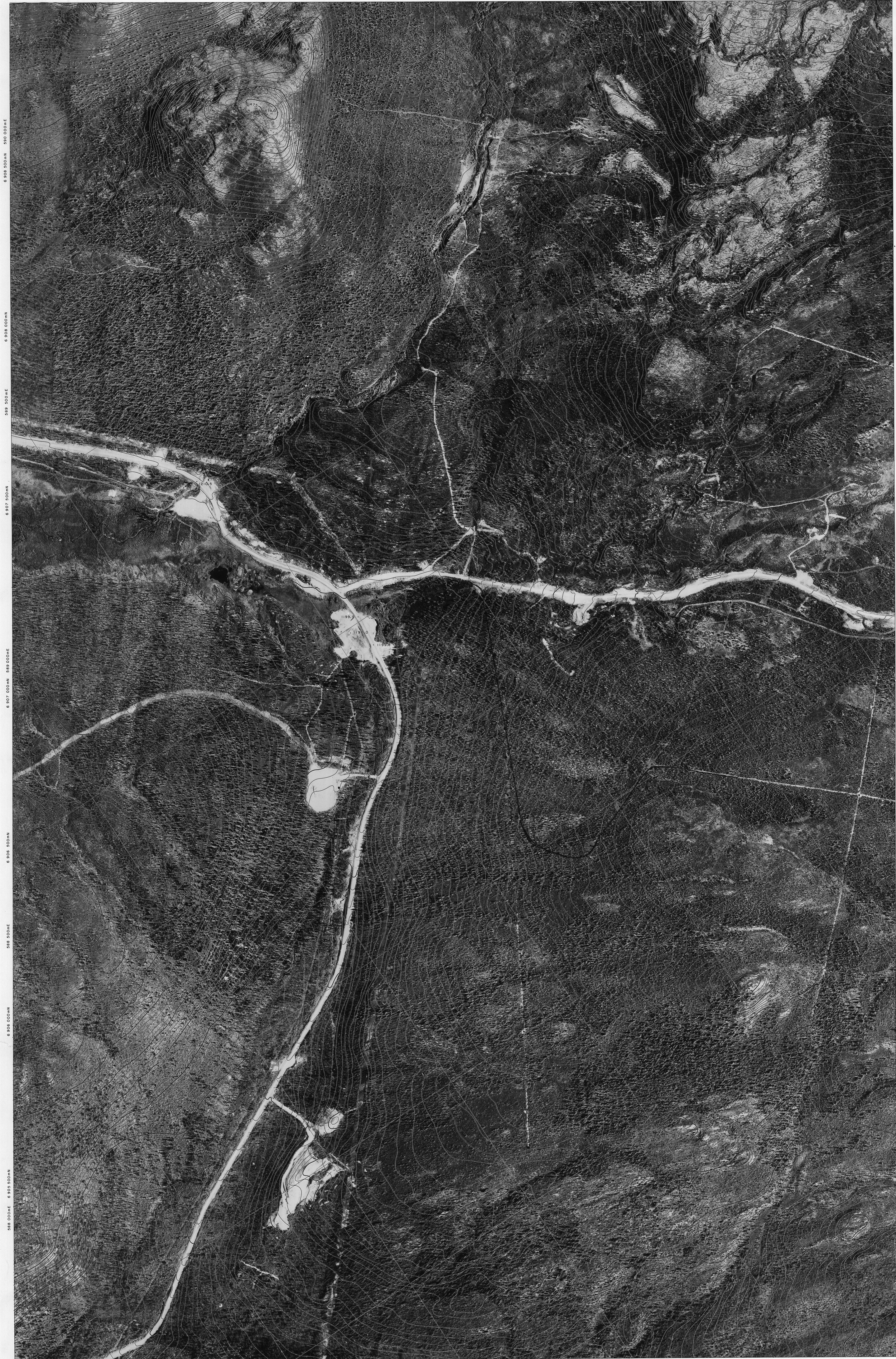
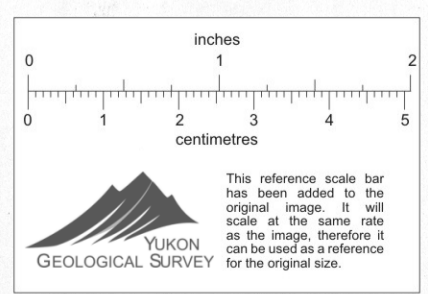


590 500mE 6 908 500mN 591 000mE 591 500mE 6 908 000mN 592 000mE 6 907 500mN 592 500mE



6 905 000mN 588 000mE 588 500mE 6 904 500mN 589 000mE 6 904 000mN 589 500mE 590 000mE 6 903 500mN

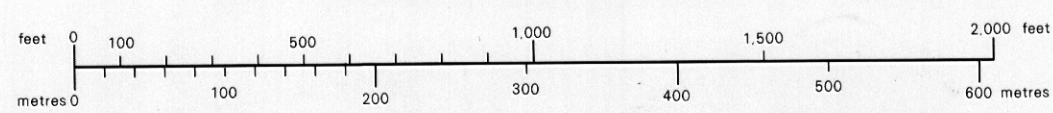
Orthophoto map compiled from aerial photography taken in August, 1979 by North West Survey Corporation International Ltd. Coordinates shown are U.T.M. coordinates based on Clarke's Spheroid of 1866 and are computed for Zone 8. Elevations shown are Geodetic elevations based on the North American Datum, 1927. Horizontal and vertical control survey was performed by Hosford, Impey, Welter & Associates Ltd. and North West Survey Corporation (Yukon) Ltd. in the summer of 1979 for Cyprus Anvil Mining Corporation and is included in a report of the same date.



### CYPRUS ANVIL MINING CORPORATION

### ANVIL AREA

Scale 1:5000  
Contour Interval 5 Metres



NORTH WEST SURVEY CORPORATION INTERNATIONAL LTD.

#### SHEET INDEX

					5
				5	6
				3	4
				2	1
E	F	G	H		

Sheet No. F-6-3 (W 1/2)

005387