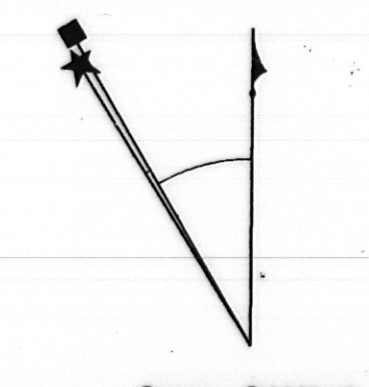
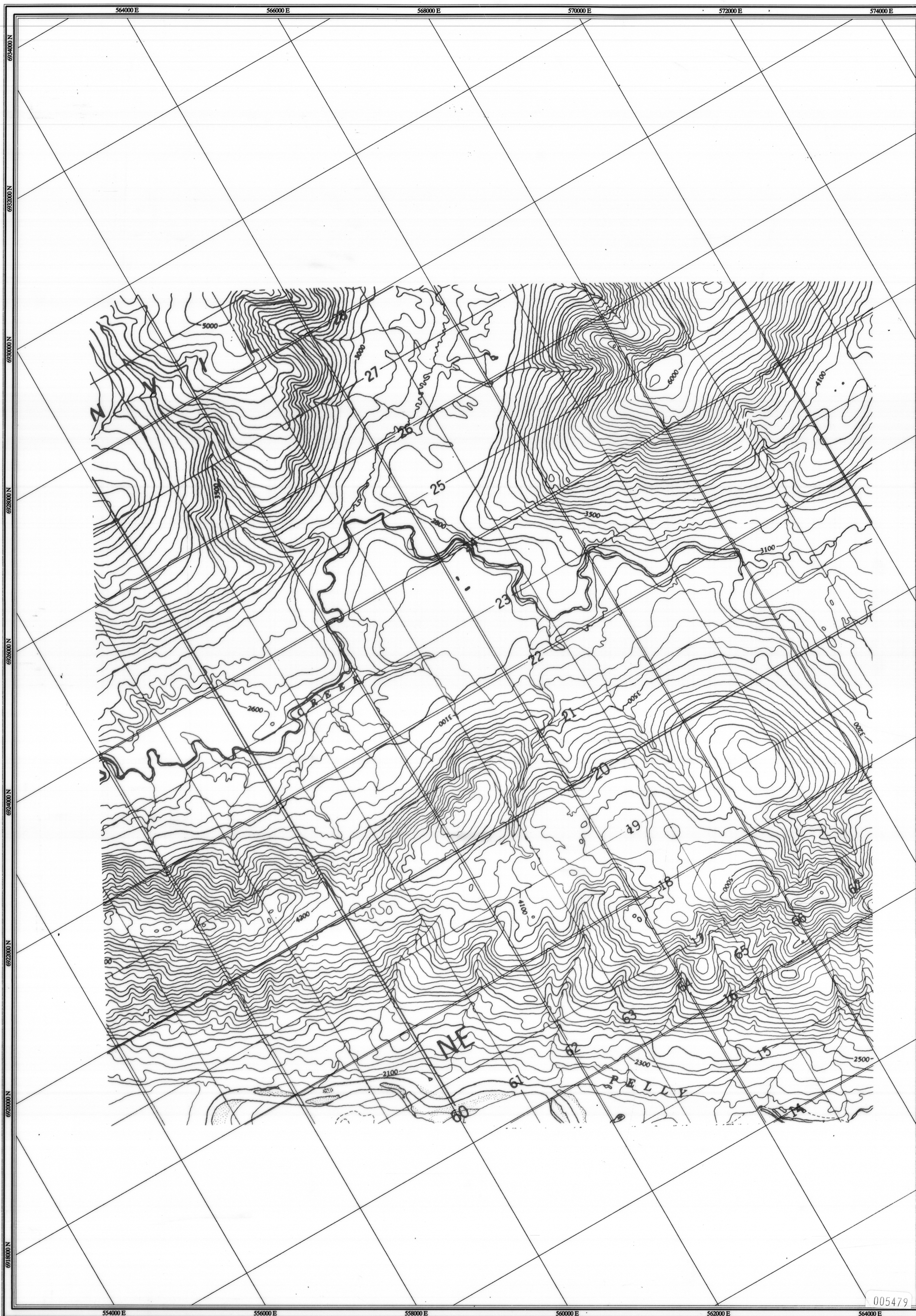
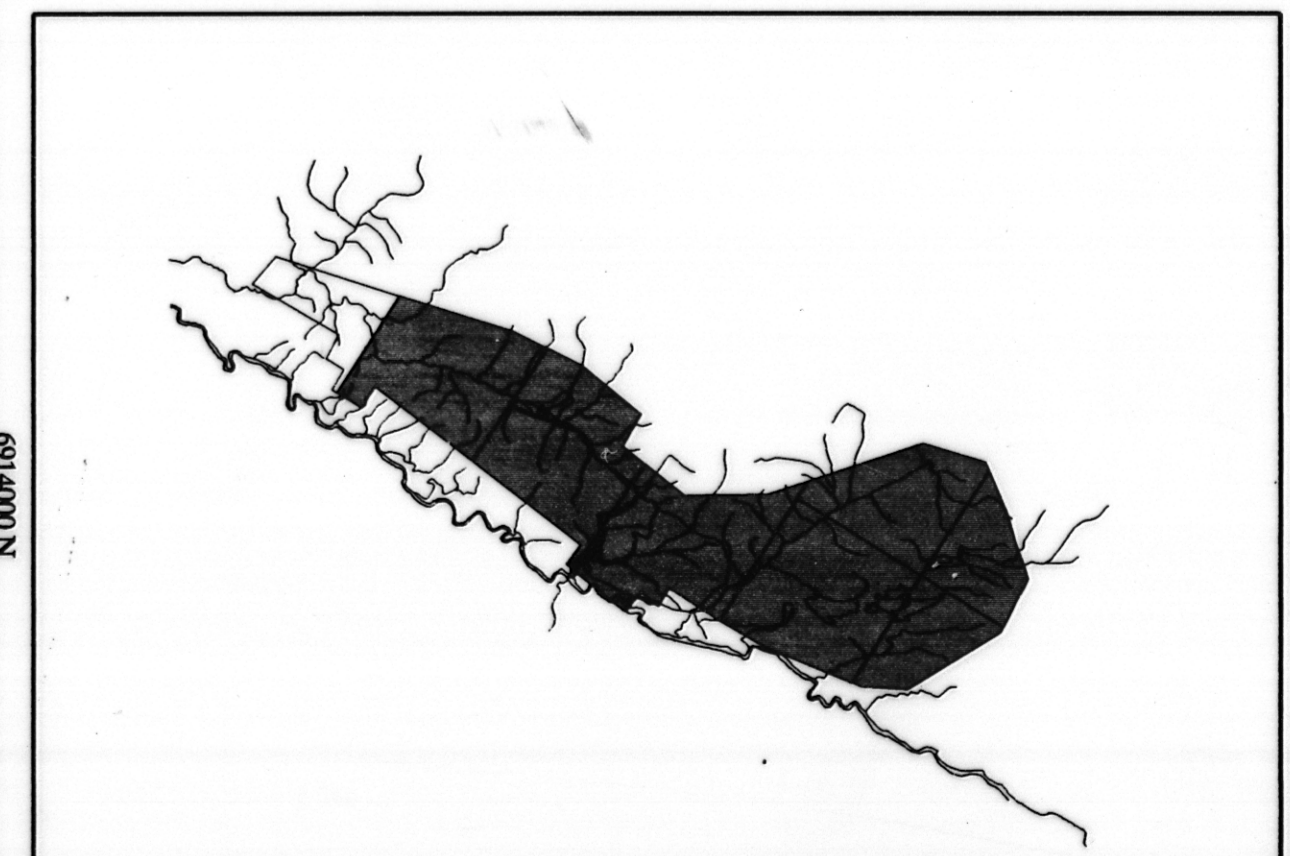
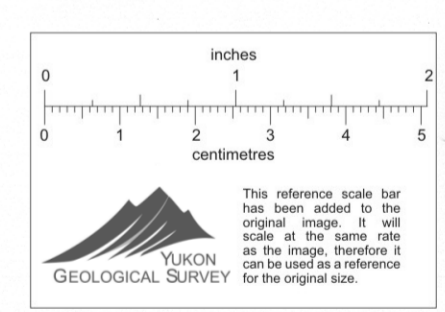


Faro Aerodat
105/K/5
Scale 1:24,000
Base Topography

C6
1-1



Square: Grid North
Star: True North
Arrow: Magnetic North
Angles presented are approximate mean
deviations for centre of NTS sheet.
Use diagram for reference only.
Grid North - True North : 1.59°
Grid North - Magnetic North : 30.35°
Annual change decreasing 4.1"



ANVIL RANGE MINING CORPORATION
BASE TOPOGRAPHIC MAP
FARO, C6
YUKON

SCALE 1:24 000

0 500 1000 1500 2000 metres

aerodat
AERODAT INC.

Date Flown : JUNE - JULY 1996
NTS : 105/K/5
Project : J9650 Map Ref : 1 - 1

005479