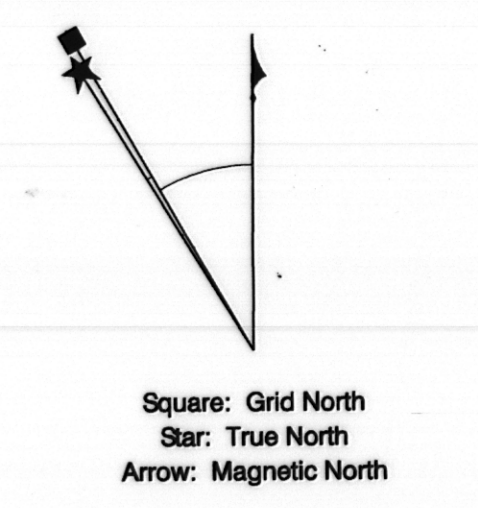
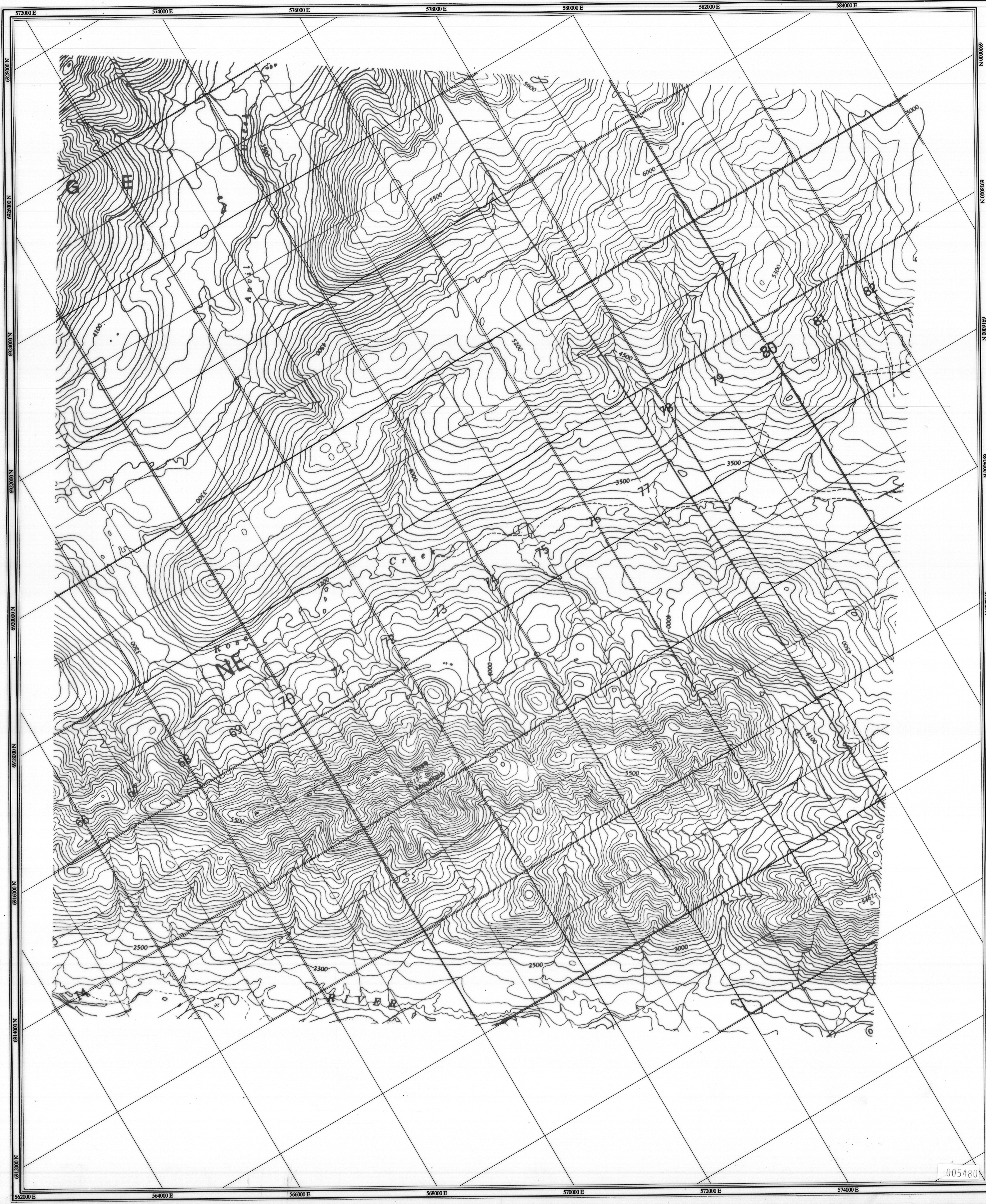


Faro Aerodat 06/96
105/K/5.6
Scale 1:24,000
Base Topography

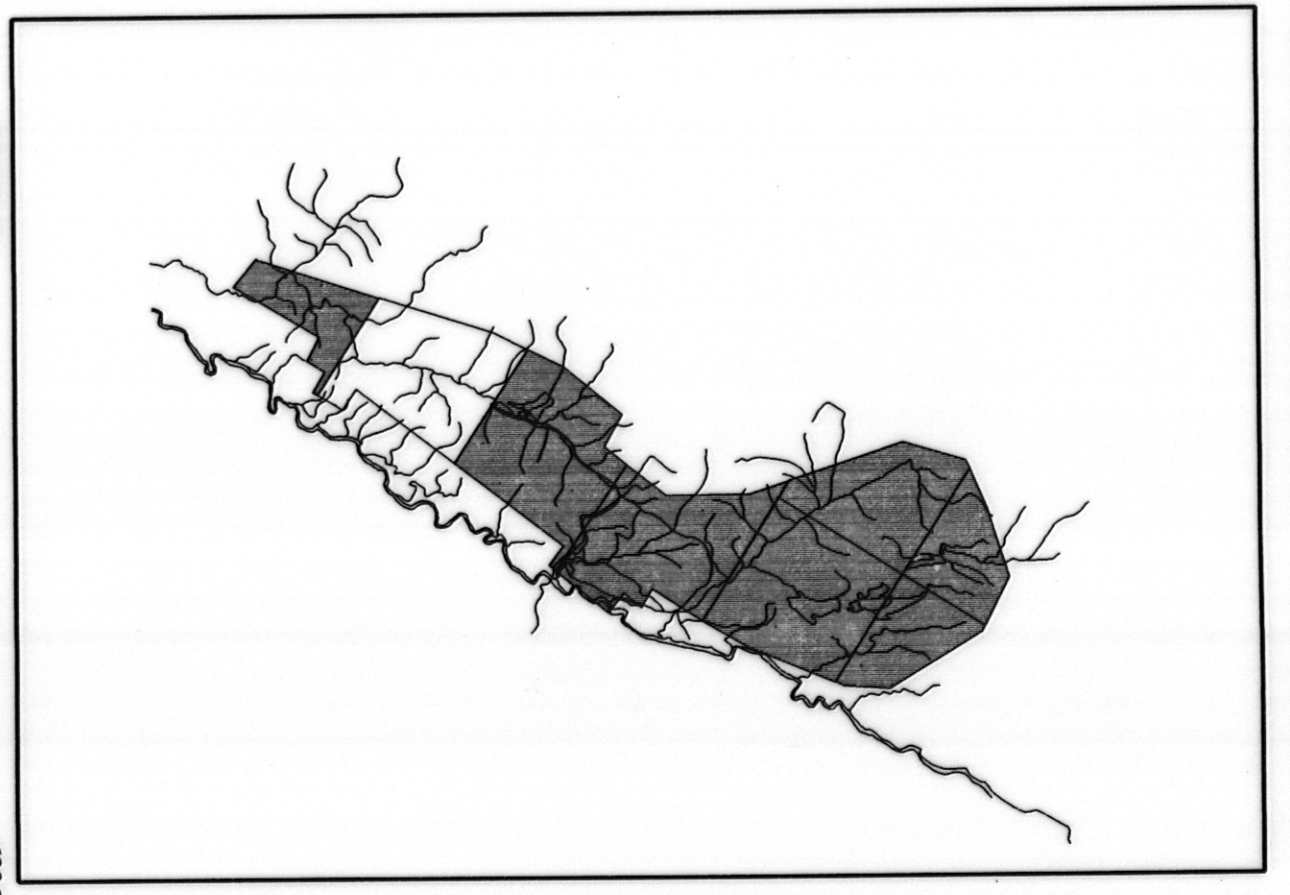
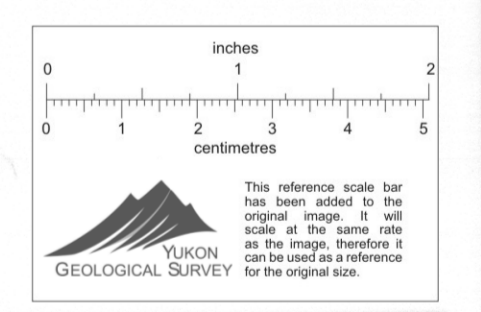
D6
1-1



Square: Grid North
Star: True North
Arrow: Magnetic North

Angles presented are approximate mean deviations for centre of NTS sheet. Use diagram for reference only.

Grid North - True North : 1.59°
Grid North - Magnetic North : 30.36°
Annual change decreasing 4.1'



ANVIL RANGE MINING CORPORATION

BASE TOPOGRAPHIC MAP

FARO, D6
YUKON

SCALE 1:24 000



Date Flown : JUNE - JULY 1996
NTS : 105/K/5.6
Project : J9650 Map Ref : 1 - 1

005480