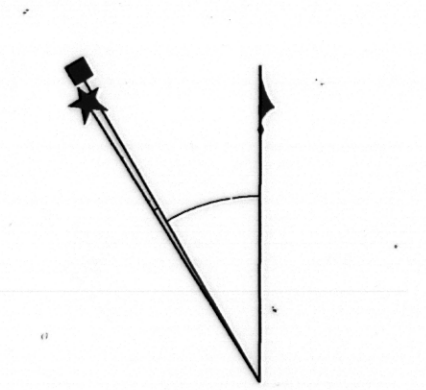
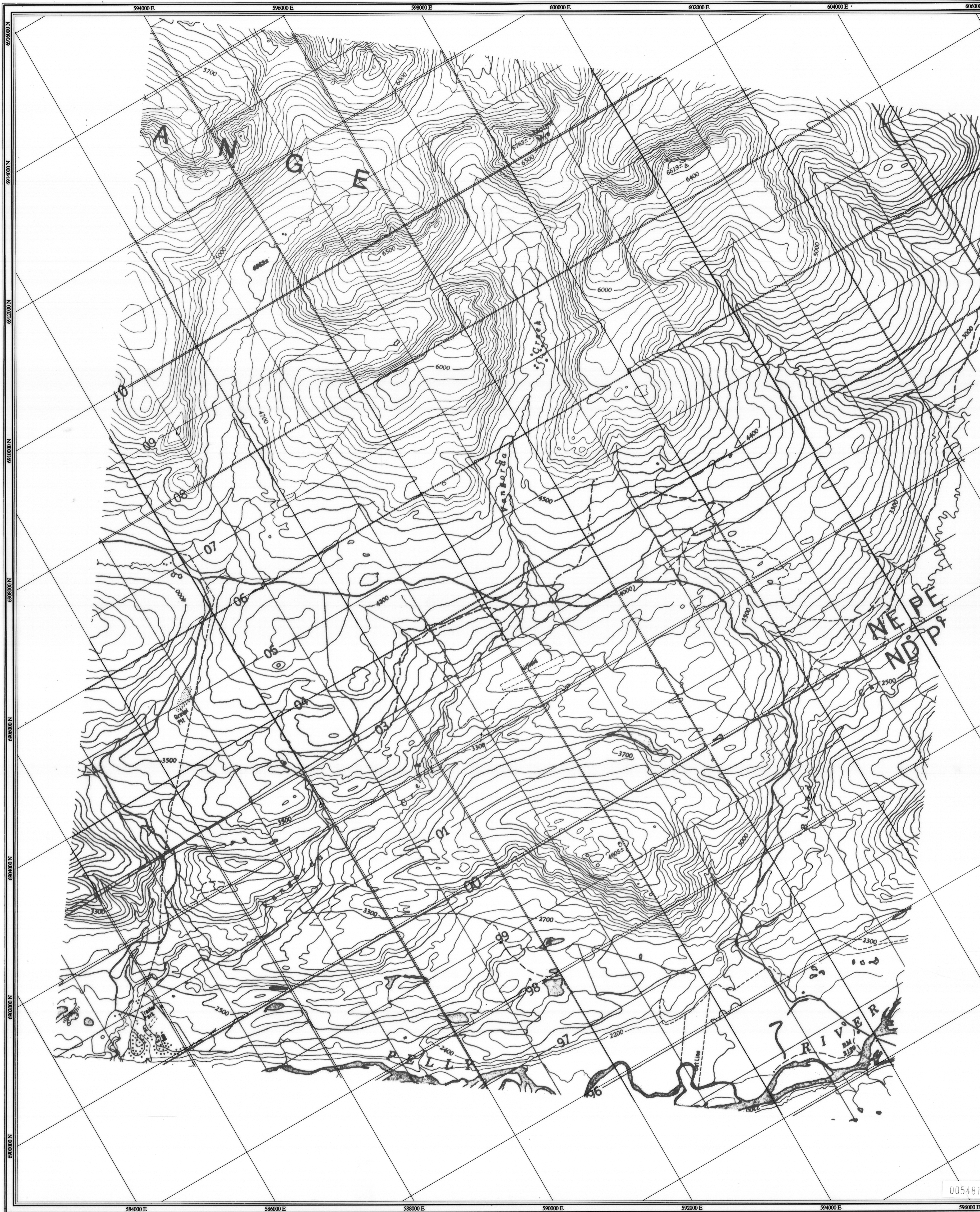


Faro Aerodat 06/96
105/K/3.6
1:84,000
Base Topography

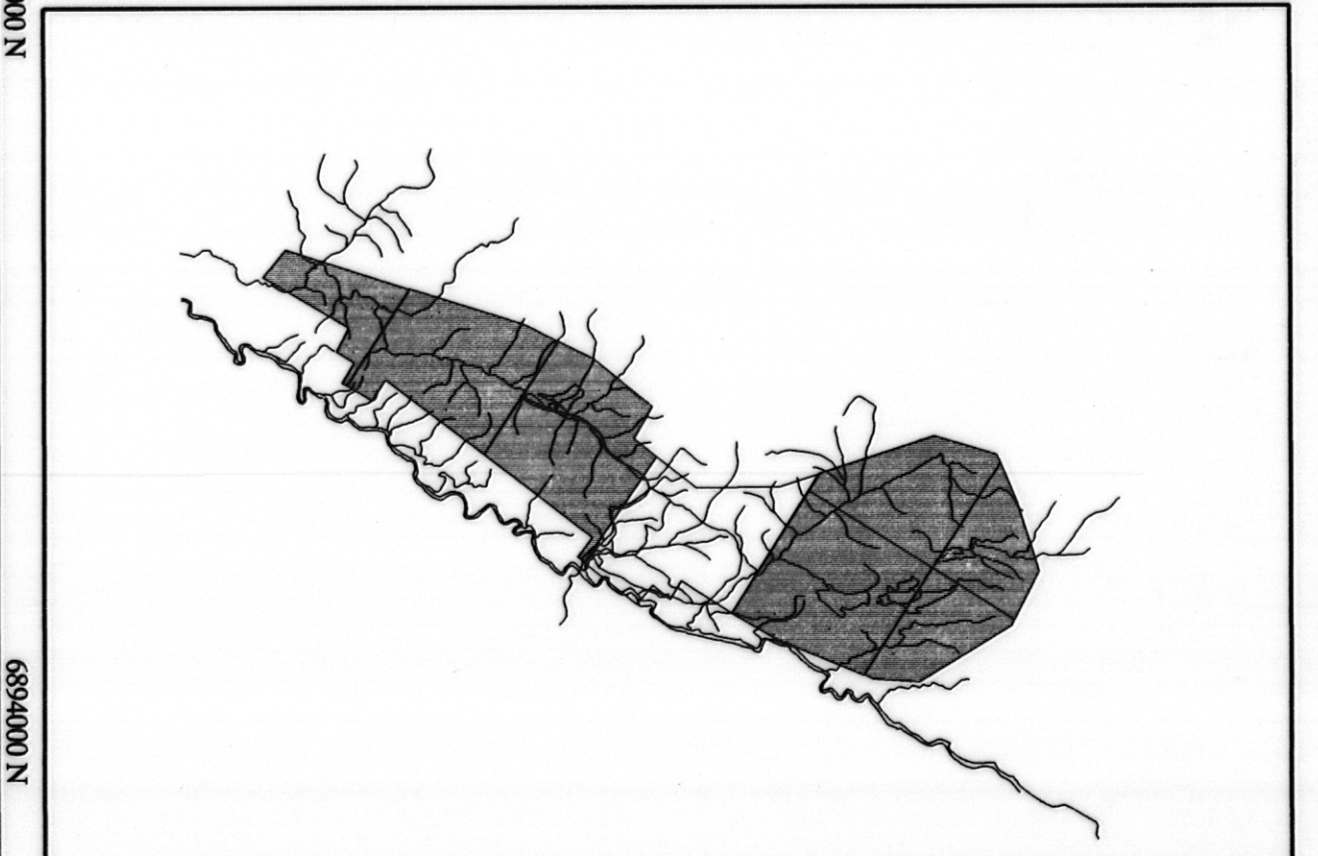
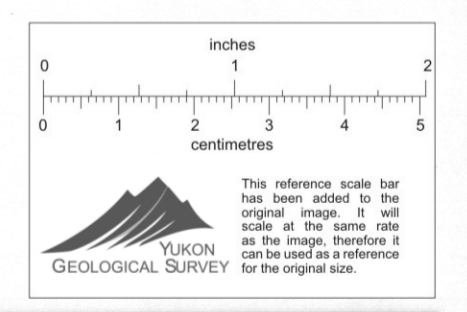
F6
1-1



Square: Grid North
Star: True North
Arrow: Magnetic North

Angles presented are approximate mean deviations for centre of NTS sheet. Use diagram for reference only.

Grid North - True North : 1.5°
Grid North - Magnetic North : 30.35°
Annual change decreasing 4.1"

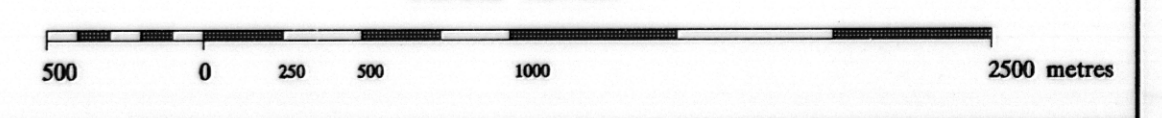


ANVIL RANGE MINING CORPORATION

BASE TOPOGRAPHIC MAP

FARO, F6
YUKON

SCALE 1:24 000



Date Flown : JUNE - JULY 1996
NTS : 105/K/3.6
Project : J9850 Map Ref : 1 - 1

005481