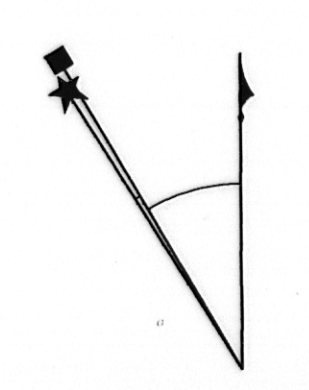
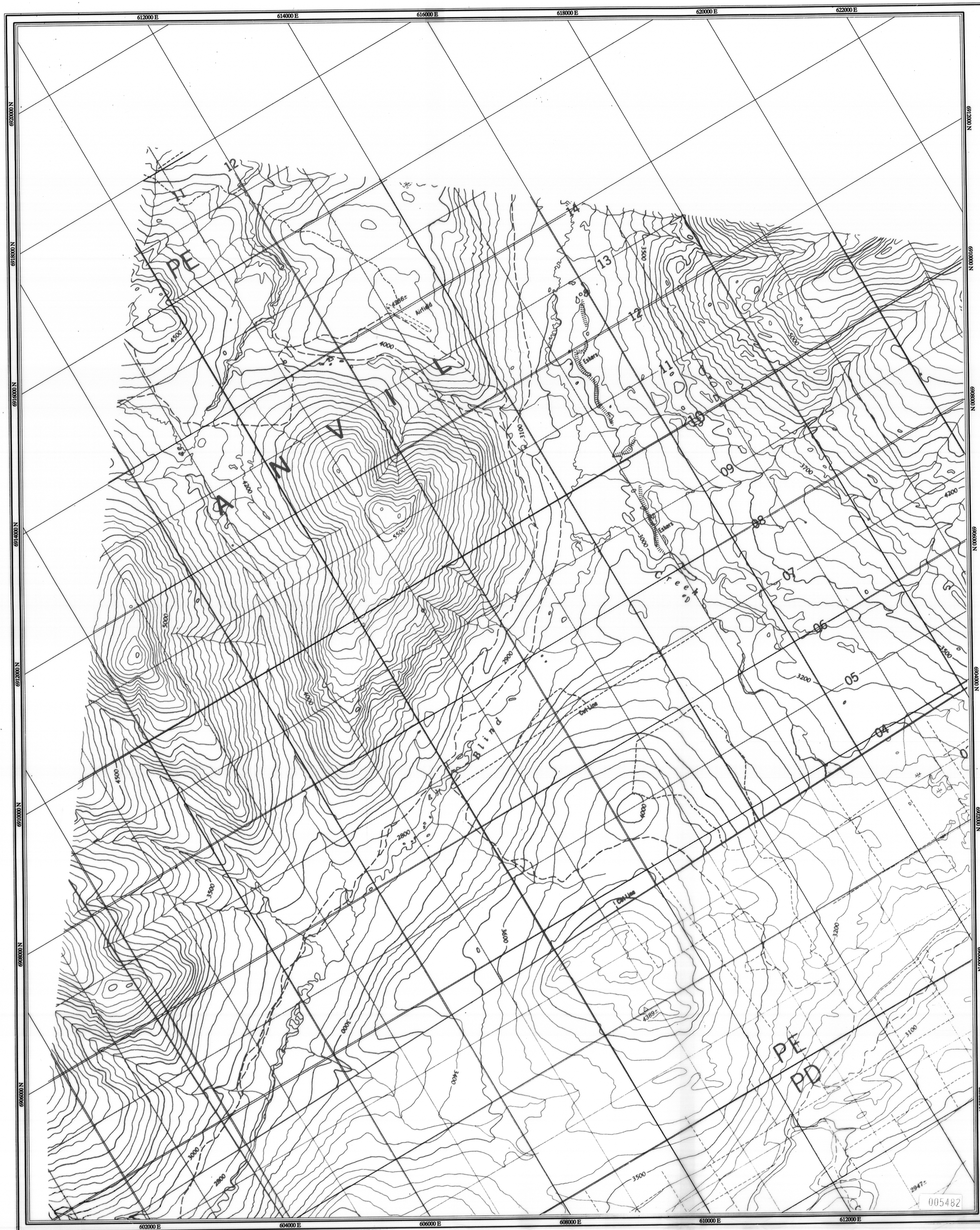
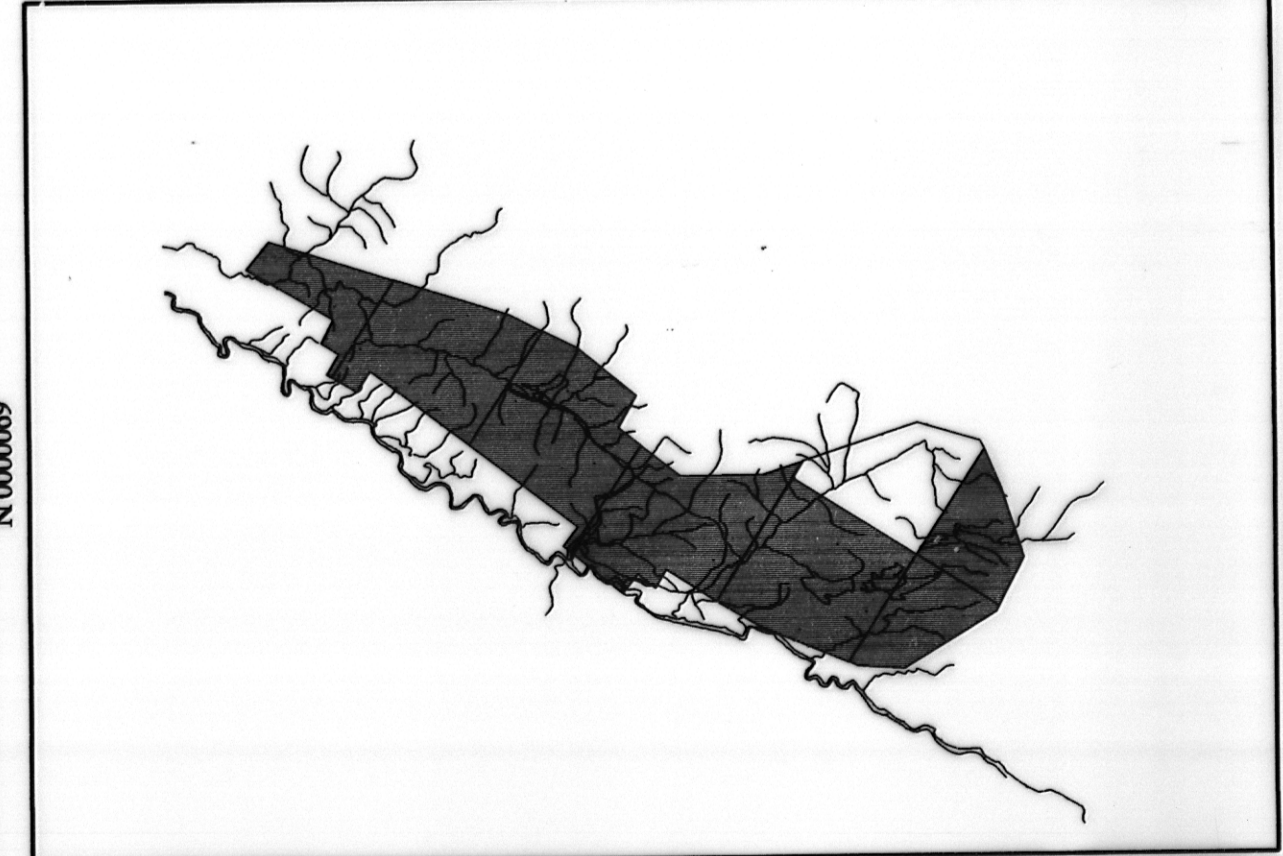
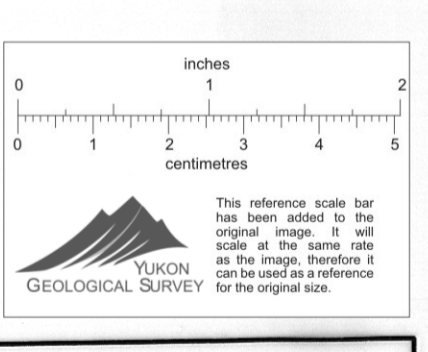


Faro Aerodot 06/96
105/k/2.6.7
Scale 1:24000
Base Topography

G15
1-1



Square: Grid North
Bar: True North
Arrow: Magnetic North
Angles presented are approximate mean
deviations for centre of NTS sheet.
Use diagram for reference only.
Grid North - True North: 1.52"
Grid North - Magnetic North: 30.35"
Annual change decreasing 4.1"



ANVIL RANGE MINING CORPORATION
BASE TOPOGRAPHIC MAP
FARO, G5
YUKON

SCALE 1:24 000

Date Flown: JUNE-JULY 1996
NTS: 105/K/2.6.7
Project: J9650 Map Ref: 1-1

