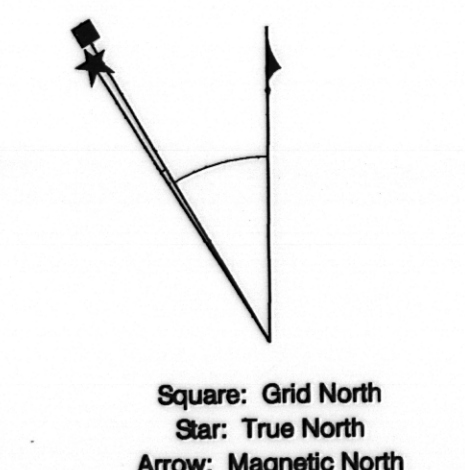
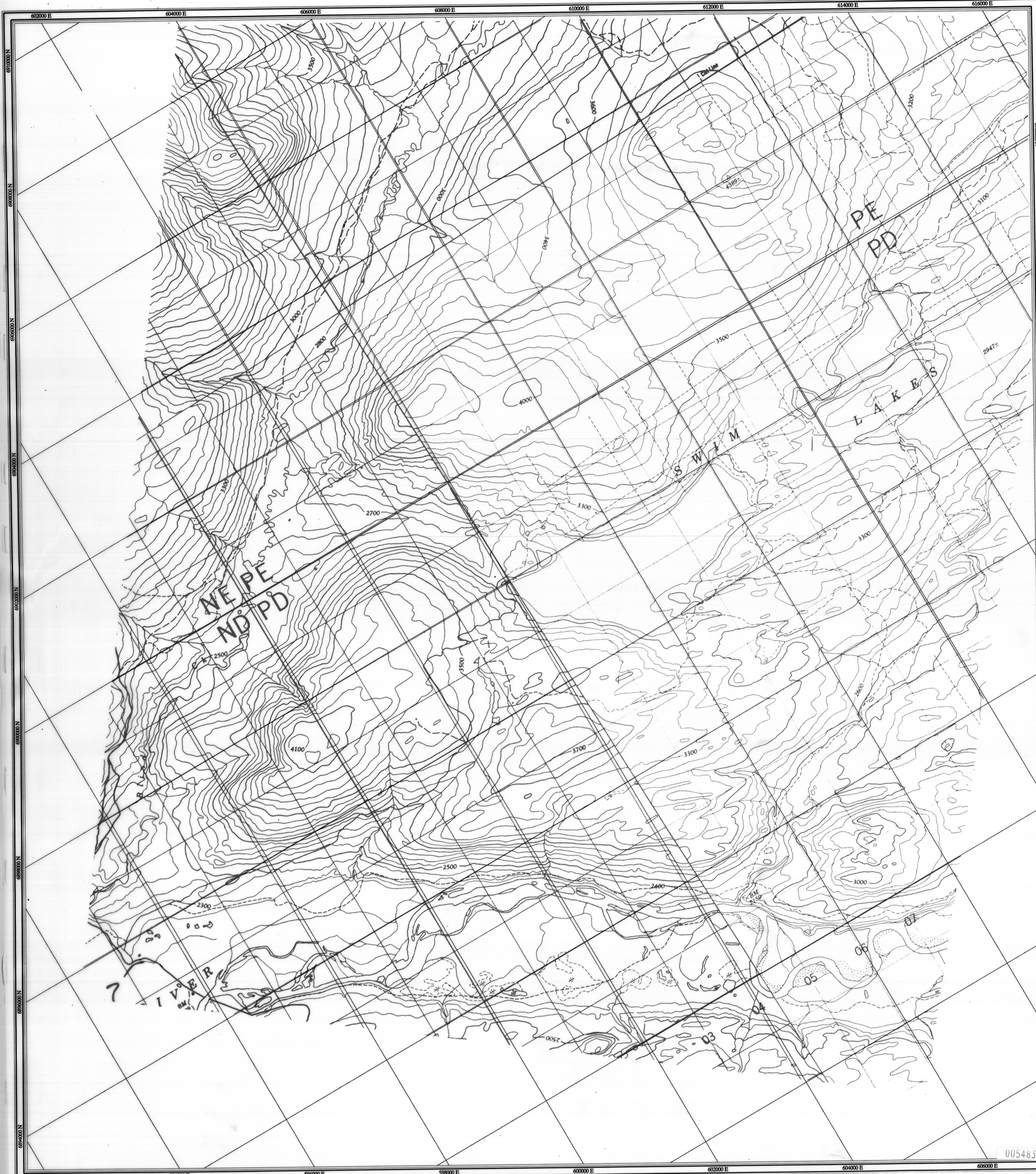
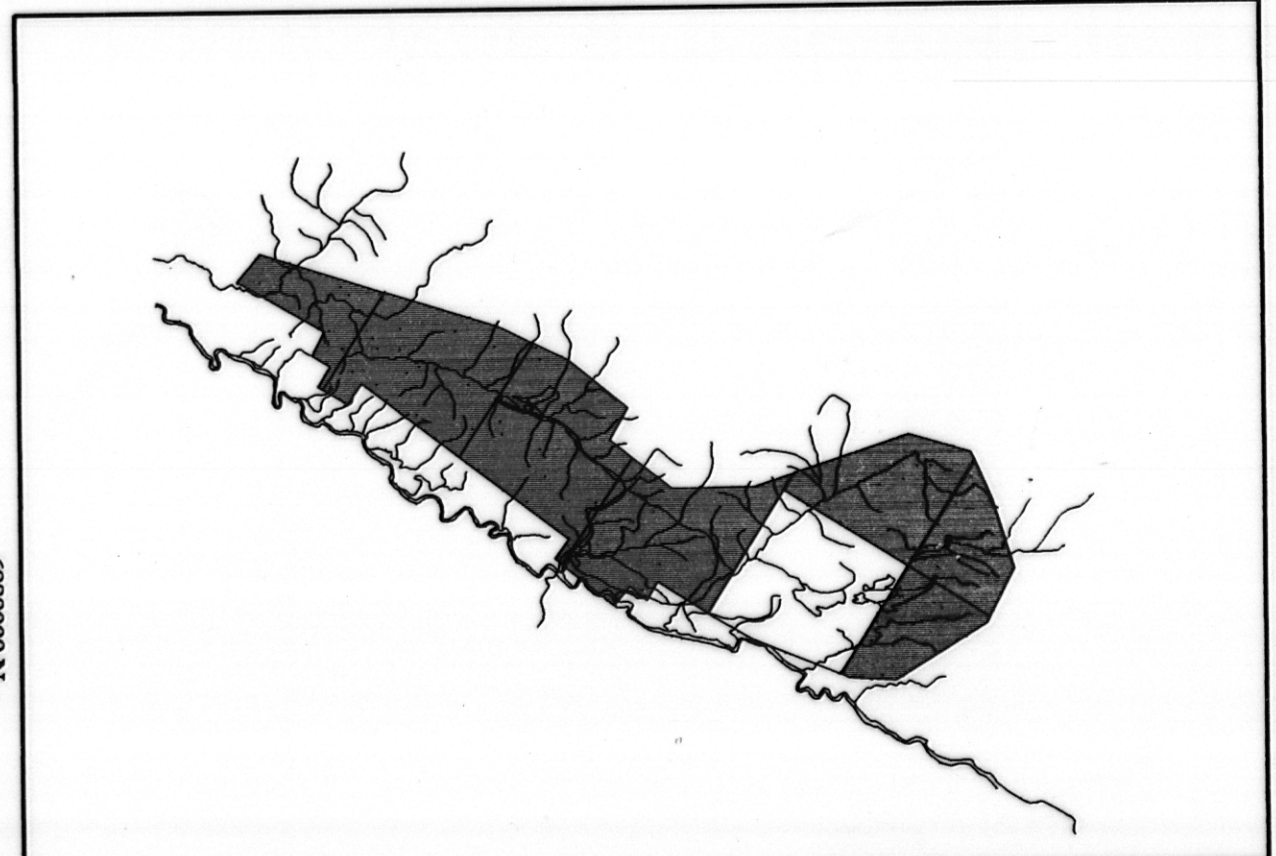
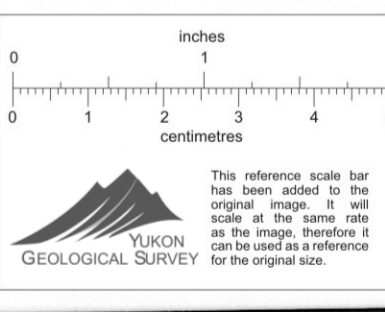


Faro Aerodat 06/16  
105/K/2,3,6,7  
Scale 1:24,000  
Base Topography

G16  
1-1



Square: Grid North  
Star: True North  
Arrow: Magnetic North  
Angles presented are approximate mean deviations for centre of NTS sheet. Use diagram for reference only.  
Grid North - True North : 1.50°  
Grid North - Magnetic North : 30.35°  
Annual change decreasing 4.1"

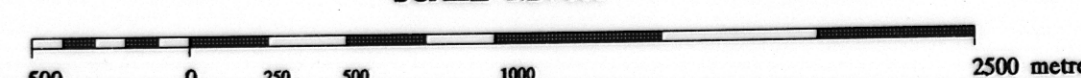


ANVIL RANGE MINING CORPORATION

BASE TOPOGRAPHIC MAP

FARO, G6  
YUKON

SCALE 1:24 000



Date Flown : JUNE - JULY 1996  
NTS : 105/K/2,3,6,7  
Project : J9650 Map Ref : 1 - 1

005483