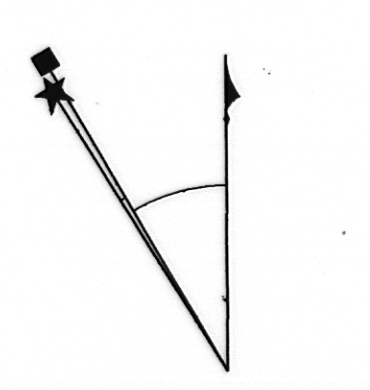
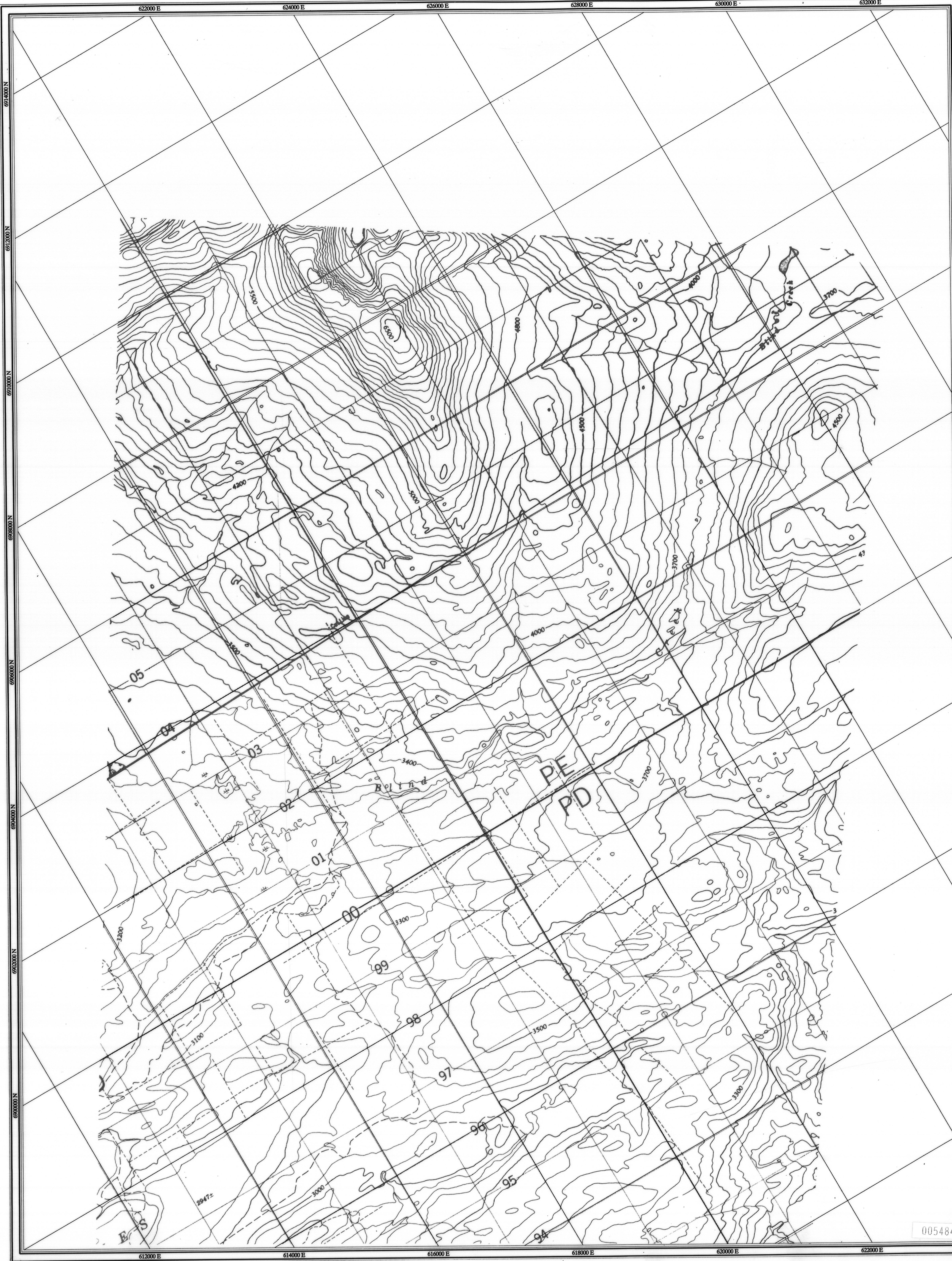
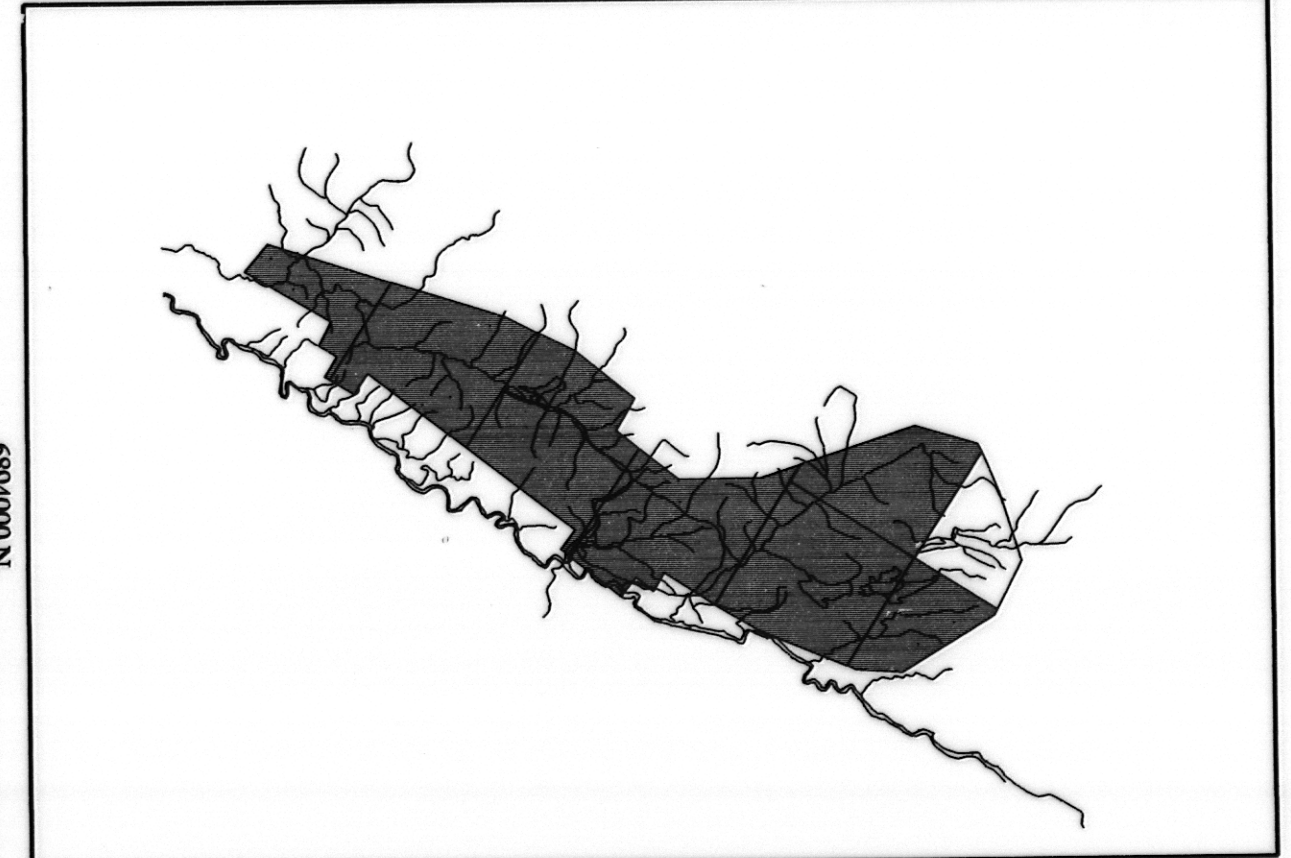
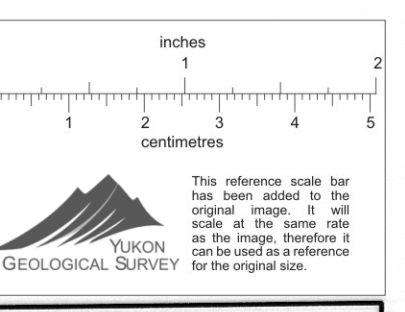


06/96
 Faro Aerodat
 105/K/2
 Scale 1:24,000
 Base Topography

H6
 1-1



Square: Grid North
 Star: True North
 Arrow: Magnetic North
 Angles presented are approximate mean deviations for centre of NTS sheet. Use diagram for reference only.
 Grid North - True North : 1.59"
 Grid North - Magnetic North : 30.35"
 Annual change decreasing 4.1"

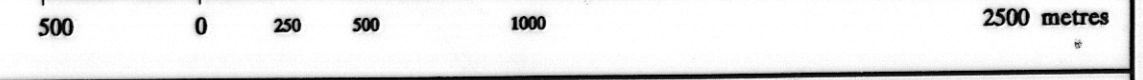


ANVIL RANGE MINING CORPORATION

BASE TOPOGRAPHIC MAP

FARO, H5
 YUKON

SCALE 1:24 000



Date Flown : JUNE - JULY 1996
 NTS : 105/K/2,7
 Project : J9650 Map Ref : 1 - 1

005484