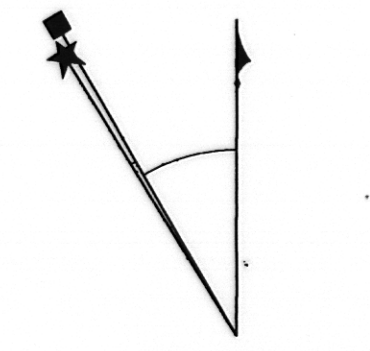
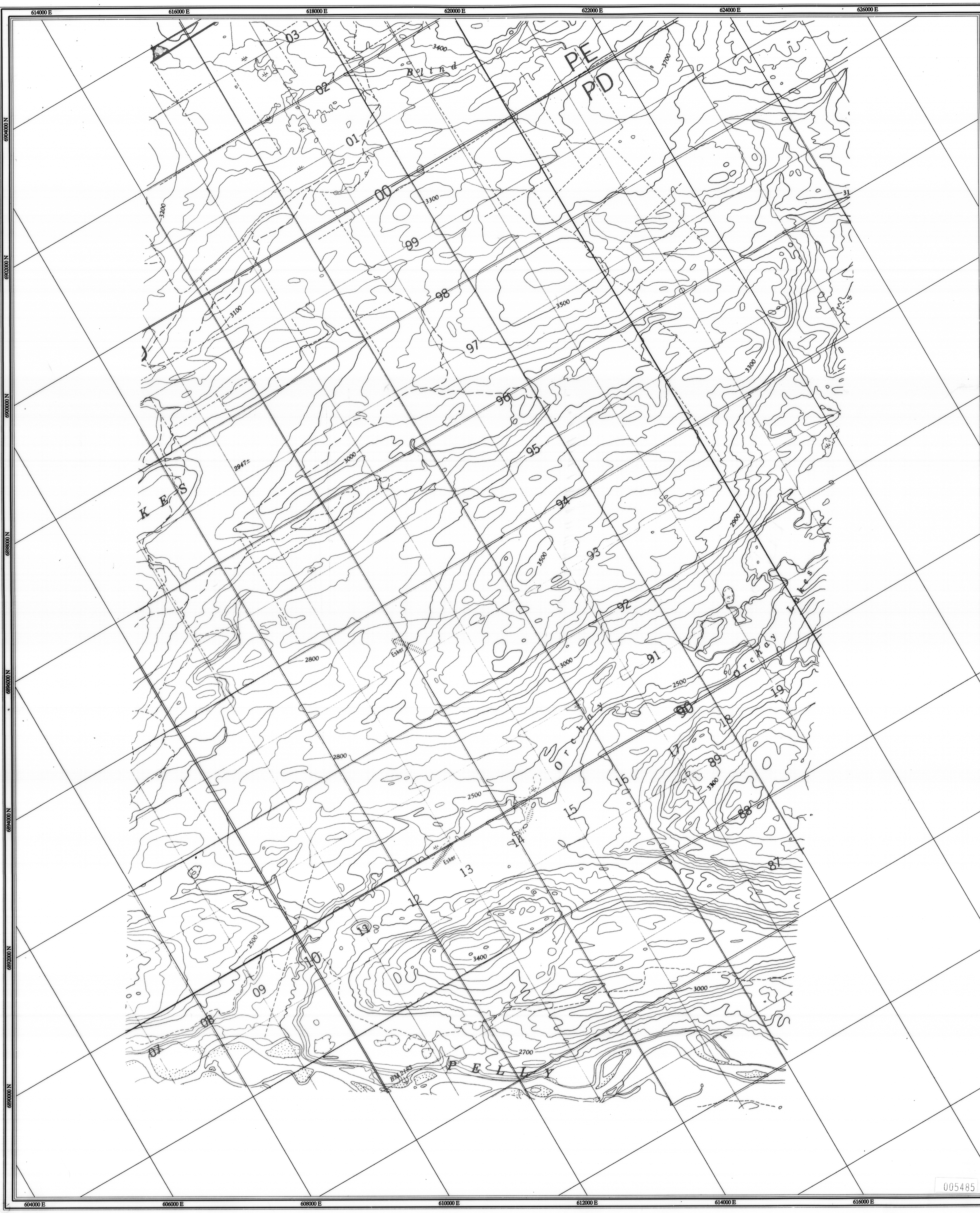
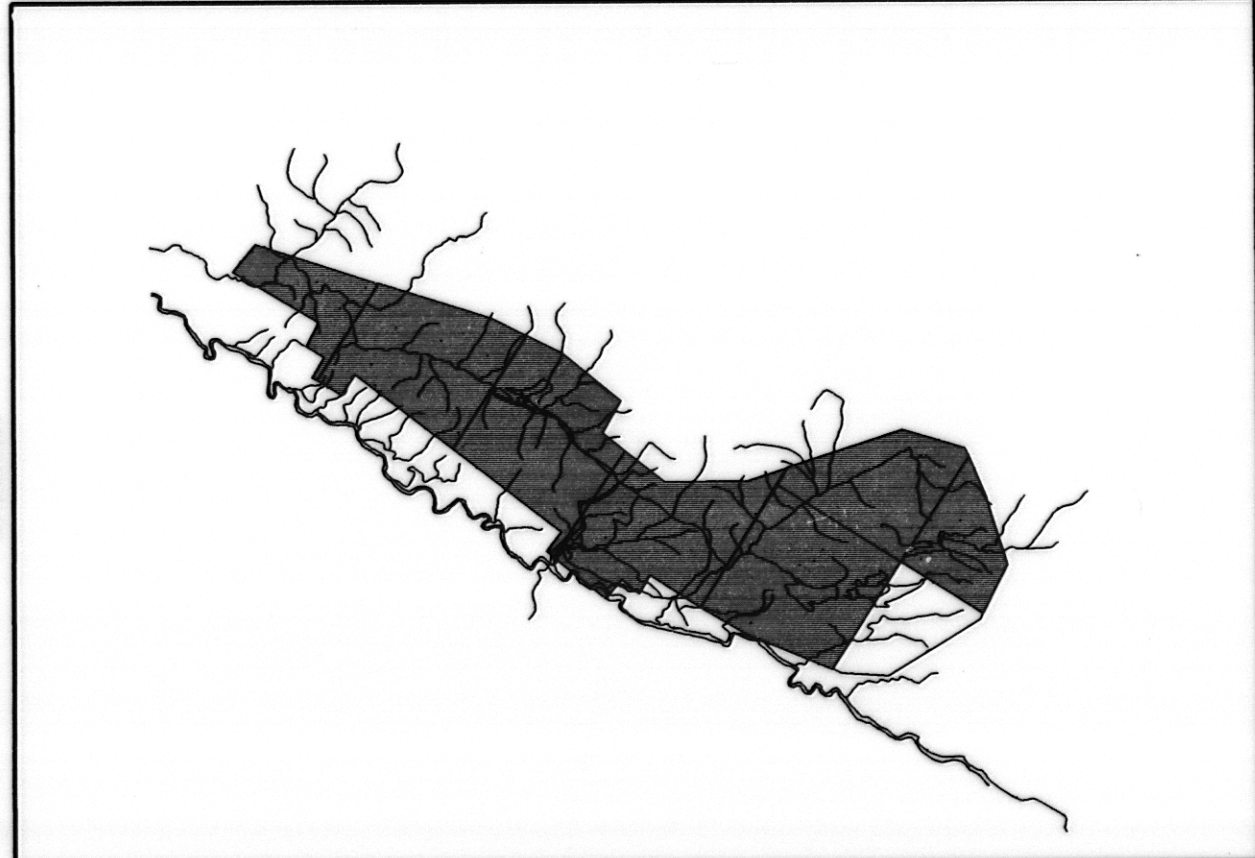
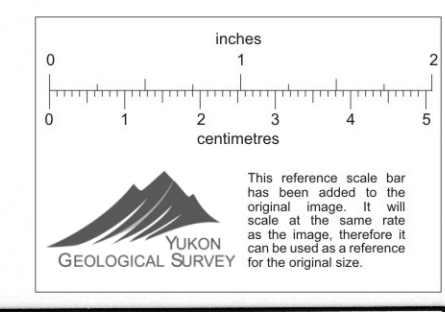


Foro Aerodat 06/96
105/K/2.7
Scale 1:24,000
Base Topography

H5
1-1



Square: Grid North
Star: True North
Arrow: Magnetic North
Angles presented are approximate mean
deviations for centre of NTS sheet.
Use diagram for reference only.
Grid North - True North : 1.50"
Grid North - Magnetic North : 30.35"
Annual change decreasing 4.1"

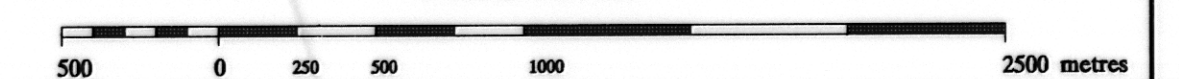


ANVIL RANGE MINING CORPORATION

BASE TOPOGRAPHIC MAP

FARO, H6
YUKON

SCALE 1:24 000



Date Flown : JUNE - JULY 1996

NTS : 105/K/2

Project : J9650 Map Ref : 1 - 1

005485