

TITAN PROJECT

KPO no. 1 Soil Sampling Grid

005641

Reasons for Present Investigations:

The Silver King Quartzite, the host formation of the rich Silver King Mine, is suspected to pass under the southwest corner of KPO no. 1. A resistivity survey in 1959 revealed a series of strong resistivity lows trending N28°E. It is this series of lows, thought to be the same vein fault system proved by drilling to the northeast of Area "A", that changes suddenly to a resistivity high where this system is predicted to intersect the Hector-Calumet Quartzite. Interest in this corner of the KPO no. 1 claim is heightened by the apparent right-hand displacement of the vein fault system by a northwest cross-fault (see both the accompanying map and Silver Titan's "Compilation of Exploration to Date").

Results:

Corrections have been applied to these results in order to remove the effect of organic matter in the soil samples upon the readings produced on the scale of the mercury detector. Without these corrections the mercury profiles are very misleading and can easily result in serious misinterpretation of their significance.

The appearance of marked peaks at 8 + 50 south on line 16 and at 10 + 00 south on line 20 is very significant because of their location close to the strong anomalous geophysical trend in the vicinity of the projected position of the Silver King Quartzite. The peak on line 20 seems to be a strike extension of the series of lows to the northeast, and may rule out the suspected cross-faulting of this structure or reduce the apparent displacement to a minimal amount.

Conclusions and Recommendations:

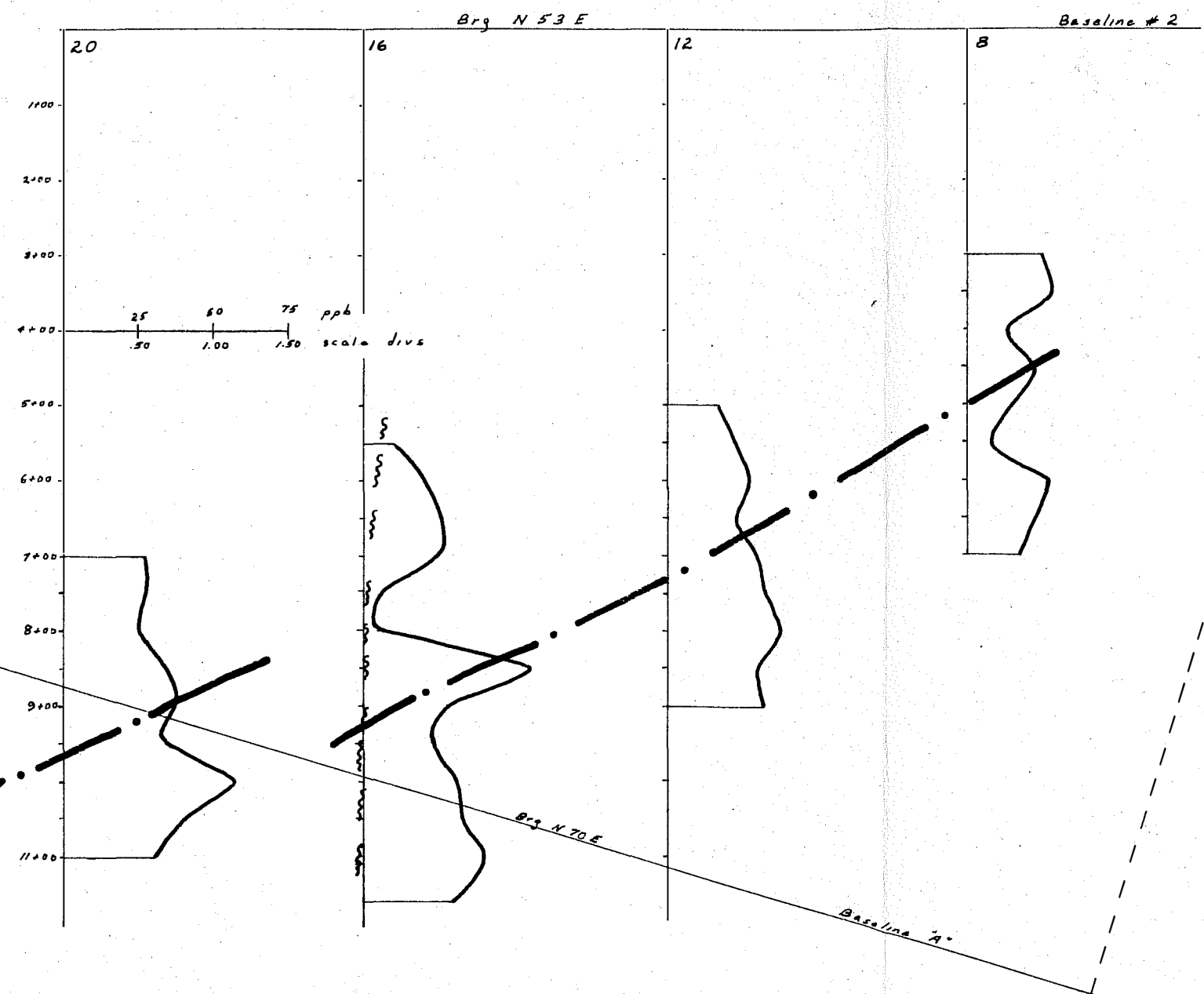
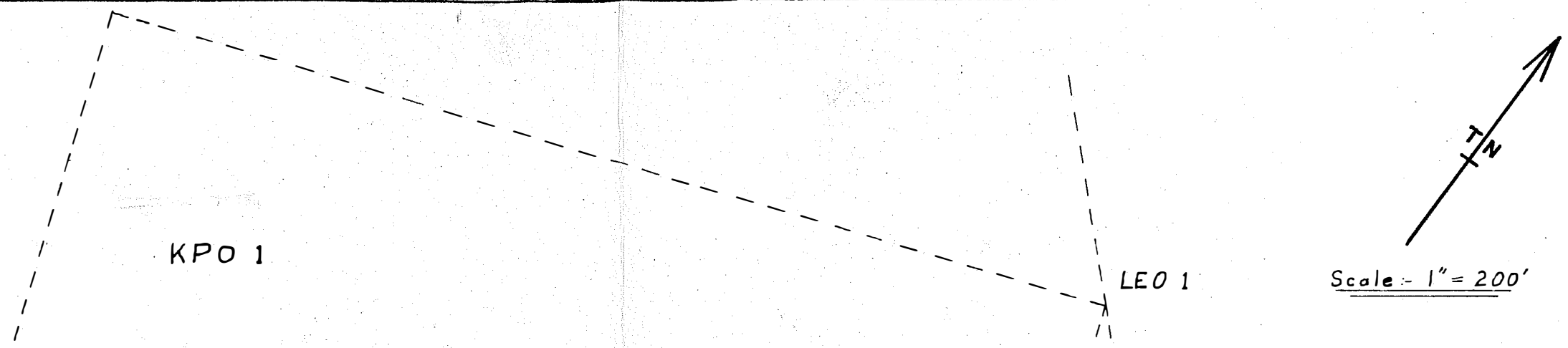
The existence of a source of mercury vapours under the overburden in this corner of the KPO no. 1 claim may have considerable economic significance. Follow-up soil sampling on a more detailed scale is indicated.

It is recommended that lines 19, 18, and 17 be cut and then sampled at 25-foot intervals over a line length of 200 feet, thus straddling the possible zone of interest between 16/8 + 50 and 20/10 + 00.

Typed, Vancouver Office
October 11, 1963 /ja

9th October, 1963
David L. Seymour.

Distribution: Noranda Exploration Co. Ltd.
Homestake Mining Company
Kerr-Addison Gold Mines Ltd.
Silver Titan Mines Limited
Canex Aerial Exploration Ltd.
D. L. Seymour
E. A. Scholz
J. D. Little
L. Adie
File.



Legend

Claim Boundary

Resistivity low trend

Hg Profile

Fault (from Resistivity)

SILVER TITAN PROJECT
MAYO, YUKON

KPO 1
 SOIL SAMPLE GRID
 LOCATION
 and
 MERCURY DETECTOR PROFILES

Sampled by	T.S. & H.B.
Analyzed by	D.L.S.
Compiled by	D.L.S. & M.O.H.
Drafted by	M.O.H.
Date	October 7, 1963