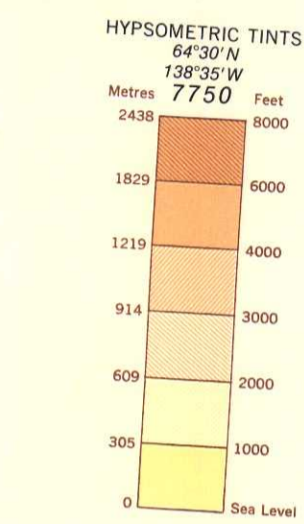


KLONDIKE  
ELEVATIONS IN FEET

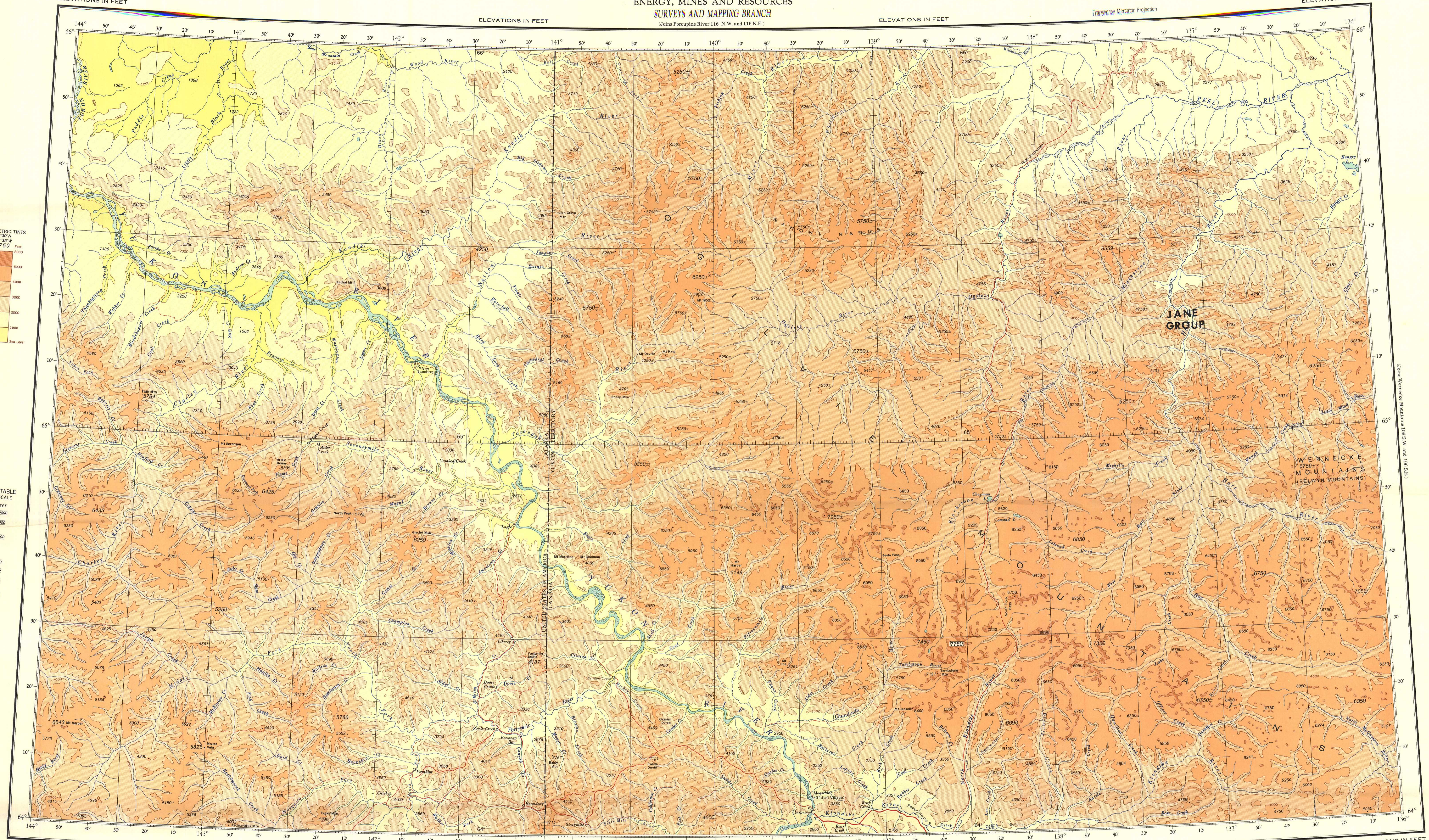
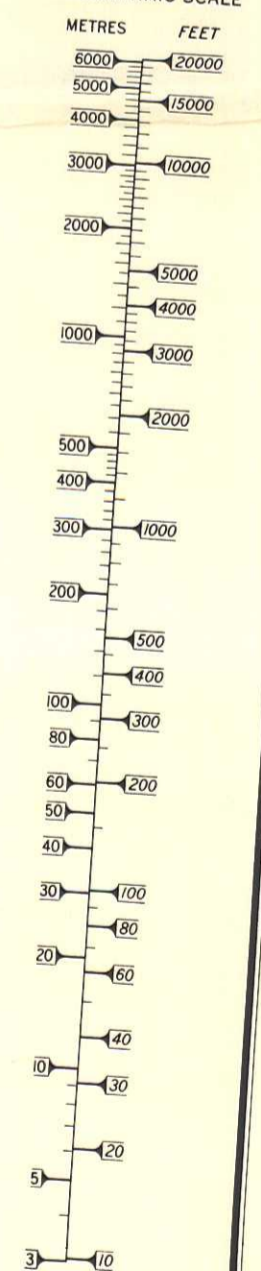
CANADA  
DEPARTMENT OF  
ENERGY, MINES AND RESOURCES  
SURVEYS AND MAPPING BRANCH  
(Joins Porcupine River 116 N.W. and 116 N.E.)

Transverse Mercator Projection

ELEVATIONS IN FEET



CONVERSION TABLE  
LOGARITHMIC SCALE



ELEVATIONS IN FEET  
Revised Map, 4th Edition, 1972  
© Canada Copyright reserved 1972

Prepared by the Surveys and Mapping Branch,  
Department of Energy, Mines and Resources.

ELEVATIONS IN FEET

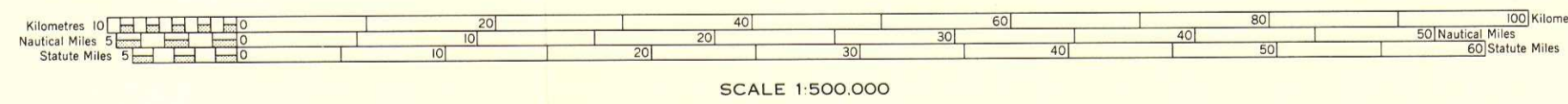
(Joins Fort Selkirk 116 N.W. and 116 N.E.)

ELEVATIONS IN FEET

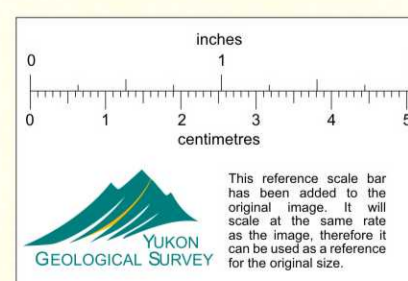
ELEVATIONS IN FEET

KLONDIKE

N.T.S. No. 116 S.W. and 116 S.E.



SCALE 1:500,000



This reference scale has been added to the original map. It will aid in the study, but it is not to be used as a reference for the original size.

Copies may be obtained from the Map Distribution Office,  
Department of Energy, Mines and Resources, Ottawa.

005710