

**CURRAGH RESOURCES INC.
DY DEPOSIT
EXPLORATION SHAFT ACCESS
DRAWINGS
APRIL 1989**

005763

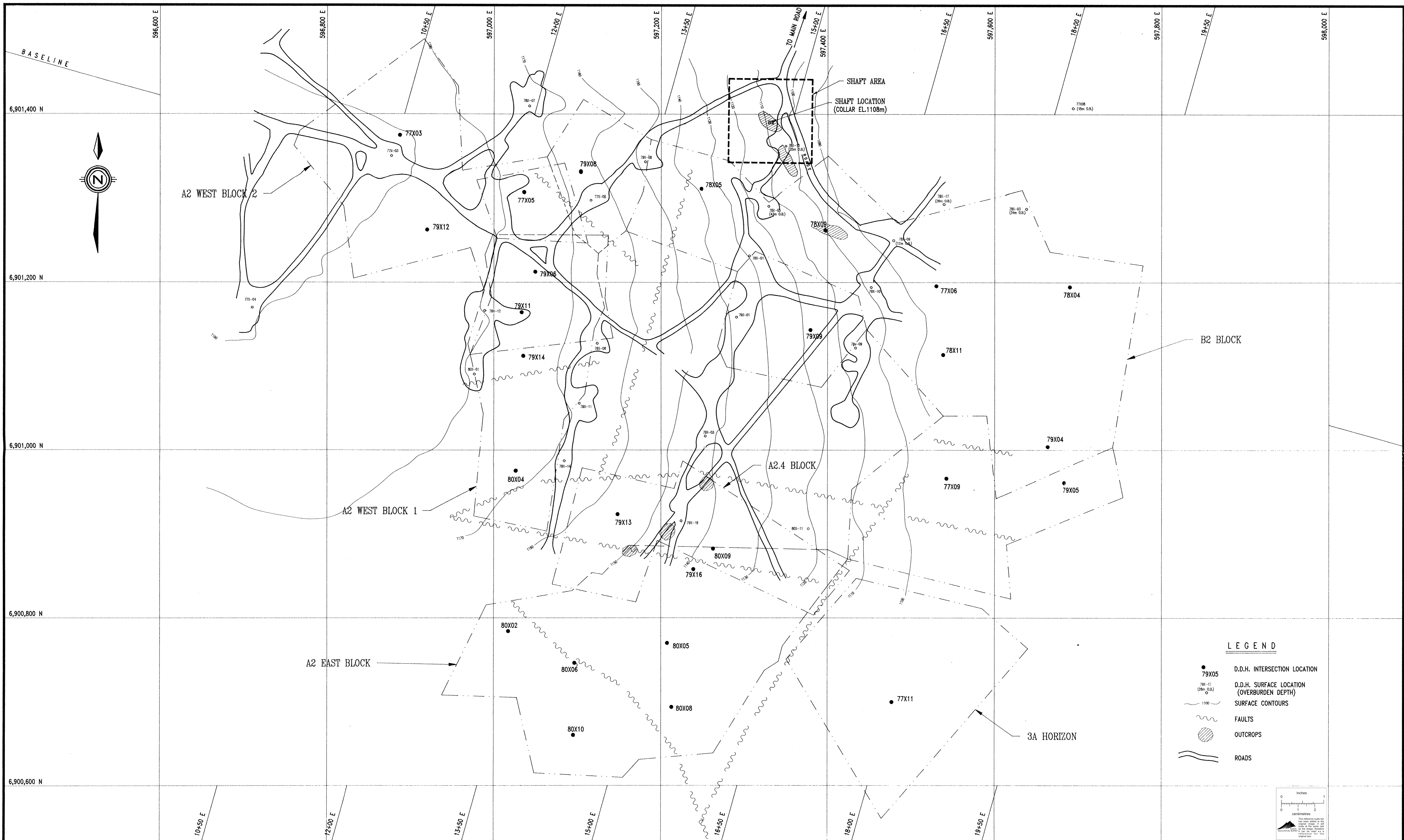
**CANADIAN
MINE
DEVELOPMENT**

**ENGINEERS
CONTRACTORS
SERVING THE MINING INDUSTRY**

**CURRAGH RESOURCES INC.
DY DEPOSIT**

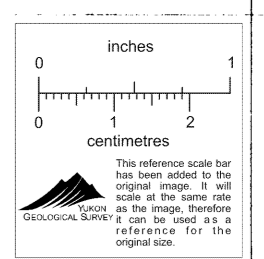
LIST OF DRAWINGS

SURFACE LOCATION PLAN	89-06-001
SHAFT PLAN & SECTION	89-06-002
EXPLORATION PHASE - SHAFT LONGITUDINAL	89-06-003
EXPLORATION PHASE - G/A OF SHAFT LOADING AREA	89-06-004
U/G EXPLORATION PLAN	89-06-005
ORE RESERVE PLAN	89-06-006
DEVELOPMENT PHASE - G/A OF SHAFT LOADING AREA	89-06-007
DEVELOPMENT PHASE - SHAFT LONGITUDINAL	89-06-008
TYPICAL MINING PLAN	89-06-010
TYPICAL MINING SECTION	89-06-011
SECTION 12+00E	89-06-012
SECTION 13+50E	89-06-013
SECTION 15+00E	89-06-014
SECTION 16+50E	89-06-015
SECTION 18+00E	89-06-016
SECTION 19+50E	89-06-017
SHAFT TIMBER DETAILS	89-06-018



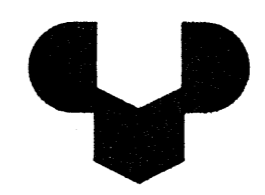
LEGEND

- 79X05 D.D.H. INTERSECTION LOCATION
- 79-17 (26m O.B.) D.D.H. SURFACE LOCATION (OVERBURDEN DEPTH)
- 1100 — SURFACE CONTOURS
- ~~~~~ FAULTS
- ▨ OUTCROPS
- == ROADS



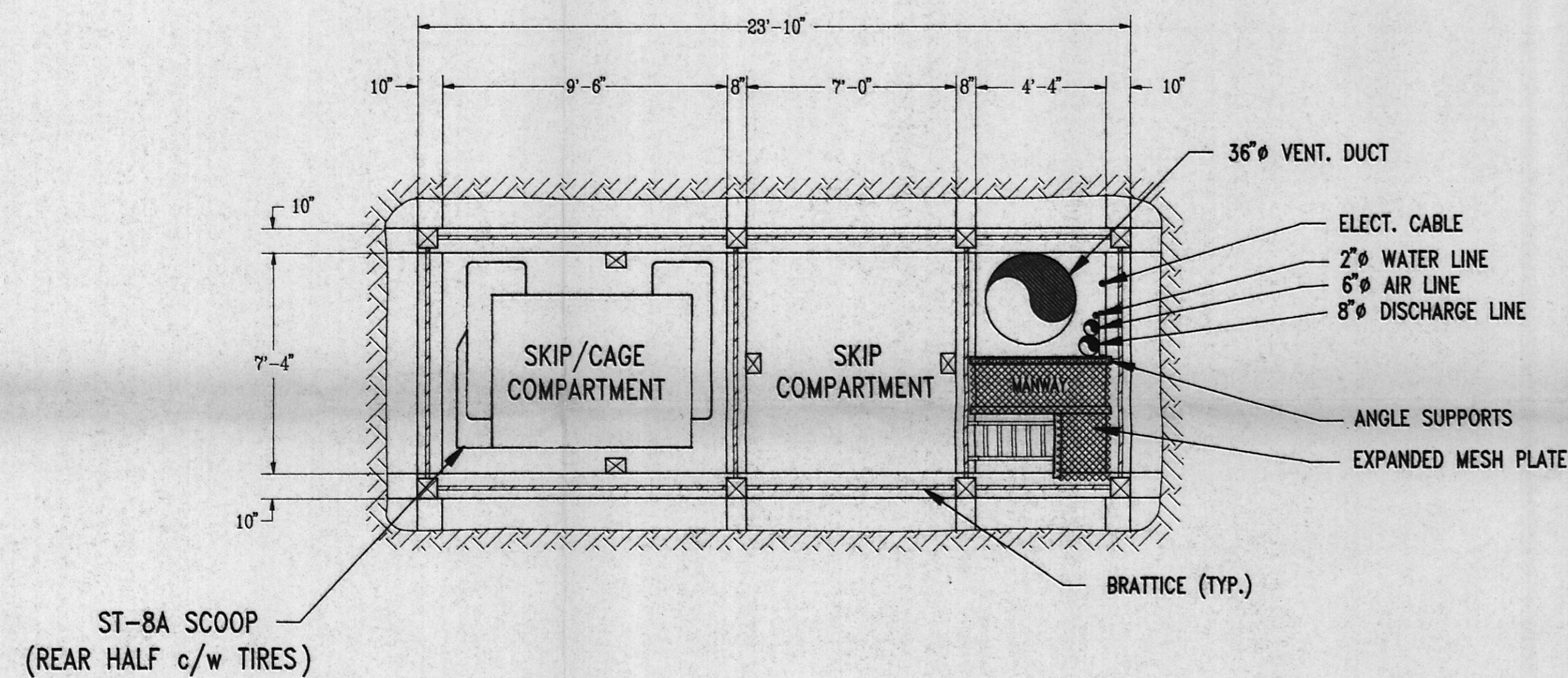
DWG. NO.	REFERENCE DRAWING	DWG. NO.	REFERENCE DRAWING	NO.	DESCRIPTION OF REVISION	DATE	BY	NO.	DESCRIPTION OF REVISION	DATE	NO.	APPROVED:

SCALE: 1:2000
 DATE: 02/89
 DESIGNED:
 DRAWN: S.McG.
 CHECKED:
 APPROVED:

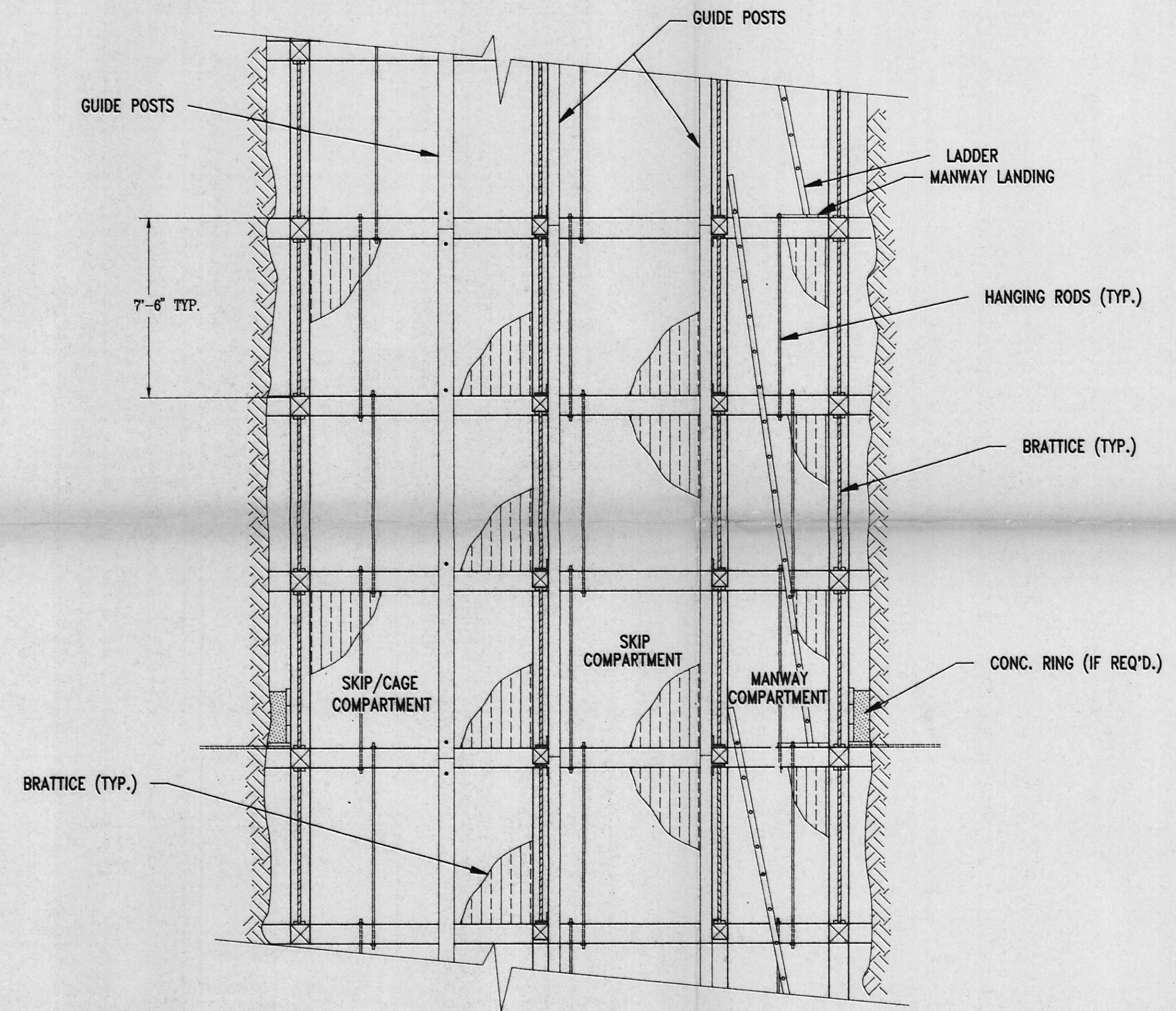


CURRAGH RESOURCES CORP.
 DY DEPOSIT
 SURFACE LOCATION PLAN

CANADIAN MINE DEVELOPMENT
 BRAMPTON, ONTARIO CANADA
 DWG. NO. 89-06-001
 REV.

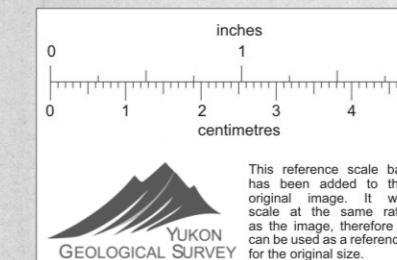


SHAFT PLAN



SHAFT SECTION

3 COMPARTMENT SHAFT - 2.29m (7.5') SET CENTERS
 MANWAY LANDINGS @ 3 SET INTERVALS
 TIMBER END & WALL PLATES - 250mm X 250mm (10" X 10")
 TIMBER DIVIDERS - 250mm X 200mm (10" X 8")
 TIMBER POSTS - 200mm X 200mm (8" X 8")
 COMPARTMENTS - FULL TIGHT LINING
 6 HANGING RODS/SET
 BEARING SETS @ 90m INTERVALS
 ROCK CATCHERS @ 6 SET INTERVALS
 WATER RINGS ABOVE EACH LEVEL & AS REQ'D.
 GUIDES - 6" X 8" NOMINAL X 22'-6" LG.
 GUIDES - DOUGLAS FIR SELECT (189B)
 SETS - BC FIR NO.1 STRUCTURAL



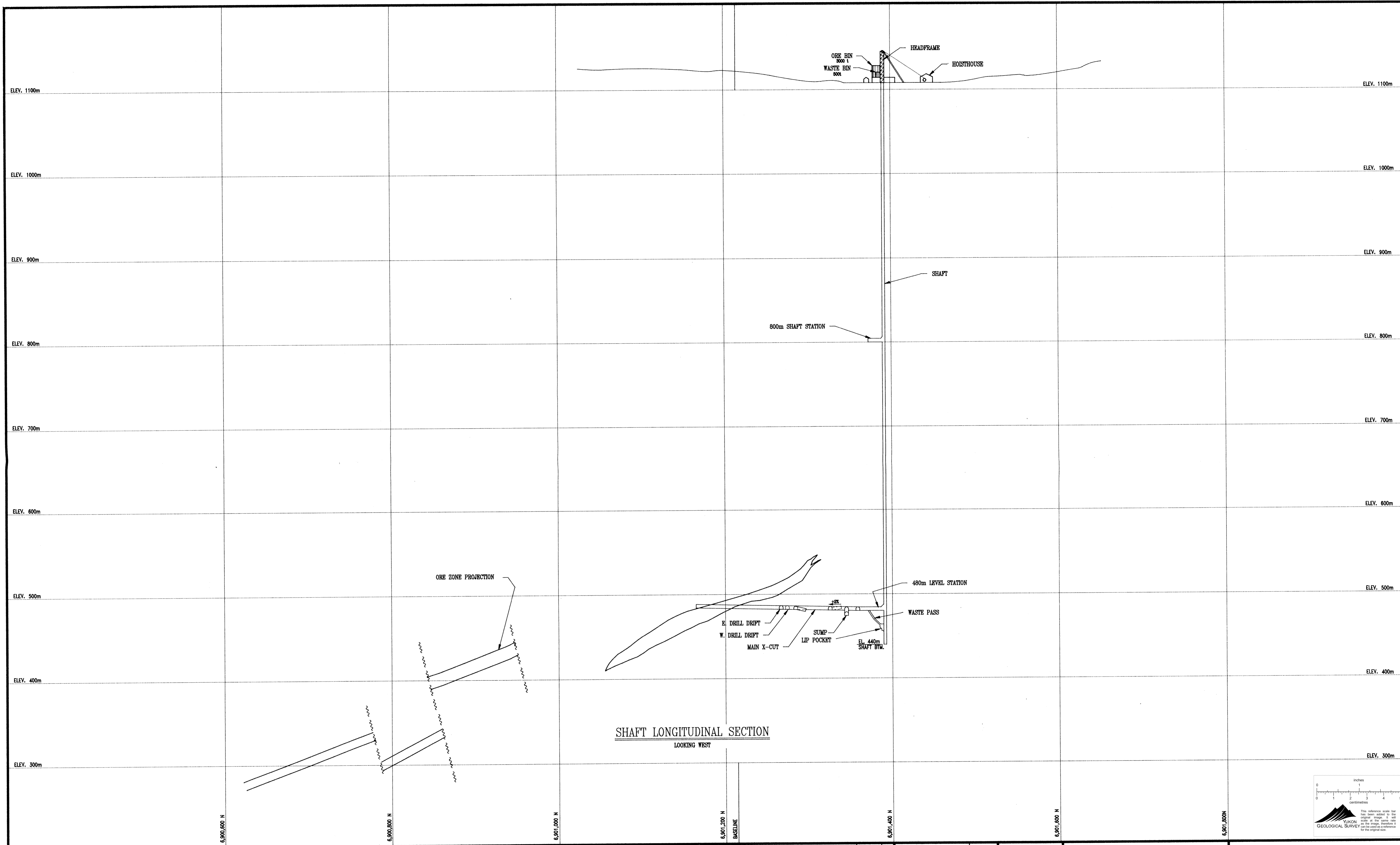
DWG. NO.	REFERENCE DRAWING	DWG. NO.	REFERENCE DRAWING	NO.	DESCRIPTION OF REVISION	DATE	BY	NO.	DESCRIPTION OF REVISION	DATE	NO.	APPROVED:

SCALE: 1/4" = 1'-0"	DATE
DESIGNED: J.M.P.	
DRAWN: S.McG.	03/89
CHECKED:	
APPROVED:	

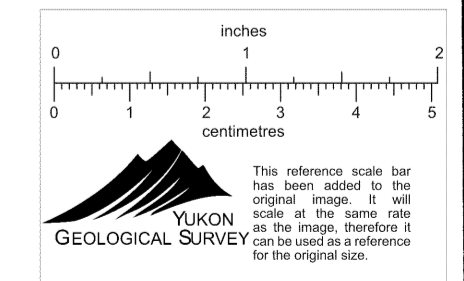


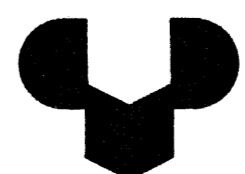
CURRAGH RESOURCES CORP.
 DY DEPOSIT
 SHAFT - PLAN & SECTION

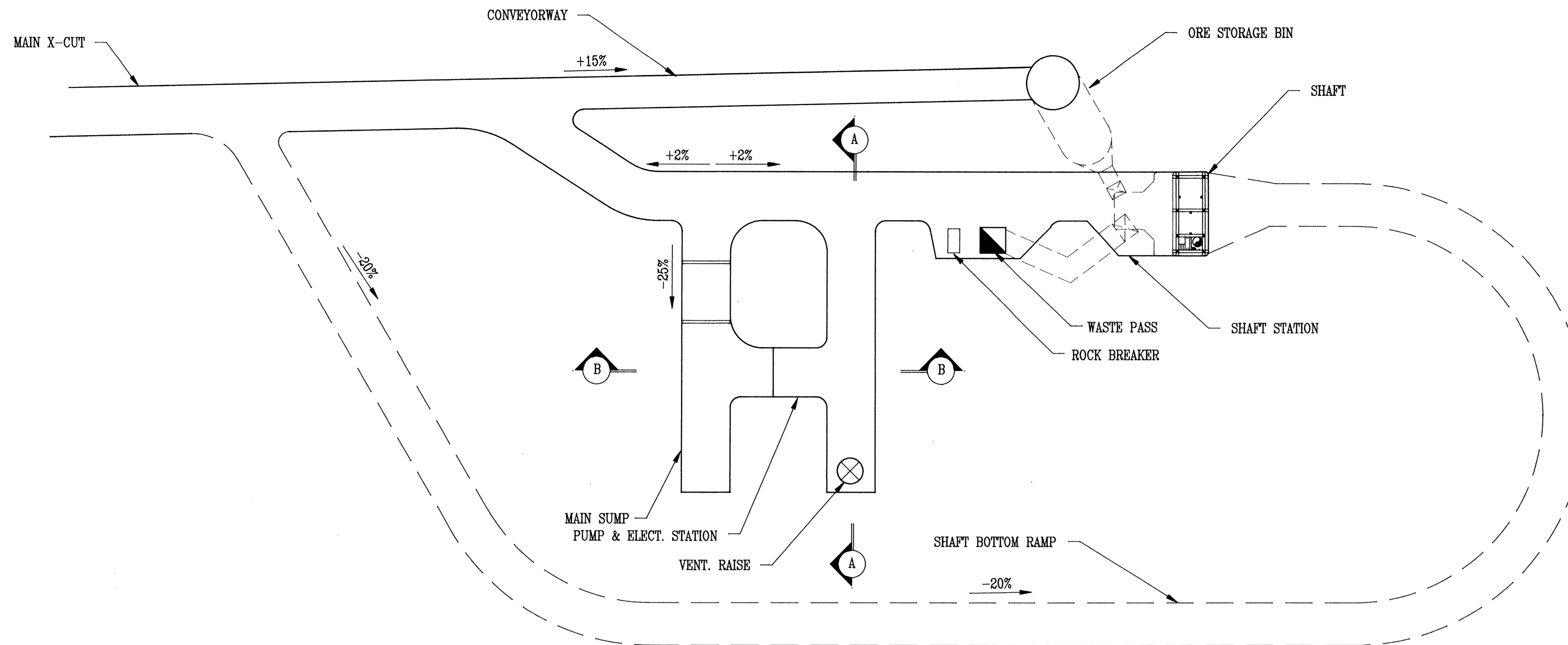
CANADIAN MINE DEVELOPMENT
 BRAMPTON, ONTARIO CANADA
 DWG. NO. 89-06-002 REV.



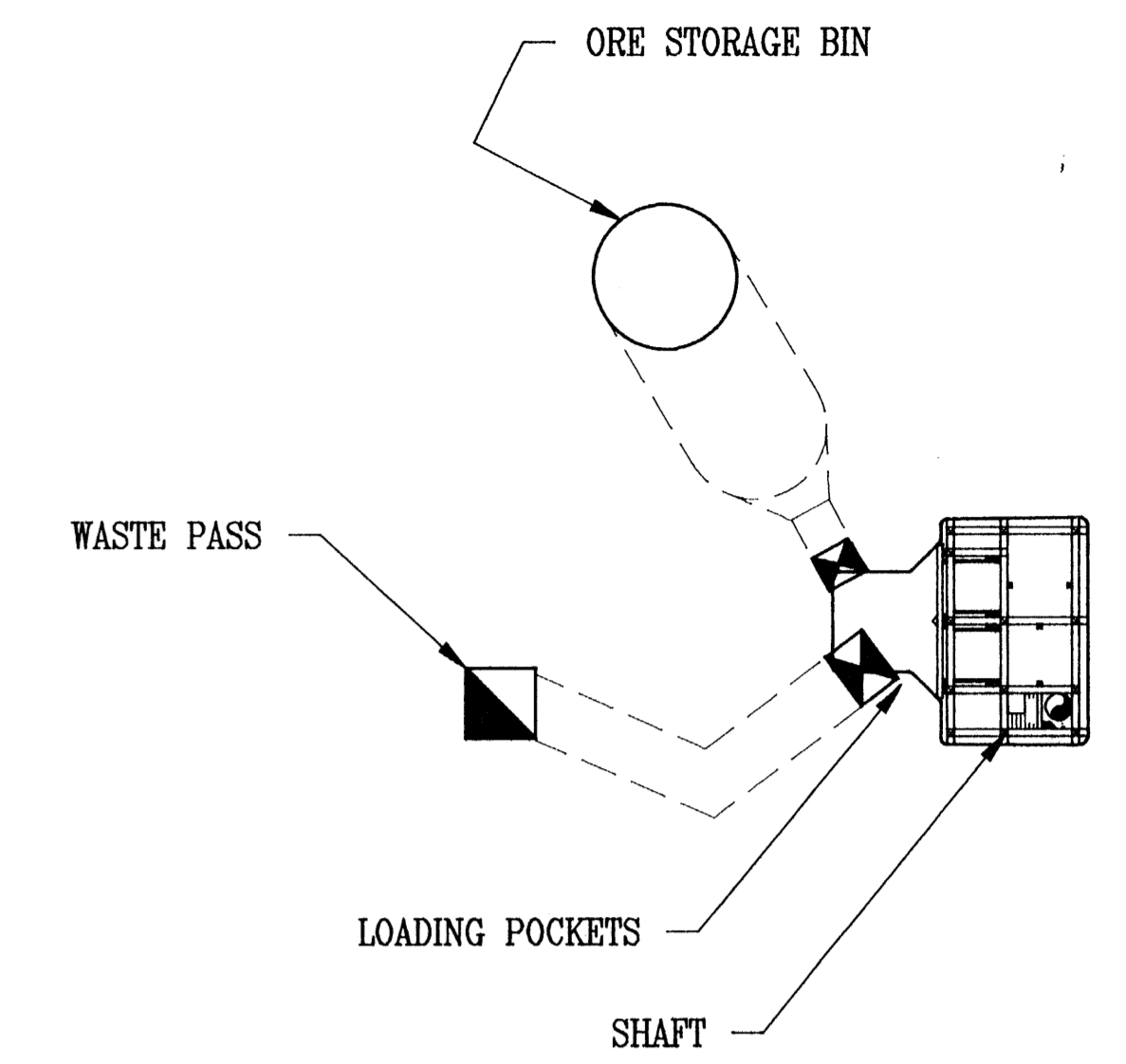
SHAFT LONGITUDINAL SECTION
LOOKING WEST



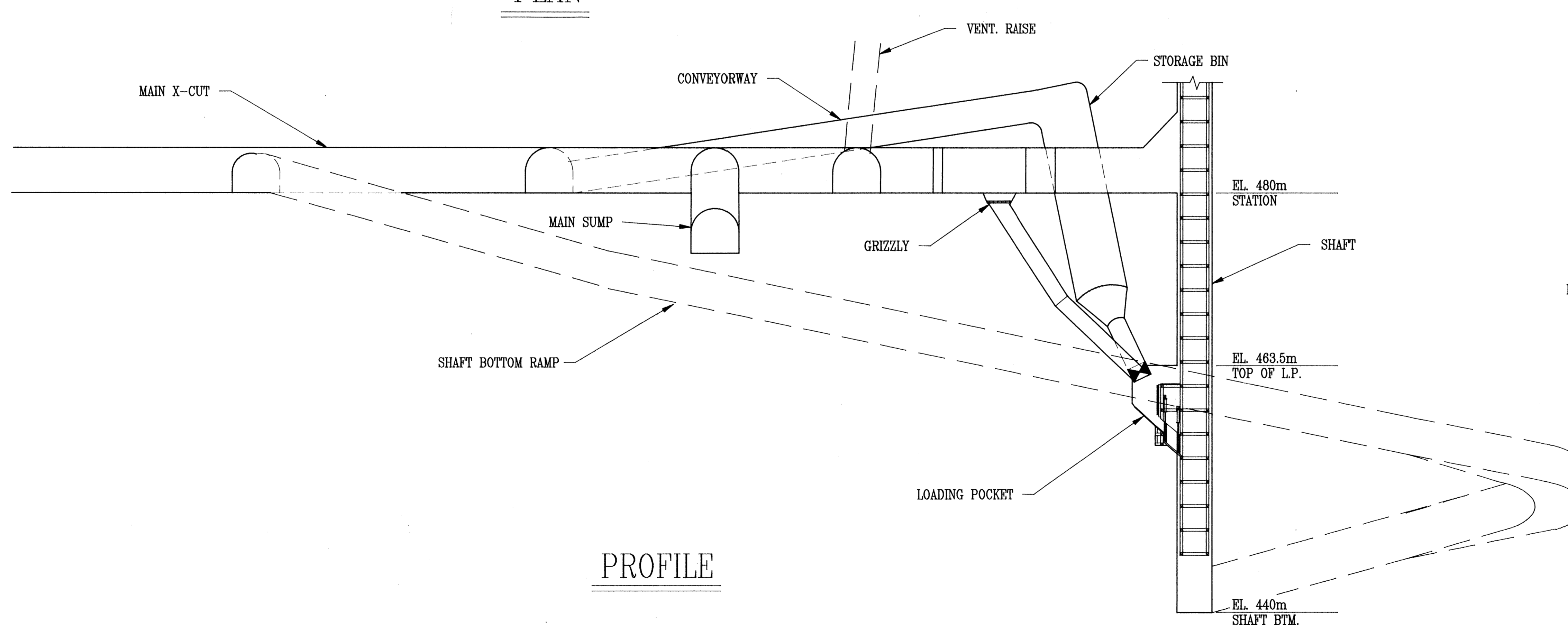
DWG. NO.	REFERENCE DRAWING	DWG. NO.	REFERENCE DRAWING	NO.	DESCRIPTION OF REVISION	DATE	BY	NO.	DESCRIPTION OF REVISION	DATE	NO.	APPROVED: <i>[Signature]</i>	SCALE: 1:2000 DESIGNED: DRAWN: S.McG. CHECKED: DATE: 02/89	 CURRAGH RESOURCES CORP. DY DEPOSIT EXPLORATION PHASE SHAFT LONGITUDINAL SECTION LOOKING WEST	CANADIAN MINE DEVELOPMENT BRAMPTON, ONTARIO CANADA DWG. NO. 89-06-003 REV.
----------	-------------------	----------	-------------------	-----	-------------------------	------	----	-----	-------------------------	------	-----	------------------------------	--	--	---



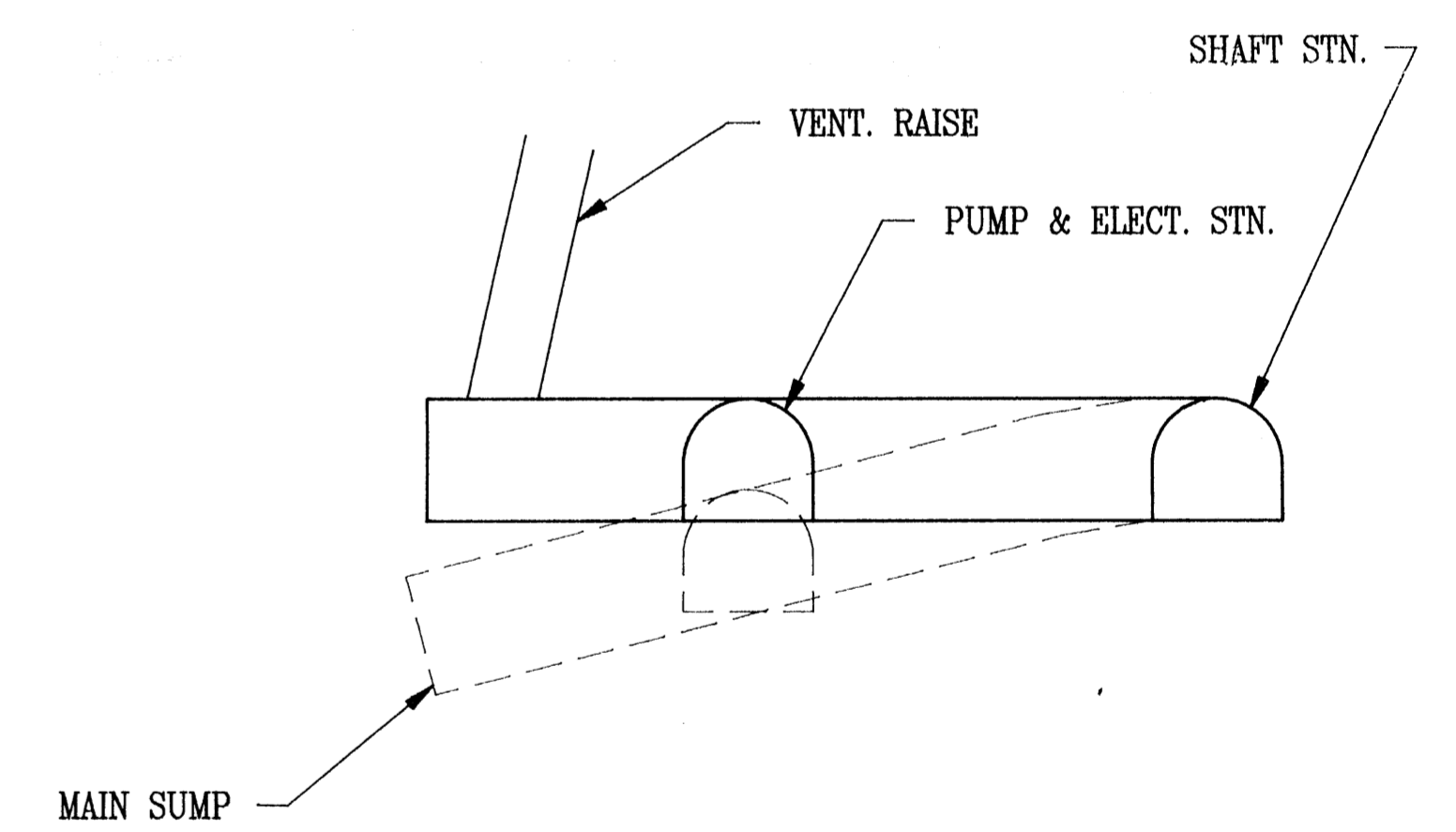
PLAN



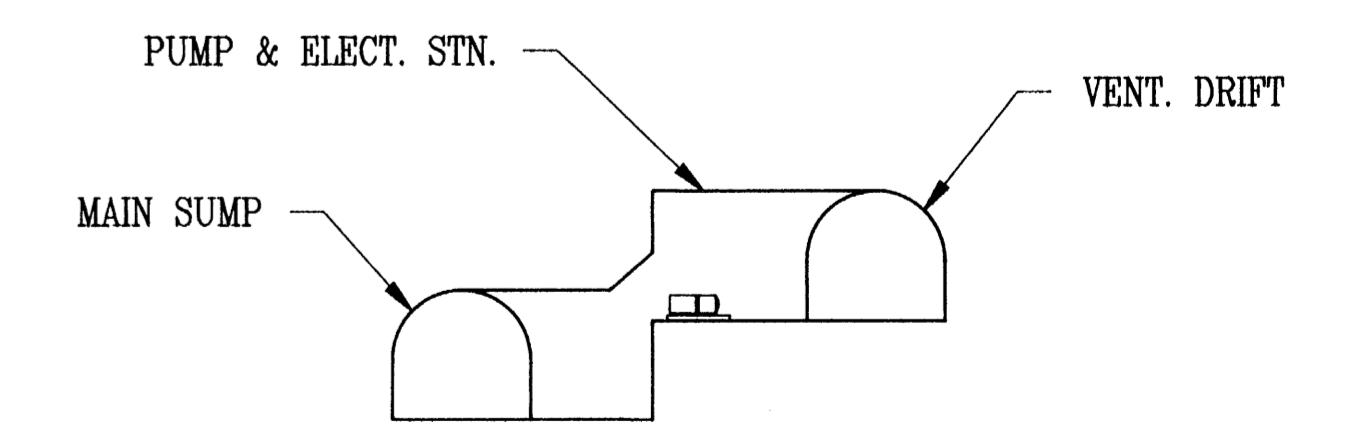
LOADING POCKET LEVEL PLAN



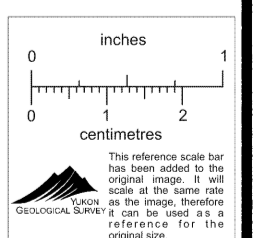
PROFILE



SECTION 'A - A'

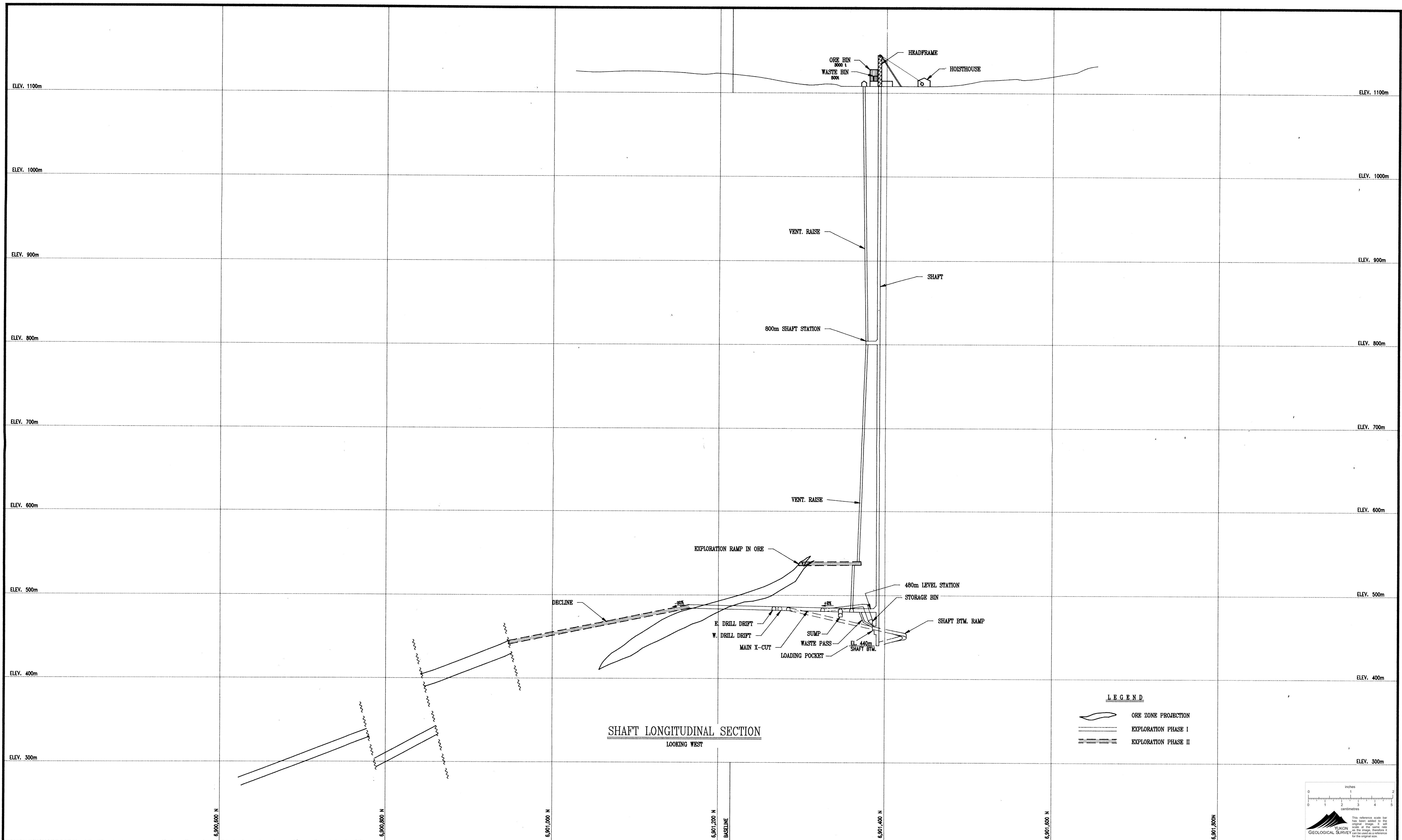


SECTION 'B - B'



DWG. NO.	REFERENCE DRAWING	DWG. NO.	REFERENCE DRAWING	NO.	DESCRIPTION OF REVISION	DATE	BY	NO.	DESCRIPTION OF REVISION	DATE	NO.	APPROVED:

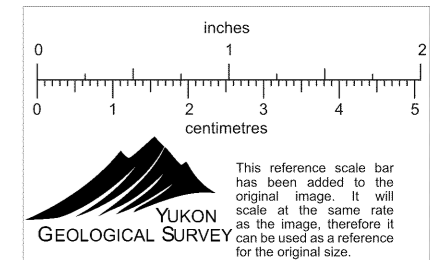
SCALE: 1:250 DESIGNED: S.McG. DRAWN: S.McG. CHECKED: S.McG. DATE: 02/89		CURRAGH RESOURCES CORP. DY DEPOSIT DEVELOPMENT PHASE G/A OF LOADOUT AREA	CANADIAN MINE DEVELOPMENT BRAMPTON, ONTARIO CANADA DWG. NO. 89-06-007 REV.
---	--	---	--



SHAFT LONGITUDINAL SECTION
LOOKING WEST

LEGEND

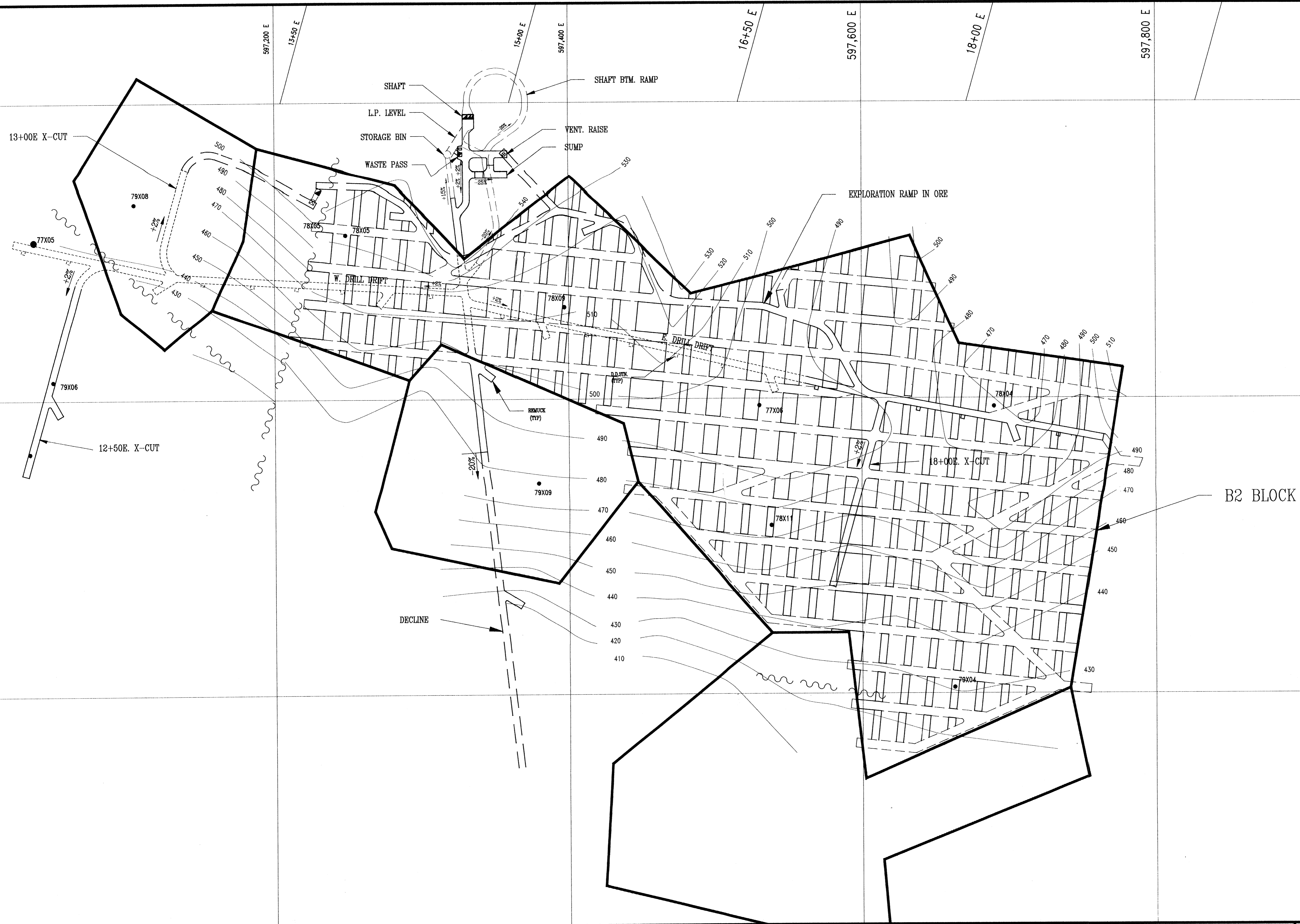
- ORE ZONE PROJECTION
- EXPLORATION PHASE I
- EXPLORATION PHASE II



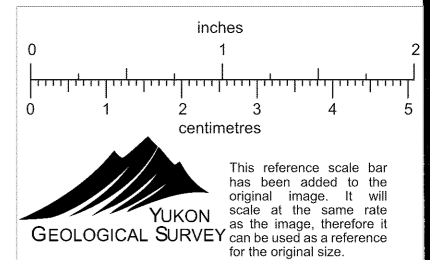
SCALE: 1:2000	DATE
DESIGNED:	02/89
DRAWN: S.M.G.	
CHECKED:	
APPROVED:	

NO.	DESCRIPTION OF REVISION	DATE	BY	NO.	DESCRIPTION OF REVISION	DATE	NO.

	CURRAGH RESOURCES CORP. DY DEPOSIT DEVELOPMENT PHASE SHAFT LONGITUDINAL SECTION LOOKING WEST		CANADIAN MINE DEVELOPMENT <small>BRAMPTON, ONTARIO CANADA</small>
	DWG. NO. 89-06-008	REV.	CANADA



B2 BLOCK

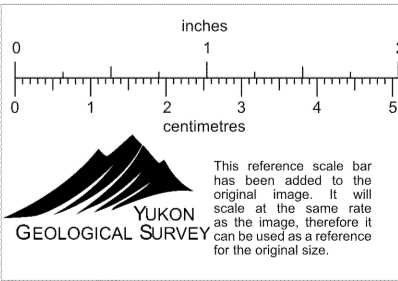
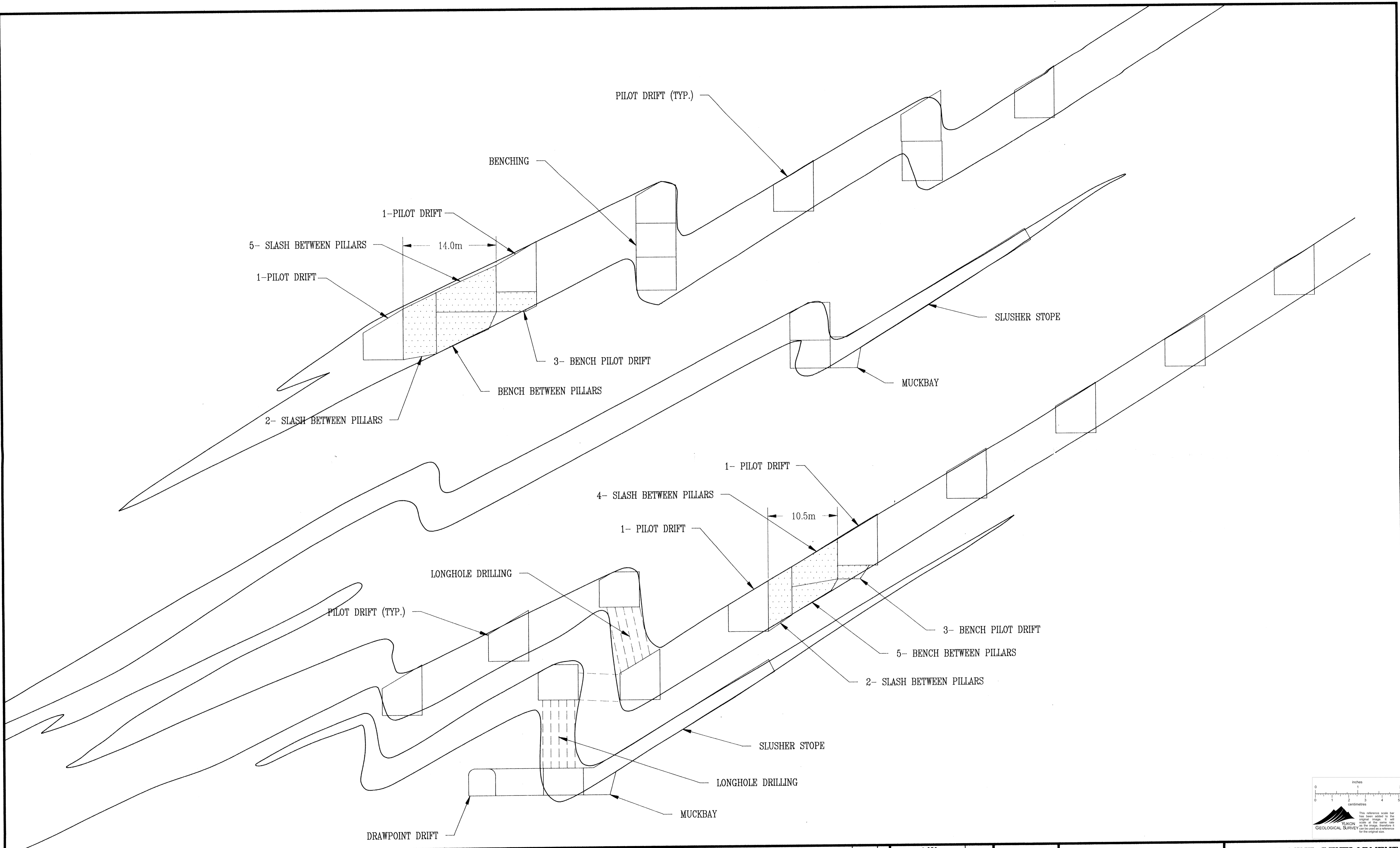


DWG. NO.	REFERENCE DRAWING	DWG. NO.	REFERENCE DRAWING	NO.	DESCRIPTION OF REVISION	DATE	BY	NO.	DESCRIPTION OF REVISION	DATE	NO.	APPROVED:

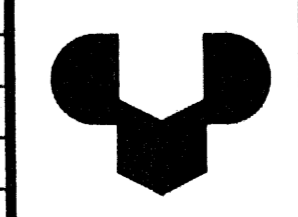
SCALE:	1:1250	DATE:	
DESIGNED:			
DRAWN:	S.McG.	02/89	
CHECKED:			
APPROVED:			

CURRAGH RESOURCES CORP.
DY DEPOSIT
 TYP. MINING PLAN

CANADIAN MINE DEVELOPMENT
 BRAMPTON, ONTARIO CANADA
 DWG. NO. 89-06-010
 REV.

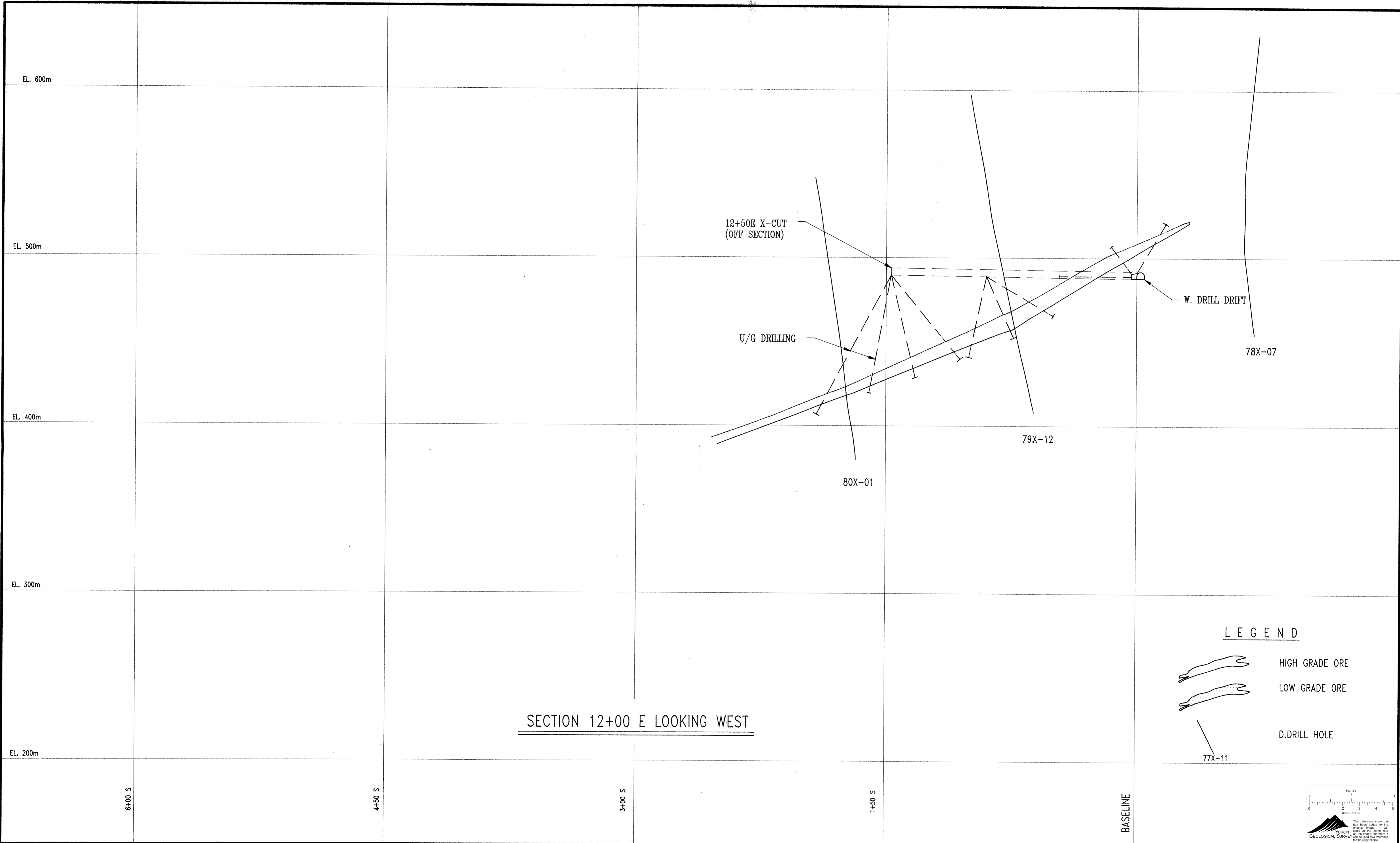


DWG. NO.		REFERENCE DRAWING		DWG. NO.		REFERENCE DRAWING		NO.		DESCRIPTION OF REVISION		DATE		BY		NO.		DESCRIPTION OF REVISION		DATE		NO.		APPROVED:		SCALE: 1:250		DATE		DESIGNED:		DRAWN: S.McG.		03/89		CHECKED:		APPROVED:	




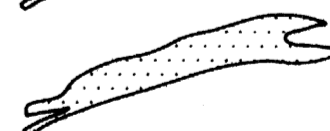

CURRAGH RESOURCES CORP.
DY DEPOSIT
TYP. MINING SECTION

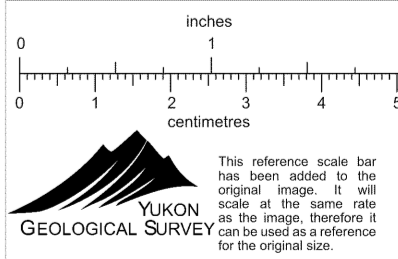
CANADIAN MINE DEVELOPMENT
 BRAMPTON, ONTARIO CANADA
 DWG. NO. **89-06-011** REV.



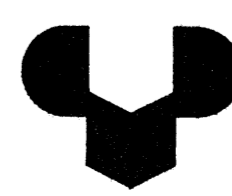
SECTION 12+00 E LOOKING WEST

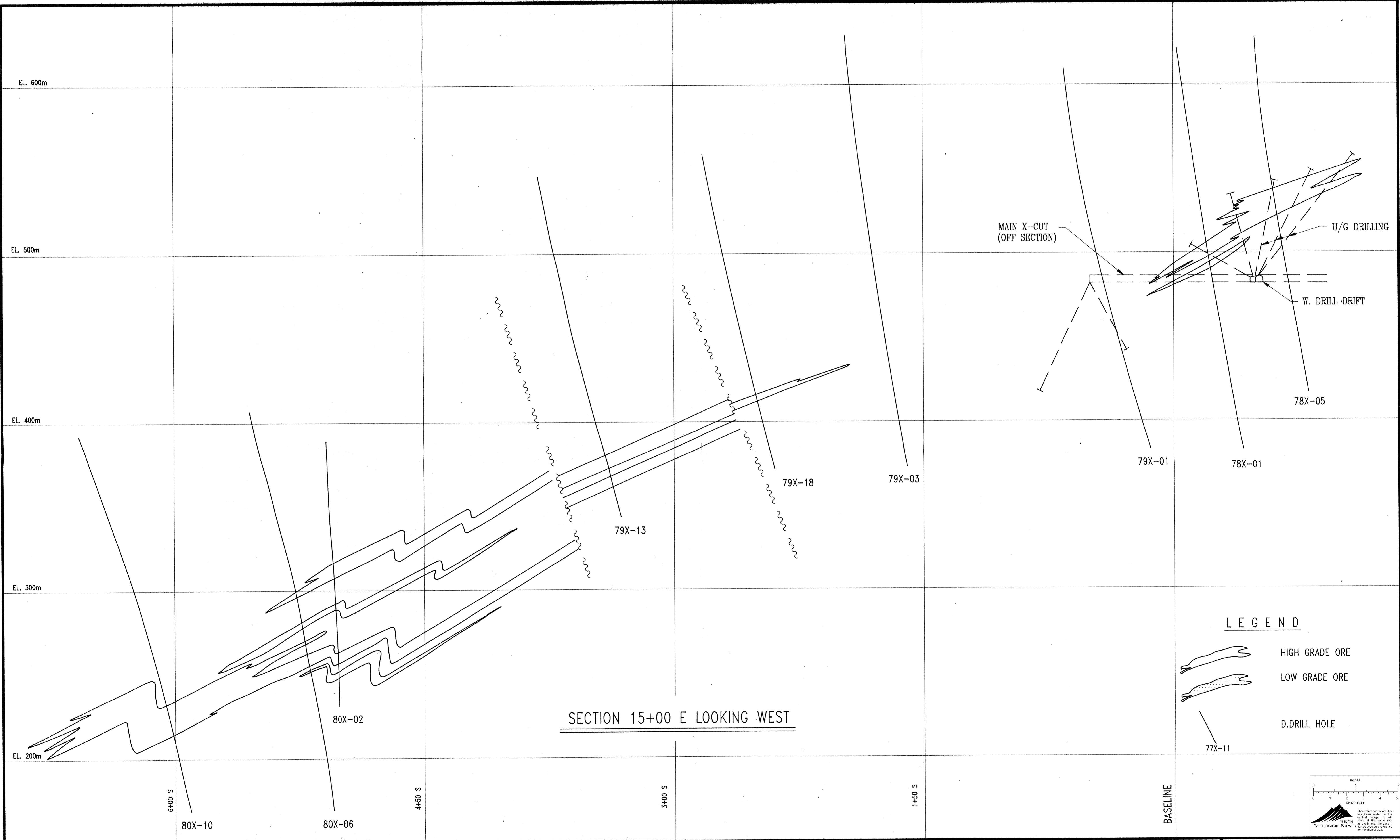
LEGEND

-  HIGH GRADE ORE
-  LOW GRADE ORE
-  D.DRILL HOLE






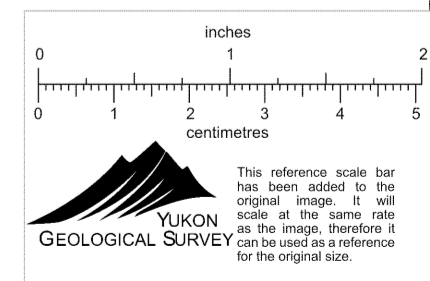
DWG. NO.	REFERENCE DRAWING	DWG. NO.	REFERENCE DRAWING	NO.	DESCRIPTION OF REVISION	DATE	BY	NO.	DESCRIPTION OF REVISION	DATE	NO.	APPROVED:

	CURRAGH RESOURCES CORP.		CANADIAN MINE DEVELOPMENT	
	DY DEPOSIT		BRAMPTON, ONTARIO CANADA	
	SECTION 12+00 E		DWG. NO.	89-06-012
			REV.	

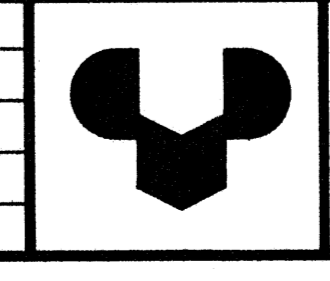


LEGEND

-  HIGH GRADE ORE
-  LOW GRADE ORE
-  D. DRILL HOLE

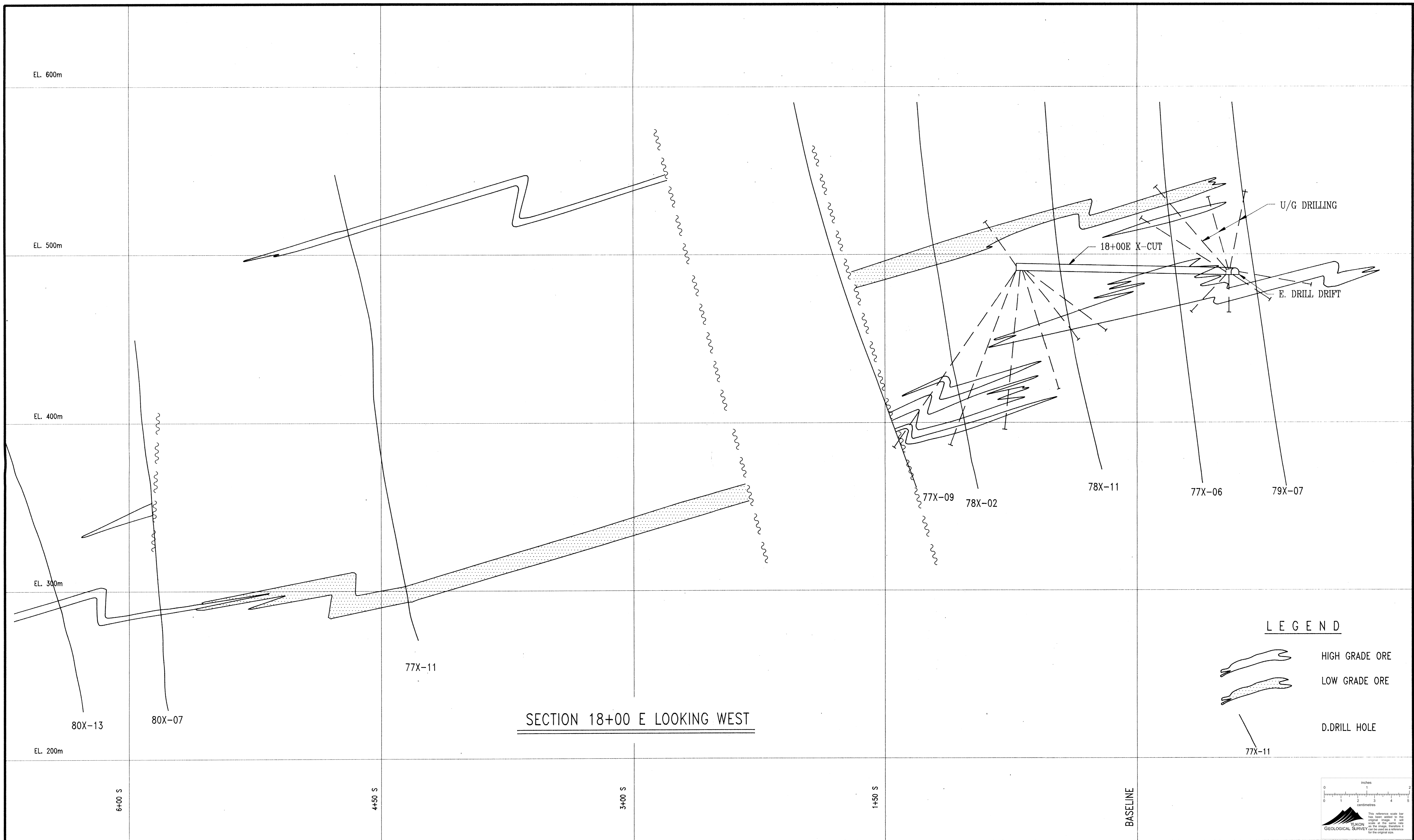


DWG. NO.	REFERENCE DRAWING	DWG. NO.	REFERENCE DRAWING	NO.	DESCRIPTION OF REVISION	DATE	BY	NO.	DESCRIPTION OF REVISION	DATE	NO.	APPROVED:




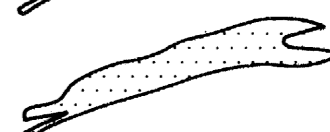

CURRAGH RESOURCES CORP.
DY DEPOSIT
 SECTION 15+00 E

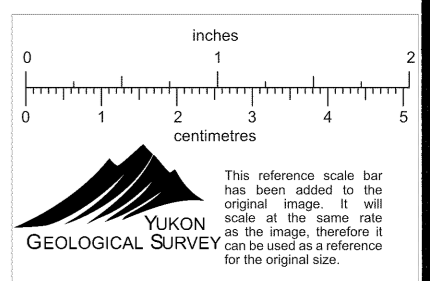
CANADIAN MINE DEVELOPMENT
 BRAMPTON, ONTARIO CANADA
 DWG. NO. **89-06-014** REV.



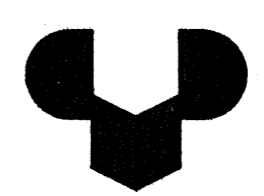
SECTION 18+00 E LOOKING WEST

LEGEND

-  HIGH GRADE ORE
-  LOW GRADE ORE
-  D.DRILL HOLE



DWG. NO.	REFERENCE DRAWING	DWG. NO.	REFERENCE DRAWING	NO.	DESCRIPTION OF REVISION	DATE	BY	NO.	DESCRIPTION OF REVISION	DATE	NO.	APPROVED:

SCALE: 1:1000 DESIGNED: DRAWN: S.McG CHECKED: APPROVED:	DATE: 02/89		CURRAGH RESOURCES CORP. DY DEPOSIT SECTION 18+00 E	CANADIAN MINE DEVELOPMENT BRAMPTON, ONTARIO CANADA DWG. NO. 89-06-016 REV.
---	-------------	---	--	---

