



*CURRAGH RESOURCES
DY DEPOSIT
EXPLORATION, MINE DEVELOPMENT, AND
PRODUCTION 2,300,000 TONNES PER YEAR
DRAWINGS
JUNE 1988*

005765

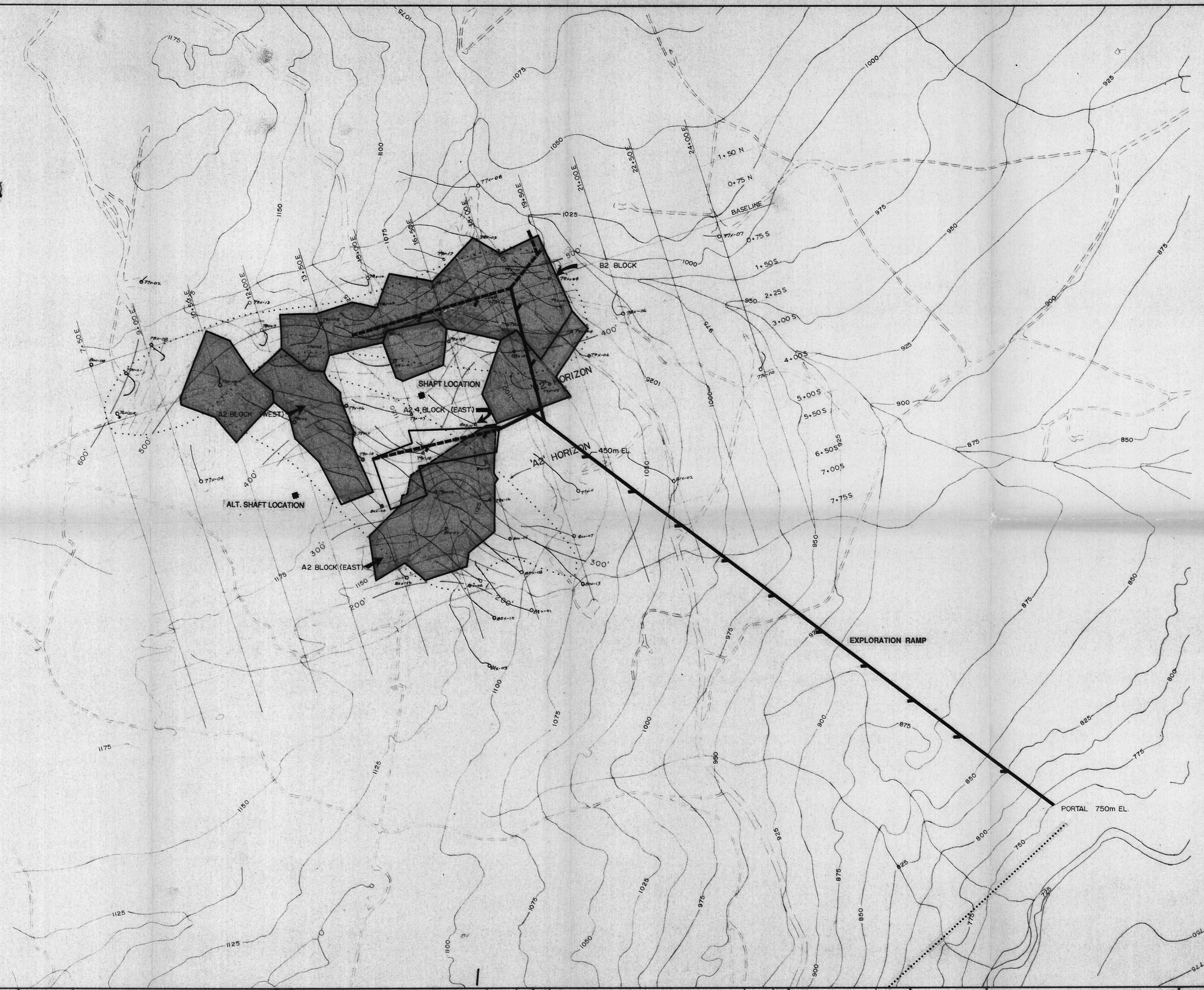
**CANADIAN
MINE
DEVELOPMENT**

**ENGINEERS
CONTRACTORS
SERVING THE MINING INDUSTRY**

CURRAGH RESOURCES - DY DEPOSIT

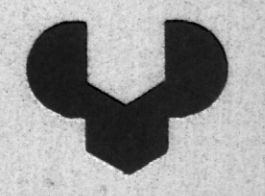
LIST OF ILLUSTRATIONS

PHASE I EXPLORATION - PLAN	88-24-001
PHASE I EXPLORATION - WORK SCHEDULE	88-24-002
HAUL ROAD REALIGNMENT - PLAN & PROFILE	88-24-003
TYPICAL MINING PLAN - B2 ZONE	88-24-004
MINING SEQUENCE SECTION	88-24-005
H.W. CONTOUR MAP - B2 ZONE	88-24-006
ISOPACH MAP - B2 ZONE	88-24-007
H.W. CONTOUR MAP - A2.4 & A2 EAST	88-24-008
ISOPACH MAP - A2.4 & A2 EAST	88-24-009
H.W. CONTOUR MAP - A2 WEST	88-24-010
ISPACH MAP - A2 WEST	88-24-011



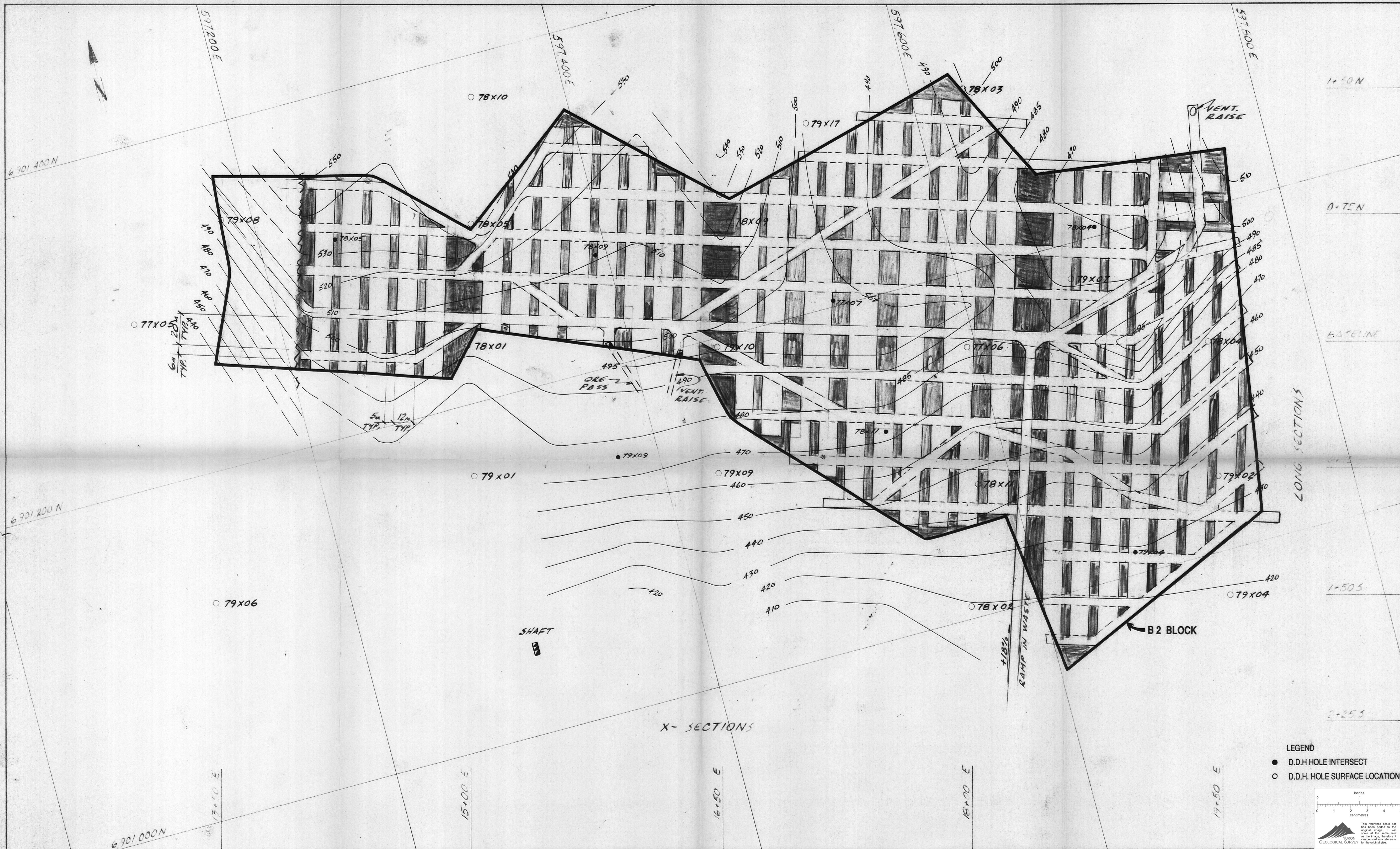
DWG. NO.	REFERENCE DRAWINGS	DWG. NO.	REFERENCE DRAWINGS	NO.	DESCRIPTION OF REVISION	DATE	BY	NO.	DESCRIPTION OF REVISION	DATE	BY	APPROVED:
				7				3				
				6				2				
				5				1				
				4				0				

SCALE: 1:5000 DATE
 DESIGNED:
 DRAWN: WS MAR '88
 CHECKED:
 APPROVED:



CURRAGH RESOURCES INC
DY DEPOSIT
 PLAN - PHASE I EXPLORATION

CANADIAN MINE DEVELOPMENT
 BRAMPTON, ONT. CANADA
 DWG. NO. **88-24-001** REV.



1+50N

0+75N

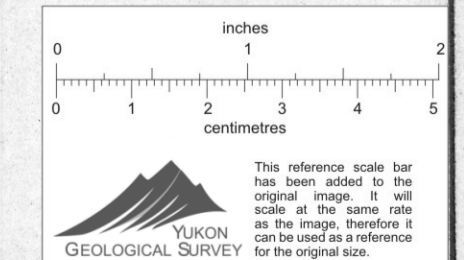
BASELINE

LONG SECTIONS

1+50S

2+25S

- LEGEND**
- D.D.H. HOLE INTERSECT
 - D.D.H. HOLE SURFACE LOCATION

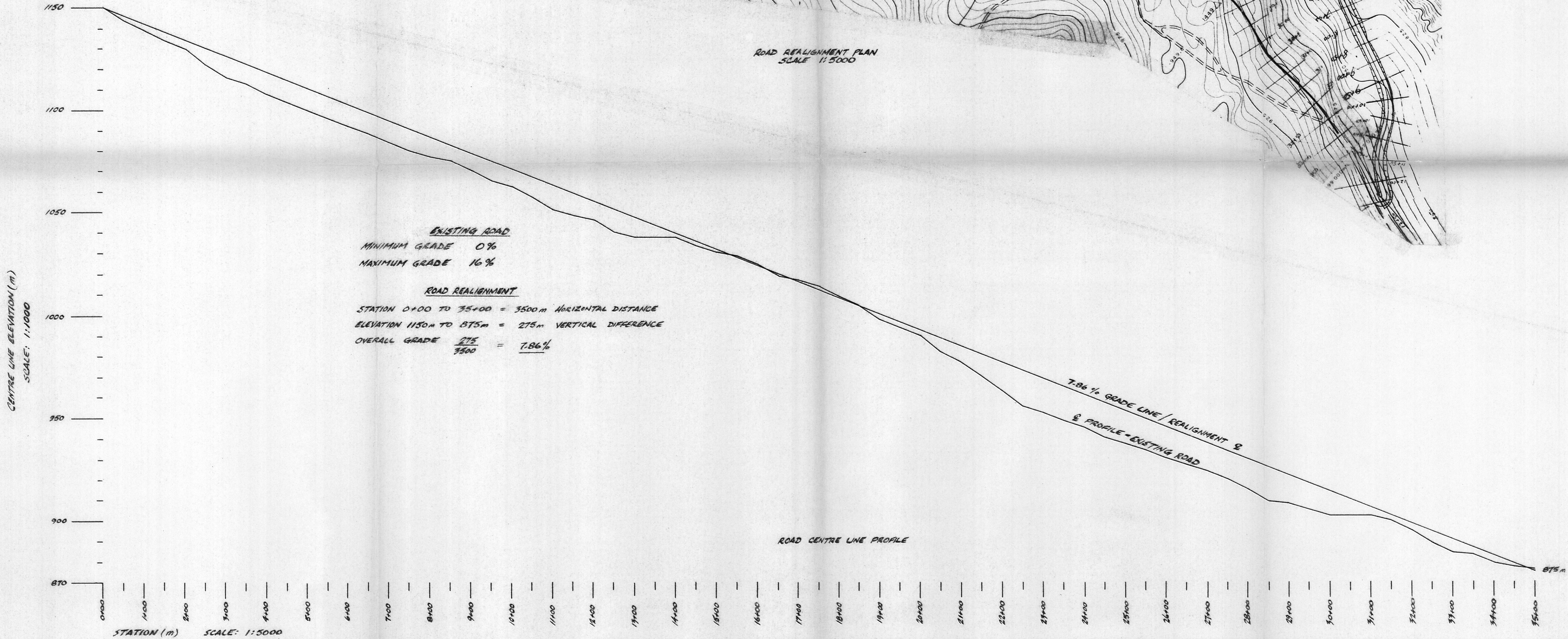
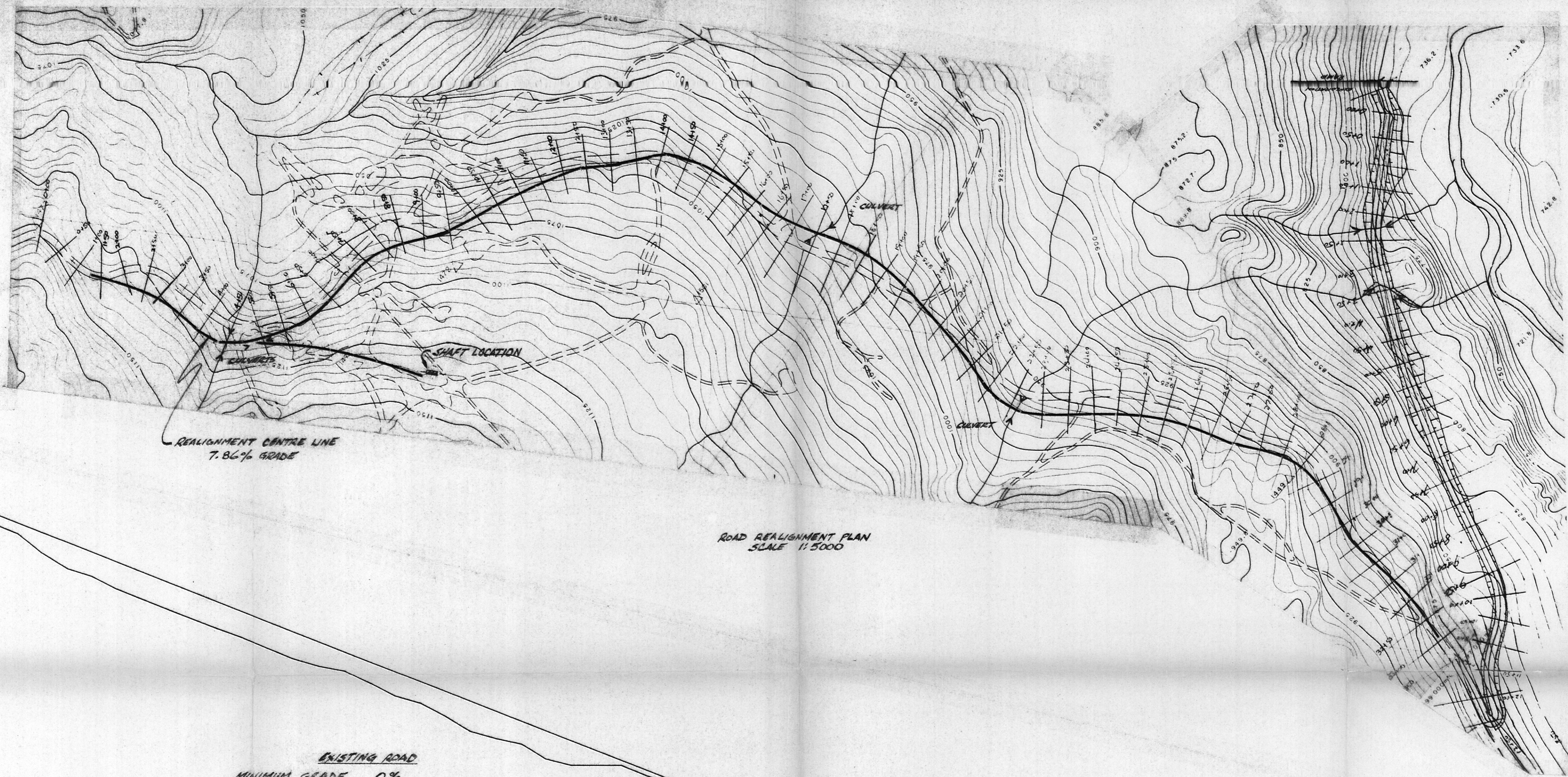


DWG. NO.	REFERENCE DRAWINGS	DWG. NO.	REFERENCE DRAWINGS	NO.	DESCRIPTION OF REVISION	DATE	BY	NO.	DESCRIPTION OF REVISION	DATE	BY	APPROVED:
				7				3				
				6				2				
				5				1				
				4				0				

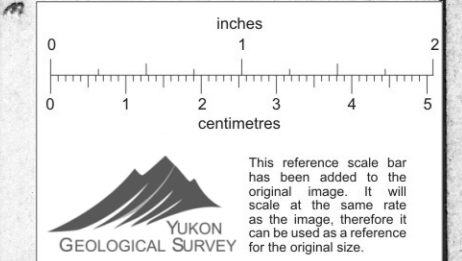
CURRAGH RESOURCES CORP.
BY DEPOSIT
 TYP. MINING PLAN
 B2 ZONE

CANADIAN MINE DEVELOPMENT
 BRAMPTON, ONT. CANADA

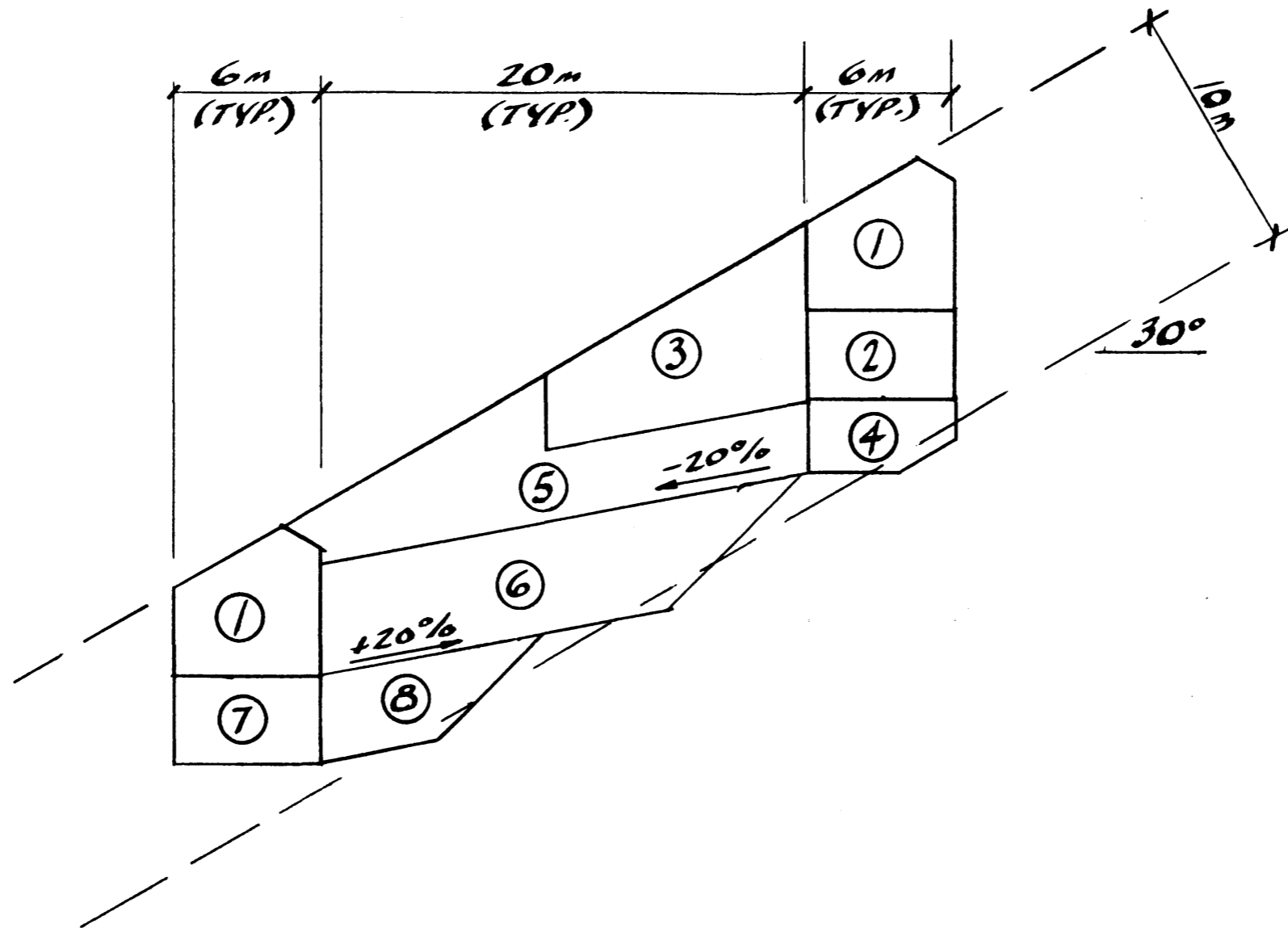
DWG. NO. **88-24-004** REV.



EVACUATION RAMP ACCESS ROAD (10% GRADE)



DWG. NO.	REFERENCE DRAWINGS	DWG. NO.	REFERENCE DRAWINGS	NO.	DESCRIPTION OF REVISION	DATE	BY	NO.	DESCRIPTION OF REVISION	DATE	BY	APPROVED:	SCALE: AS SHOWN	DATE	<p>CURRAGH RESOURCES CORP. DY DEPOSIT HAUL ROAD REALIGNMENT PLAN & PROFILE</p>	<p>CANADIAN MINE DEVELOPMENT BRAMPTON, ONT. CANADA</p> <p>DWG. NO. 88-24-003</p>	REV.
				7				3									
				6				2									
				5				1									
				4				0									



SEQUENCE

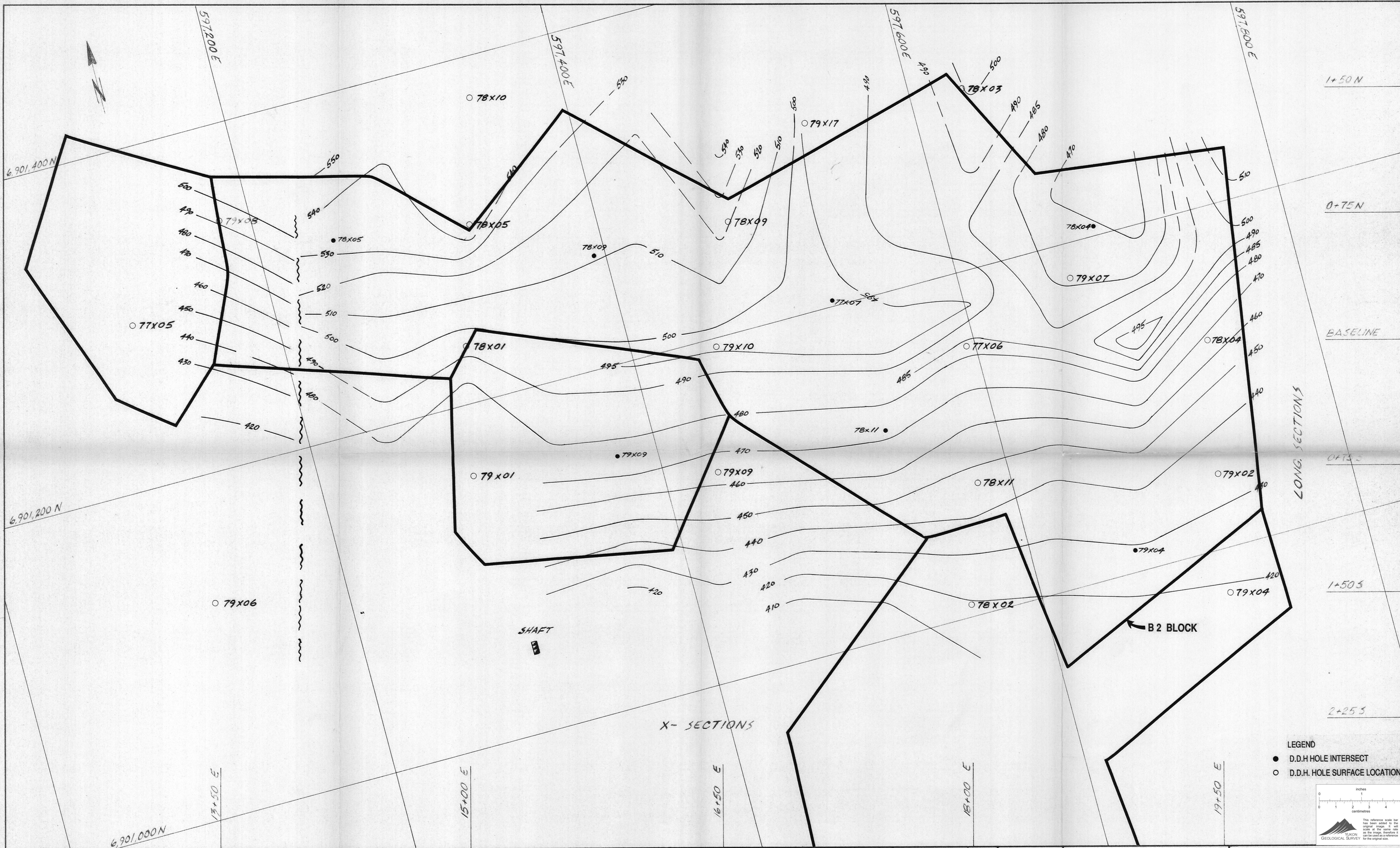
- 1 - PILOT DRIFTS
- 2 - BENCH DRIFT
- 3 - SLASH BETWEEN PILLARS
- 4 - BENCH DRIFT
- 5 - BENCH SLASH BETWEEN PILLARS
- 6 - BENCH BETWEEN PILLARS
- 7 - BENCH LOWER DRIFT
- 8 - BENCH BETWEEN PILLARS

SCALE: 1:250	DATE
DESIGNED:	
DRAWN: S. MEG.	JUNE 30 1988
CHECKED:	
APPROVED:	

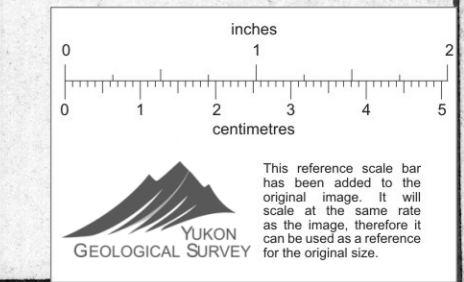


CURRAGH RESOURCES CORP.
DY DEPOSIT
MINING SEQUENCE SECTION

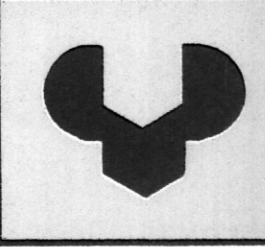
CANADIAN MINE DEVELOPMENT	
BRAMPTON, ONT.	CANADA
DWG. No.	REV.
88-24-005	



- LEGEND
- D.D.H. HOLE INTERSECT
 - D.D.H. HOLE SURFACE LOCATION

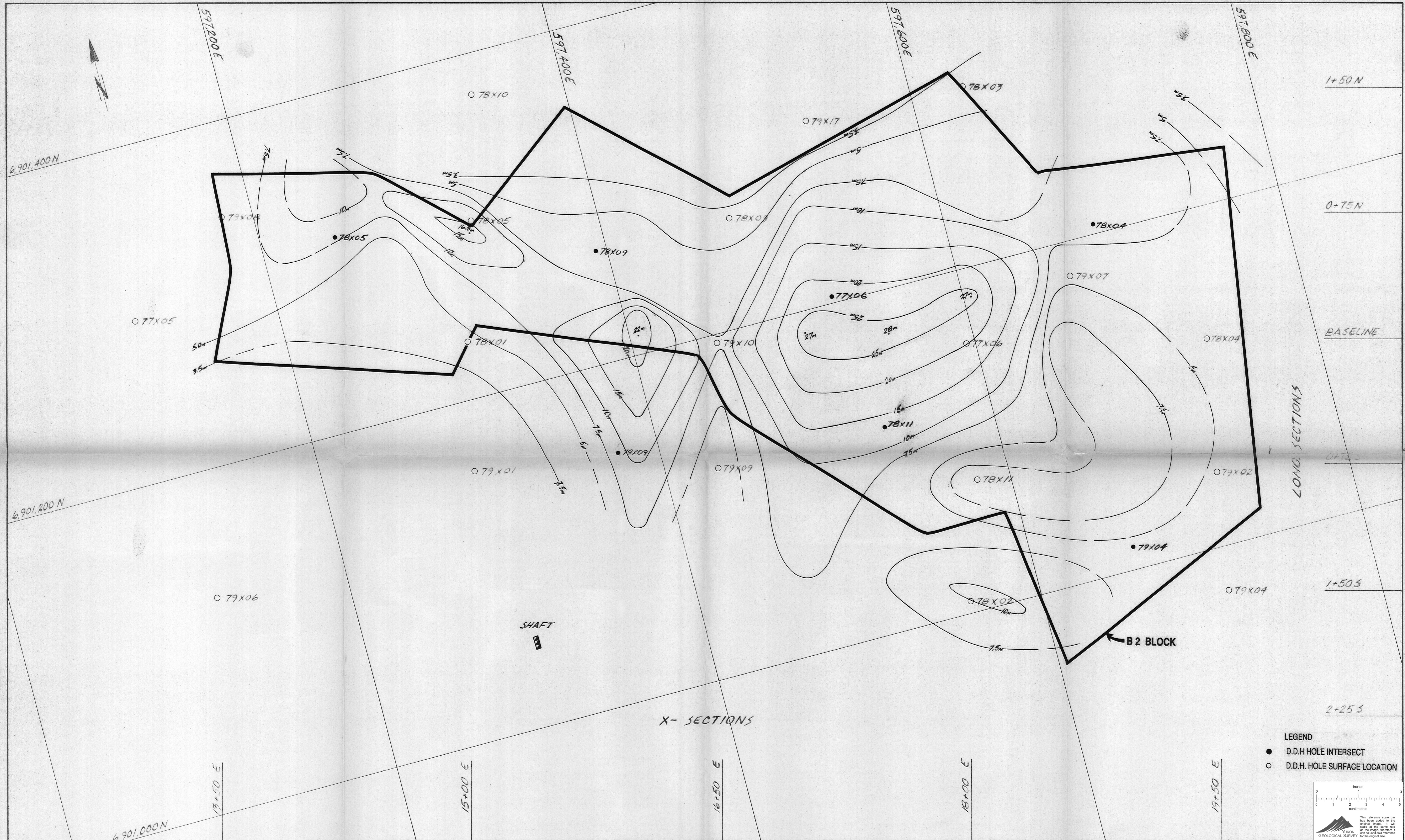


DWG. NO.	REFERENCE DRAWINGS	DWG. NO.	REFERENCE DRAWINGS	NO.	DESCRIPTION OF REVISION	DATE	BY	NO.	DESCRIPTION OF REVISION	DATE	BY	APPROVED:
				7				3				
				6				2				
				5				1				
				4				0				

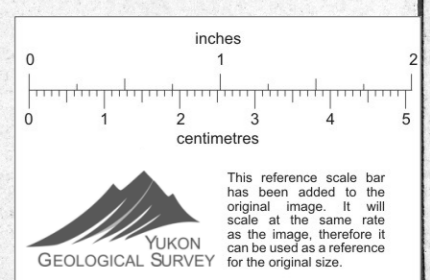


CURRAGH RESOURCES CORP.
BY DEPOSIT
HANGING WALL CONTOURS
B2 ZONE

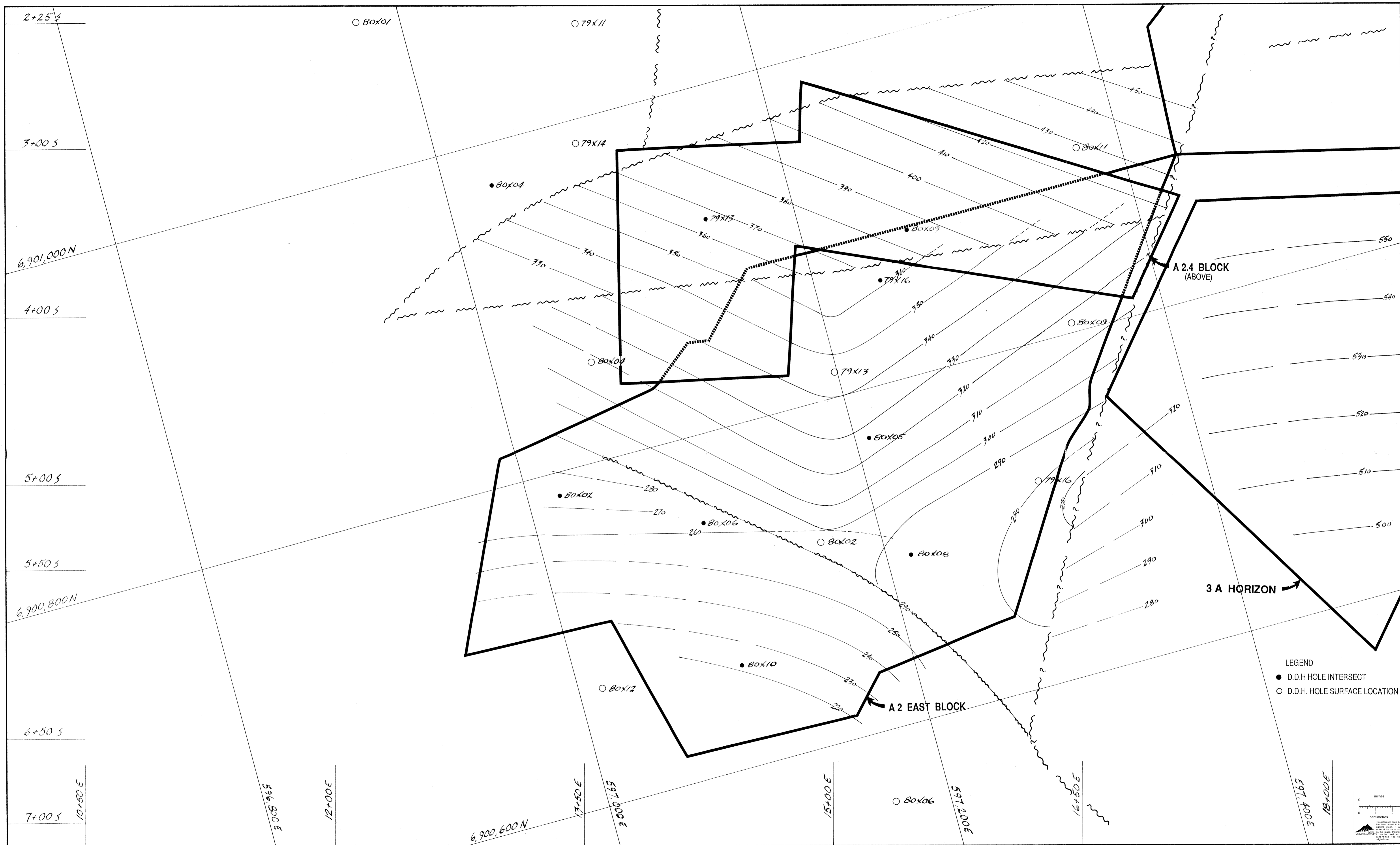
CANADIAN MINE DEVELOPMENT
 BRAMPTON, ONT. CANADA
 DWG. NO. **88-24-006**
 REV.



- LEGEND
- D.D.H. HOLE INTERSECT
 - D.D.H. HOLE SURFACE LOCATION



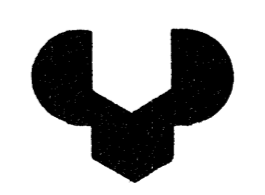
										<p>CURRAGH RESOURCES CORP. BY DEPOSIT ISOPACH MAP B2 ZONE</p>	<p>CANADIAN MINE DEVELOPMENT BRAMPTON, ONT. CANADA</p> <p>DWG. NO. 88-24-007 REV.</p>	
7				3		SCALE: 1:1000	DATE					
6				2		DESIGNED:						
5				1		DRAWN: WS						
4				0		CHECKED:						
DWG. NO.	REFERENCE DRAWINGS	DWG. NO.	REFERENCE DRAWINGS	NO.	DESCRIPTION OF REVISION	DATE	BY	NO.	DESCRIPTION OF REVISION	DATE	BY	APPROVED:



DWG. NO.	REFERENCE DRAWINGS	DWG. NO.	REFERENCE DRAWINGS

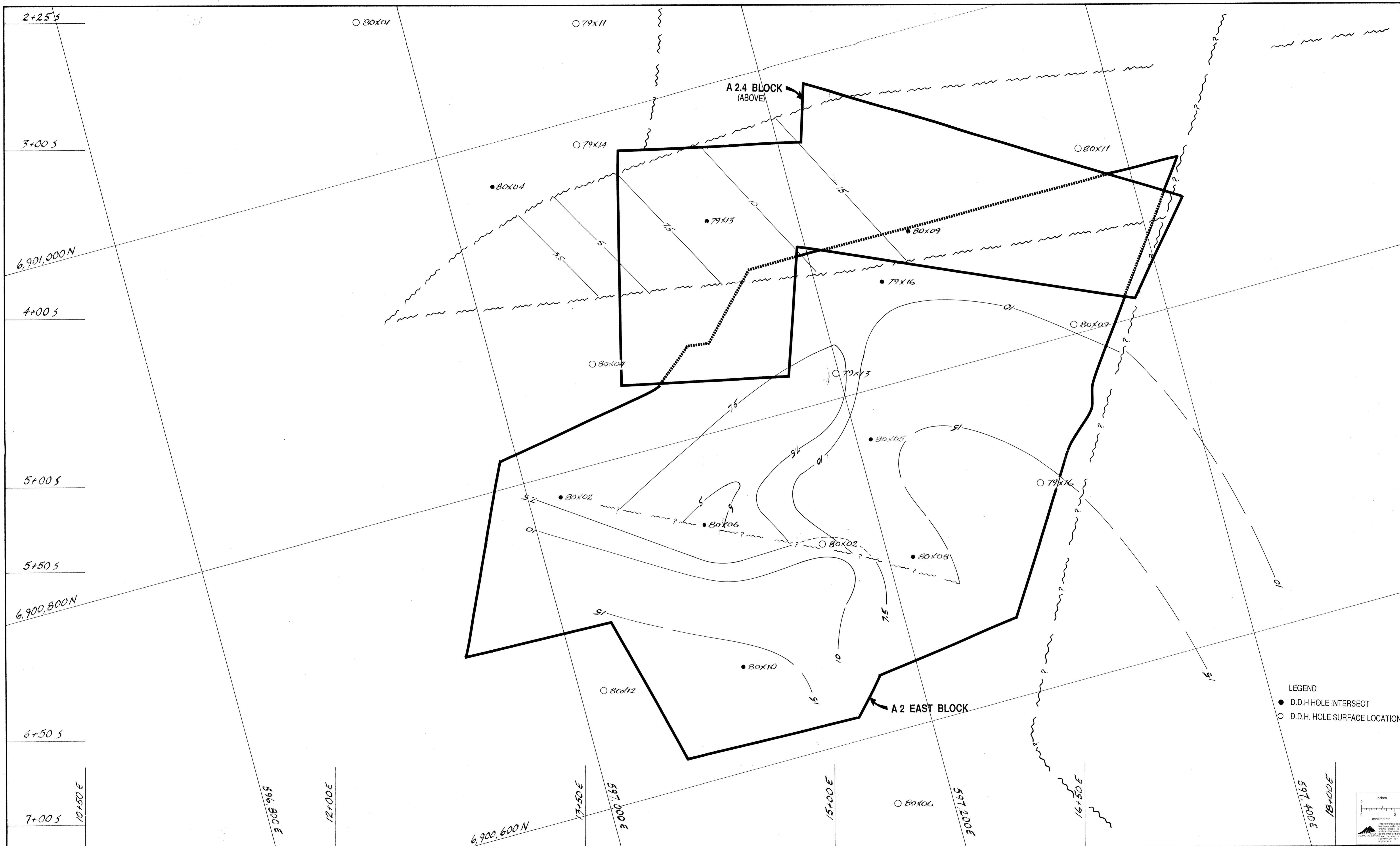
NO.	DESCRIPTION OF REVISION	DATE	BY	NO.	DESCRIPTION OF REVISION	DATE	BY
7				3			
6				2			
5				1			
4				0			

SCALE:	1:1000	DATE	
DESIGNED:			
DRAWN:	WS		
CHECKED:			
APPROVED:			

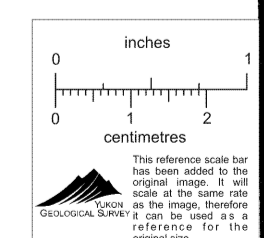


CURRAGH RESOURCES CORP.
 DY DEPOSIT
 A2.4 & A2 EAST
 HW CONTOUR MAP

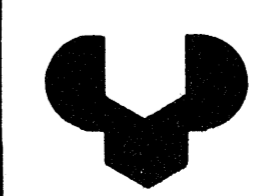
CANADIAN MINE DEVELOPMENT	
BRAMPTON, ONT.	CANADA
DWG. NO.	REV.
88-24-008	



LEGEND
 ● D.D.H. HOLE INTERSECT
 ○ D.D.H. HOLE SURFACE LOCATION

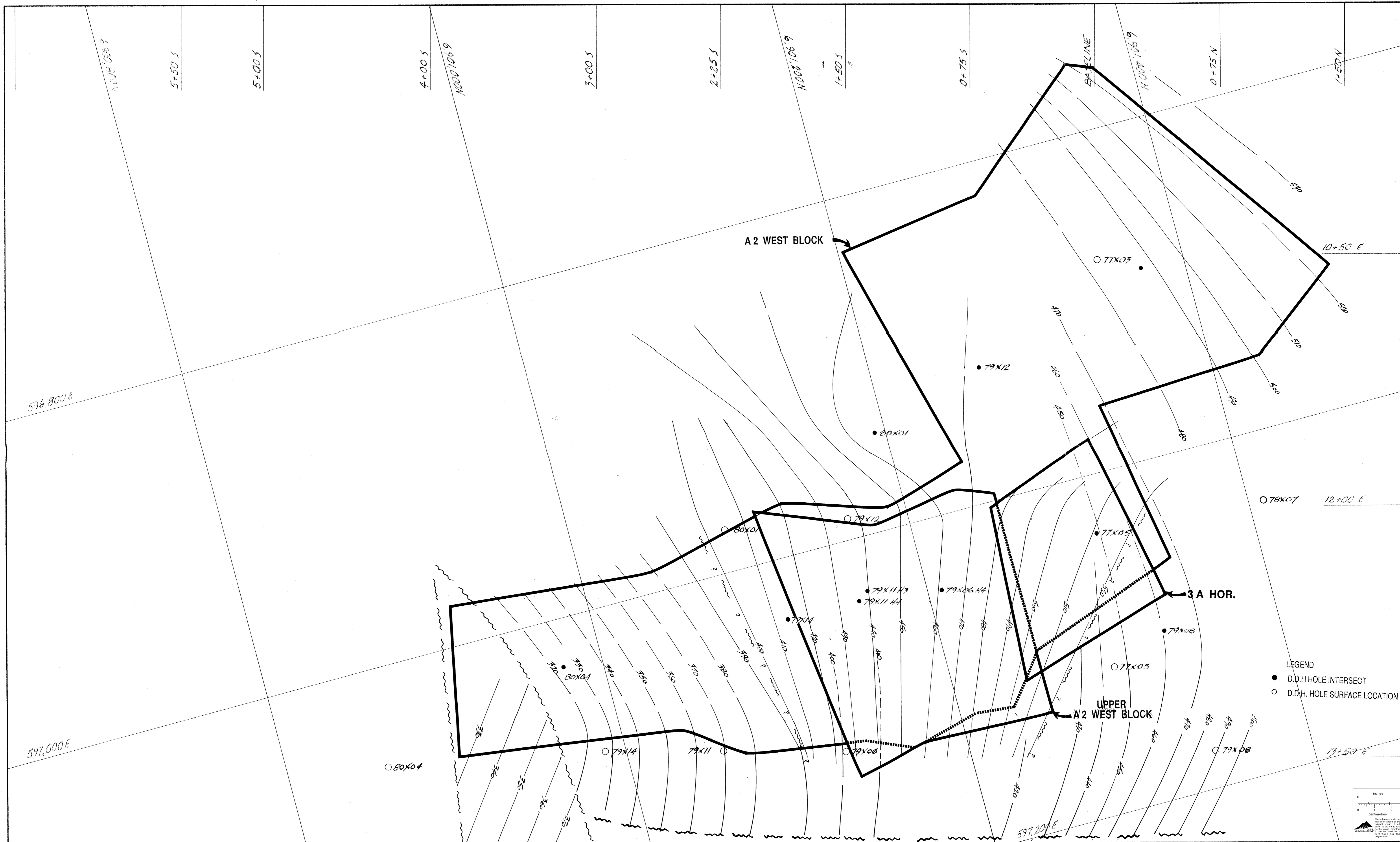


DWG. NO.		REFERENCE DRAWINGS		DWG. NO.		REFERENCE DRAWINGS		NO.		DESCRIPTION OF REVISION		DATE		BY		NO.		DESCRIPTION OF REVISION		DATE		BY		APPROVED:		SCALE: 1:1000		DATE	



CURRAGH RESOURCES CORP.
 DY DEPOSIT
 A2.4 & A2 EAST
 1:50 PACH MAP

CANADIAN MINE DEVELOPMENT
 BRAMPTON, ONT. CANADA
 DWG. NO. 88-24-009
 REV.

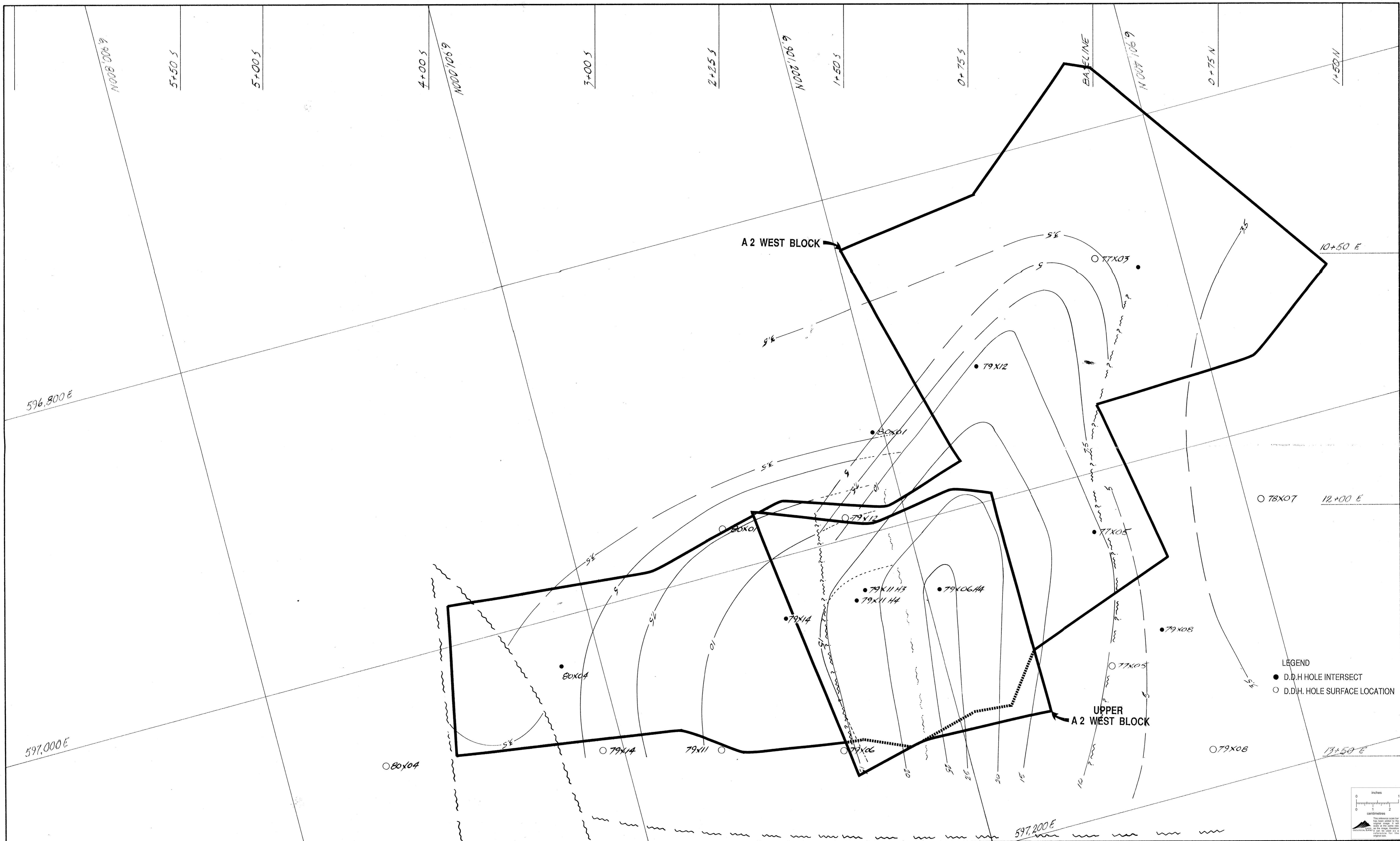



DWG. NO.		REFERENCE DRAWINGS		DWG. NO.		REFERENCE DRAWINGS		NO.		DESCRIPTION OF REVISION		DATE		BY		NO.		DESCRIPTION OF REVISION		DATE		BY		APPROVED:	



CURRAGH RESOURCES CORP.
BY DEPOSIT
A2 WEST
HW CONTOUR MAP

CANADIAN MINE DEVELOPMENT
BRAMPTON, ONT. CANADA
DWG. NO. 88-24-010
REV.



DWG. NO.	REFERENCE DRAWINGS	DWG. NO.	REFERENCE DRAWINGS	NO.	DESCRIPTION OF REVISION	DATE	BY	NO.	DESCRIPTION OF REVISION	DATE	BY	APPROVED:	SCALE: 1:1000	DATE	 CURRAGH RESOURCES CORP. DY DEPOSIT A2 WEST 150PACH MAP	CANADIAN MINE DEVELOPMENT BRAMPTON, ONT. CANADA DWG. NO. 88-24-011 REV.
				7				3								
				6				2								
				5				1								
				4				0								