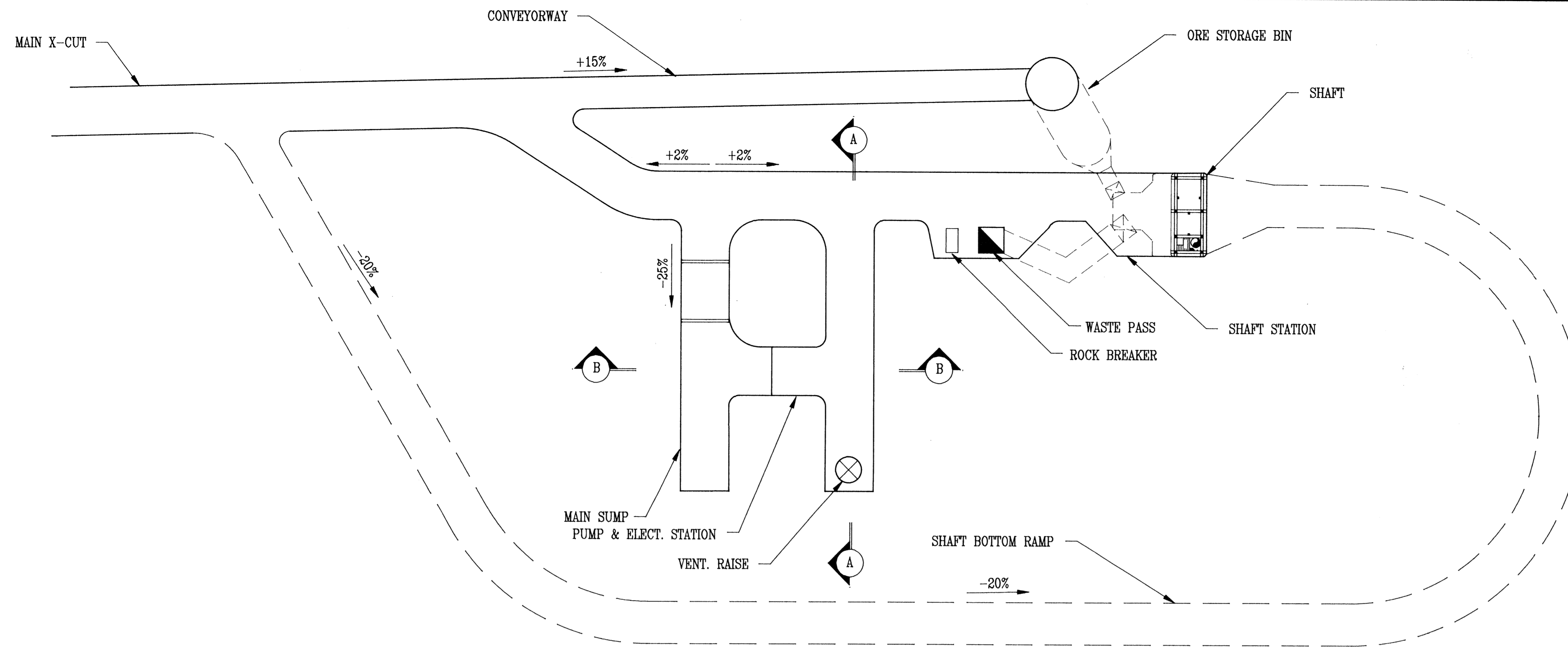


**CURRAGH RESOURCES INC.
DY DEPOSIT
EXPLORATION RAMP ACCESS
ILLUSTRATIONS
APRIL 1989**

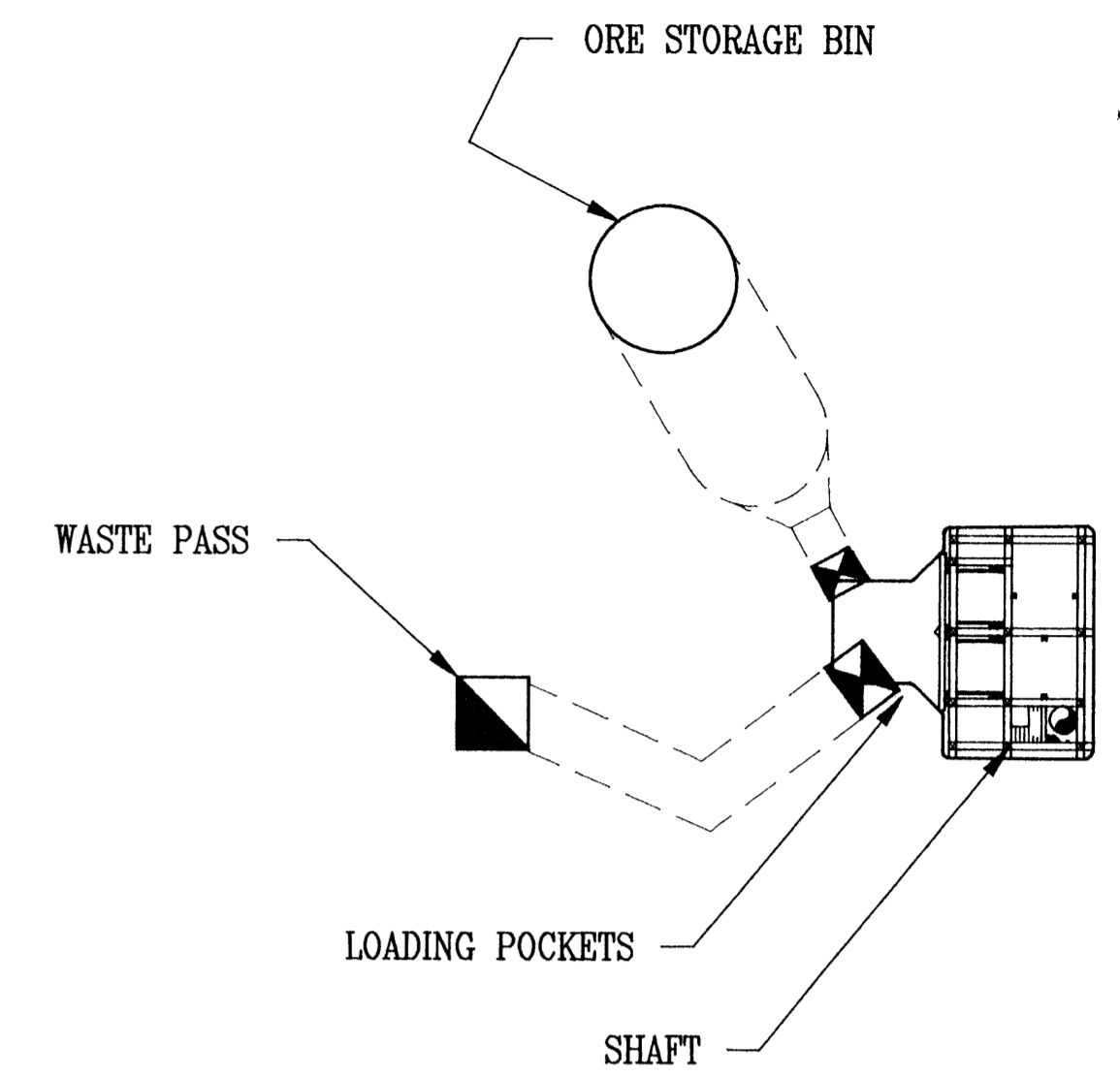
005766

**CANADIAN
MINE
DEVELOPMENT**

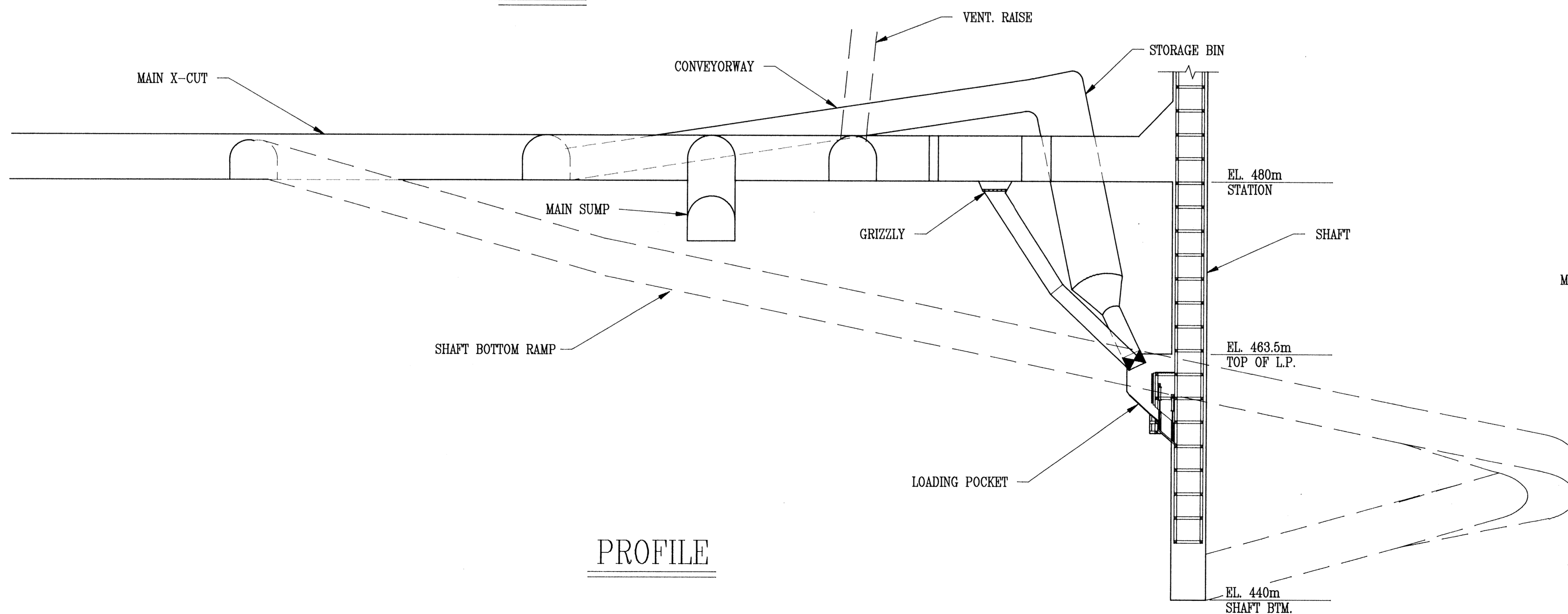
**ENGINEERS
CONTRACTORS
SERVING THE MINING INDUSTRY**



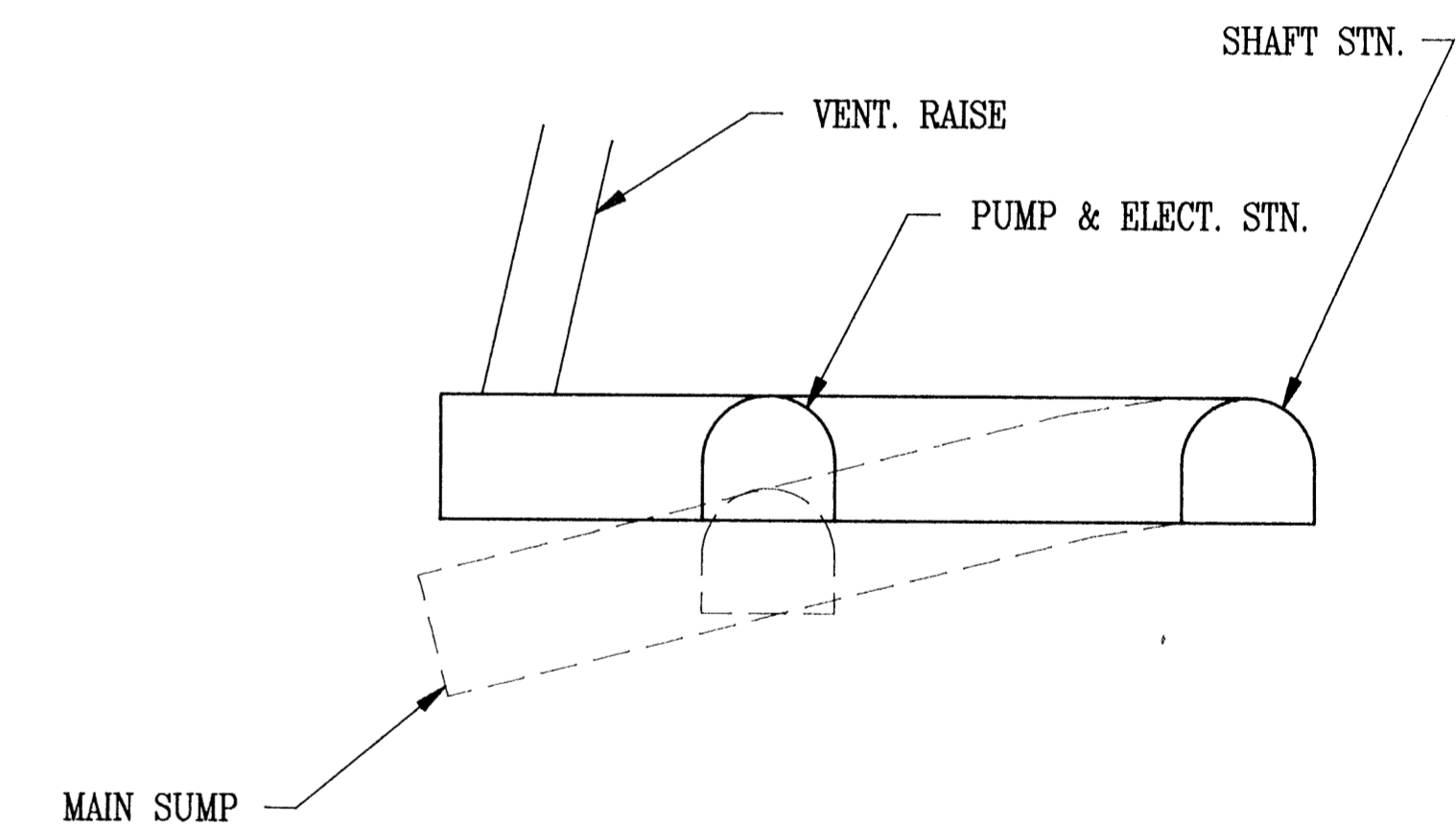
PLAN



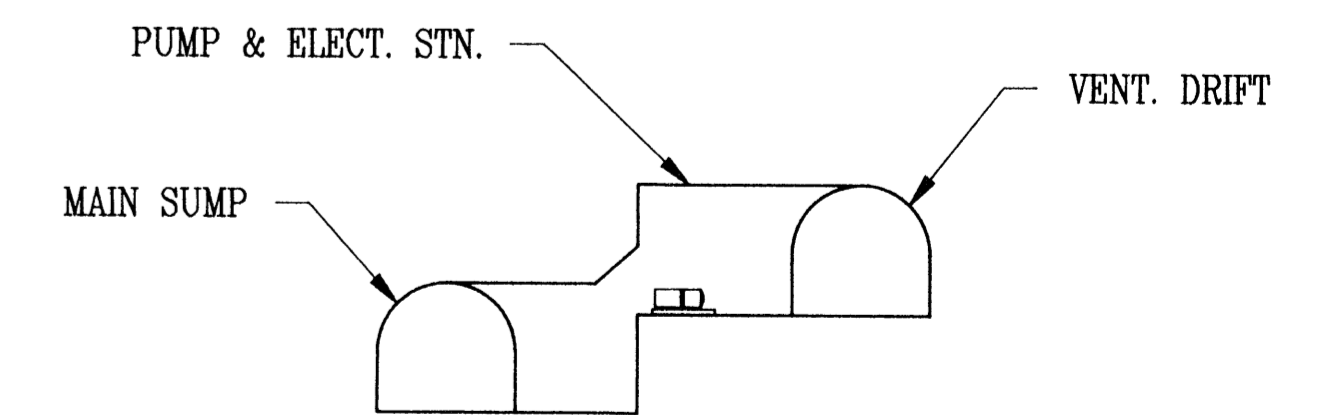
LOADING POCKET LEVEL PLAN



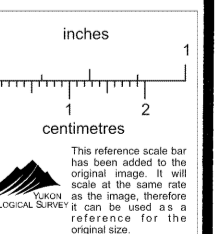
PROFILE



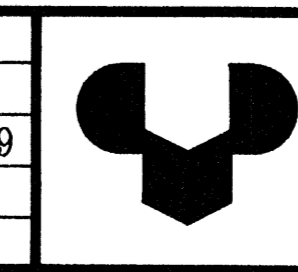
SECTION 'A - A'



SECTION 'B - B'

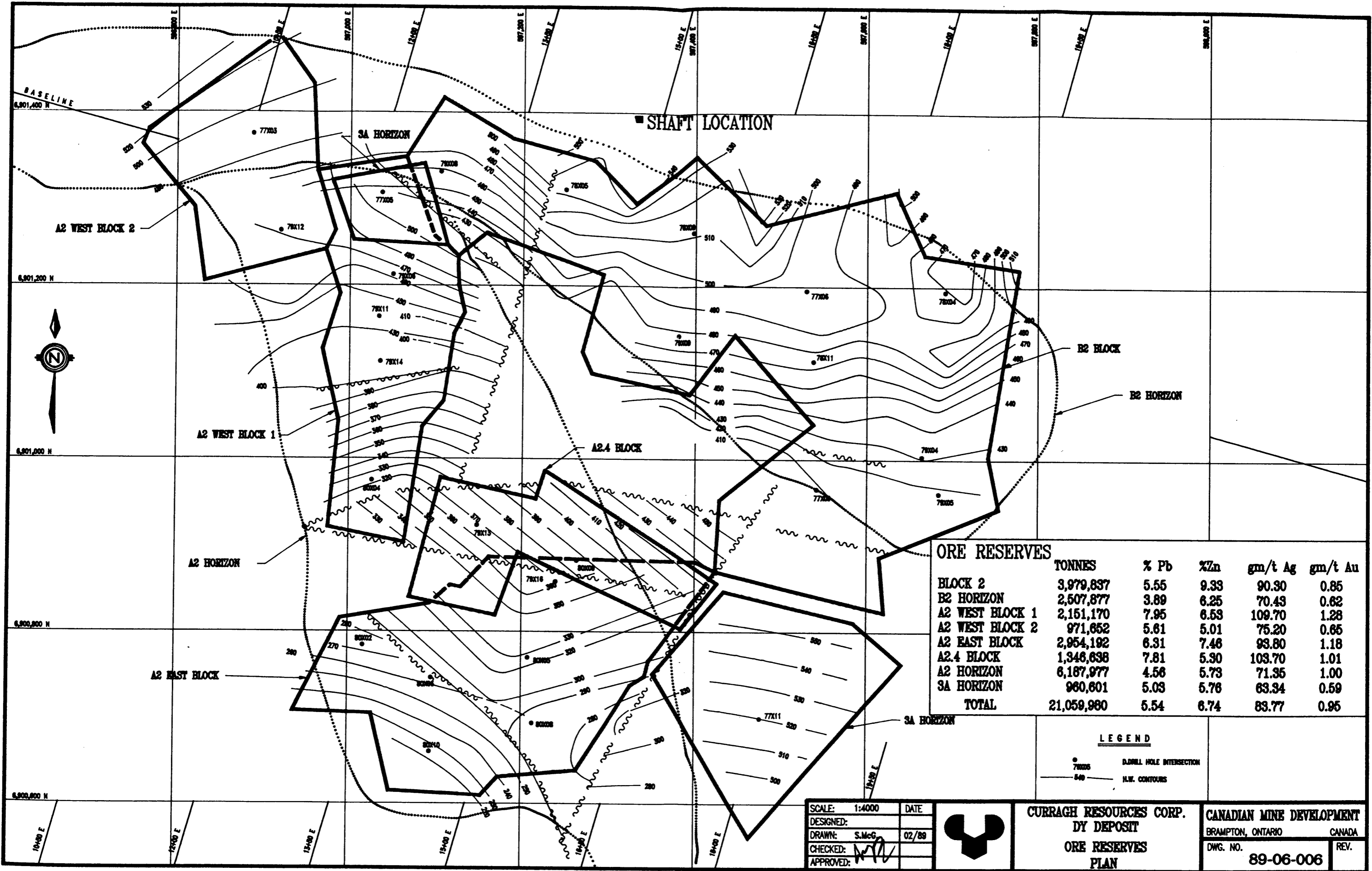


DWG. NO.	REFERENCE DRAWING	DWG. NO.	REFERENCE DRAWING	NO.	DESCRIPTION OF REVISION	DATE	BY	NO.	DESCRIPTION OF REVISION	DATE	NO.	APPROVED:



CURRAGH RESOURCES CORP.
DY DEPOSIT
DEVELOPMENT PHASE
G/A OF LOADOUT AREA

CANADIAN MINE DEVELOPMENT
BRAMPTON, ONTARIO CANADA
DWG. NO. 89-06-007 REV.



ORE RESERVES

	TONNES	% Pb	% Zn	gm/t Ag	gm/t Au
BLOCK 2	3,979,837	5.55	9.33	90.30	0.85
B2 HORIZON	2,507,877	3.89	6.25	70.43	0.62
A2 WEST BLOCK 1	2,151,170	7.95	6.53	109.70	1.28
A2 WEST BLOCK 2	971,652	5.61	5.01	75.20	0.65
A2 EAST BLOCK	2,954,192	6.31	7.46	93.80	1.18
A2.4 BLOCK	1,346,638	7.81	5.30	103.70	1.01
A2 HORIZON	6,187,977	4.56	5.73	71.35	1.00
3A HORIZON	960,601	5.03	5.76	63.34	0.59
TOTAL	21,059,980	5.54	6.74	83.77	0.95

LEGEND

● 78X05 DRILL HOLE INTERSECTION

— 540 I.W. CONTOURS

SCALE: 1:4000 DATE: _____

DESIGNED: _____

DRAWN: S.McG 02/89

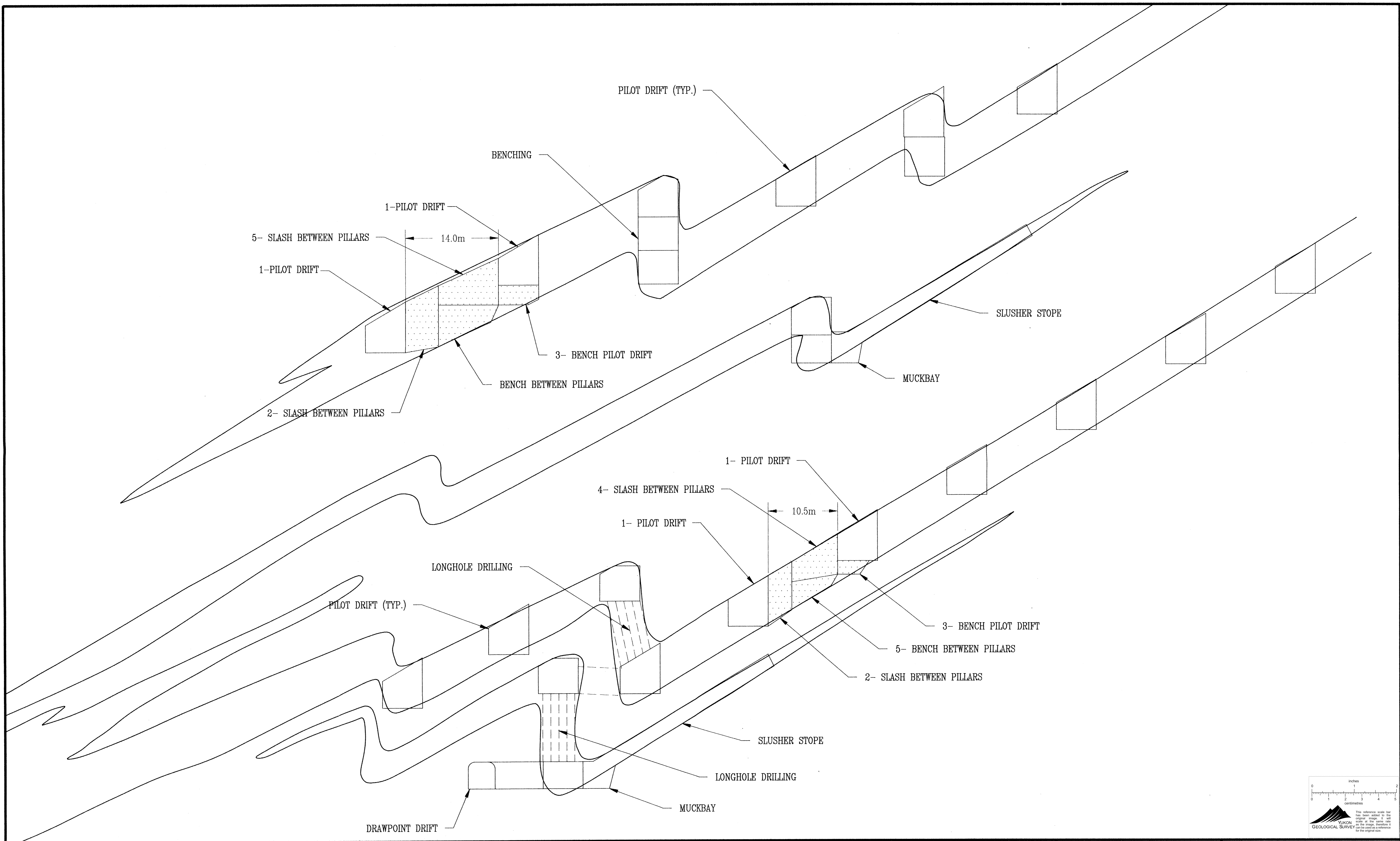
CHECKED: *WJ*

APPROVED: _____



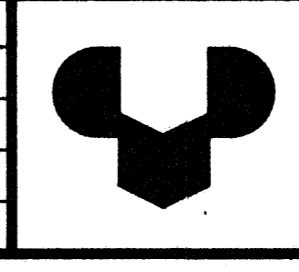
CURRAGH RESOURCES CORP.
DY DEPOSIT
ORE RESERVES
PLAN

CANADIAN MINE DEVELOPMENT
 BRAMPTON, ONTARIO CANADA
 DWG. NO. **89-06-006** REV. _____



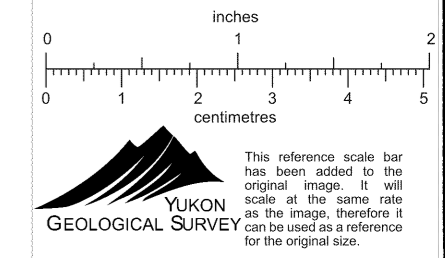
DWG. NO.	REFERENCE DRAWING	DWG. NO.	REFERENCE DRAWING	NO.	DESCRIPTION OF REVISION	DATE	BY	NO.	DESCRIPTION OF REVISION	DATE	NO.	APPROVED:

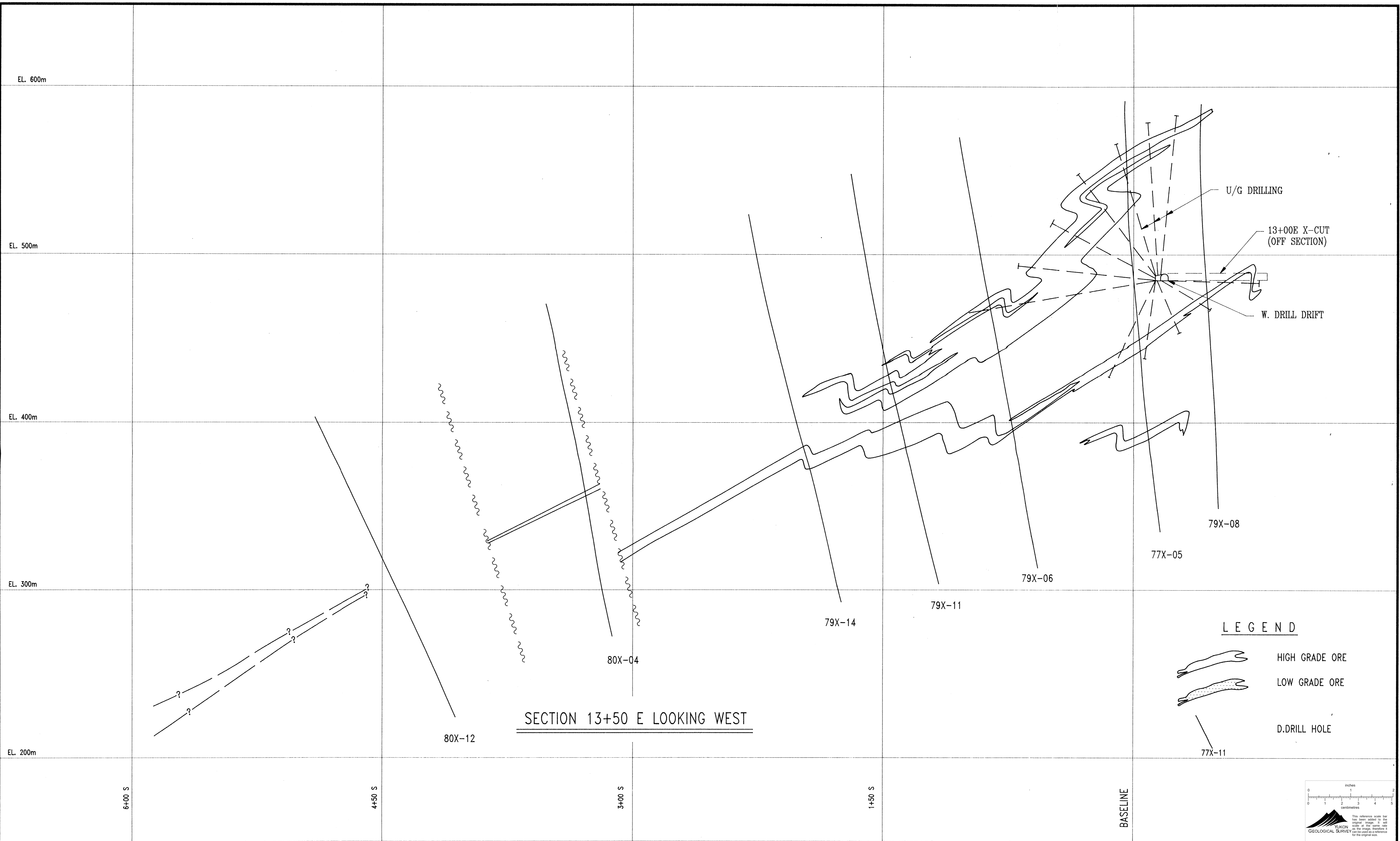
SCALE:	1:250	DATE	
DESIGNED:			
DRAWN:	S.McG.	03/89	
CHECKED:			
APPROVED:			



CURRAGH RESOURCES CORP.
DY DEPOSIT
TYP. MINING SECTION


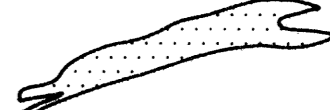

CANADIAN MINE DEVELOPMENT
 BRAMPTON, ONTARIO CANADA
 DWG. NO. **89-06-011** REV.

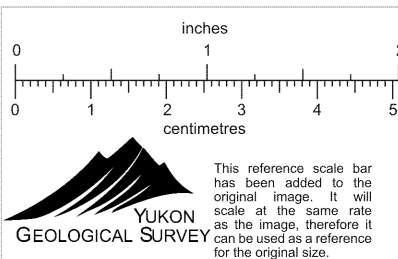




SECTION 13+50 E LOOKING WEST

LEGEND

-  HIGH GRADE ORE
-  LOW GRADE ORE
-  D.DRILL HOLE

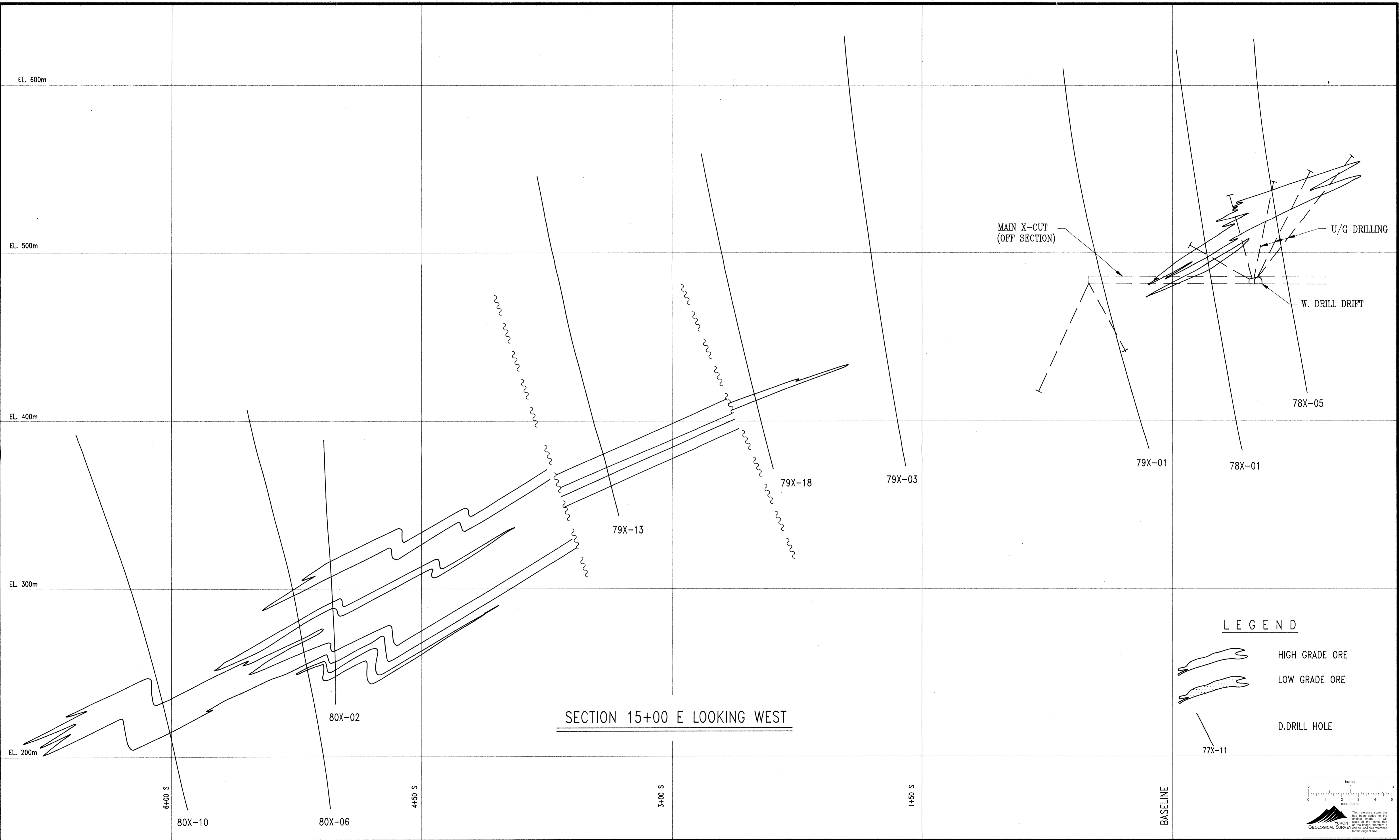


DWG. NO.	REFERENCE DRAWING	DWG. NO.	REFERENCE DRAWING	NO.	DESCRIPTION OF REVISION	DATE	BY	NO.	DESCRIPTION OF REVISION	DATE	NO.	APPROVED:

SCALE:	1:1000	DATE	
DESIGNED:			
DRAWN:	S.McG.	02/89	
CHECKED:			
APPROVED:	<i>[Signature]</i>		


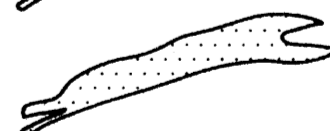

CURRAGH RESOURCES CORP.
DY DEPOSIT
 SECTION 13+50 E

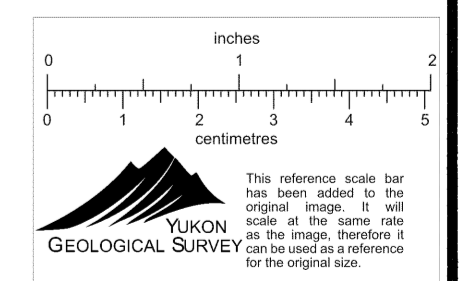
CANADIAN MINE DEVELOPMENT
 BRAMPTON, ONTARIO CANADA
 DWG. NO. **89-06-013** REV.



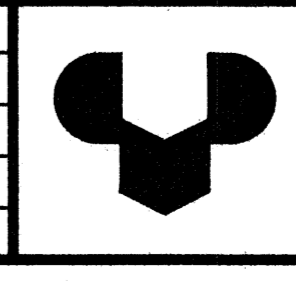
SECTION 15+00 E LOOKING WEST

LEGEND

-  HIGH GRADE ORE
-  LOW GRADE ORE
-  D.DRILL HOLE



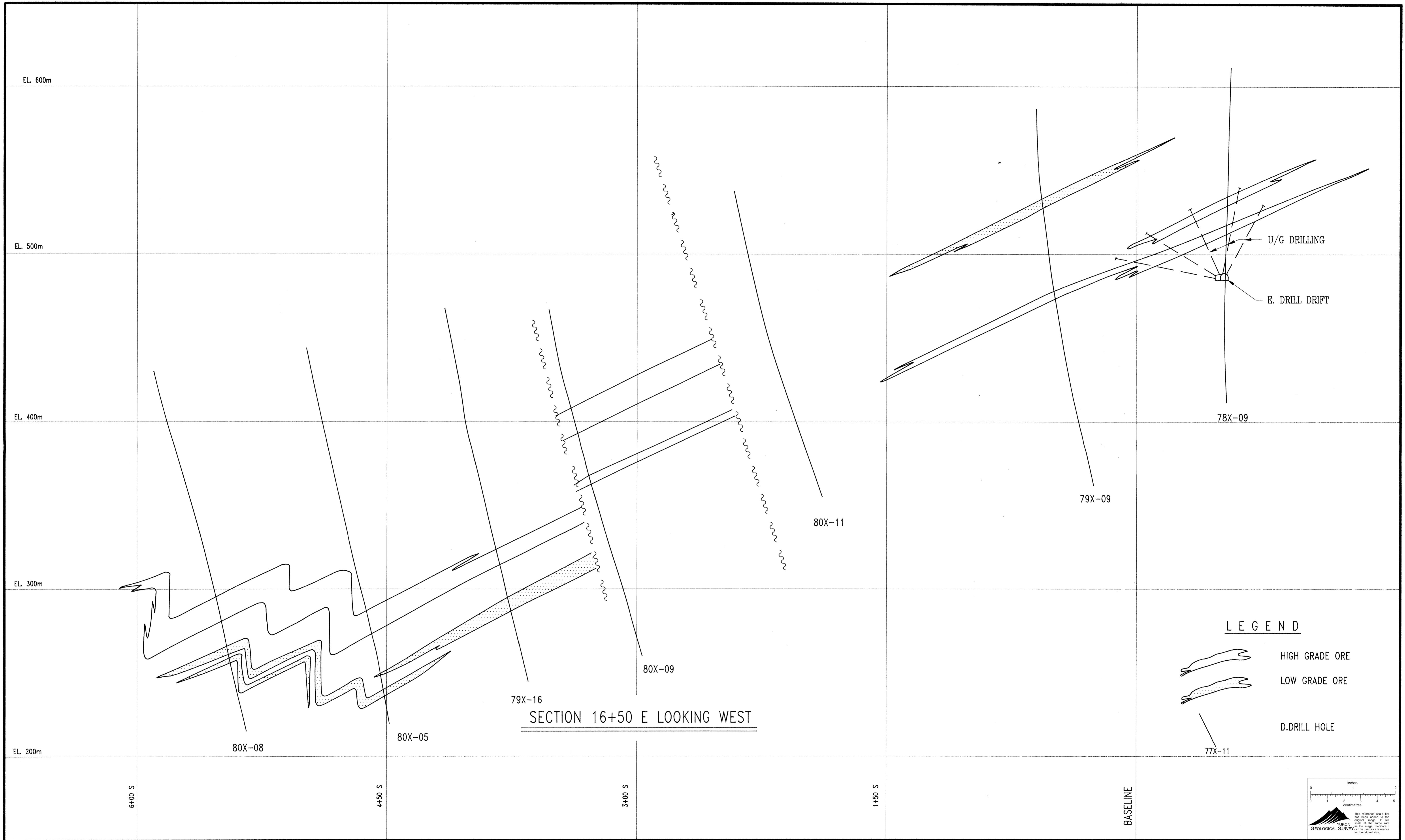
DWG. NO.	REFERENCE DRAWING	DWG. NO.	REFERENCE DRAWING	NO.	DESCRIPTION OF REVISION	DATE	BY	NO.	DESCRIPTION OF REVISION	DATE	NO.	APPROVED:



CURRAGH RESOURCES CORP.
DY DEPOSIT
SECTION 15+00 E

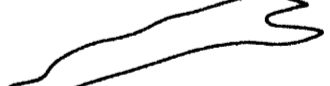


CANADIAN MINE DEVELOPMENT
BRAMPTON, ONTARIO CANADA
DWG. NO. **89-06-014** REV.

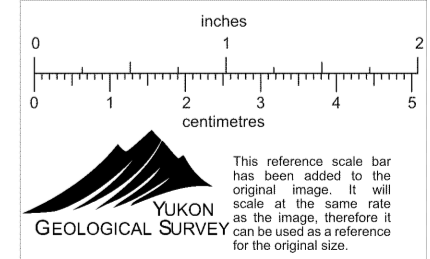
SCALE: 1:1000 DATE
DESIGNED:
DRAWN: S.McG DATE 02/89
CHECKED: [Signature]
APPROVED: [Signature]



SECTION 16+50 E LOOKING WEST

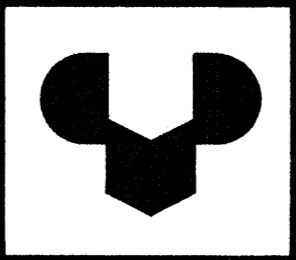
LEGEND

-  HIGH GRADE ORE
-  LOW GRADE ORE
-  D.DRILL HOLE



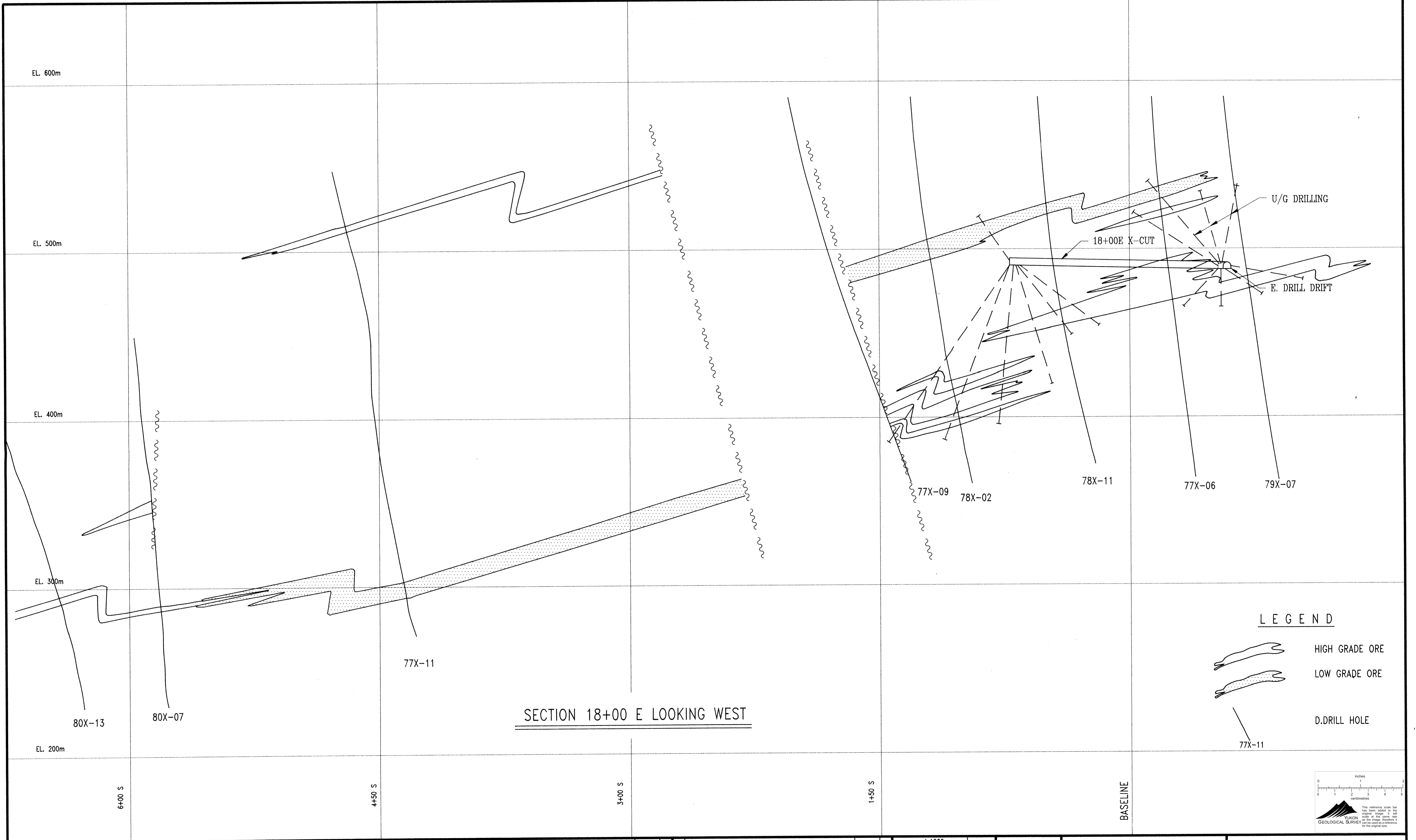
DWG. NO.	REFERENCE DRAWING	DWG. NO.	REFERENCE DRAWING	NO.	DESCRIPTION OF REVISION	DATE	BY	NO.	DESCRIPTION OF REVISION	DATE	NO.

SCALE:	1:1000	DATE:	
DESIGNED:			
DRAWN:	S.McG.	02/89	
CHECKED:			
APPROVED:			




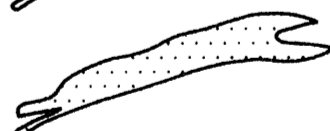

CURRAGH RESOURCES CORP.
DY DEPOSIT
SECTION 16+50 E

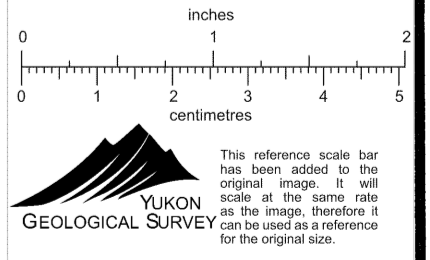
CANADIAN MINE DEVELOPMENT
BRAMPTON, ONTARIO CANADA
DWG. NO. 89-06-015
REV.



SECTION 18+00 E LOOKING WEST

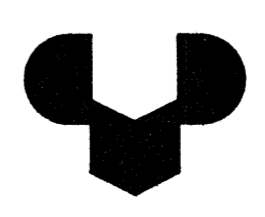
LEGEND

-  HIGH GRADE ORE
-  LOW GRADE ORE
-  D.DRILL HOLE



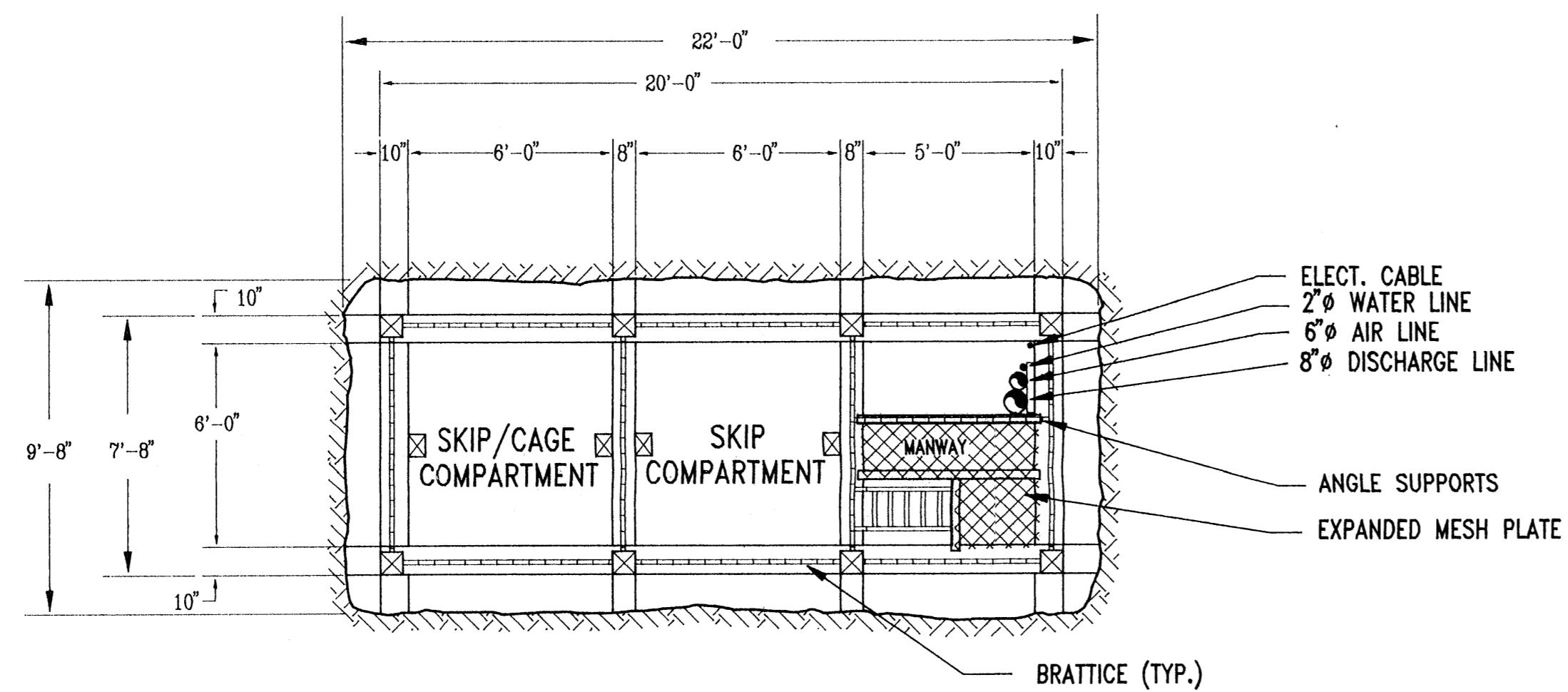
SCALE: 1:1000	DATE:
DESIGNED:	
DRAWN: S.McG	02/89
CHECKED:	
APPROVED:	

DWG. NO.	REFERENCE DRAWING	DWG. NO.	REFERENCE DRAWING	NO.	DESCRIPTION OF REVISION	DATE	BY	NO.	DESCRIPTION OF REVISION	DATE	NO.

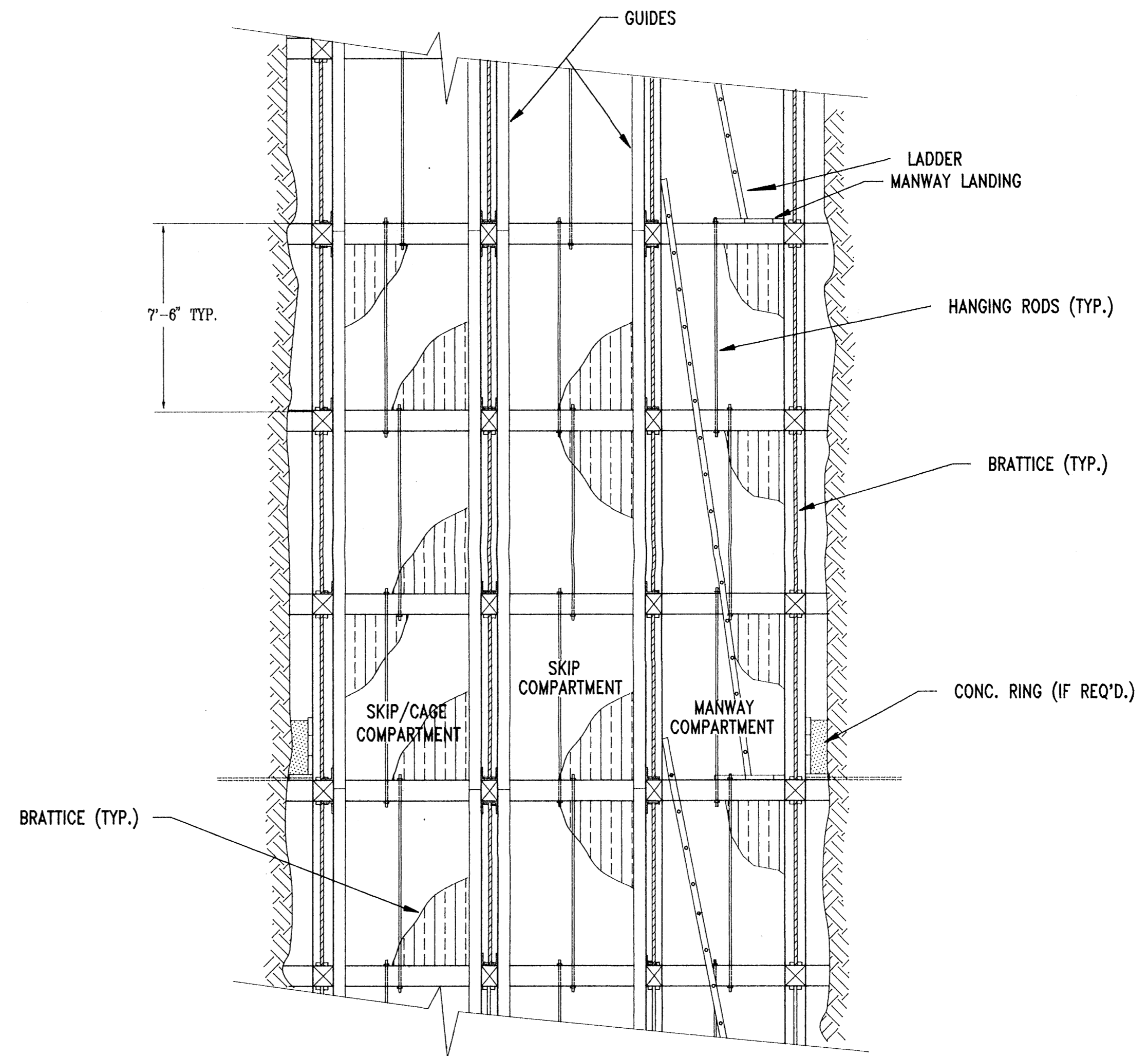


CURRAGH RESOURCES CORP.
DY DEPOSIT
SECTION 18+00 E

CANADIAN MINE DEVELOPMENT
BRAMPTON, ONTARIO CANADA
DWG. NO. 89-06-016 REV.

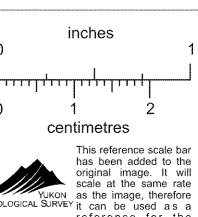


SHAFT PLAN

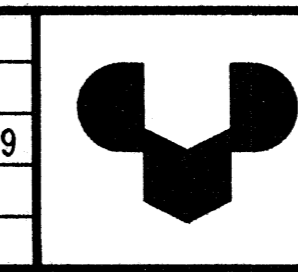


SHAFT SECTION

3 COMPARTMENT SHAFT - 2.29m (7.5') SET CENTERS
 MANWAY LANDINGS @ 3 SET INTERVALS
 TIMBER END & WALL PLATES - 250mm X 250mm (10" X 10")
 TIMBER DIVIDERS - 250mm X 200mm (10" X 8")
 TIMBER POSTS - 200mm X 200mm (8" X 8")
 COMPARTMENTS - FULL TIGHT LINING
 6 HANGING RODS/SET
 BEARING SETS @ 90m INTERVALS
 ROCK CATCHERS @ 6 SET INTERVALS
 WATER RINGS ABOVE EACH LEVEL & AS REQ'D.
 GUIDES - 6" X 8" NOMINAL X 22'-6" LG.
 GUIDES - DOUGLAS FIR SELECT (189B)
 SETS - BC FIR NO.1 STRUCTURAL



DWG. NO.	REFERENCE DRAWING	DWG. NO.	REFERENCE DRAWING	NO.	DESCRIPTION OF REVISION	DATE	BY	NO.	DESCRIPTION OF REVISION	DATE	NO.	APPROVED:



CURRAGH RESOURCES CORP.
 DY DEPOSIT
 SHAFT - PLAN & SECTION

CANADIAN MINE DEVELOPMENT
 BRAMPTON, ONTARIO CANADA
 DWG. NO. 89 - 06 - 021
 REV.