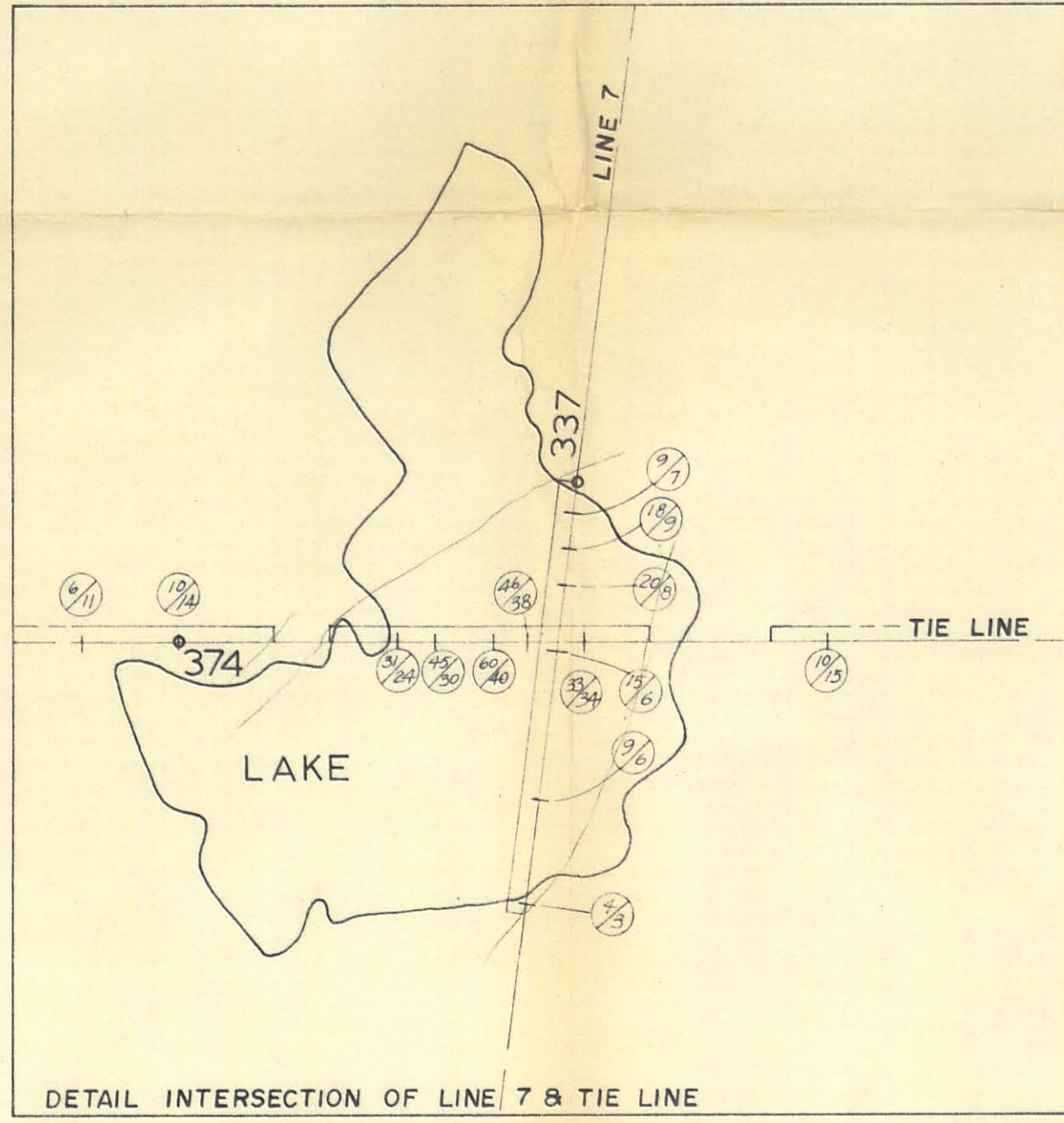


HEB E.M.



**LEGEND**

- 407 FIDUCIAL POINT
- ▭ TOTAL WIDTH OF ANOMALY
- ⊕ ANOMALY PEAK IN PHASE ppm QUAD. ppm
- ⊙ Anomalies with amplitude > 10

*Survey by: Noranda Limited, Vancouver, B.C.  
 Method: 700 Hz, Magnet 5000  
 Magnetometer: GEOMAG 2H-23  
 Battery: 24V  
 Frequency: 100 cycles/sec  
 Magnetometer: Noranda 2H-23 (under license)  
 Scale: 1:50,000  
 Date: 1965-1966*

KERR ADDISON MINES LTD., VANCOUVER, B.C.  
**FINLAYSON LAKE PROJECT**  
 ROSS RIVER, YUKON

**AIRBORNE EM SURVEY**

SCALE - 1 : 50,000 metres  
 DRAWN BY: P.H.  
 DATE: 005992  
 DATA BY:

*Map No. 6*