

E3020000

E3030000

E3040000

SAMPLE	TH.	AG.	CU.	PB.	ZN.	SB.	BI.
1292	TH. 4.0'	TR	0.5	.08	.25	.56	.06
1297	TH. 4.0'	TR	1.1	.15	.65	.38	.17
1294	NW 2.9'	OK	2.4	.41	1.77	.09	.59
1295	FW. 3.2'	TR	0.5	.09	.56	.43	.03
1289	TH. 4.0'	OR	1.0	.03	.31	.05	.51
1290	TH. 4.0'	TR	1.6	.08	.31	.13	.09
1277	NW 3.4'	OR	3.7	.13	1.44		
1280	FW. 3.4'	OR	28.8	.63	1.57		
1276	NW 3.4'	TR	.4	.08	.30		
1277	FW. 3.2'	TR	2.5	.10	.45		
1314	6.0'	TR					
1313	1.7'	TR	6.0	.67	.35	.05	.64
1290	FW. 3.6'	TR	TR	.11	.15		
1269	FW. 3.6'	TR	TR	.10	.18		
1316	7.7'	OR	6.1	.14	1.16	.10	.90
1317	6.0'	TR	1.4	.20	.15	.17	.05
1315	1.7'	TR	1.2	.43	.20	.05	.51
1318	2.4'	OR	1.7	.39	.40	.20	.65
1317	5.4'	TR	7.0	.39	.10	.10	.59
1320	6.0'	TR	.7	.04	TR	.08	TR
1284	TH. 4.0'	TR	TR	.03	.08	.28	.03
1283	TH. 4.0'	TR	.9	.14	3.13	3.47	1.18
1267	NW 3.7'	TR	TR	.06	.03	.10	.08
1268	FW. 3.0'	TR	.3	.06	.20		
1266	TH. 4.0'	TR	.1	.01	.03	.10	.04
1265	TH. 4.0'	TR	TR	.03	.03	.10	.03
1310	6.5'	TR	TR				
1309	3.6'	TR	.9	.09	.40	.94	.22
1280	NW 3.6'	TR	TR	.05	.03	.05	TR
1261	FW. 3.4'	TR	.8	.23	.71	.15	.59
1287	TH. 4.0'	TR	.5	.15	.09	.13	.14
1288	TH. 4.0'	OR	5.7	.51	2.07	.64	1.10
1312	8.5'	TR	TR				
1311	1.4'	TR	1.0	.34	6.40	2.40	3.31
1251	NW 3.4'	OR	16.9	.18	5.93	.07	.64
1252	FW. 3.6'	OR	.9	.29	.38	.07	.64
1285	TH. 4.0'	TR	.9	.42	.51	.41	.33
1286	TH. 4.0'	TR	1.4	.42	.51	.20	.17
1245	NW 4.1'	OR	5.7	.03	2.27	TR	1.81
1246	FW. 4.0'	OR	13.6	1.54	1.44	TR	.95
1255	TH. 4.0'	TR	TR	.03	TR	.07	TR
1254	TH. 4.0'	TR	TR	.03	.05	.09	.06
1259	6.5'	TR	TR	.03	.05	.07	.06
1258	6.5'	TR	TR	.05	.05	.07	.03
1240	NW 2.3'	TR	2.5	.44	TR	TR	.17
1241	C 2.8'	TR	1.2	.30	.45	TR	.17
1242	FW. 3.6'	TR	.1	.24	.20	TR	.08
1306	4.0'	TR	TR				
1305	4.3'	TR	TR	.15	TR	.08	.14
1304	1.5'	TR	TR	.16	.03	.08	.06
1237	NW 3.3'	TR	.3				
1238	FW. 3.8'	TR	TR				
1233	TH. 4.0'	TR	TR	.01	.10	TR	.03
1232	TH. 4.0'	TR	TR	.03	.05	TR	TR
1297	4.5'	TR	TR				
1296	6.0'	TR	TR				
1293	3.6'	TR	TR				
1225	2.5'	TR	2.2	1.50	4.24	.51	2.53
1224	2.0'	TR	TR	.49	.25	.17	.17
1214	NW 6.8'	TR	TR	.19	.05	.12	TR
1215	FW. 0.8'	OR	5.7	.39	.74	.40	.78
1300	3.2'	TR	.1	.11	.05	.10	.20
1301	5.8'	TR	.1				
1230	TH. 4.0'	TR	.3	.23	TR	.07	.03
1231	TH. 4.0'	TR	TR	.05	TR	TR	TR
1299	7.0'	TR	TR				
1298	8.6'	TR	TR				
1227	3.8'	OR	51.0	1.41	6.55	.28	3.81
1226	3.0'	TR	5.0	.81	2.22	.31	1.50
1302	4.2'	TR	.1	.04	.03	.08	TR
1303	4.0'	TR	TR				
10973	NW 1.9'	TR	TR	.19	.20	.02	TR
10972	C 2.8'	TR	1.9	1.02	.65	.14	.42
10971	FW. 1.7'	TR	7.3	2.27	2.90	.28	1.58

SAMPLE	TH.	AG.	CU.	PB.	ZN.	SB.	BI.
1219	TH. 4.0'	TR	TR	.05	1.01	.09	.31
1218	TH. 4.0'	TR	TR	.09	.28	.05	.09
1213	TH. 2.9'	TR	TR				
1212	4.0'	OR	2.6	.06	1.36	.14	.78
1210	4.0'	OR	18.3	.08	5.52	.05	3.59
1209	4.0'	OR	61.7	.05	6.95	.05	4.14
1208	5.0'	OR	12.8	.03	TR		.81
1207	4.0'	TR	1.6				
10967	4.4'	TR	19.1	.80	.81	.19	1.11
10968	3.7'	TR	1.1	.26	.15	.08	.11
1216	TH. 4.0'	TR	TR	.08	.10	TR	.03
1217	TH. 4.0'	TR	TR	.14	.15	.12	.03
1325	2.5'	TR	TR				
1324	4.4'	OR	4.8	.05	2.98	TR	1.74
1323	8.0'	OR	26.8	.04	10.85	TR	6.10
1322	5.4'	OR	8.8	.03	2.75	TR	1.71
1321	6.6'	TR	3.0				
10927	NW 3.0'	TR	10.0	.84	3.04	.19	2.00
10928	NW 3.0'	TR	.7	.45	.30	.05	.25
10919	1.5'	TR	TR	.04	.20	.05	.08
10920	2.5'	OR	22.2	.12	6.75	.21	3.80
10921	1.5'	OR	61.8	.12	13.68	.42	9.56
10922	3.5'	OR	34.4	.15	9.07	.05	6.24
10923	6.2'	TR	6.5	.08	.48	.03	.33
10924	4.7'	TR	4.0	.17	.25	.05	.20
10914	NW 1.9'	TR	15.1		.81		.58
10917	C 3.1'	TR	0.3		.20		TR
10918	FW. 3.0'	TR	5.9	2.24	1.01		.89
10919	NW 3.4'	TR	13.2	.27	.28	.42	.36
10915	FW. 6.0'	TR	TR				

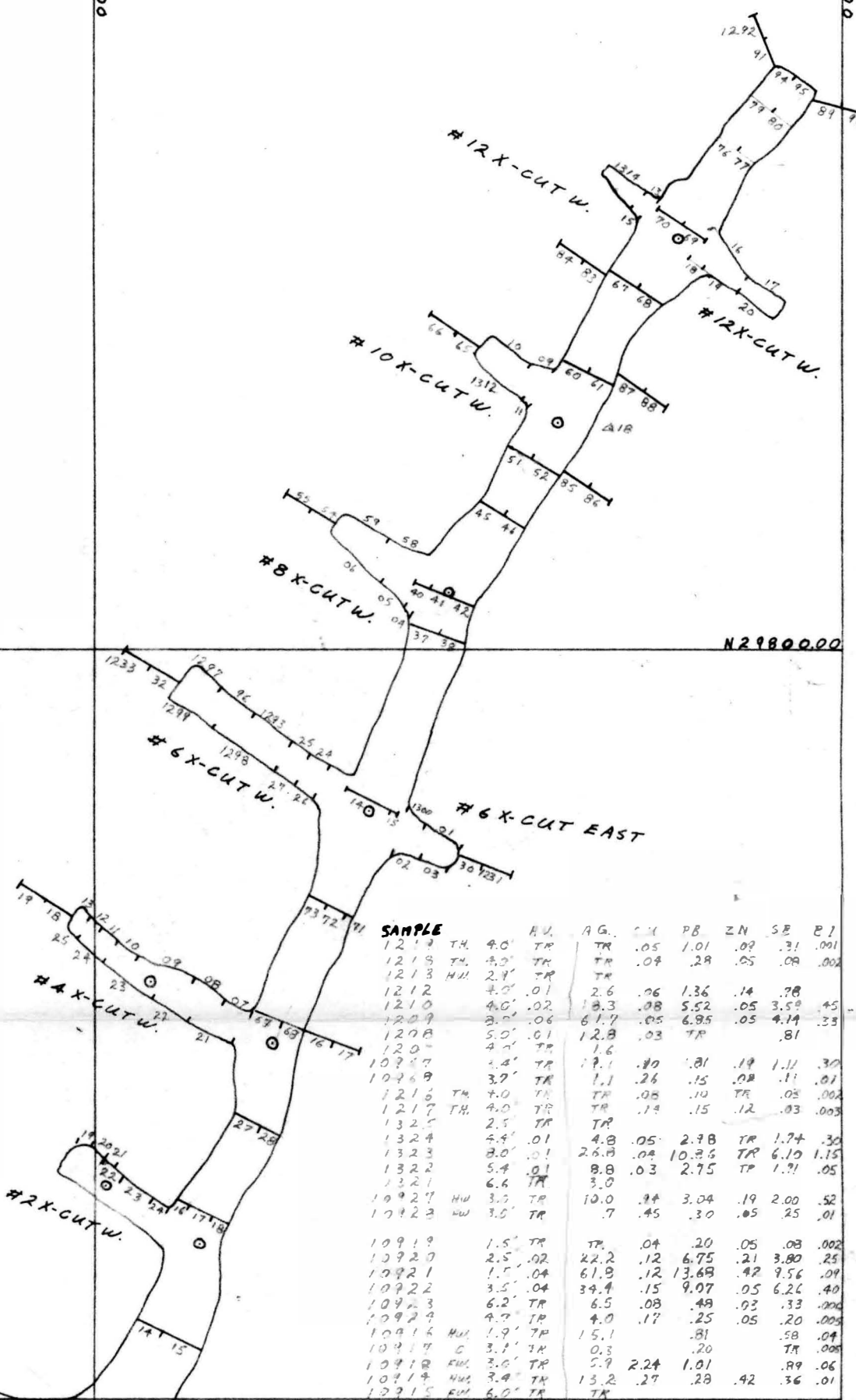
NO. 1 ADIT

N2970000

SAMPLE	TH.	AG.	CU.	PB.	ZN.	SB.	RI.
10934	NW 1.8'	TR	.2	1.54	.28	.10	.22
10933	3.5'	OR	8.6	.45	.30	.09	1.28
10932	0.9'	TR	5.6	3.65	2.32	.14	1.25
10931	1.5'	TR	TR	.36	.10	.10	.22
10939	NW 4.4'	OR	21.4	.05	4.23	.14	2.53
10938	FW. 5.4'	TR	2.7	.08	.98	.24	.72
10940	TH. 4.0'	OR	.8	.47	.15	.03	
10941	TH. 4.0'	TR	TR	.36	.13	.14	
1329	2.0'	OR	31.5	.03	10.91	.03	5.90
1328	4.0'	TR	.8	.03	.38	.05	.65
1327	4.6'	TR	.7	.35	1.41	.09	1.01
1326	2.9'	OR	7.0	2.27	4.49	.09	2.47
10955	TH. 4.0'	TR	.5	.01	.30	TR	
10954	TH. 4.0'	TR	.7	.03	.18	.09	
1205	3.2'	TR	TR				
1204	4.4'	OR	8.9				
1203	4.0'	OR	2.3				
1202	5.0'	TR	.4				
1201	4.0'	TR	TR				
10943	NW 4.1'	OR	7.2	1.42	1.23	.05	
10942	FW. 2.7'	OR	7.4	.55	.05	.09	
10945	NW 2.7'	OR	.2	.34	.18	.14	
10944	FW. 5.4'	TR	TR	.22	.13	.05	
1332	7.5'	TR	3.3	.06	3.39	.08	2.59
1331	5.3'	TR	1.2	.01	.71	.08	1.01
1330	6.4'	TR	TR				
10950	NW 3.0'	TR	TR	.21	.03	.14	
10947	FW. 3.8'	TR	TR	.15	.05	.07	
10959	TH. 4.0'	TR	TR	.05	.05	.05	
10958	TH. 4.0'	TR	.1	.01	.03	.14	
10966	3.9'	TR	.5				
10965	7.8'	OR	7.5	.14	8.59	TR	
10964	4.2'	OR	.5				
10963	8.0'	TR	TR				
10962	7.0'	TR	.1				

#3 X-CUT W.

#1 X-CUT W.



006069

PESO SILVER MINES LTD.(N.P.L.)
MAYO M.D., YUKON TERRITORY
ASSAY PLAN #1 DRIFT
SCALE: 1/IN. = 20 FT.
BY: W.S.READ
MAY 9, 1962