

ADDITIONAL
SOIL PROFILE
L-510E 510N

PELLEY CLAIM GROUP

006087

6 cm.	Moss			
9 cm.	Humus, Peat w/ secondary roots. Stain fingers black	510E-510N 1SP	Pb 1670	Zn 1340
2 cm.	Volcanic Ash	510-510N 2SP	56	70
30 cm.	Permafrost. Black clay. Water seeping in	510-510N 3SP	3650	5900

L 510 G30N

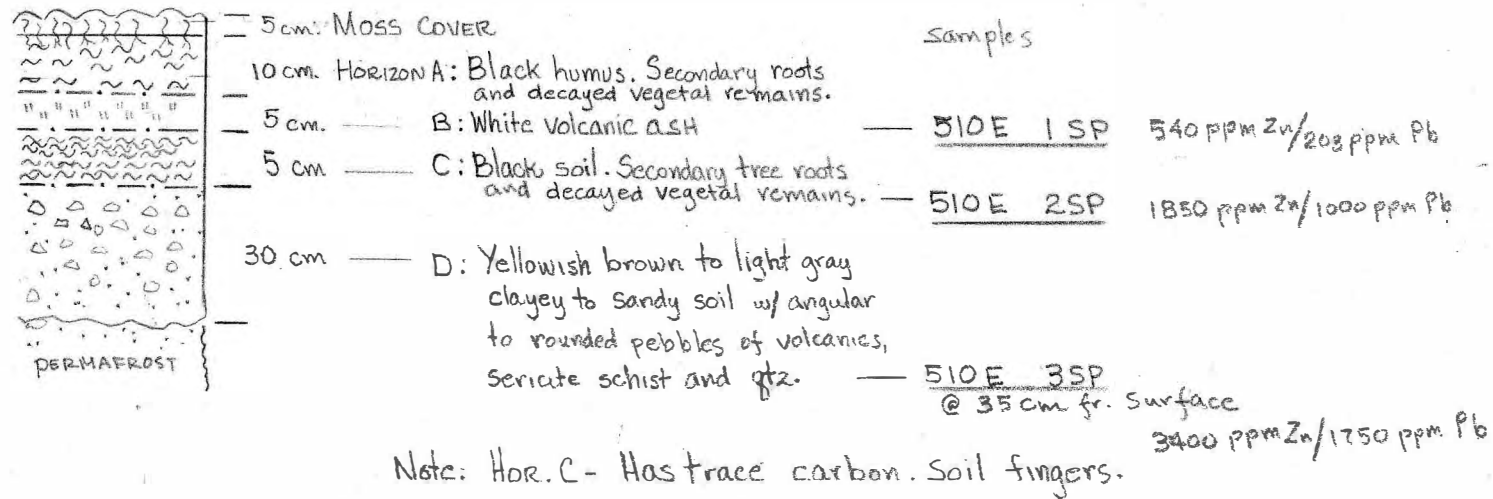
7 cm.	Moss, Humus			
2 cm.	Volc. Ash	510E G30N -1SP	Pb 140	Zn 310
2 cm.	Brown humic soil	510E G30N -2SP		
30 cm.	Greenish to light gray clayey soil w/ chlorite phyllite, sericite phyllite; basalt	510E G30N -3SP	820	760

B-2600N 1250W

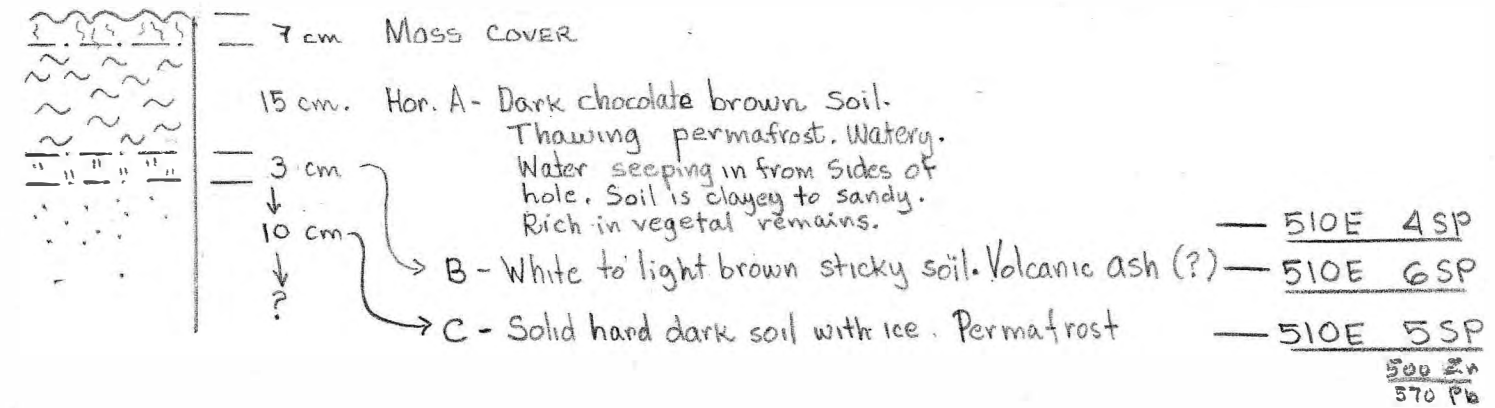
7 cm.	Humus, grass, weeds Sandy cover.			
10 cm.	Light gray sand w/ secondary roots	2600N 1250W 1SP		
2 cm.	Volcanic Ash - w/ orangy color	2600N 1250W 2SP		
35 cm.	Sandy soil light gray w/ some limonite.	2600N 1250W 3SP		

SOIL PROFILE PELLY CLAIM

L-510E 570N

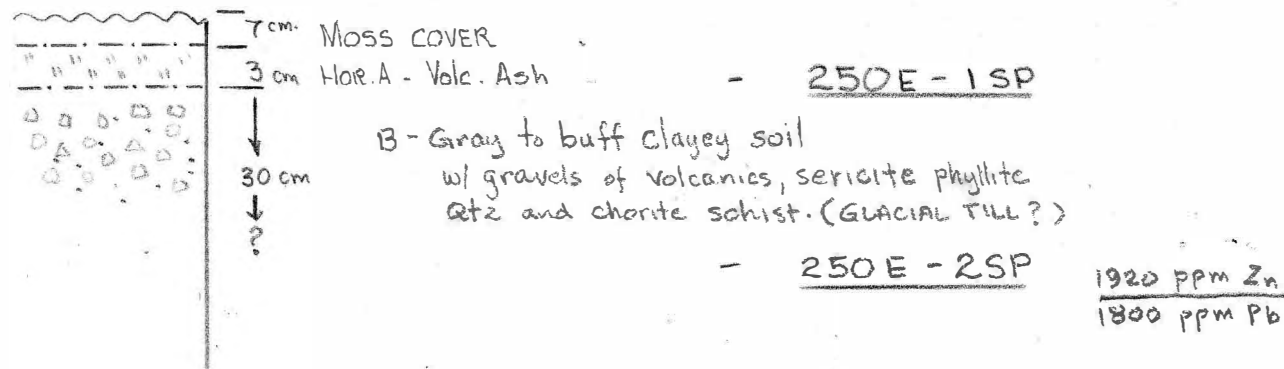


L-510E 2010N

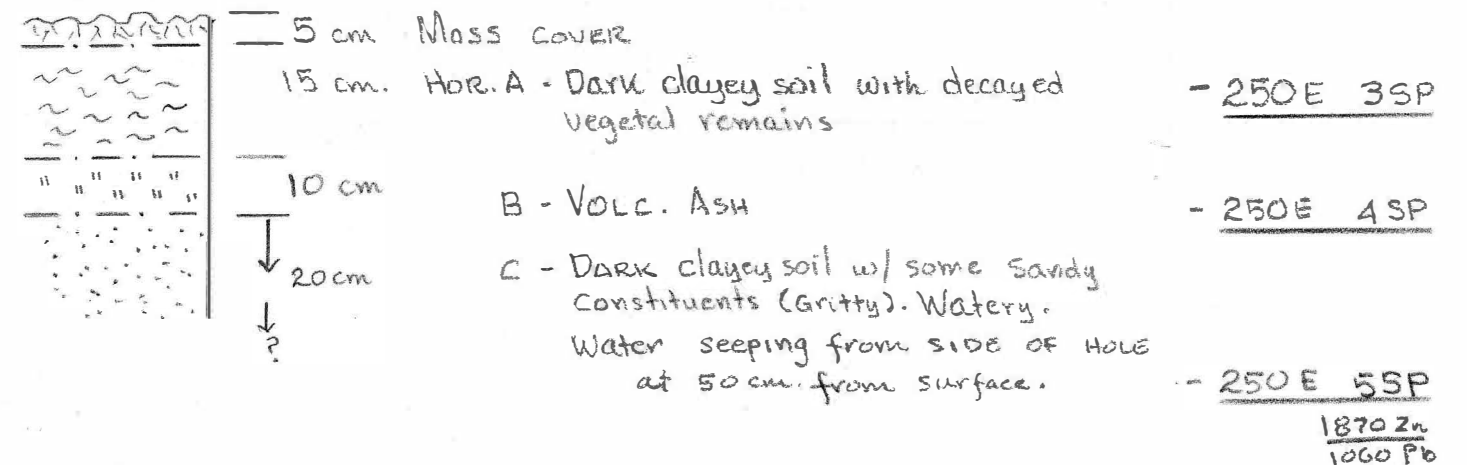


Note: Horizon B is not easily recognizable except on fresh cuts on hole sides.

L-250E 270N



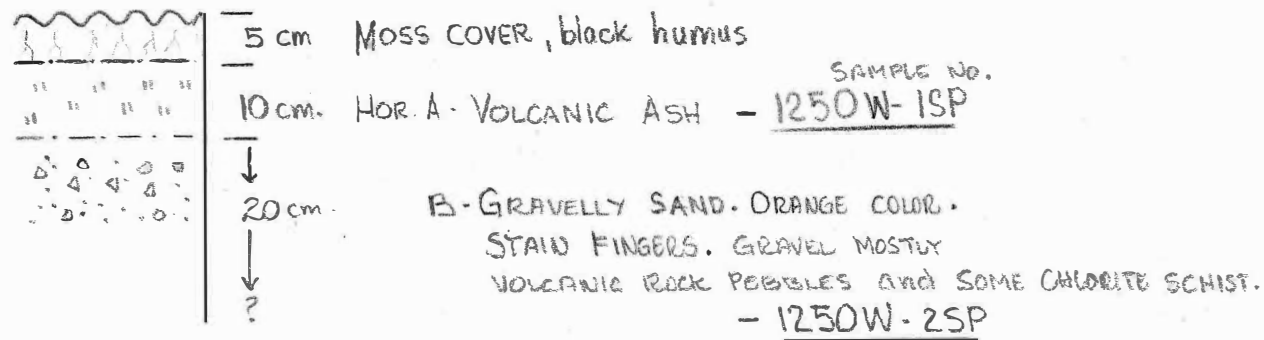
L-250E 240N



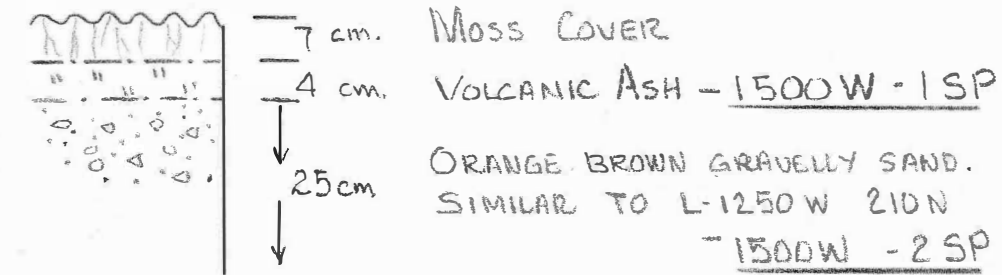
N.B. VERTICAL DISTANCES NOT TO SCALE

SOIL PROFILE PELLY CLAIM

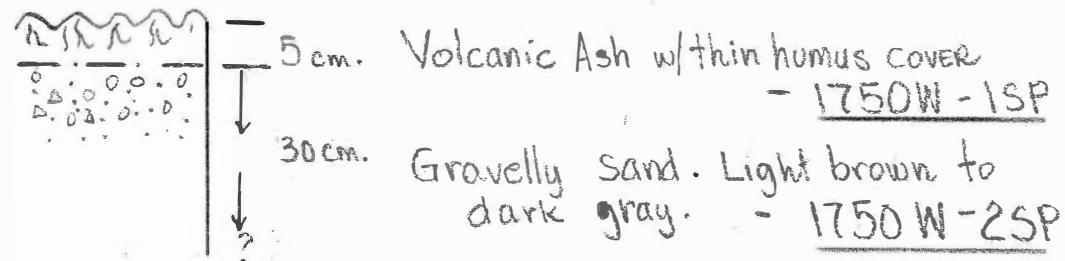
L-1250 W 210 N



L-1500 W - 450 N (FLAT GROUND)



L-1750 W - 90 N (POPLARS; DRY GROUND)



STREAM SEDIMENTS

(FOR LOCATIONS - SEE AERIAL PHOTO OVERLAY)

- PC-1 - creek north bank. Water seepage at base of Pelly slob. Sample dark gray clayey material. Some decayed organic matters. 760 ppm Zn
27 ppm Pb
- PC-2 - stream sediments. Sandy. L-1000 W 2500 N
- PC-3 - stream sediments. Sandy w/ silts. L-750 W 2130 N
- PC-4 - " " . Silty w/ much organic matters. 1710 N 210 W
- PC-5 - " " . Silty w/ much organic matters Near swamp at 250E 2050 ppm Zn
800 ppm Pb

N.B. VERTICAL DISTANCES NOT TO SCALE