

Cretaceous

+++ Anvil Dyke Suite= diorite, quartz- feldspar porphyry

▧ Anvil Plutonic Suite= quartz monzonite, granodiorite

Devonian to Permian

▽ Anvil Range Group basalt

▨ Earn and Anvil Range Groups= shale, chert, chert conglomerate

late Hadrynian to early Ordovician

▨ Menzie Creek Volcanic Unit= basalt

▨ 5 BCD= calcareous phyllite, metabasite, chloritic phyllite

▨ 5 A= graphitic phyllite

▨ 3 DC= calc-silicate, metabasite

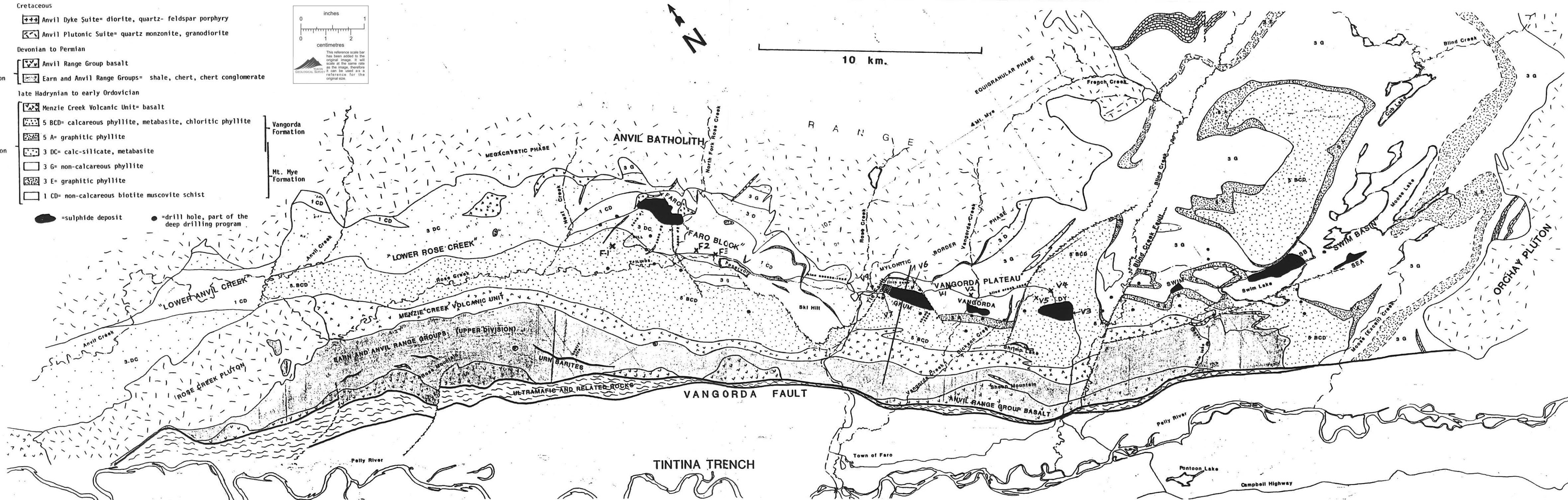
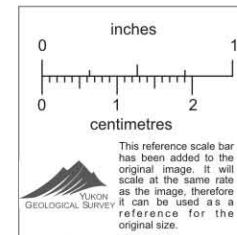
▨ 3 G= non-calcareous phyllite

▨ 3 E= graphitic phyllite

▨ 1 CD= non-calcareous biotite muscovite schist

● =sulphide deposit

● =drill hole, part of the deep drilling program



GEOLOGIC MAP OF THE ANVIL DISTRICT

006180