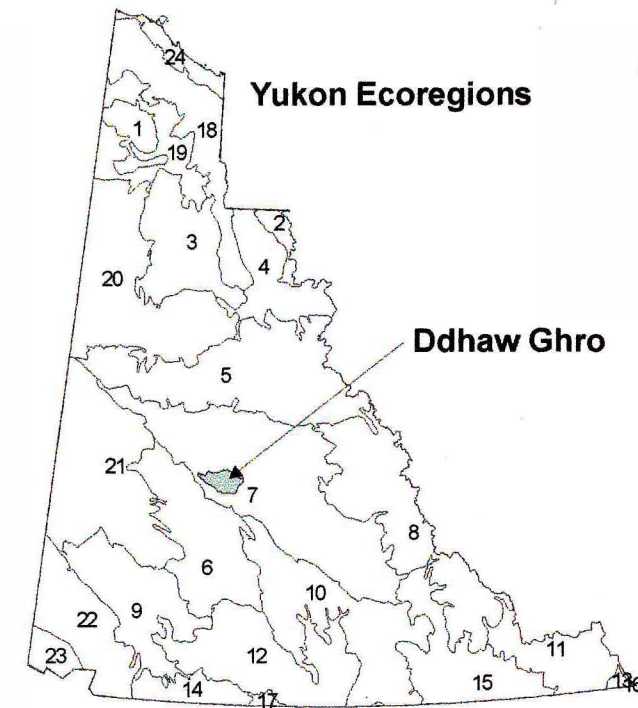
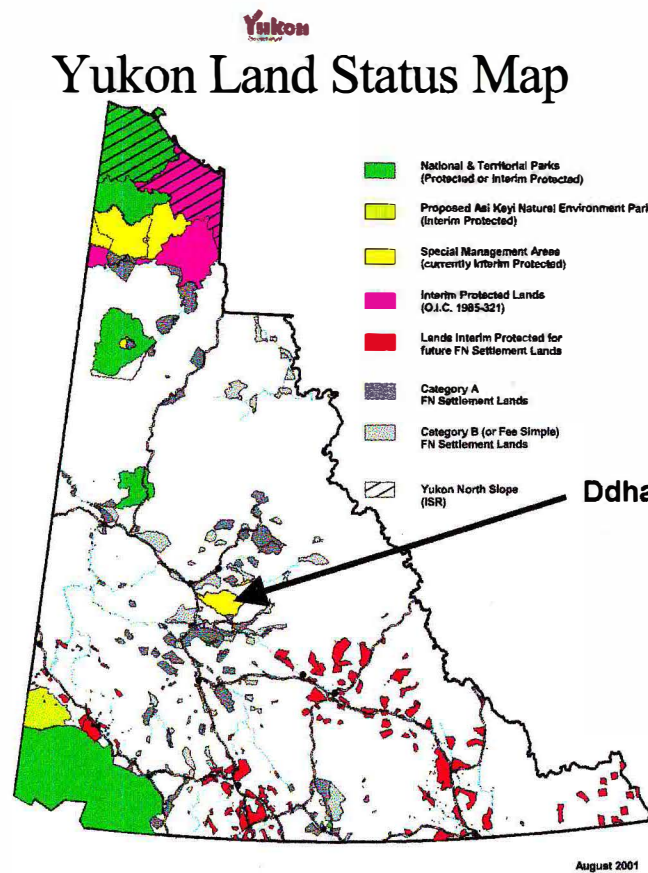
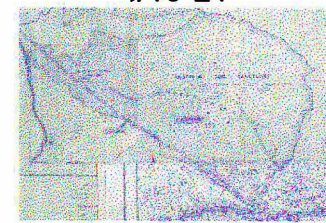


Ddhaw Ghro SMA



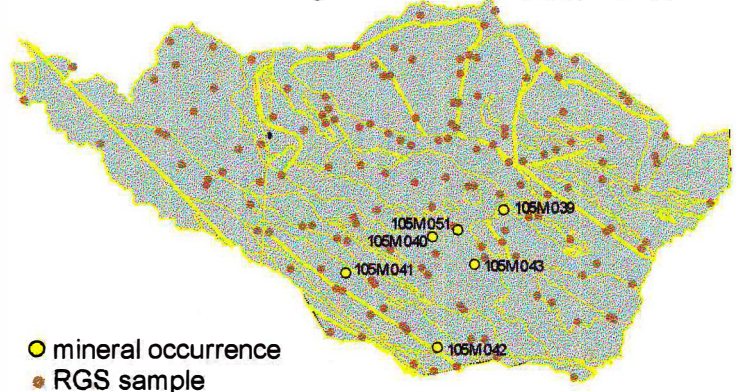
| Number | Name |
|--------|-------------------------------|
| 1 | Old Crow Flats |
| 2 | Fort MacPherson Plain |
| 3 | Eagle Plains |
| 4 | Peel River Plateau |
| 5 | Mackenzie Mountains |
| 6 | Yukon Plateau-Central |
| 7 | Yukon Plateau-North |
| 8 | Selwyn Mountains |
| 9 | Ruby Ranges |
| 10 | Pelly Mountains |
| 11 | Hyland Highland |
| 12 | Yukon Southern Lakes |
| 13 | Muskwa Plateau |
| 14 | Yukon-Stikine Highlands |
| 15 | Liard Basin |
| 16 | Northern Alberta Uplands |
| 17 | Boreal Mountains and Plateaus |
| 18 | British-Richardson Mountains |
| 19 | Old Crow Basin |
| 20 | North Ogilvie Mountains |
| 21 | Klondike Plateau |
| 22 | Saint Elias Mountains |
| 23 | Mount Logan |
| 24 | Yukon Coastal Plain |

Proposed McArthur Ecological Reserve #10-21



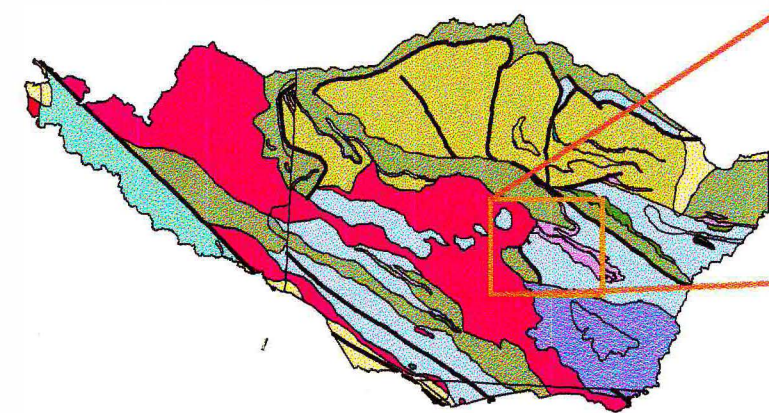
-MINFILE map notation since 1972
 -Withdrawn from disposition August 1997
 -Withdrawal renewed through August 2005
 -2 regional exploration programs
 -No active quartz or placer claims, or crown grants

Geochemistry and Mineral Occurrences

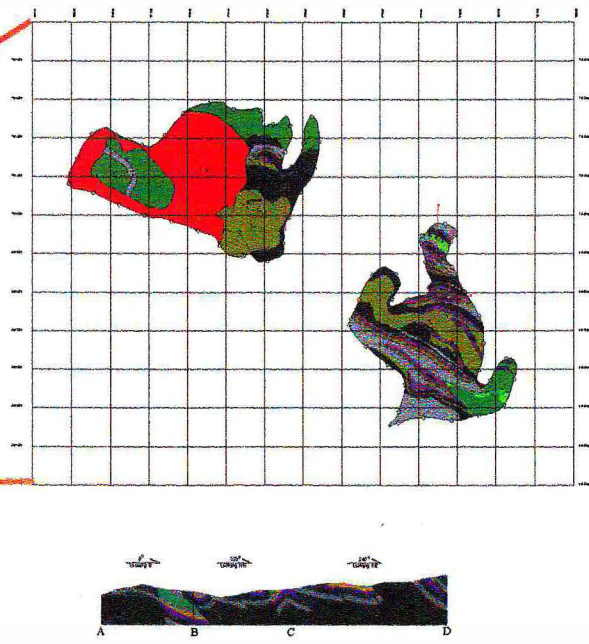


| NUMBER | NAME | STATUS | TYPE |
|----------|-----------------|-----------|---------|
| 105M 039 | Sidellip | showing | skarn |
| 105M 040 | Great Horn | prospect | skarn |
| 105M 041 | Rain | uncertain | unknown |
| 105M 042 | Hotspring | showing | vein |
| 105M 043 | Lost Wemecke Cu | uncertain | unknown |

Regional Geology



Regional (1:250,000 scale) geology by Roots, 1996
 Yukon Digital Geology Compilation by Gordey, 2000



Field Season 2000

- 2 geologists
- 2 fly camps
- helicopter support from Mayo
- 1:20,000 scale mapping, sampling, and prospecting