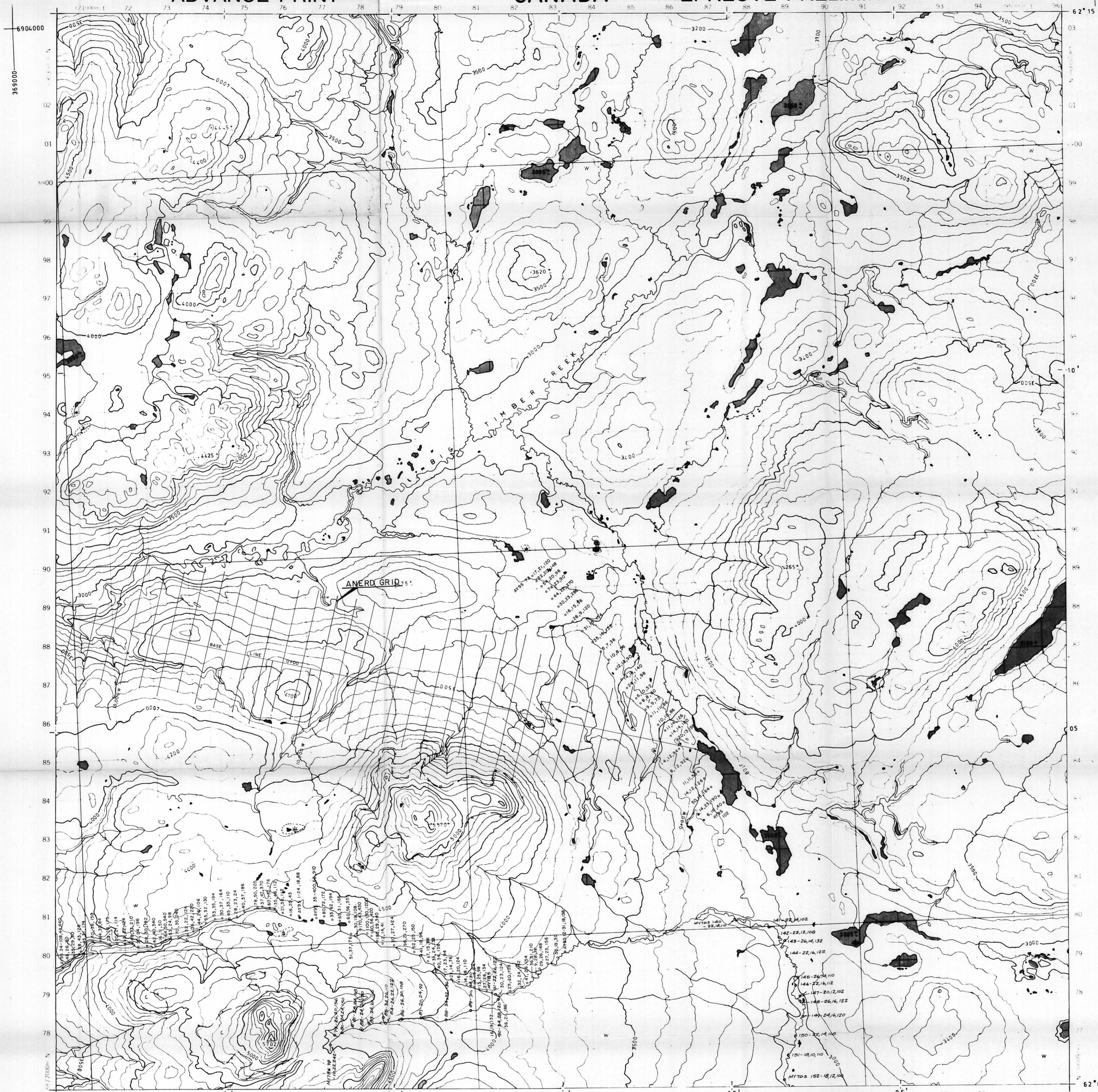


ADVANCE PRINT

CANADA

ÉPREUVE PRÉLIMINAIRE

105 J/3



LEGEND:

GEOCHEMICAL SAMPLE SITES

- SOIL
- SILT
- x ROCK

152-18,12,100 SAMPLE NUMBER - Cu, Pb, Zn (analysis in parts per million)

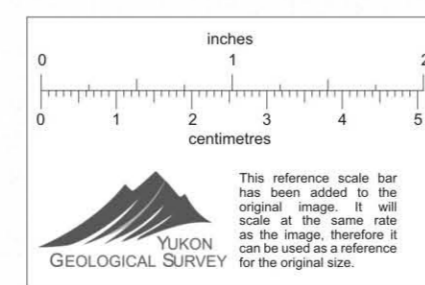
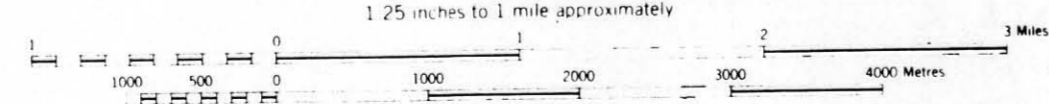
PRODUCED BY SURVEYS AND MAPPING BRANCH,
DEPARTMENT OF ENERGY, MINES AND RESOURCES,
OTTAWA, 1971, FROM PHOTOGRAPHS TAKEN IN 1968.

CONTOUR INTERVAL 100 FEET

YUKON TERRITORY

SCALE 1:50,000 ECHELLE

1:25 miles to 1 mile approximately



ÉTABLI PAR LA DIRECTION DES LEVÉS ET DE LA
CARTOGRAPHIE, MINISTÈRE DE L'ÉNERGIE, DES
MINES ET DES RESSOURCES, OTTAWA, EN 1971,
D'APRÈS DES PHOTOGRAPHES PRISES EN 1968.

EQUIDISTANCE DES COURBES 100 PIEDS

CYPRUS ANVIL MINING CORPORATION

MACMILLAN PROJECT

GEOCHEMICAL VALUES MAP

Cu, Pb, Zn

REVISED:
SEPT. 1979/rwr

006288

NTS: 105-J-3

DRAWN BY:WR/rwr

DATE: FEB., 1978