

PROVISIONAL MAP

105 G/12

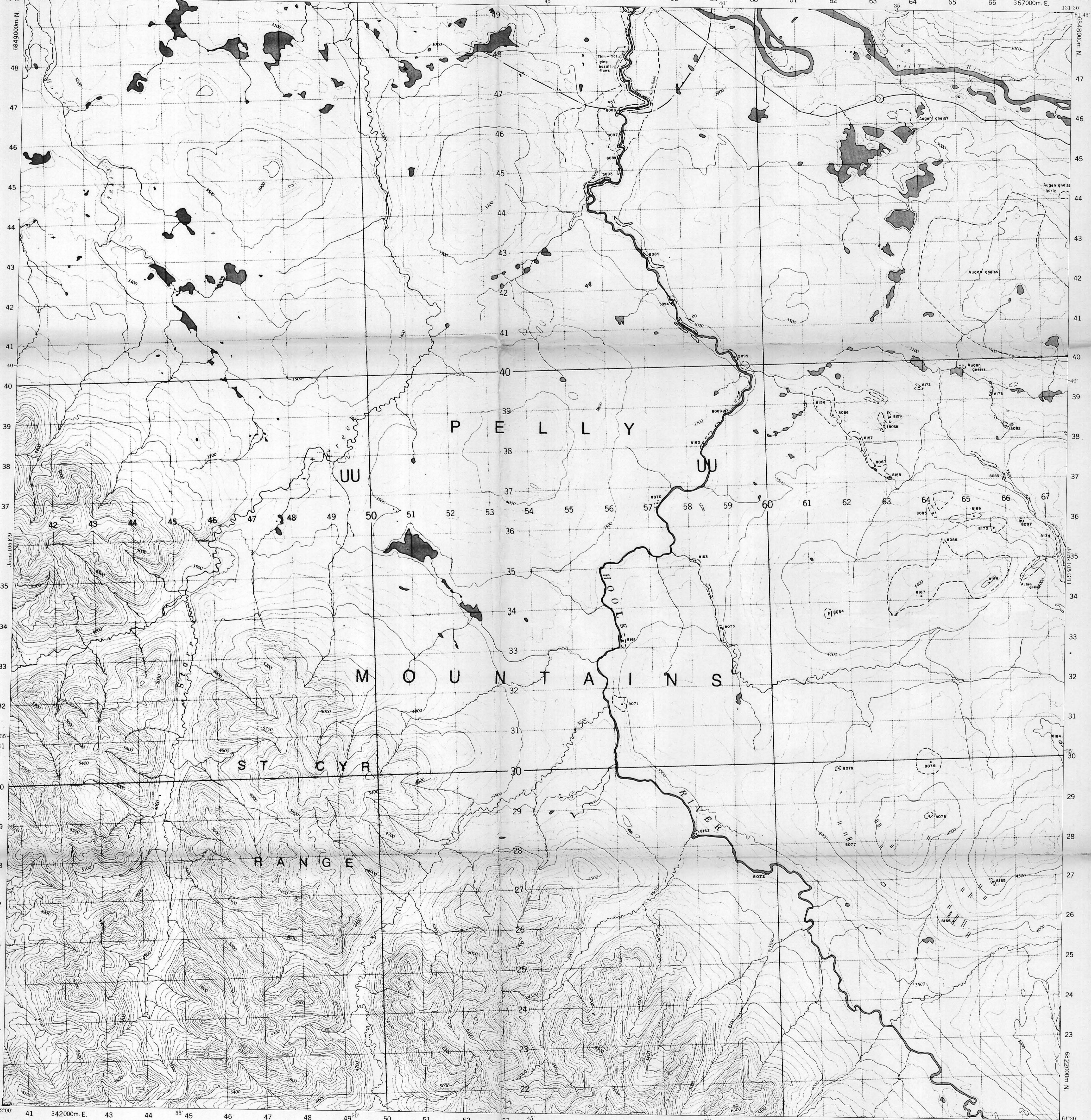
1:50,000

CANADA

EDITION 1

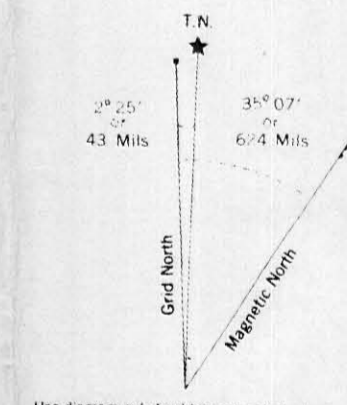
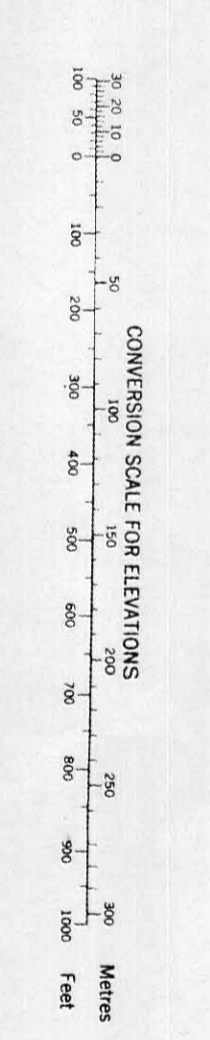
CARTE PROVISOIRE

105 G/12

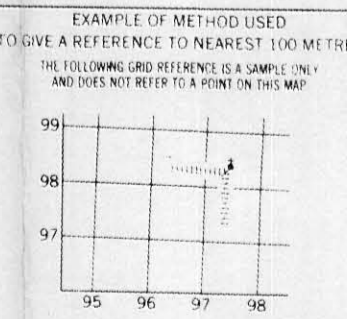
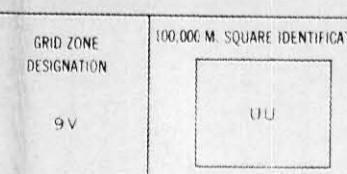


Refer to this map as:

| | |
|-------------|----------|
| 105 G/12 | 1:50,000 |
| SERIES A722 | |



ONE THOUSAND METRE UNIVERSAL TRANSVERSE MERCATOR GRID ZONE 9



REFERENCE POINT

EXAMPLE: Read number on grid line immediately to left of point (column number) and number on the horizontal grid line immediately below point (row number) and add 50 to the column number and 50 to the row number to give the nearest grid reference.

EXAMPLE: MILITARY GRID REFERENCE: 515864

Nearest smaller grid reference: 515860 (about 5.5 metres)

Compiled by the SURVEYS AND MAPPING BRANCH DEPARTMENT OF ENERGY, MINES AND RESOURCES. Produced by the MAPPING AND CHARTING ESTABLISHMENT, DEPARTMENT OF NATIONAL DEFENCE. Information published by the Department of Energy, Mines and Resources, Ottawa.

Carte has been obtained from the Map Distribution Office, Department of Energy, Mines and Resources, Ottawa.

© Canada Copyright reserved 1971

Notes:

1. Contour interval: 100 feet (30 metres).

2. Contour interval: 200 feet (60 metres).

3. Contour interval: 300 feet (90 metres).

4. Contour interval: 400 feet (120 metres).

5. Contour interval: 500 feet (150 metres).

6. Contour interval: 600 feet (180 metres).

7. Contour interval: 800 feet (240 metres).

8. Contour interval: 1000 feet (300 metres).

9. Contour interval: 1200 feet (360 metres).

10. Contour interval: 1500 feet (450 metres).

11. Contour interval: 2000 feet (600 metres).

12. Contour interval: 3000 feet (900 metres).

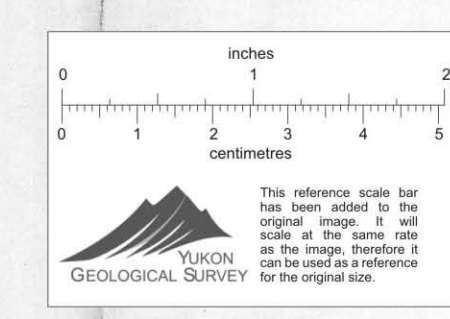
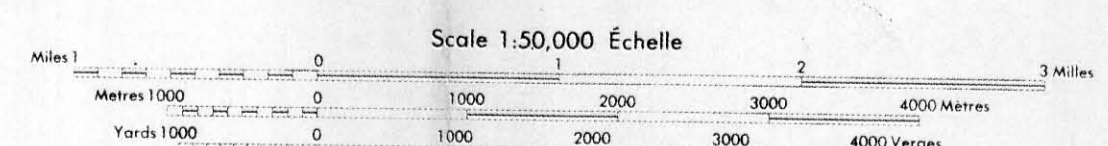
13. Contour interval: 4000 feet (1200 metres).

14. Contour interval: 5000 feet (1500 metres).

15. Contour interval: 6000 feet (1800 metres).

16. Contour interval: 8000 feet (2400 metres).

17. Contour interval: 10000 feet (3000 metres).



This Provisional Map is reproduced by a standard map projection of the Survey and Mapping Branch.

Some names on this map are not yet official. Corrections or additions are invited by the Survey and Mapping Branch.

CONTOUR INTERVAL: 100 FEET

Échelle: 1:50,000

Projection: North American Datum 1917

Transverse Mercator Projection

Cette carte provisoire reproduit une carte topographique au moyen d'une projection standard.

Certains noms sur cette carte ne sont pas encore officiels. La Direction des cartes et de la cartographie invite les cartes et de la cartographie à apporter des corrections et des additions.

ÉCHELLE: 1:50,000

Projection: Datum Nord-Américain de 1917

Projection Transverse de Mercator

Reproduit par le BUREAU DES CARTES ET DE LA CARTOGRAPHIE, MINISTÈRE DE L'ÉNERGIE, DES MINES ET DES RESSOURCES. Publié par le SERVICE DE LA CARTOGRAPHIE, MINISTÈRE DE LA DÉFENSE NATIONALE. Remarque: un plan en 1967 imprimé en 1971.

Ces cartes sont au dépôt au Bureau de distribution des cartes, Ministère de l'Énergie, des Mines et des Ressources, Ottawa.

© Canada 1971. Tous droits réservés.

105 G/12

EDITION 1

| | |
|--|--------------|
| CYPRUS ANVIL MINING CORPORATION | |
| REVISED: | 006289 |
| NTS: | 105-G-12 |
| DRAWN BY: | clc / rwr |
| DATE: | DEC. 5, 1979 |