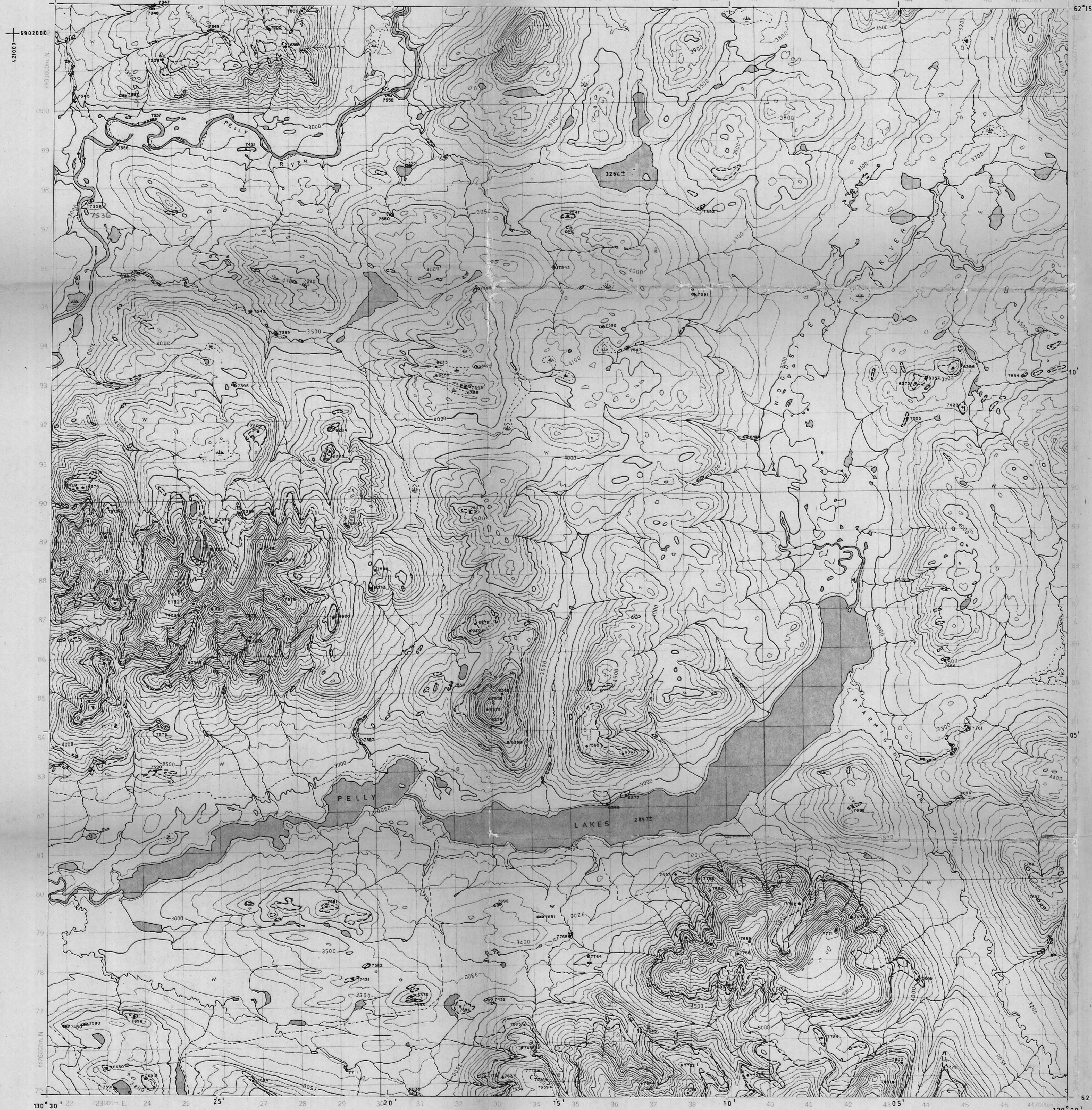


ADVANCE PRINT

CANADA

ÉPREUVE PRÉLIMINAIRE

105 J/1



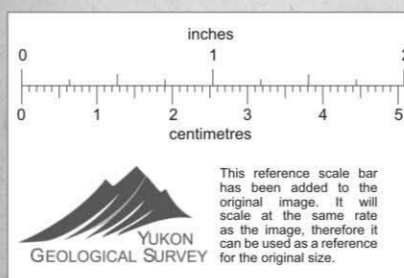
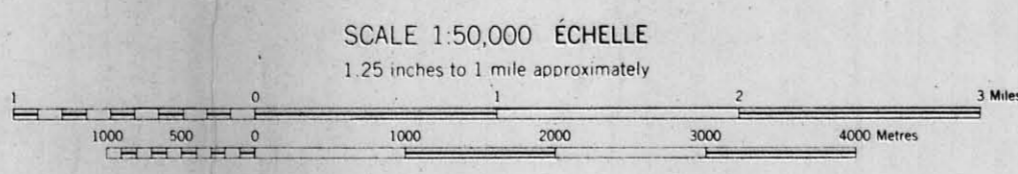
6870000
4210000

PRODUCED BY SURVEYS AND MAPPING BRANCH,
DEPARTMENT OF ENERGY, MINES AND RESOURCES,
OTTAWA, 1971. FROM PHOTOGRAPHS TAKEN IN 1968.
CONTOUR INTERVAL 100 FEET

PELLY LAKES
YUKON TERRITORY

006327

ÉTABLI PAR LA DIRECTION DES LEVÉS ET DE LA
CARTOGRAPHIE, MINISTÈRE DE L'ÉNERGIE, DES
MINES ET DES RESSOURCES, OTTAWA, EN 1971,
D'APRÈS DES PHOTOGRAPHES PRISES EN 1968.
EQUIDISTANCE DES COURBES 100 PIEDS



CYPRUS ANVIL MINING CORPORATION	
NTS 105-J-1	DATE:
DRAWN BY:	