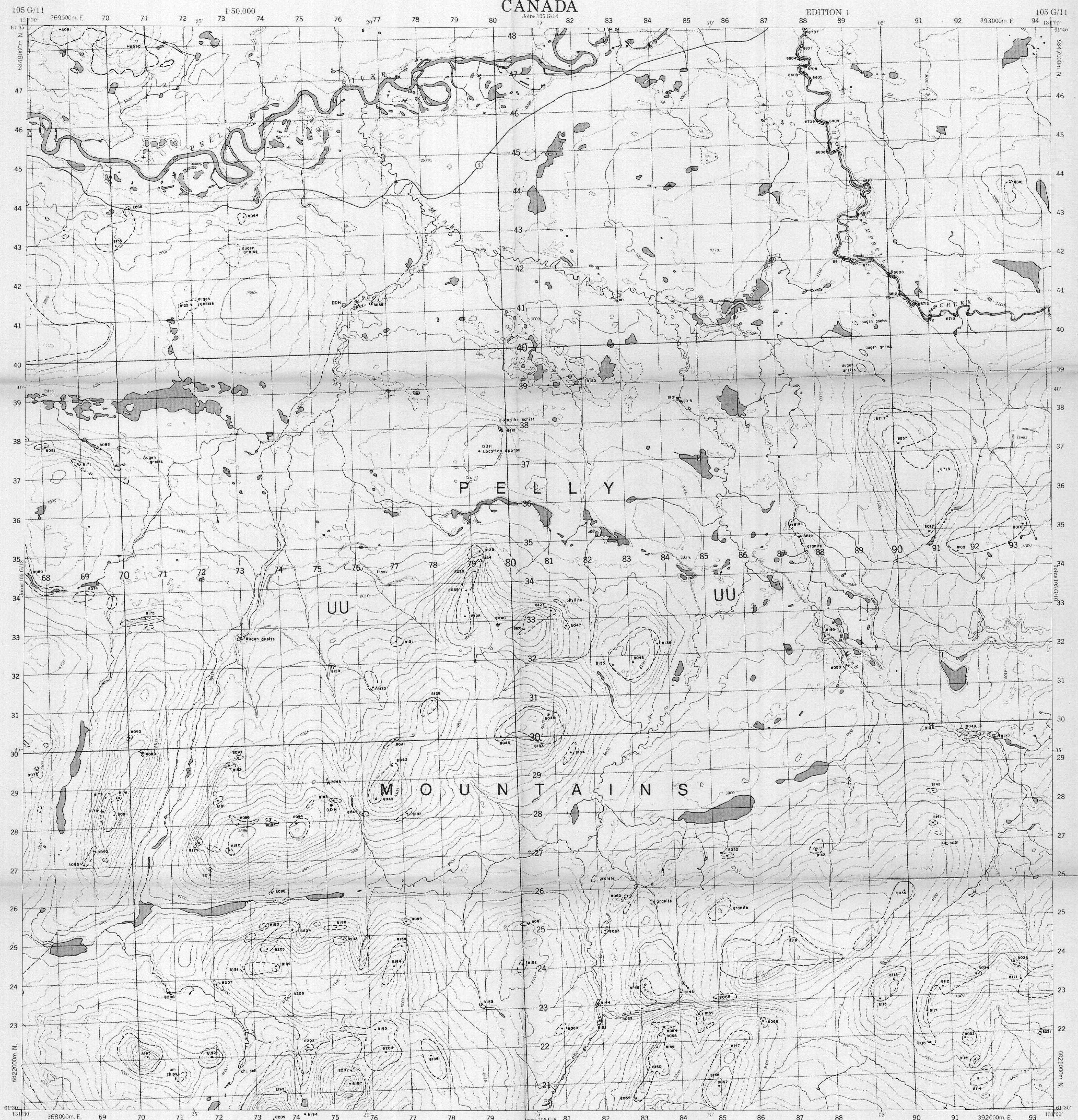


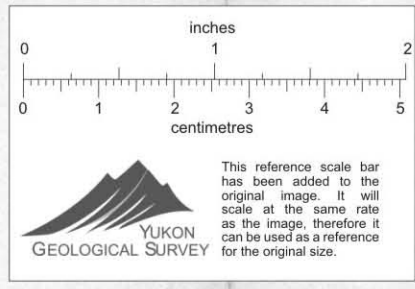
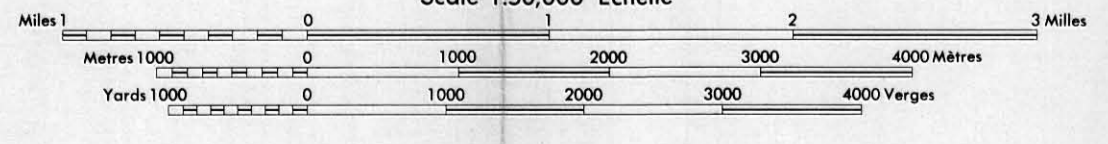
CANADA

EDITION 1



MINK CREEK
YUKON TERRITORY

Scale 1:50,000 Échelle



Provisional 1:50,000 maps are prepared by the SURVEYS AND MAPPING BRANCH, DEPARTMENT OF ENERGY, MINES AND TECHNICAL SURVEYS, Ottawa, Ontario. They are not for sale.

Roads:
 Road or stabilized surface, all weather
 Road surface, dry weather and unclassified roads
 Dirt track
 Trail or path

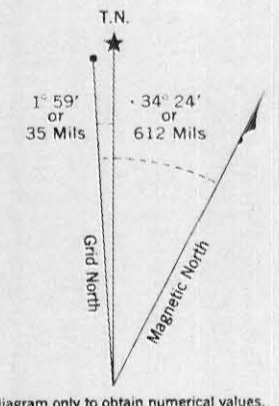
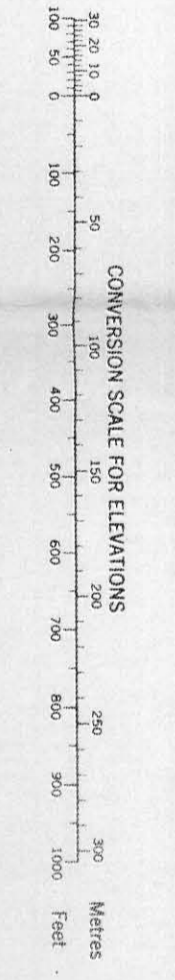
Railways:
 Railway
 Railway, single track
 Railway, double track

This Provisional Map is equivalent to a standard map in accuracy of content.
 Some names on this map are not set official.
 Contour interval, 100 FEET
 Elevations in feet above Mean Sea Level
 North American Datum, 1927
 Transverse Mercator Projection

Cette carte provisoire équivaut à une carte régulière en ce qui concerne la précision de l'information.
 Certains noms inscrits sur cette carte ne sont pas encore officiels. La projection des hauteurs de la carte géométrique sera par conséquent de la projection transverse méridienne.
 Échelle des courbes, 100 PIEDS
 Élévations en pieds au-dessus du niveau moyen de la mer
 Système de référence géodésique nord-américain, 1927
 Projection transverse de Mercator

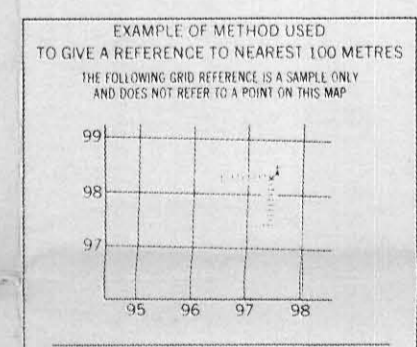
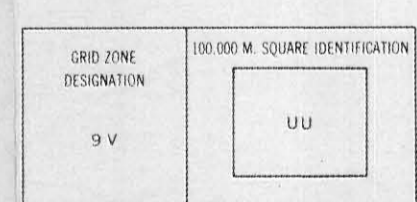
Échelle au 1:50,000 par la DIRECTION DES LEVÉS ET DE LA CARTOGRAPHIE, MINISTÈRE DES ÉNERGIES, DES MINES ET DES TECHNOLOGIES, Ottawa, Ontario.
 Cette carte est le résultat de la compilation et du tracé d'une série de cartes de la carte géométrique.
 Les courbes sont en pieds au-dessus du Niveau Moyen de la Mer, au Nord Américain, 1927.
 © Canada 1973. Tous droits réservés.

Refer to this map as: 105 G/11 EDITION 1 MTC SERIES A 172



Use diagram only to obtain numerical values.
 APPROXIMATE MEAN DECLINATION 1972 FOR CENTRE OF MAP
 Annual change decreasing 4.1'

ONE THOUSAND METRE
UNIVERSAL TRANSVERSE MERCATOR GRID
ZONE 9



REFERENCE POINT	COORDINATE (as shown)
WESTING: Road number on grid line immediately to left of point	97
EASTING: Road number on grid line immediately to right of point	98
NORTHING: Road number on grid line immediately below point	25
SOUTHING: Road number on grid line immediately above point	24

EXAMPLE MILITARY GRID REFERENCE: 979824
 Nearest 100m grid reference (100 000 metres) (about 63 metres)

105 G/11
EDITION 1

006329

CYPRUS ANVIL MINING CORPORATION

REVISED:

NTS: 105-G-11
 DRAWN BY: c/c/rwr
 DATE: DEC. 5, 1979