

ADVANCE PRINT

CANADA

ÉPREUVE PRÉLIMINAIRE

105 J/1

62°15'

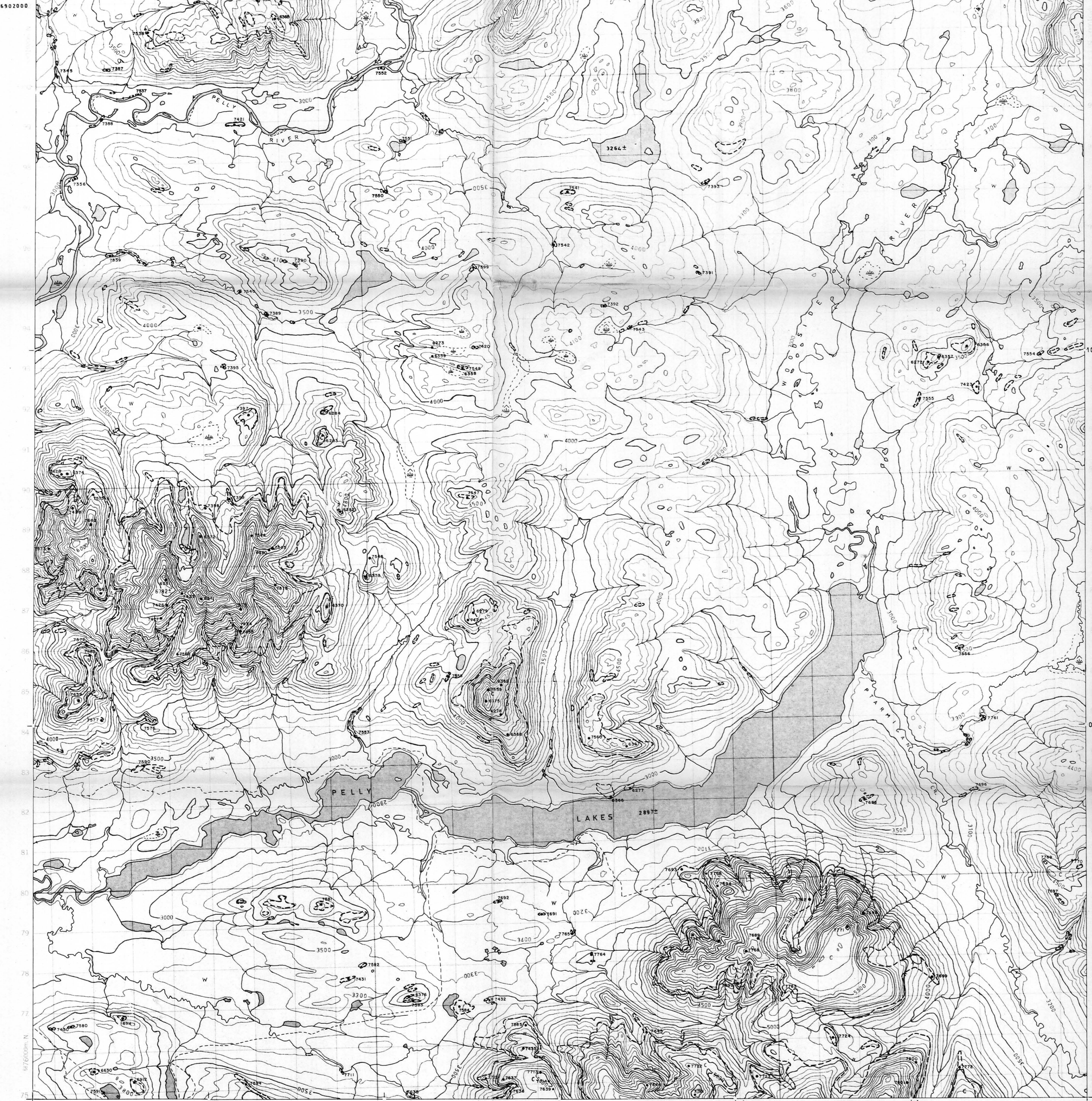
10'

05'

62'

4718000

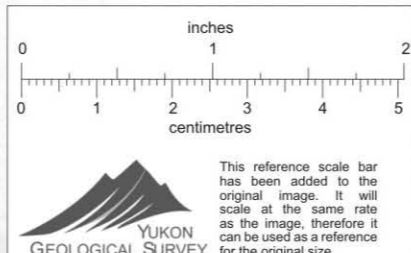
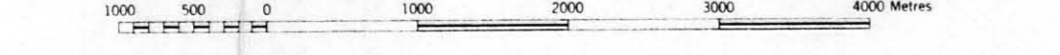
5874000



PRODUCED BY SURVEYS AND MAPPING BRANCH,
DEPARTMENT OF ENERGY, MINES AND RESOURCES,
OTTAWA, 1971, FROM PHOTOGRAPHS TAKEN IN 1968.
CONTOUR INTERVAL 100 FEET

PELTY LAKES
YUKON TERRITORY

SCALE 1:50,000 ÉCHELLE
1.25 inches to 1 mile approximately



ÉTABLI PAR LA DIRECTION DES LEVÉS ET DE LA
CARTOGRAPHIE, MINISTÈRE DE L'ÉNERGIE, DES
MINES ET DES RESSOURCES, OTTAWA, EN 1971,
D'APRÈS DES PHOTOGRAPHIES PRISES EN 1968.

EQUIDISTANCE DES COURBES 100 PIEDS

006330

CYPRUS ANVIL MINING CORPORATION.	
ANMAC PROJECT	
YUKON TERRITORY	
GEOLOGICAL MAP	
NTS. 105-J-1	DATE:
SURVEY BY:	
DRAWN BY:	