



INTERNAL CORRESPONDENCE

006365

D-27

DATE 83-06-20
YEAR MONTH DAY

To J. McKibbin, M. Nicholson

FROM Gary A. Webster

L. Dolecki, T. Biggs

Environmental Affairs
DEPARTMENT OR FIELD OFFICE

COST CENTRE OR AFE No. FILE No. 8.22.4

SUBJECT

VISIT TO CARMACKS COAL PROPERTIES
TANTALUS AND TANTALUS BUTTE, CARMACKS, Y.T.

A visit to the coal properties was to evaluate the risk to the public of the cave-ins as a result of the underground fire in the Tantalus Butte property, to evaluate the amount of reclamation that might be required should Dome wish to abandon the properties, and the state of the remaining equipment and buildings on the property. The attached photos and sketch indicate that the underground cave-ins can be safely protected from accident by some improvement to the north end of the access to the strike of the coal property. Some barbed wire has been strung (one strand) for a considerable length of the strike in the steeper areas at the south end of the property. I see little point in attempting to fill or fence the individual cave-ins. It is worthwhile to remove the structure over the raise at the north end of the property and to try to fill it with waste material. Similarly, the existing access road at the north end of the strike that is partially blocked-off should be made significantly more difficult for access to be gained to the area of the cave-ins and the last raise.

The people that operate the television dish located at the top of the bluff should be contacted to ascertain that they are aware of the hazard of the cave-ins and that they be given a key to an improved gate to be installed below the open pit and wasterock piles at the north end of the property.

Wasterock piles have been graded and show no erosion problems and are beginning to naturally revegetate. It would be a simple job, if required at all, to try to get some seed from indigenous plants to revegetate these slopes. Sage grows prevalently on steep slopes in the immediate area and would probably be a good species to attempt to grow. In late 1981 a report entitled "Cyprus Anvil Mining Corporation, Carmacks Coal Project Reclamation Plan" was submitted to Indian & Northern Affairs Canada (INAC). INAC issued a Land Use Permit to allow CAMC to conduct its reclamation program. The program consisted of stabilizing open pit cuts and revegetation of reclaimed waste piles. I will follow-up with INAC to find out about status of Permit and delaying work.

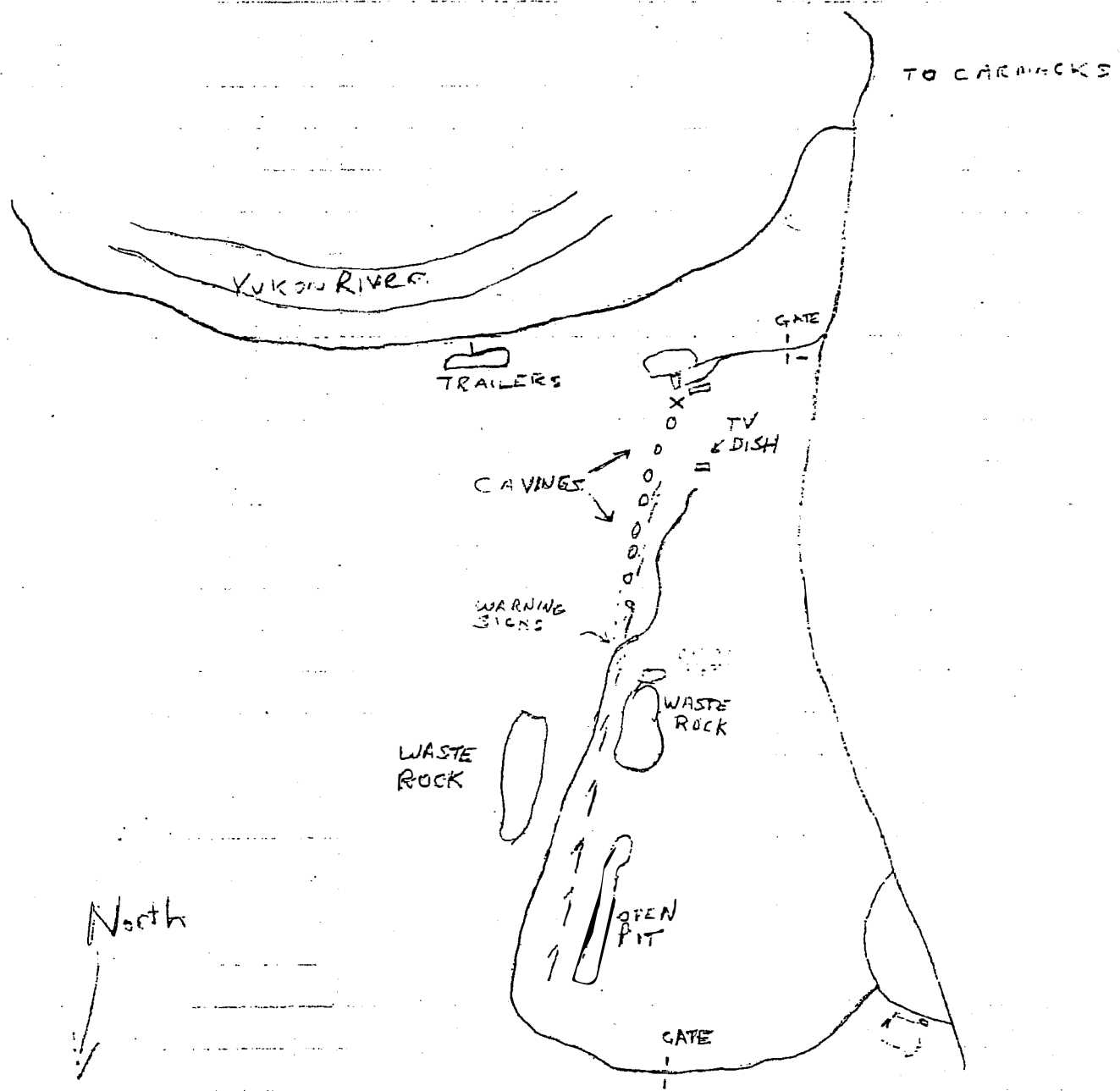
COST CENTRE
OR AFE No.

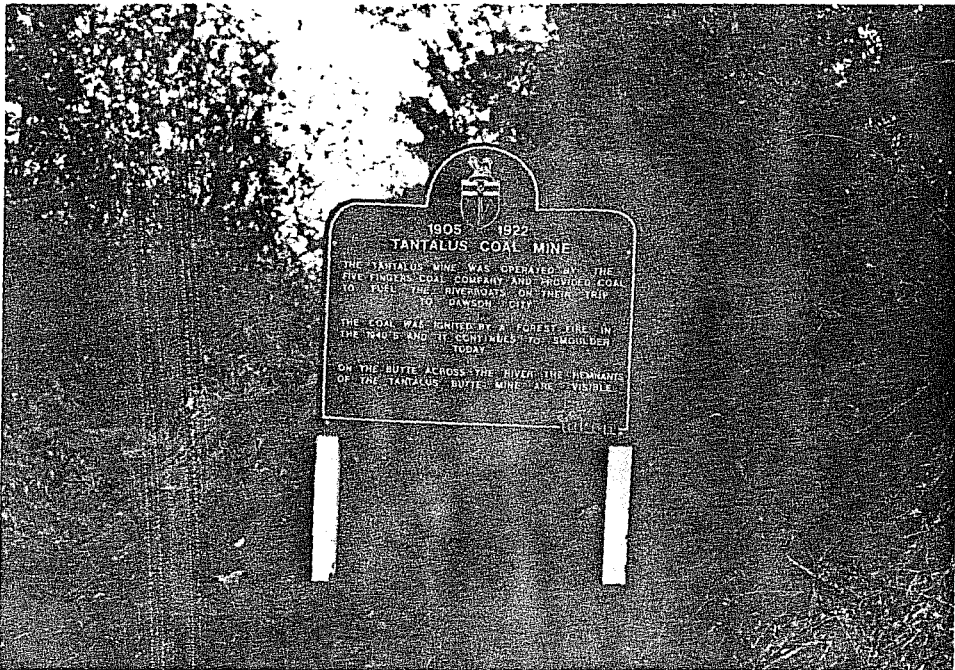
TITLE/PROJECT

DATE
YEAR MONTH DAY

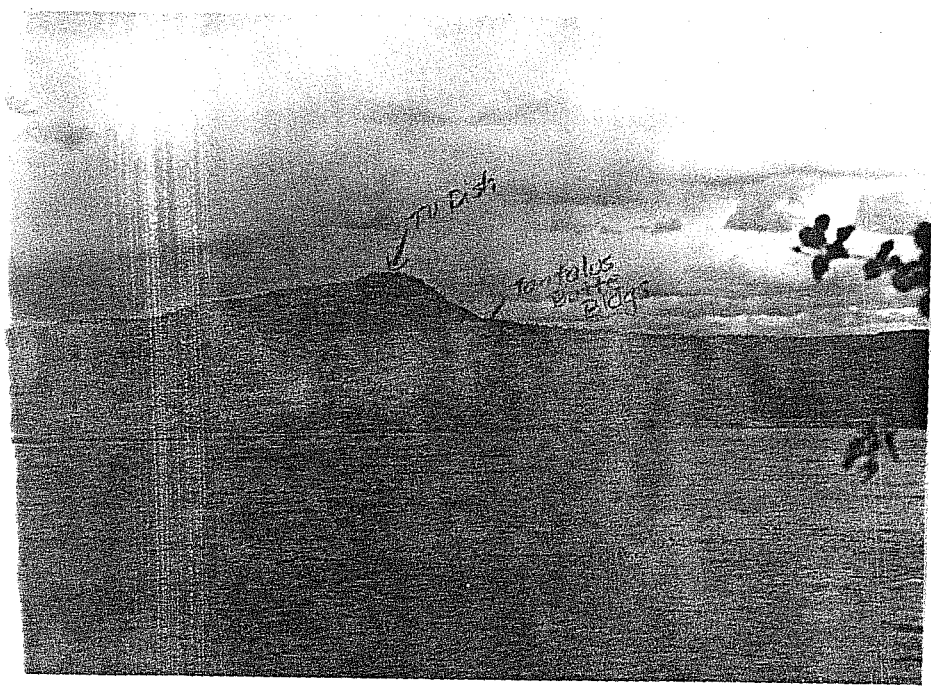
PREPARED BY

CHECKED BY



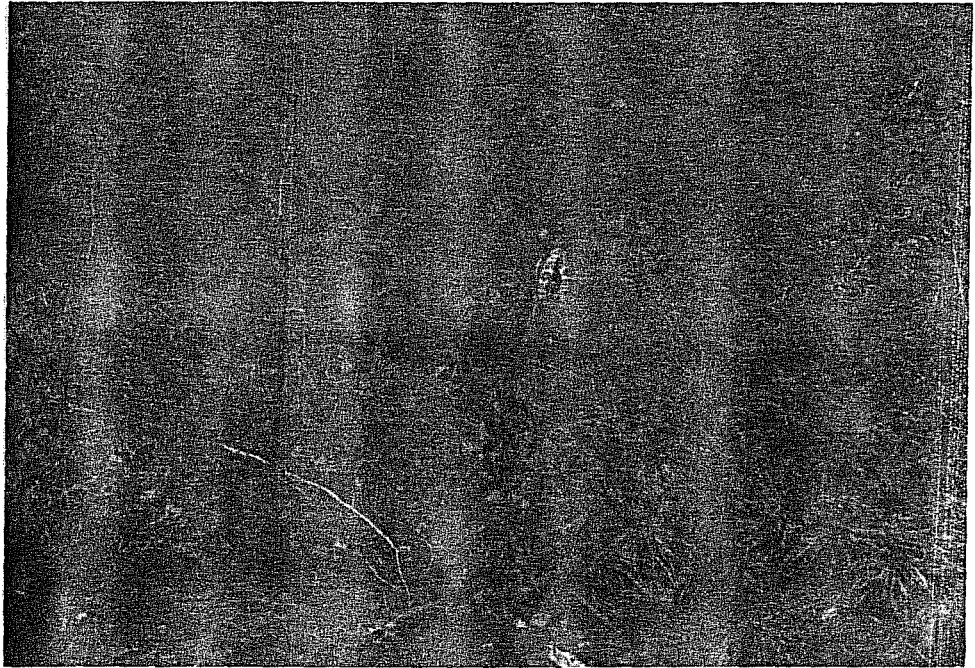


June 8, 1983
Sign at the Tantalus Coal Mine south side of Yukon River near Carmacks.

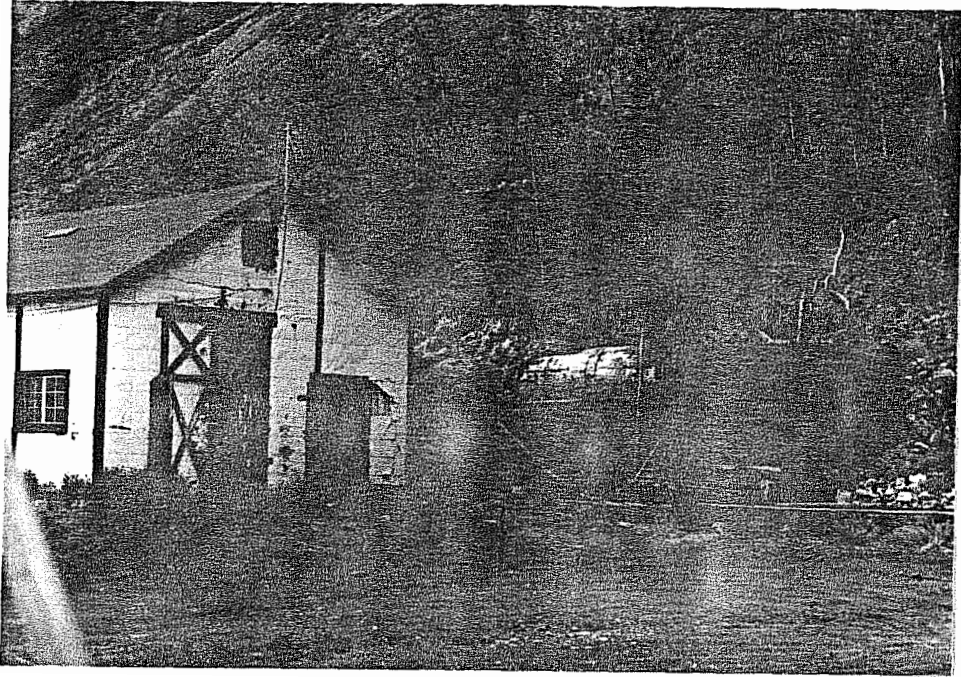


June 8, 1983
View from sign to Tantalus Butte Coal Mine north of Yukon River near Carmacks. Carmacks TV DISH is located on top of bluff.

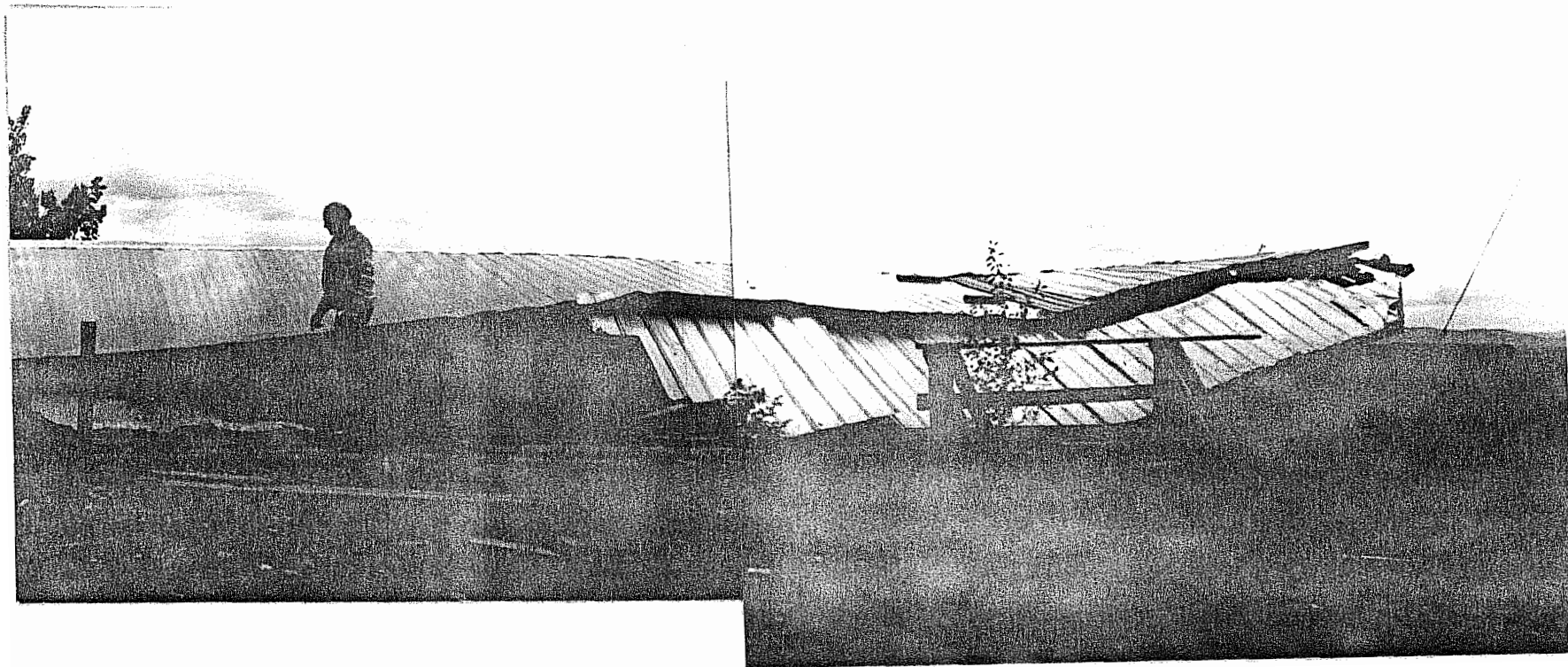
June 8, 1983
Tantalus Butte Coal Mine
Cave-in just above filled in adit.



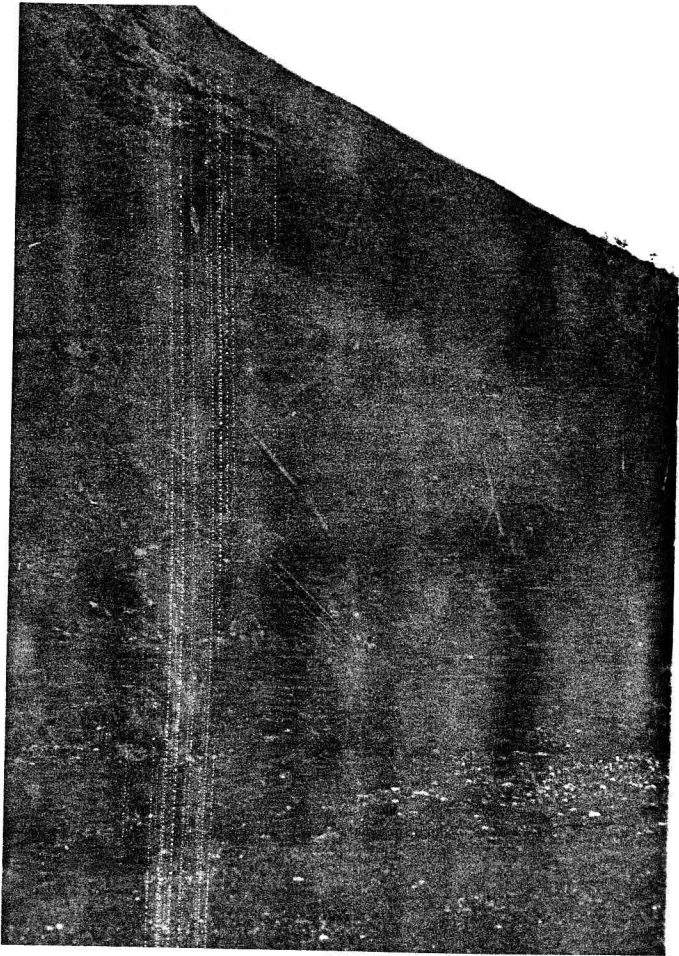
June 8, 1983
Tantalus Butte Coal Mine
Filled in adit entrance.



June 8, 1983
Tantalus Butte Coal Mine
Shed and tanks 100 feet to the left of the filled
in adit. Note rail lines to the shed and tippie.



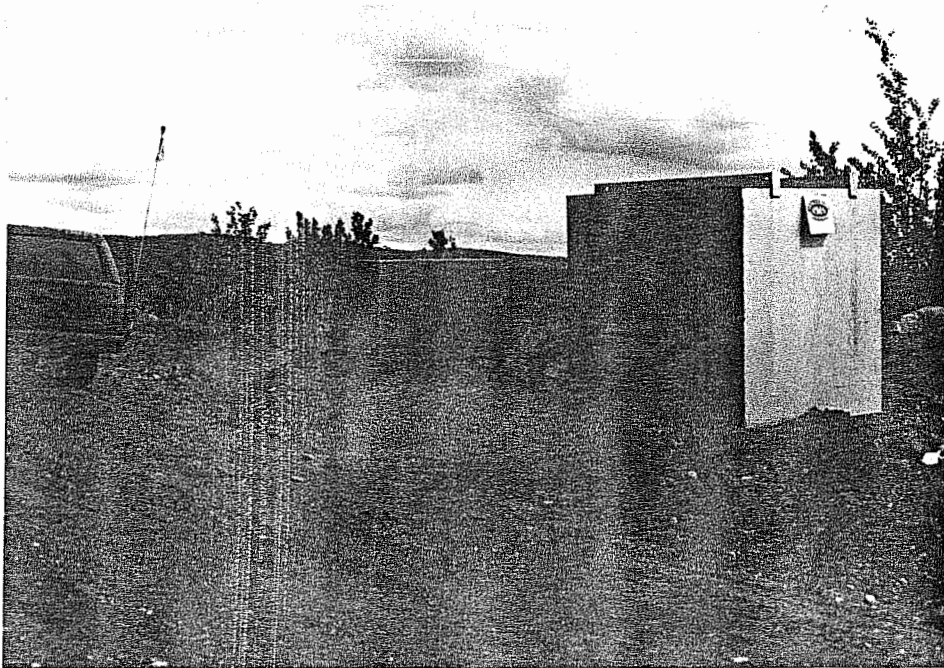
June 8, 1983
Tantalus Butte Coal Mine
Vandalized cover over rail line to tipple.



June 8, 1983
Tantalus Butte Coal Mine
Vandalized Tipple and upper
and lower waste dumps from
underground operations.



June 8, 1983
Tantalus Butte Coal Mine
Coal core shed and core
samples outside 200 feet
left of shed and tanks.



June 8, 1983
Tantalus Butte Coal Mine
Surplus & explosives
magazine on lower waste
dump from underground
operations.
Note natural revegetation.



June 8, 1983
Tantalus Butte Coal Mine
Debris at edge of lower
waste dump from underground
operations.



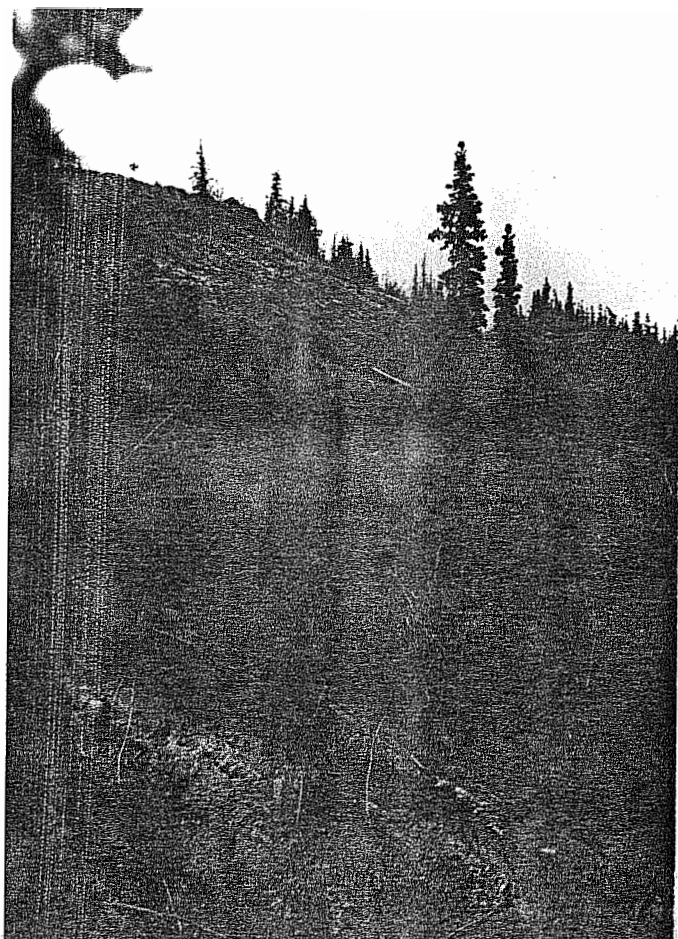
June 8, 1983
Tantalus Butte Coal Mine
Single strand of barbed wire
separating road from cave-
Ins Slope.
Cat Track made to fill in
one of early cave-ins.



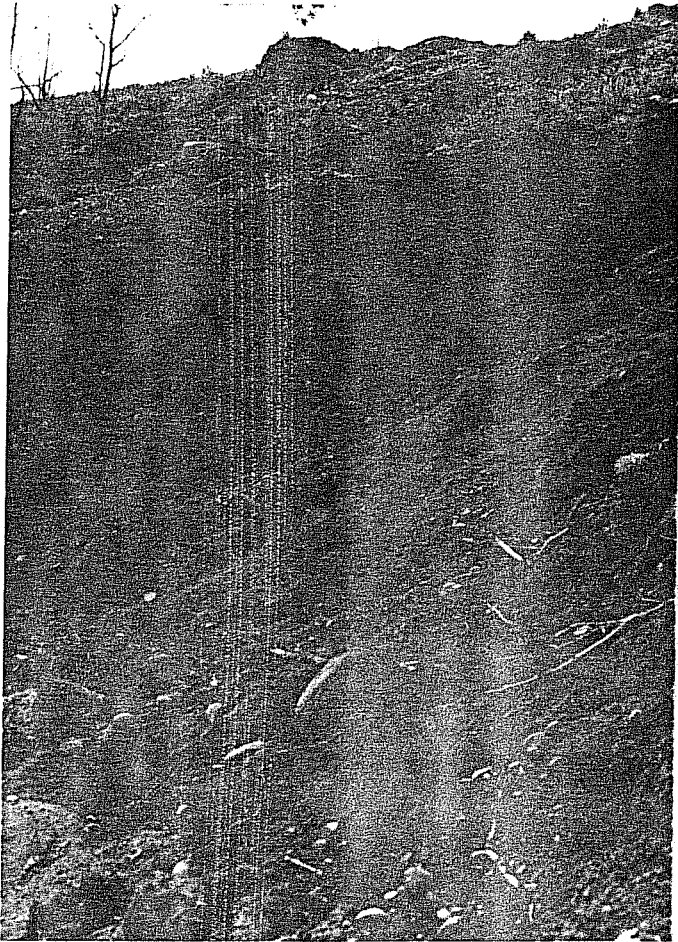
June 8, 1983
Tantalus Butte Coal Mine
Size of one of major
cave-ins.



June 8, 1983
Tantalus Butte Coal Mine
One of larger cave-ins
shows deep hole to under-
ground procupine seen in
this cave-in.
Note revegetation in
cave-in.



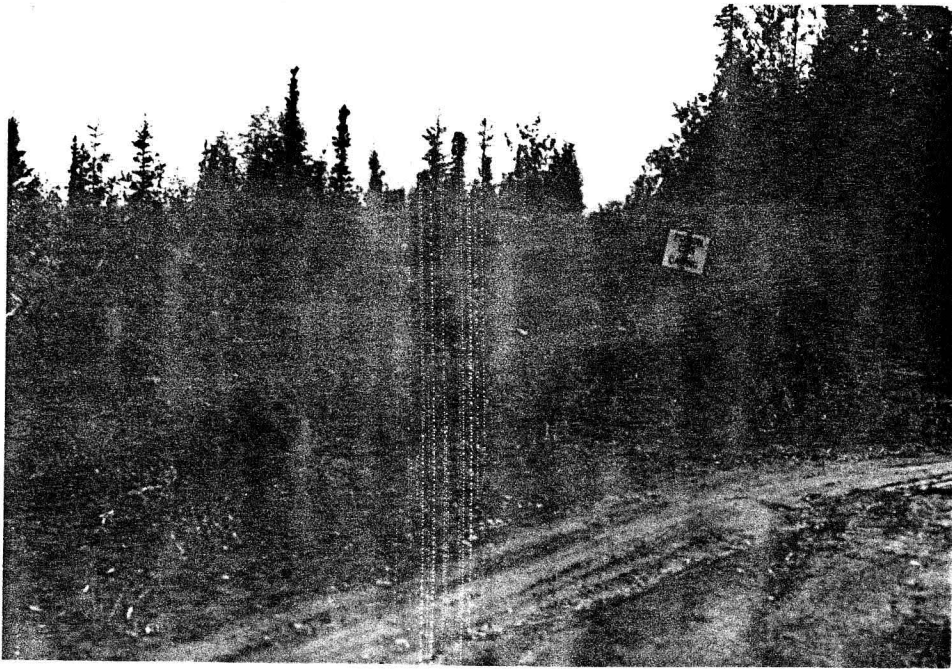
June 8, 1983
Tantalus Butte Coal Mine
View along strike of coal
vein shows 4 cave-ins
farthest one emitting
steam & gases.



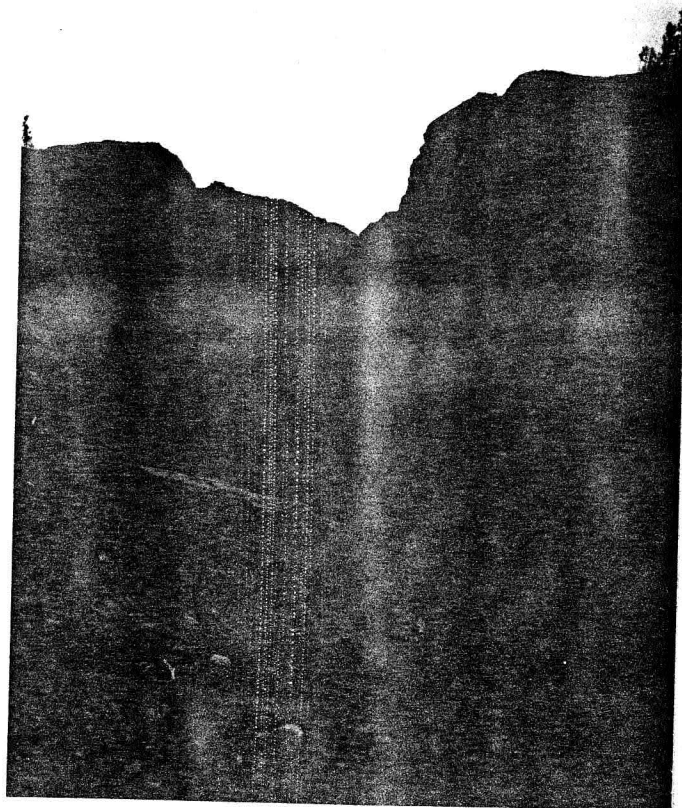
June 8, 1983
Tantalus Butte Coal Mine
One of northerly cave-ins.
Note crack and venting
gases top centre and right.
Access from north is
relatively easy.



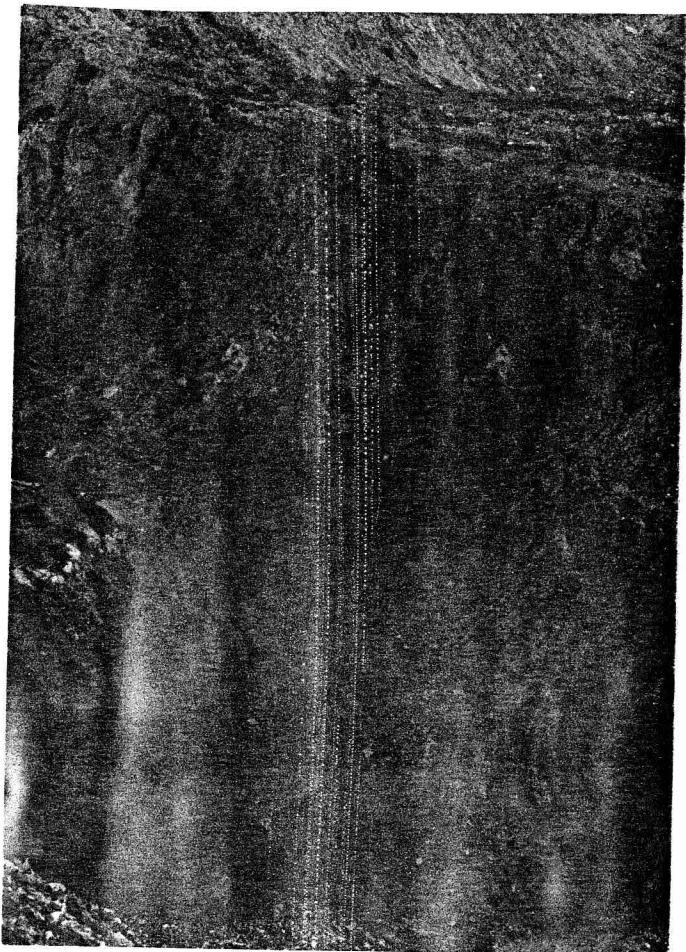
June 8, 1983
Tantalus Butte Coal Mine
One of old raises to
underground near the north
end of strike.
Raise opening has been
covered with plastic, but
should probably be removed
and filled in.
Access to this area from
north is relatively easy.



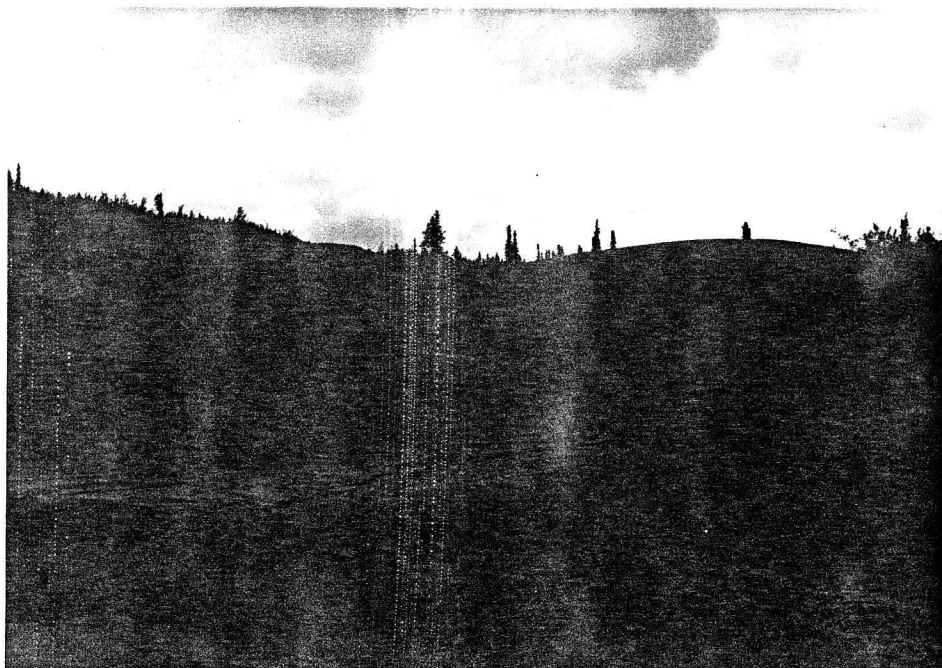
June 8, 1983
Tantalus Butte Coal Mine
Junction of road to TV DISH
(right) and access to north
end cave-ins.
This road block should be
improved.



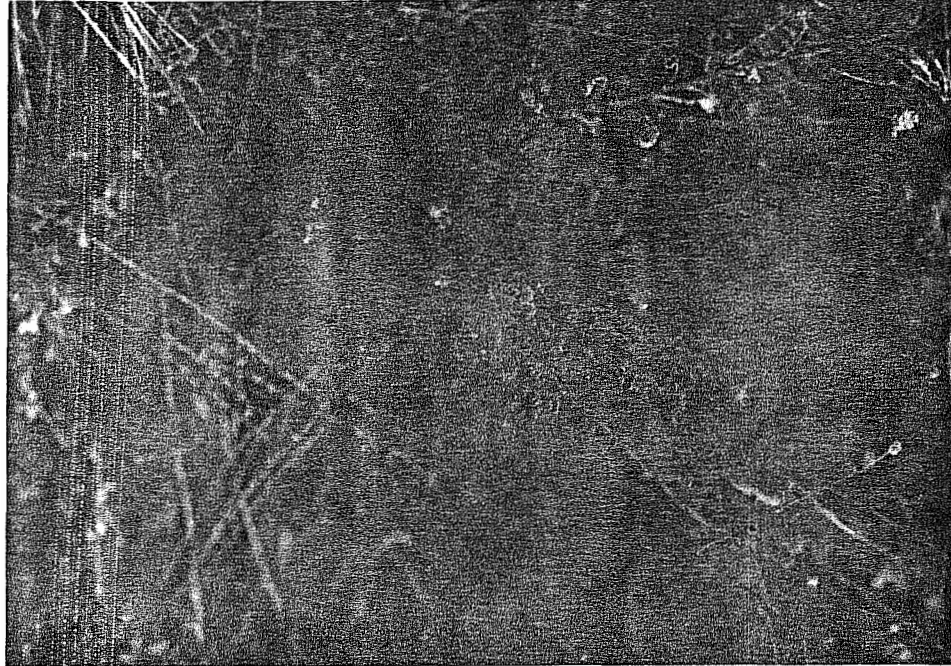
June 8, 1983
Tantalus Butte Coal Mine
North end of open pit
mining.
Note narrowness of the coal
zone.



June 8, 1983
Tantalus Butte Coal Mine
Southern portion of open
pit, large waste rock areas
to east and west appear
stable and nor eroding.



June 8, 1983
Tantalus Butte Coal Mine
Wasterock area typical of
the surface mined area.



June 8, 1983
Tantalus Butte Coal Mine
Sage plant naturally grows on steep slopes and
will likely grow on wasterock pile slopes.