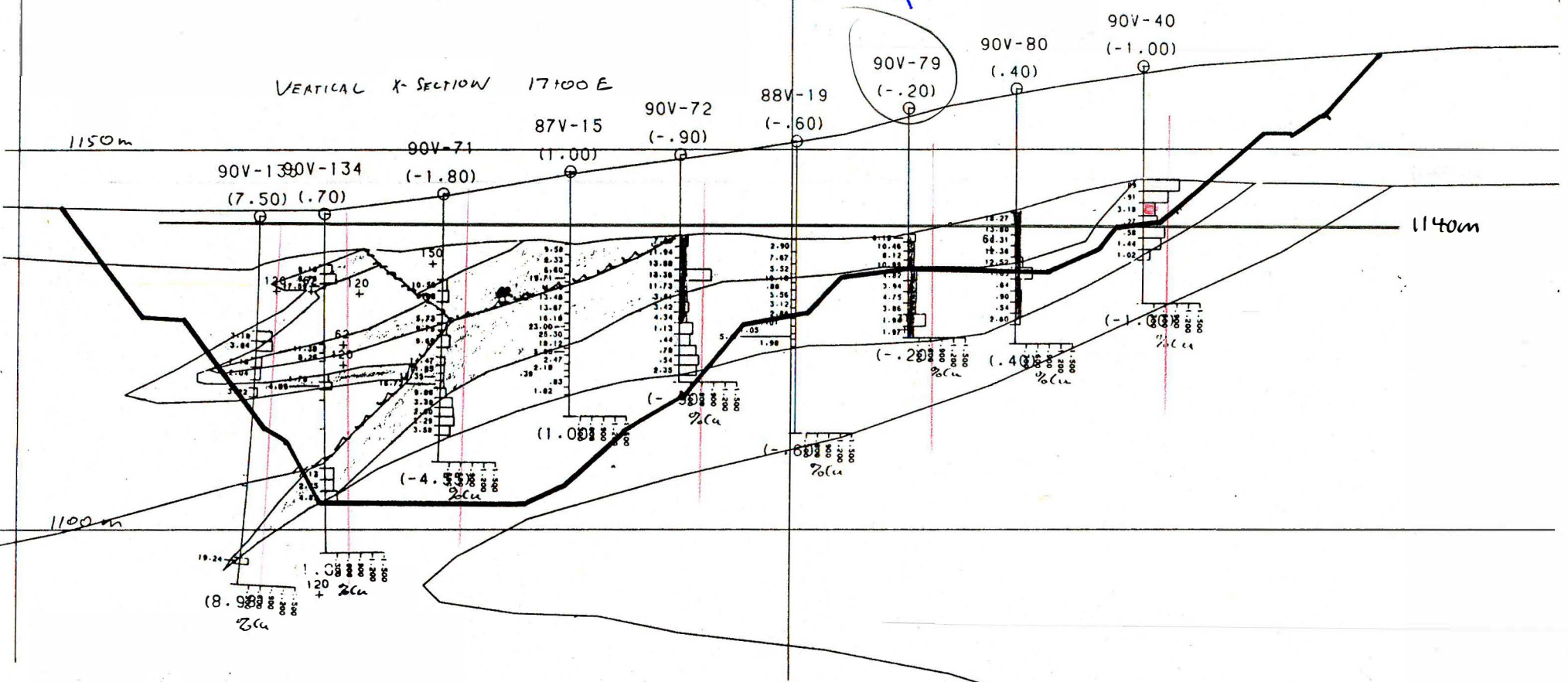


006510

VERTICAL X-SECTION 17100 E

E = 10.600

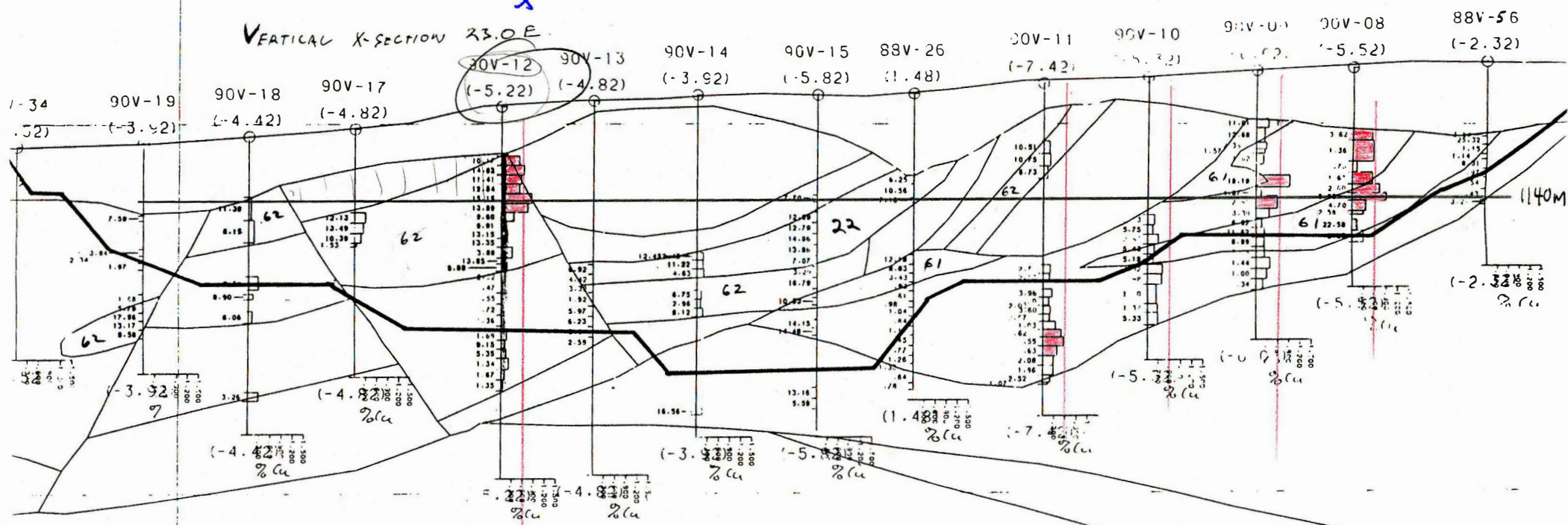


*John
Hampden
Miles*

E = 15,000

VERTICAL X-SECTION 23.0E

X

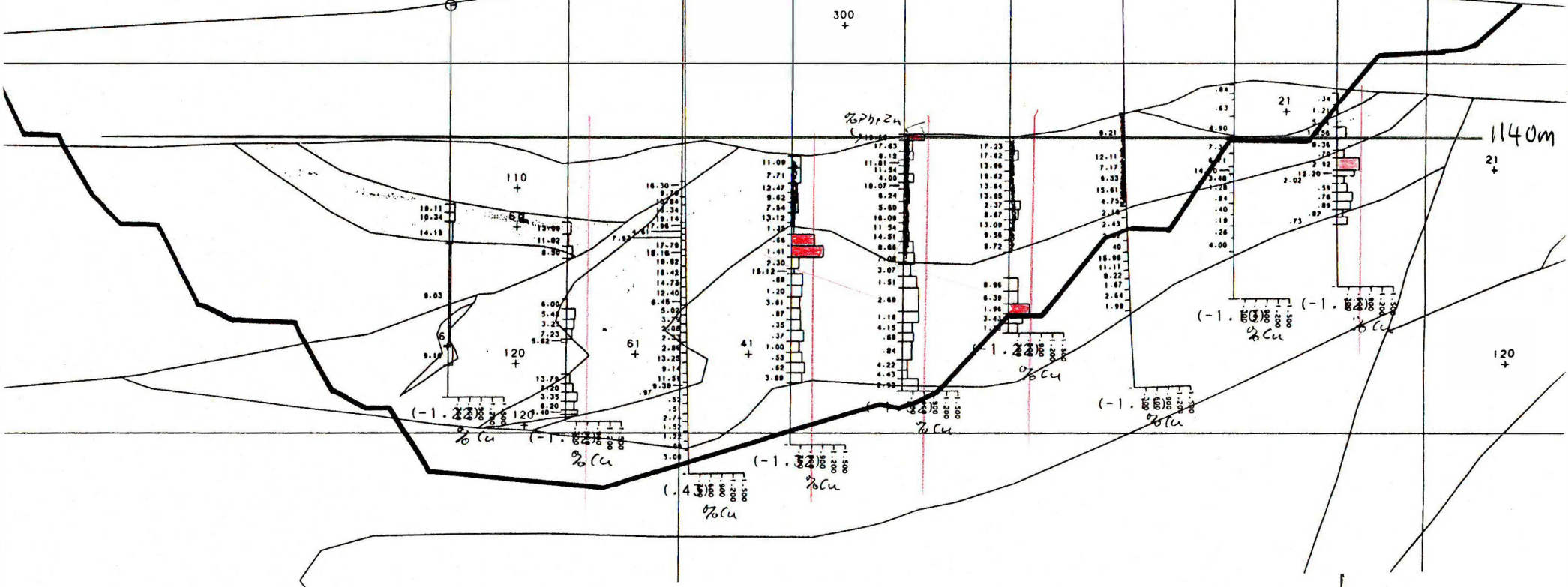


VERTICAL X-SECTION/ 13100 E

500 +

90V-77 (-1.22) 90V-76 (-1.12) 88V-05 (.8) 90V-45 (-1.32) 90V-44 (-1.32) 90V-43 (-1.22) 90V-113 (-1.22) 90V-114 (-1.22) 90V-133 (-1.52)

300 +



6461

