

000570

PRESENTATION OF CURRAGH RESOURCES CURRENT LONG RANGE PLANS
IN THE FARO REGION

- OVERVIEW BASIS HERE
- DETAILS OF SPECIFIC ASPECTS WILL BE
PRESENTED/DISCUSSED WITH SPECIAL INTEREST GROUPS
ON ONGOING BASIS

GOVERNMENT PRESENTATION

VANGORDA PLATEAU DEVELOPMENT

MARCH 9, 1987

WHITEHORSE, YUKON

- I INTRODUCTION
- II PLANNING METHODOLOGY
- III DEVELOPMENT SCHEDULE
- IV GEOLOGY AND RESERVES
- V INFRASTRUCTURE REQUIRED
- VI MINE DESIGN AND ORE RESERVES
- VII WORK SYSTEMS
- VIII PRODUCTION SCHEDULE
- IX ENVIRONMENTAL AND LAND USE PLANNING
- X DISCUSSION AND QUESTIONS

I INTRODUCTORY STATEMENTS

1. FARO OPERATIONS UPDATE

2. FARO PIT PRODUCTION AND EMPLOYMENT 1987-91 FIGURE 18

3. REQUIREMENT TO DEVELOP VANGORDA PLATEAU

CURRAGH:

- CONTINUED OPERATION AT FULL PRODUCTION BEYOND 1988

YUKON:

- EMPLOYMENT 3700 ADDITIONAL PY'S
- ECONOMIC STABILITY - STABLE PRODUCTION & EMPLOYMENT TO AT LEAST 1999.
- GOVERNMENT REVENUES
- UTILIZATION OF INFRASTRUCTURE
 - NCPC
 - HIGHWAYS
 - TOWNSITE
 - OTHER GOVERNMENT FACILITIES & SERVICES
- CAPITAL INVESTMENT \$60 MILLION
- SPIN-OFF ECONOMIC BENEFITS EMPLOYMENT & BUSINESS OPPORTUNITIES
- INTERNATIONAL BALANCE OF TRADE

\$1.0 BILLION NET BENEFIT

4. PURPOSE OF PRESENTATION

1. FACILITATE REGULATORY PROCESS
2. COOPERATION BETWEEN CURRAGH AND ALL LEVELS OF GOVERNMENT
3. MAXIMIZE BENEFITS TO YUKON AND CURRAGH
4. MITIGATE ENVIRONMENTAL IMPACTS

II PLANNING METHODOLOGY

1. REVIEW OF EXISTING DATA AND PLANNING UNDERTAKEN BY:

- KERR ADDISON MINES
- AEX MINERALS
- CYPRUS ANVIL

2. WORK TO DATE

- RENOVATIONS TO CONCENTRATOR TO HANDLE FINER GRIND
- STUDY OF ORE TRANSPORTATION ALTERNATIVES
- METALLURGICAL TESTING OF V.G. ORES
- FILL-IN DRILLING
- PRELIMINARY MINE PLANS
- ENVIRONMENTAL BASELINE STUDIES

3. CURRAGH'S MINE PLANNING OBJECTIVES

- DEVELOP GRUM AND VANGORDA TO REPLACE DECLINING FARO PRODUCTION
- UTILIZE SURPLUS LABOUR AND EQUIPMENT FROM FARO OPERATIONS
- MINIMIZE PRE-PRODUCTION CAPITAL INVESTMENT
- MAINTAIN A MINIMUM OF 500,000 DMT OF CONCENTRATE PRODUCTION
- INCORPORATE FARO UNDERGROUND



TITLE: FARO AREA DEPOSITS
LOCATION PLAN

SECTION:

KILBORN ENGINEERING (B.C.) LTD.

AREA NO:

REV. NO:

CLIENT: CURRAGH RESOURCES
FARO, YUKON

PROJECT NO:
3509-19

DRAWING NO:

FIGURE 1

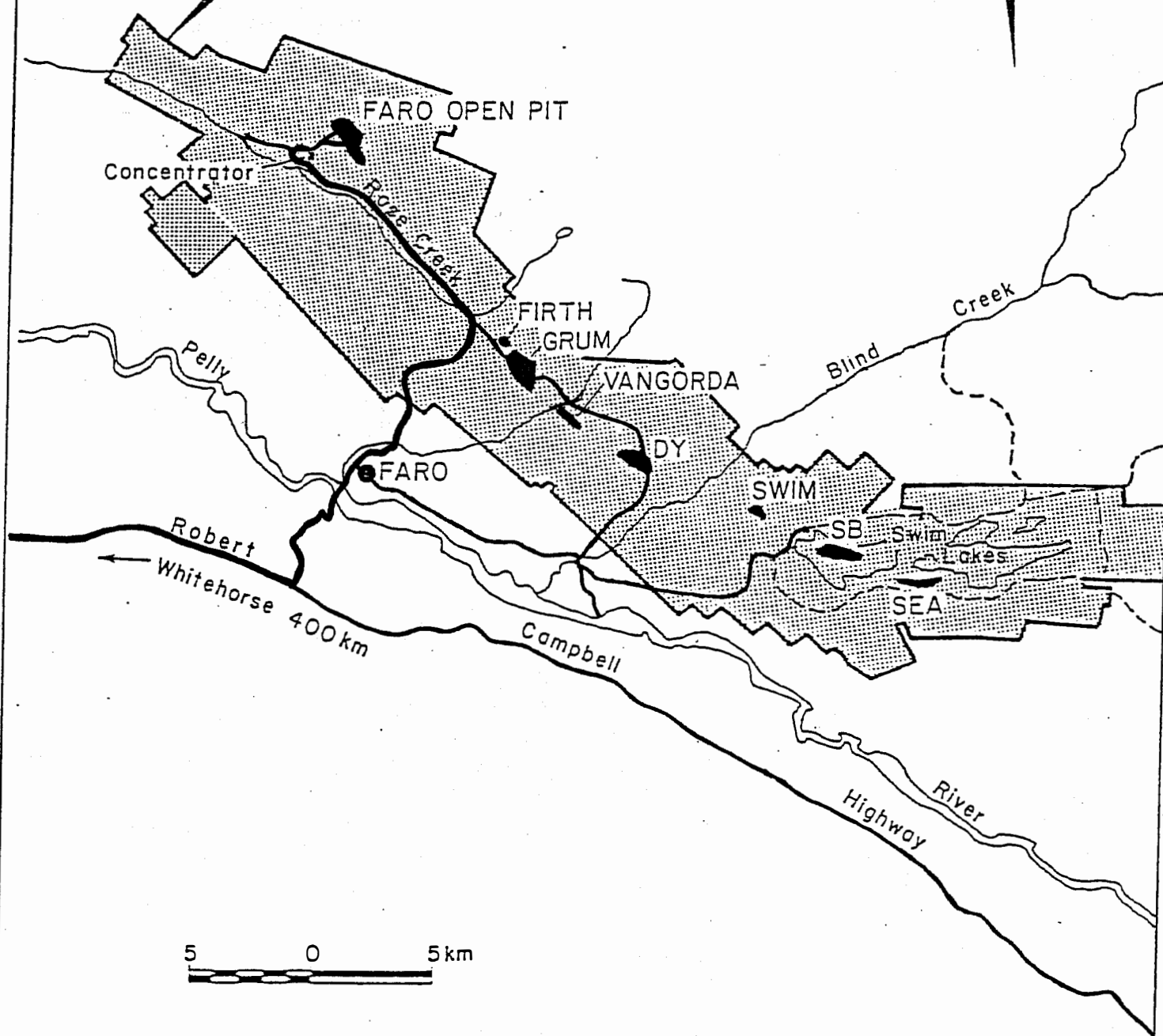
APPROVED:

DATE:
MAR 3/87

A



CLAIM BLOCK BOUNDARY



TITLE: FARO AREA DEPOSITS MINERAL CLAIM MAP		SECTION:	
KILBORN ENGINEERING (B.C.) LTD.		AREA NO:	REV. NO:
CLIENT: CURRAGH RESOURCES FARO, YUKON	PROJECT NO: 3509-19	DRAWING NO:	
APPROVED:	DATE: MAR 3/87	FIGURE 2	
			A

III DEVELOPMENT SCHEDULE

(SEE FIGURE 3)

FEBRUARY 25, 1987

DESCRIPTION

1987 1988 1989 1990 1991 1992 1993 1994 1995 1996 1997 1998 1999 2000

VANGORD CREEK DIVERSION—WATER BOARD APPROVAL

CONDUCT BASELINE ENVIRONMENTAL STUDIES

FARO PIT:
 PHASE—AY—ORE MINING
 RELEASE MARION SHOVEL TO DY—WASTE STRIPPING
 PHASE—BZ—WASTE/ORE MINING
 RELEASE P&H 2100 SHOVEL TO VANGORDA PIT
 PHASE—CZ—WASTE/ORE MINING
 RELEASE P&H SHOVEL TO GRUM STAGE I
 PHASE—DY—WASTE/ORE MINING
 RELEASE MARION SHOVEL TO VANGORDA PIT
 RELEASE P&H 2100 SHOVEL TO GRUM PIT

FARO UNDERGROUND:
 DEVELOPMENT—DECLINE
 ORE PRODUCTION
 UNDERGROUND COMPLETED

INFRASTRUCTURE:
 25 KV POWERLINE TO VANGORDA COMPLETE
 ROSE CREEK CROSSING **FOOTNOTE 1**
 VANGORDA PLATEAU HAUL ROAD **FOOTNOTE 2**
 VANGORDA PLATEAU MAINTENANCE SHOPS

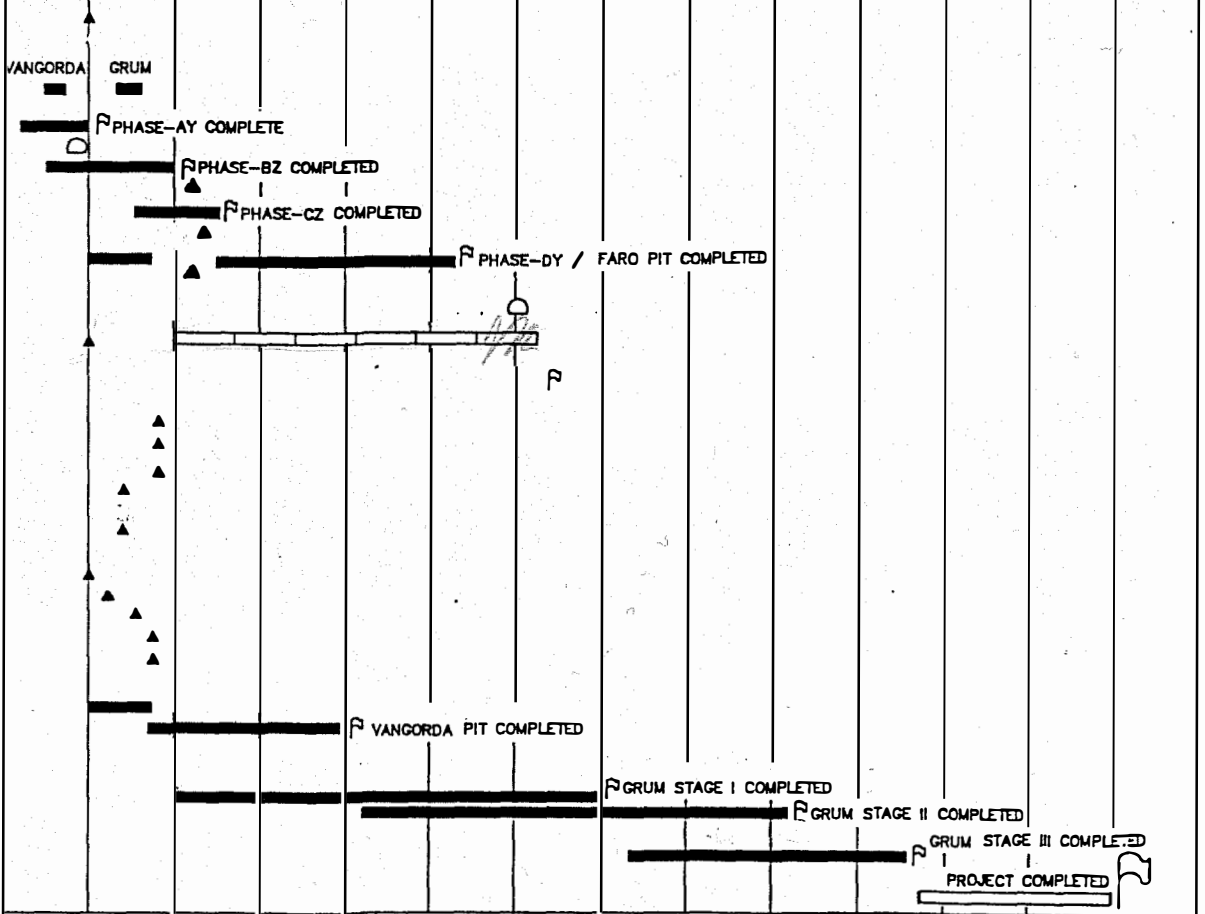
VANGORDA PLATEAU FUEL/LUBE STATION

SITE PREPARATION:
 TREE REMOVAL/GRUB VANGORDA
 DEWATER OVERBURDEN VANGORDA
 VANGORDA CREEK DIVERSION/DAM
 TREE REMOVAL/GRUB GRUM
 DEWATER OVERBURDEN GRUM

VANGORDA PIT:
 INITIAL OVERBURDEN REMOVAL BY SCRAPERS
 ORE/WASTE MINING

GRUM PIT:
 STAGE I
 STAGE II

STAGE III
 LOW GRADE ORE STOCKPILES:
 MILLING OF LOW GRADE ORES



FOOTNOTE 1— ACCESS REQUIRED FOR SHOVEL MOVE FROM FARO TO VANGORDA PIT
 FOOTNOTE 2— ROAD REQUIRED FOR VANGORDA ORE HAULAGE
 ▲ LATEST IMPLEMENTATION DATE

KILBORN

DRAFT
 SCHEDULE

FIGURE: 3
 CURRAGH RESOURCES
 FARO—AREA DEPOSITS STUDY
 IMPLEMENTATION, EVENTS & ACTIVITIES

IV GEOLOGY AND RESERVES

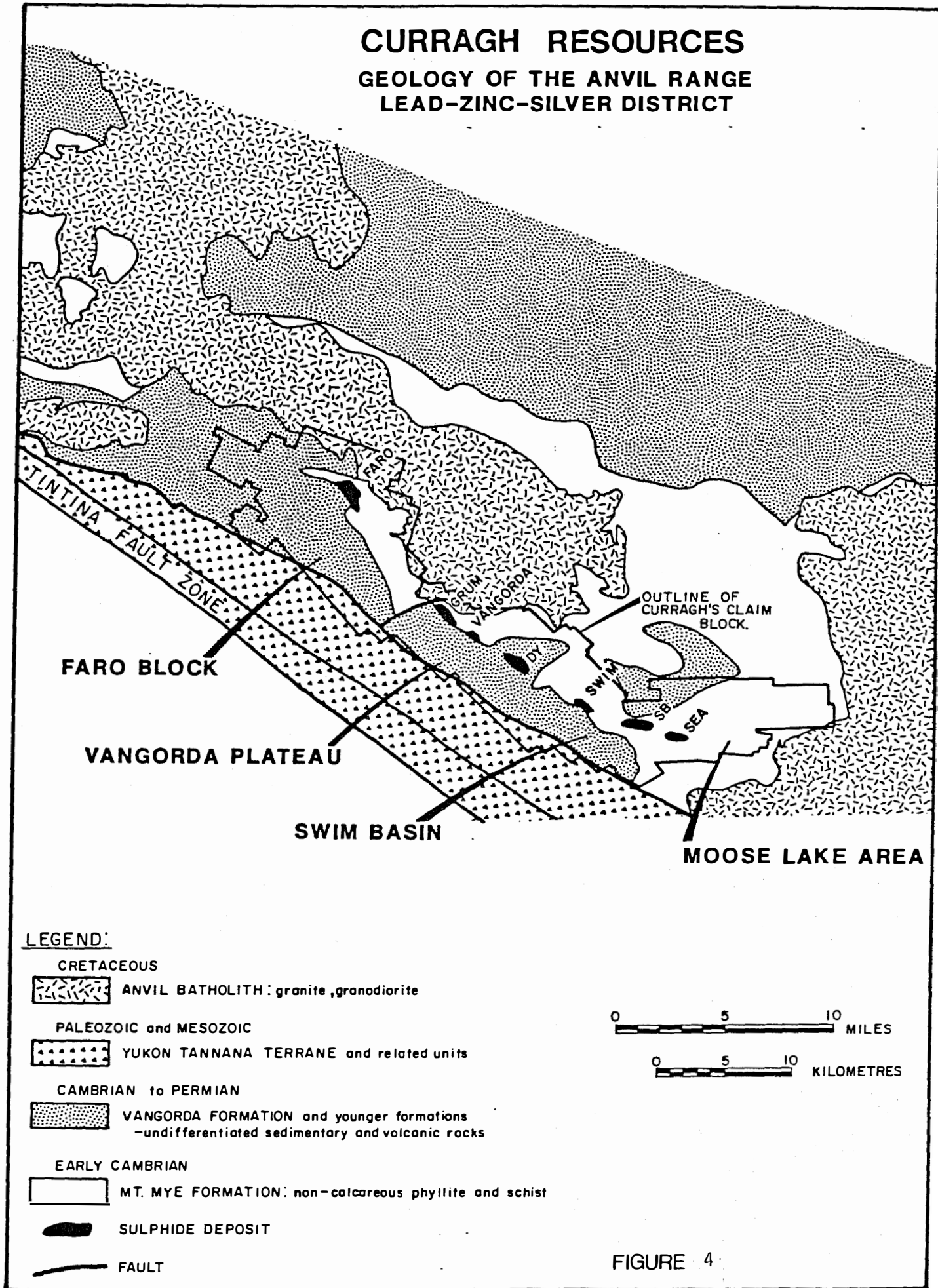
(SEE FIGURE 4)

ANVIL RANGE

- FARO PLUS VANGORDA, GRUM, SWIM AND DY
= 91 MILLION MT 9.4% LEAD/ZINC 58G/T SILVER
- SEDIMENT HOSTED, STRATIFORM, PYRITIC, MASSIVE
SULPHIDE DEPOSITS
- DEPOSITS CONSIST OF 1-5 LAYERS 10-40 M THICK
- ORE HORIZONS ARE STRONGLY ZONED BY ORE TYPES AND
GRADE
- ORE TYPES DIFFER IN:
 - PHYSICAL PROPERTIES
 - GRADE
 - METALLURGY

CURRAGH RESOURCES

GEOLOGY OF THE ANVIL RANGE LEAD-ZINC-SILVER DISTRICT



LEGEND:

- CRETACEOUS
 - ANVIL BATHOLITH: granite, granodiorite
- PALEOZOIC and MESOZOIC
 - YUKON TANNANA TERRANE and related units
- CAMBRIAN to PERMIAN
 - VANGORDA FORMATION and younger formations
-undifferentiated sedimentary and volcanic rocks
- EARLY CAMBRIAN
 - MT. MYE FORMATION: non-calcareous phyllite and schist
 - SULPHIDE DEPOSIT
 - FAULT

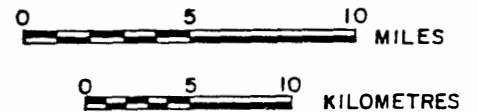


FIGURE 4

1. FARO GEOLOGY AND RESERVES

(SEE FIGURE 5)

- SW DIPPING LENS 5-40 METRES THICK
- ORE TYPES SIMPLIFIED TO 3:
 - BG MASSIVE AND DISSEMINATED IN QUARTZ
 - A CARBON RICH QUARTZITE
 - H PYRRHOTITIC

GEOLOGIC RESERVES - AT START OF 1986: 29.3 MILLION MT (4%
COMBINED CUTOFF GRADE) 3.13% LEAD, 5.03%
ZINC 40.8 G/T SILVER

- 1.8 MILLION MT MINED IN 1986

UNDERGROUND RESERVES

- SW OF OPEN PIT
- 2.6 MILLION MT 5.03% LEAD, 7.72% ZINC, 67.3
G/T SILVER
- ORE LEFT BENEATH PIT IN OTHER AREAS AS WELL

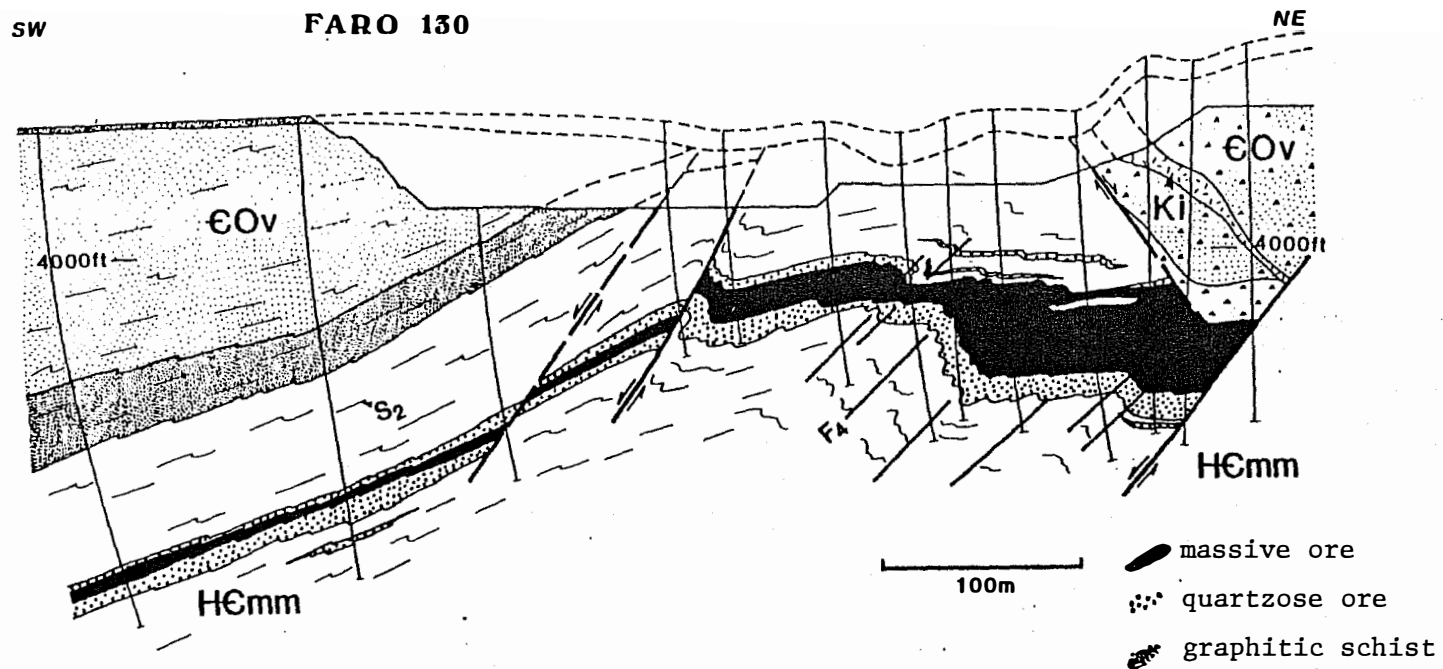


Figure 5. Cross section 130 through the southeast end of Zone 3. The pit outline is as of the June 1982 suspension of mining. The deep sulphides at the southwest end of the section are part of the area of proposed underground mining.

2. GRUM GEOLOGY AND RESERVES

(SEE FIGURE 6)

- MORE COMPLEX STRUCTURE AND STRATIGRAPHY THAN FARO
- 3-5 SULPHIDE HORIZONS IN PLUNGING FOLD
- BLIND DEPOSIT
- LIMITED OXIDATION
- SAME ORE TYPES AS FARO BUT DIFFERENT PROPORTIONS
 - MORE A TYPE
- MASSIVE ORES FINER GRAINED/FINER GRIND REQUIRED
- HIGHER PRECIOUS METALS THAN FARO (GOLD 9 TIMES HIGHER)

RESERVES

- NEW CALCULATION OF MAIN ZONE BY CURRAGH
- MAIN ZONE: 30.6 MILLION MT (4% COMBINED CUTOFF GRADE, UNDILUTED) 3.4% LEAD, 5.6% ZINC, 57 G/T SILVER, .95 G/T GOLD
- CHAMP ZONE: 1.7 MILLION MT 3.5% LEAD, 4.3% ZINC, 46 G/T SILVER
- 5-10 MILLION MT UNDERGROUND POTENTIAL NW OF PIT

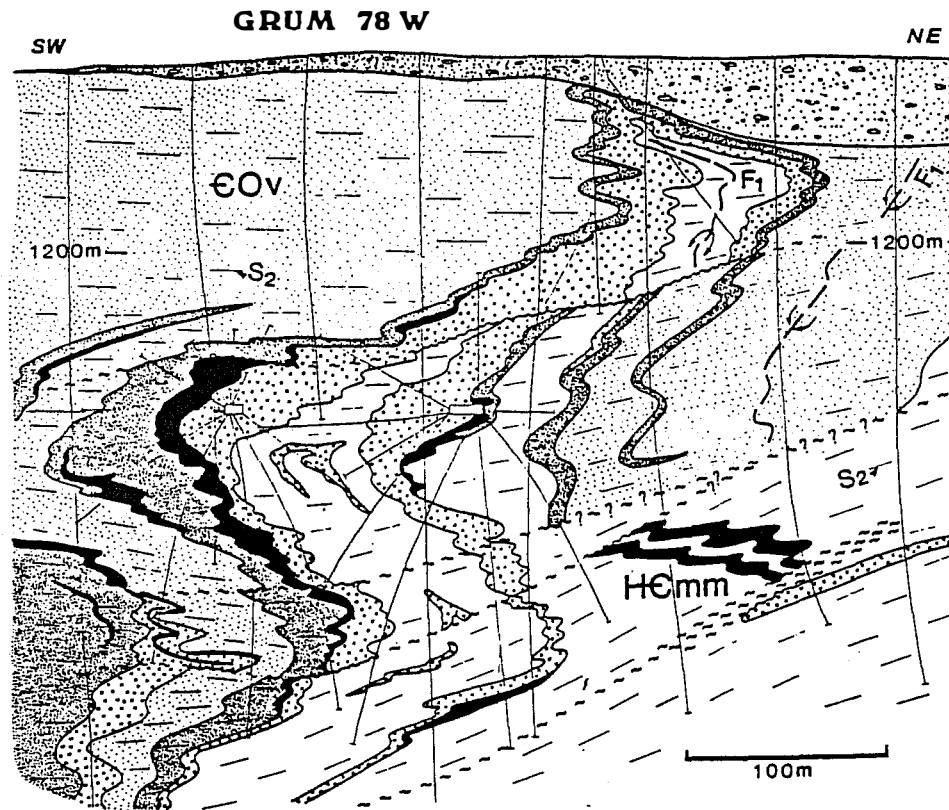





Figure 6. Cross section 78 W through the Grum deposit. The section is close to the northwest limit beyond which the high grade massive sulphides near the underground workings cannot be mined by open pit methods because of high stripping requirements. This ore would be left for underground followup not included in the current mine plan.

-  massive ore
-  quartzose ore
-  graphitic phyllite

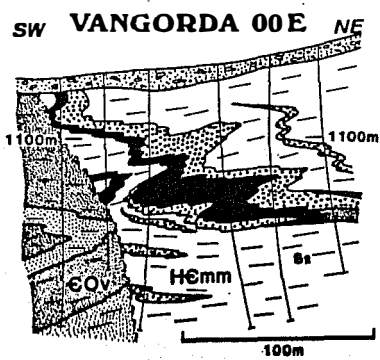
3. VANGORDA GEOLOGY AND RESERVES




(SEE FIGURE 7)

- SIMILIAR, SMALLER, SHALLOWER THAN GRUM
- LOW STRIPPING RATIO
- OXIDATION POTENTIAL
- PRIMARILY BARITE BEARING MASSIVE SULPHIDE

RESERVES

- NEW RESERVES CALCULATED BY CURRAGH FROM PRE-EXISTING DATA
- 7.5 MILLION mt (4% COMBINED CUTOFF GRADE) 3.9% LEAD, 4.9% ZINC, 53 G/T SILVER, 69 G/T GOLD
- GOLD ENRICHED ZONE BENEATH LEAD-ZINC ZONE
- FILL-IN DRILLING DESIREABLE



-  massive ore
-  quartzose ore
-  graphitic phyll.

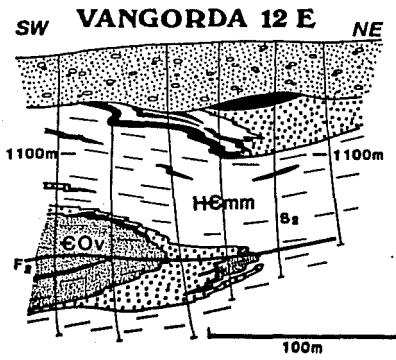


Figure 7. Cross sections through the Vangorda deposit. Note the difference in size and depth of burial between Vangorda and the other deposits

4. OTHER RESERVES AND POTENTIAL

- DY - 21.0 MILLION MT (9% COMBINED CUTOFF GRADE) 5.5% LEAD,
 6.7% ZINC, 84 G/T SILVER, .95 G/T GOLD
- DEEP DEPOSIT, OPEN PIT NOT POSSIBLE
- UNDERGROUND EXPLORATION WILL BE REQUIRED
- SWIM - 4.3 MILLION MT (6% COMBINED CUTOFF GRADE) 3.8% LEAD,
 4.7% ZINC, 51 G/T SILVER
- FURTHER EXPLORATION REQUIRED

FURTHER EXPLORATION POTENTIAL

- ON FAVOURABLE TRENDS:
- EXTENSIONS TO GRUM AND DY
- SWIM BASIN
- NW OF FARO
- OTHER AREAS OFF FAVOURABLE TREND

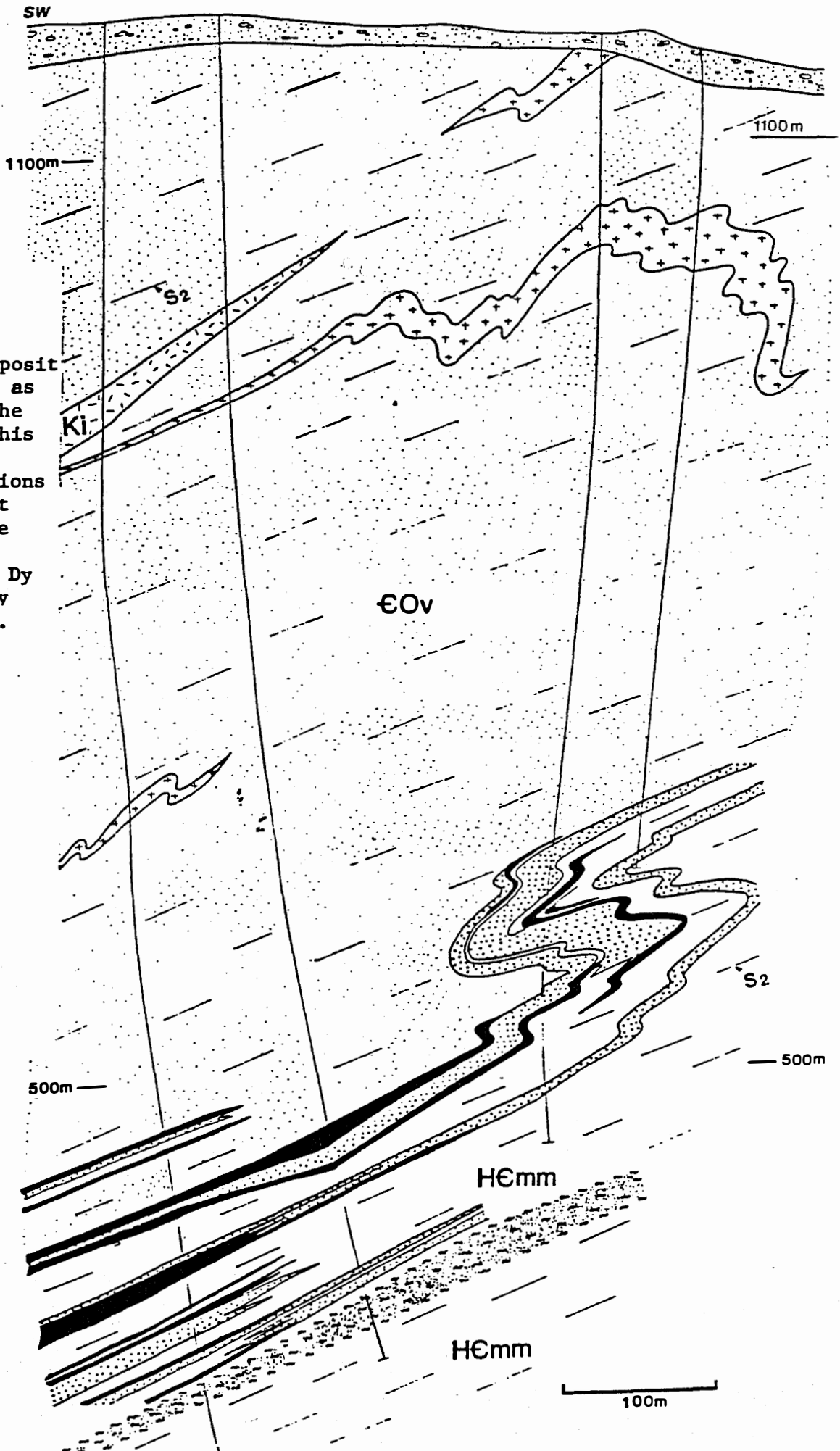
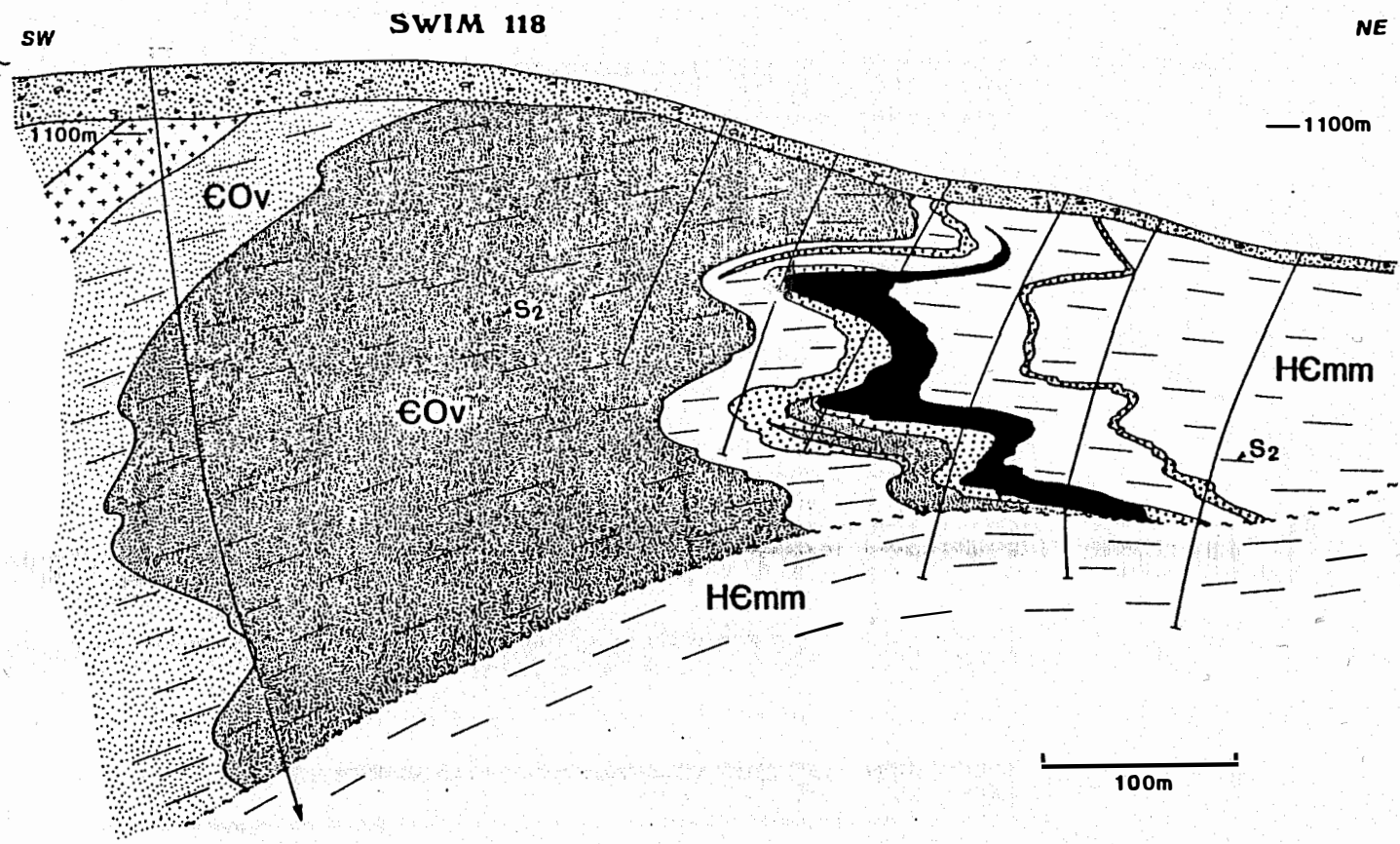


Figure 8

Schematic section through the DY deposit at the same scale as the sections of the other deposits. This is not one of the best drilled sections of the deposit but it illustrates the relative paucity of information at Dy and the difficulty of obtaining more.





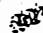
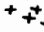
massive ore 
quartzose ore 
graphitic phyll. 
metabasite 

Figure 9. Cross section 118 through the center of the Swim deposit

V INFRASTRUCTURE REQUIRED

ORE HAULAGE

- HEAVY HAUL ROAD 14 KM. VANGORDA PLATEAU TO FARO CONCENTRATOR
- ROAD ALIGNMENT (SEE FIGURE 10)
- FILL ROAD CONSTRUCTIONS USING WASTE ROCK
- NORTH FORK ROSE CREEK ROCK DRAIN CAUSEWAY
- COMPLETION DATE 3RD QUARTER 1989

POWER

- REQUIRED FOR SHOVELS, DRILLS AND SERVICING FACILITY
- 10 MVA 138 KV/34.5 KV SUBSTATION
- 5 KM 34.5 KV LINE
- 10 MVA 34.5/KV/4.16 KV SUBSTATION

VANGORDA CREEK DIVERSION (FIGURE 11)

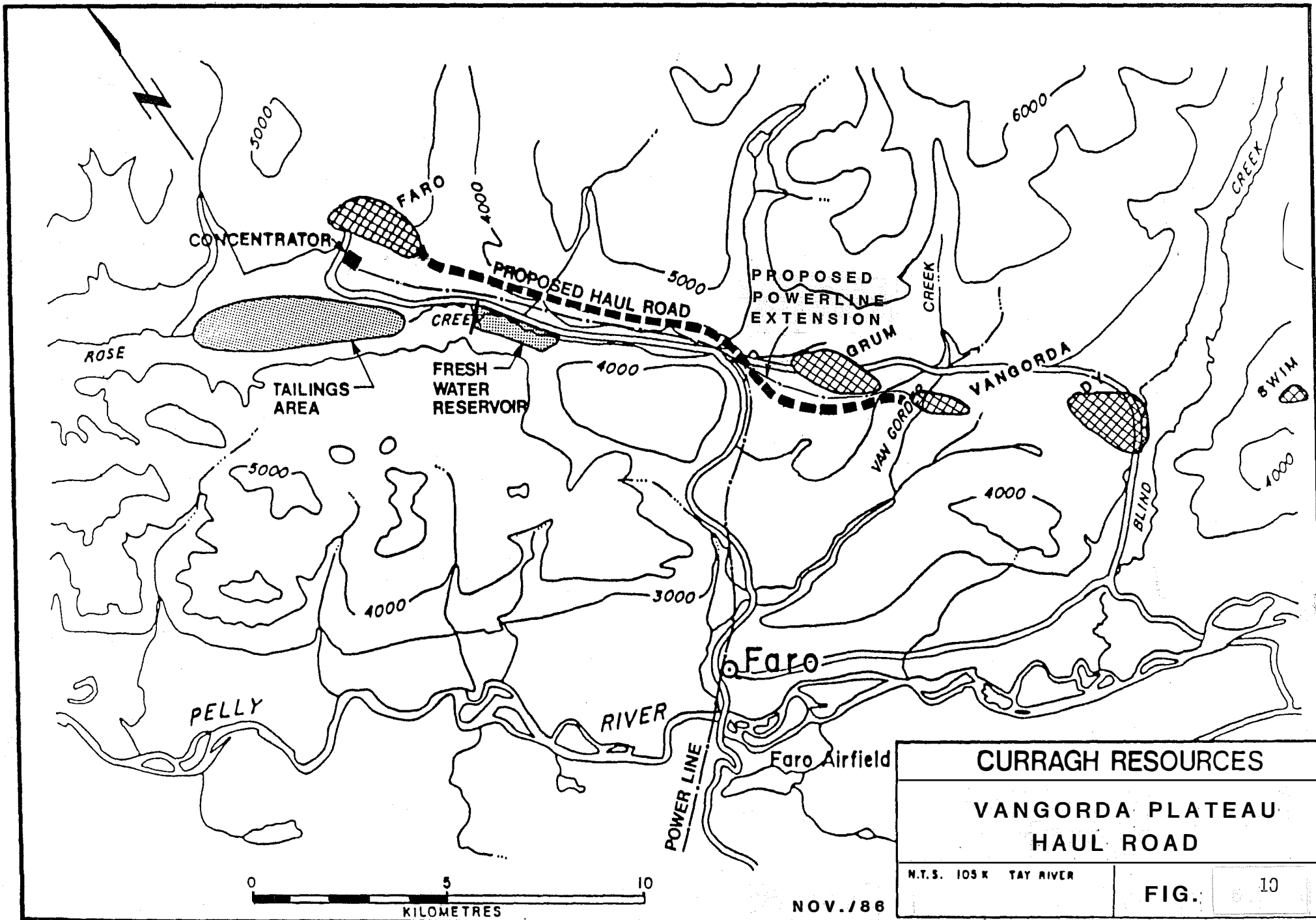
- SEE FIGURE 12 VANGORDA PIT/WASTE DUMPS & DIVERSION
- DESIGN
- REGULATORY APPROVAL YTWB

GRUM AREA WATER CONTROL

- PIT DEWATERING
- SURFACE DIVERSION DITCHES
- WATER TREATMENT MAY BE REQUIRED

BUILDINGS

- MINIMAL REQUIREMENT PROXIMITY OF FARO FACILITY
- LUBE AND FUEL STATION
- TWO BAY FACILITY (MINOR SERVICING ONLY)



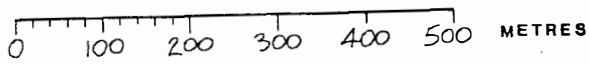
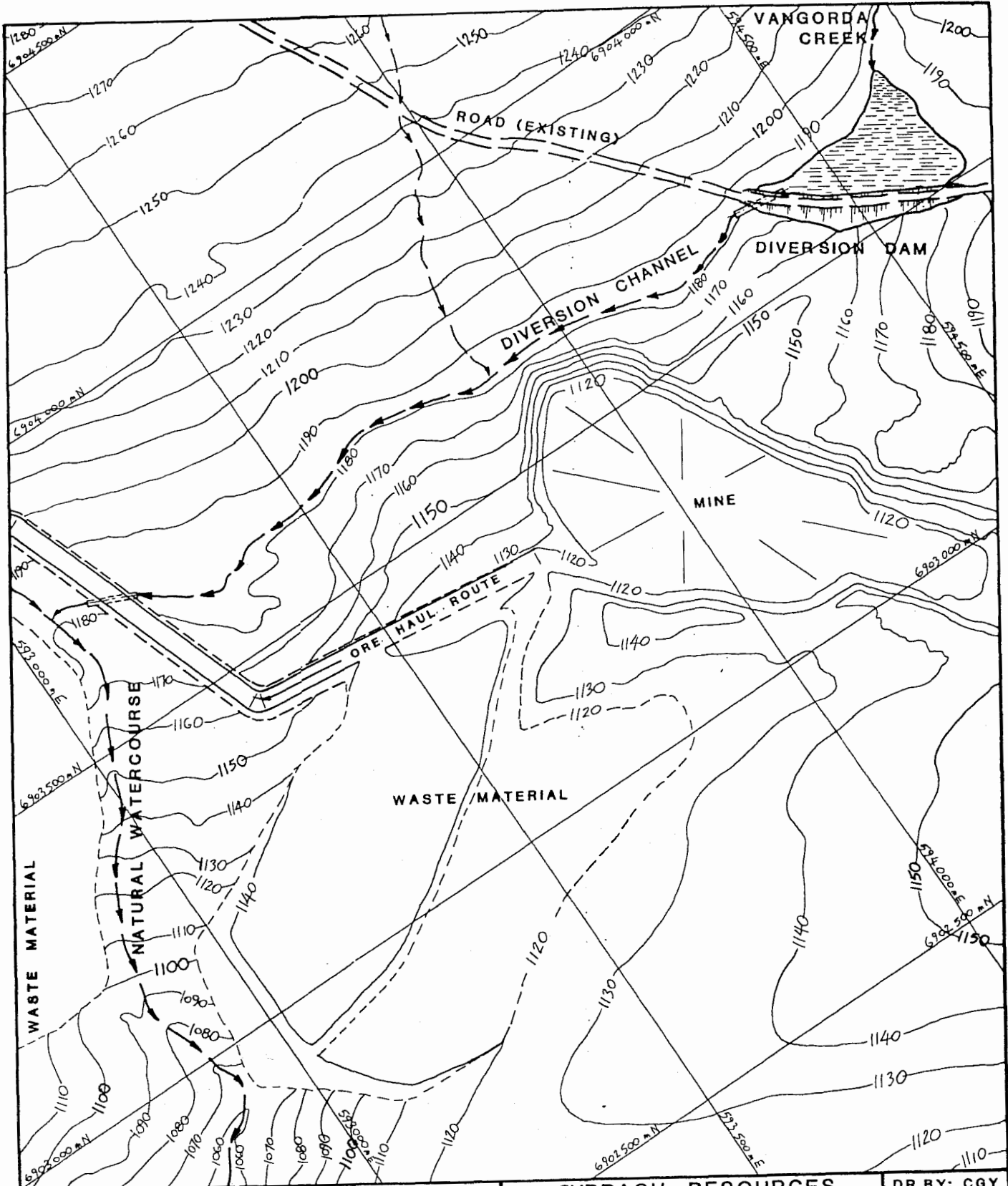
CURRAGH RESOURCES

**VANGORDA PLATEAU
HAUL ROAD**

N.T.S. 105 K TAY RIVER

FIG. 10

NOV. / 86



CURRAGH RESOURCES

PROPOSED
VANGORDA CREEK DIVERSION

DR. BY: CGY

NOV./86

FIGURE 12

VI MINE DESIGN AND ORE RESERVES

VANGORDA PIT

(SEE FIGURE 14)

1. GEOTECHNIAL

- FOLIATION DIPPING 23-27° TO SW
- IMPORTANT FACTOR FOR NE WALL SLOPE
 - NE WALL 40° SLOPE
 - SW WALL 45° SLOPE

FURTHER INFORMATION REQUIRED:

- DETERMINE ORIENTATION OF FOLIATION
- GROUNDWATER CONDITIONS AS AFFECTED BY VANGORDA CREEK DIVERSION

2. OVERBURDEN

- GLACIAL TILL 2 TO 30 M DEPTH
- OVERBURDEN SLOPES 35°

3. PIT DESIGN CONSIDERATIONS

- GEOTECHNICAL PARAMETERS
- MOST ECONOMIC UTILIZATION OF ORE CONSISTENT WITH:
 - SAFETY OF OPERATIONS
 - FURTHER DEVELOPMENT OF RESERVES
 - ENVIRONMENTAL IMPACT

4. ORE RESERVES

- 4% COMBINED LEAD + ZINC CUTOFF GRADE
- 95% RECOVERY 15% DILUTION
 - WASTE - 21.5 MILLION MT
 - ORE - 6.46 MILLION MT
 - 3.5% LEAD
 - 4.5% ZINC
 - 49 G/T SILVER
 - 0.59 G/T GOLD

5. WASTE DUMPS

FARO OPEN PIT

PIT DESIGN

- DESIGN FOLLOWS 1985 KILBORN DESIGN
- SEQUENCING OPTIMIZED SINCE 1985
- MINING RATE INCREASED SINCE 1985
- 4 PHASES, NW TO SE

ORE RESERVES

- ORE RESERVES AS OF APRIL 1, 1987
 - 4% CUTOFF
 - 10% WASTE DILUTION
 - 95% MINING RECOVERY

WASTE - 53.6 MILLION TONNES

ORE - 20.6 MILLION TONNES

- 2.8% LEAD

- 4.3% ZINC

- 35 G/T SILVER

- 0.10 G/T GOLD

FARO UNDERGROUND

MINE DESIGN

- ROOM AND PILLAR METHOD
- DEVELOPED BY RAMP FROM ZONE 1 PIT
- 500,000 TONNES PER YEAR MINED
- UNDERGROUND MINING PROBABLY CONTRACTED
- STANDARD METHOD - IN USE AT ELLIOT LAKE
- VENTILATION AND EMERGENCY ESCAPE PROVISIONS
CONFORMING TO ALL REGULATIONS
- SURFACE HAULAGE OF ORE TO MILL BY OPEN PIT TRUCKS

ORE RESERVES

- NEW POLYGONAL CALCULATION BASED ON EXISTING DATA
- 10% WASTE DILUTION
- 70% RECOVERY OF GEOLOGIC RESERVES
- ORE: 2.0 MILLION TONNES
11.6% COMBINED LEAD AND ZINC

GRUM PIT

(SEE FIGURE 15)

1. GEOTECHNICAL

- FOLIATION 180° DIPPING 34° TO SW
- FOLIATION DIP IMPORTANT FOR NE WALL SLOPE
 - NE WALL 40° SLOPE
 - SW WALL 45° SLOPE

FURTHER INFORMATION REQUIRED ON:

- ORIENTATION OF FOLIATION
- LOCAL GROUNDWATER CONDITIONS

2. OVERBURDEN

- GLACIAL TILL
- 10 TO 100 M (THICKNESS IN NE)
- OVERBURDEN SLOPES 35°

3. PIT DESIGN CONSIDERATIONS

- GEOTECHNICAL PARAMETERS
- MOST ECONOMIC UTILIZATION OF ORE CONSISTENT WITH:
 - SAFETY OF OPERATIONS
 - FURTHER DEVELOPMENT OF RESERVES
 - ENVIRONMENTAL IMPACT

4. ORE RESERVES

- 4% COMBINED LEAD ZINC CUTOFF GRADE
- 95% RECOVERY - 15% DILUTION
- WASTE - 230.7 TONNES
- ORE - 24.99 MILLION MT
 - 3.0% LEAD
 - 5.0% ZINC
 - 49 G/T SILVER
 - 0.81 G/T GOLD

5. WASTE DUMPS

- SEE FIGURE 11 FOR LOCATION
- CLOSE TO PIT EXIT
- ONE DRAINAGE AREA

6. WATER QUALITY MANAGEMENT

- CAREFUL PLANNING REQUIRED
- SURFACE FLOWS
- GROUNDWATER FLOWS
- POSSIBLE REQUIREMENT FOR SETTLING POND

Project Manpower

With and Without Plateau Development

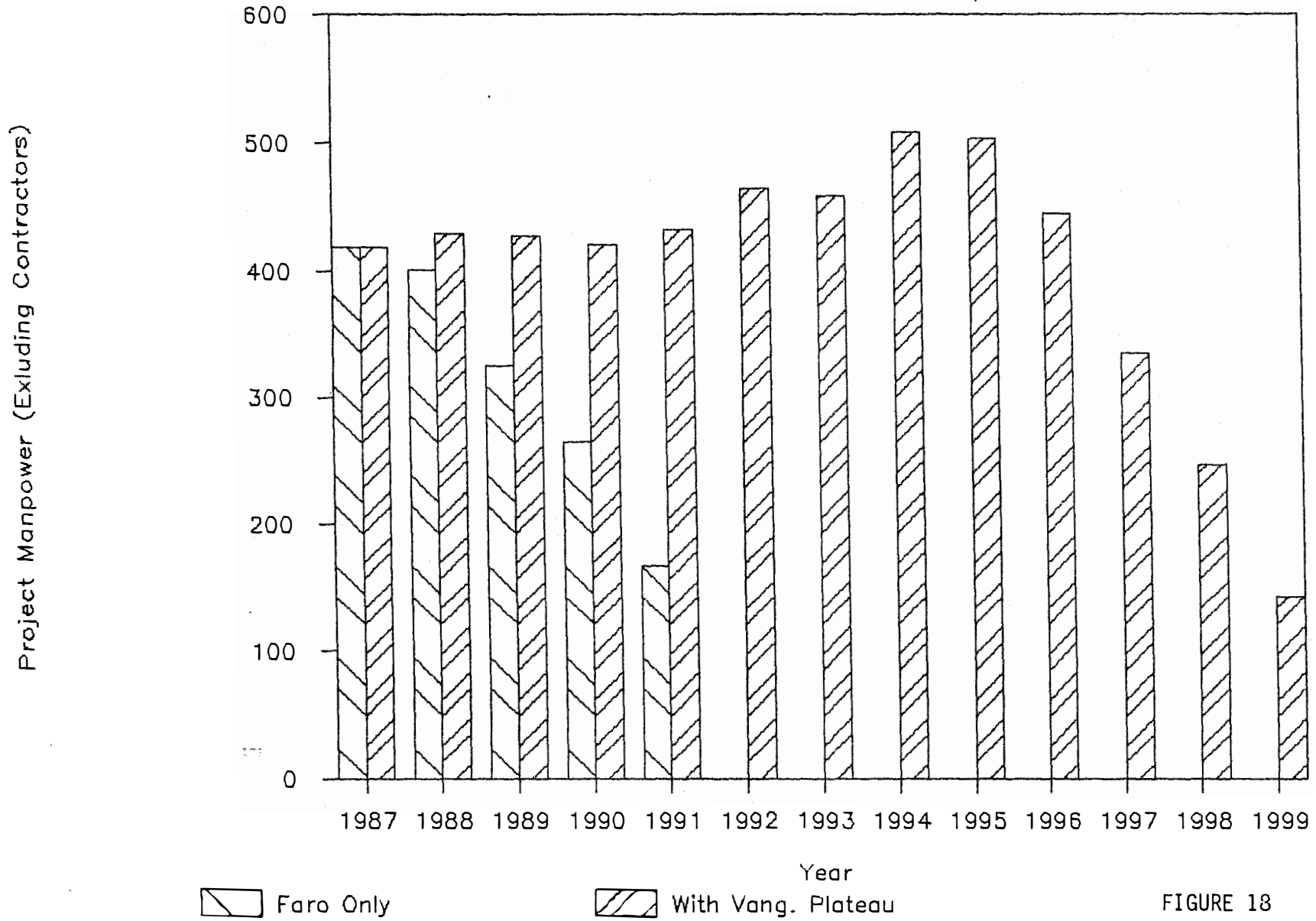


FIGURE 18

Total Material Moved

By Pit

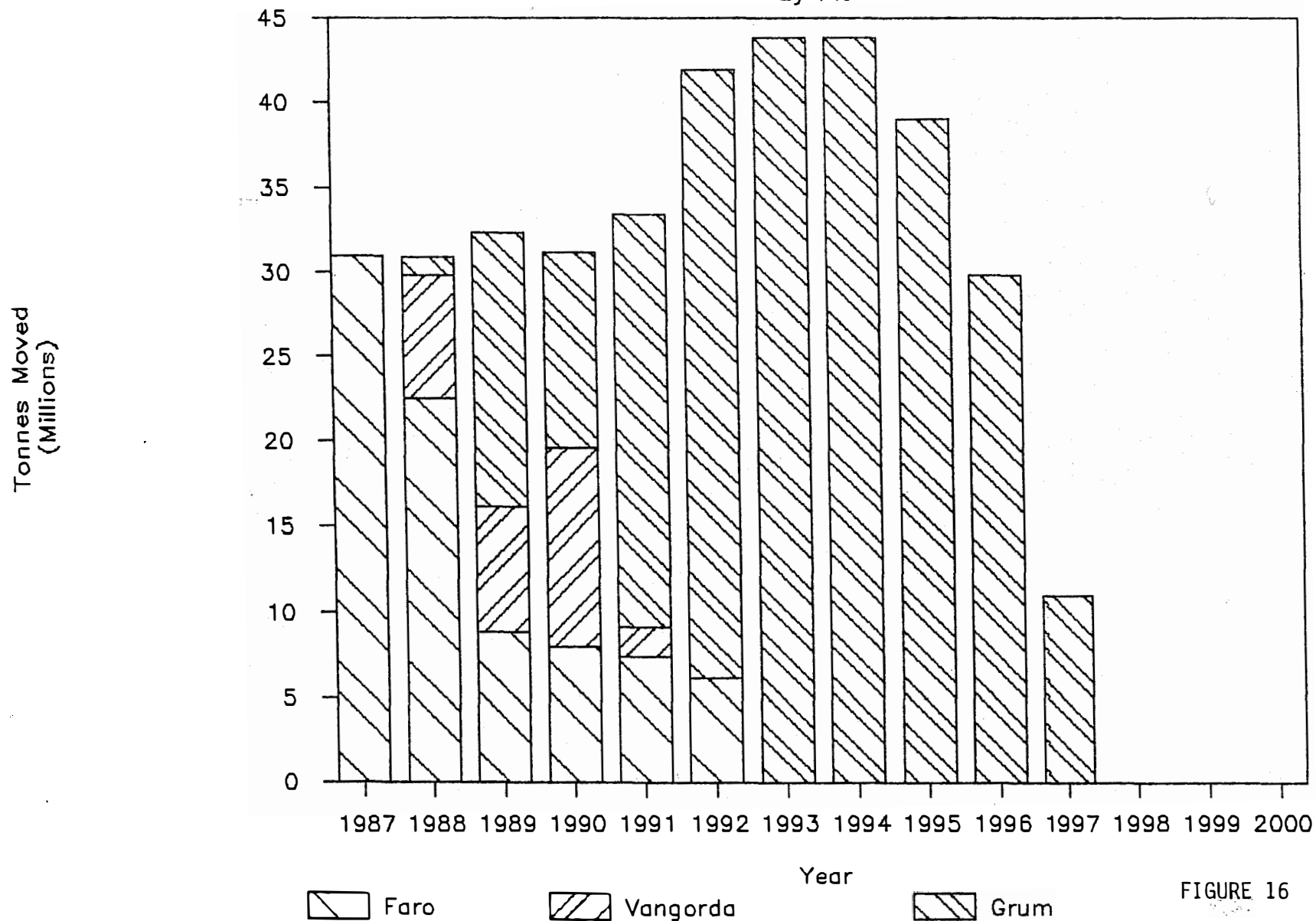


FIGURE 16

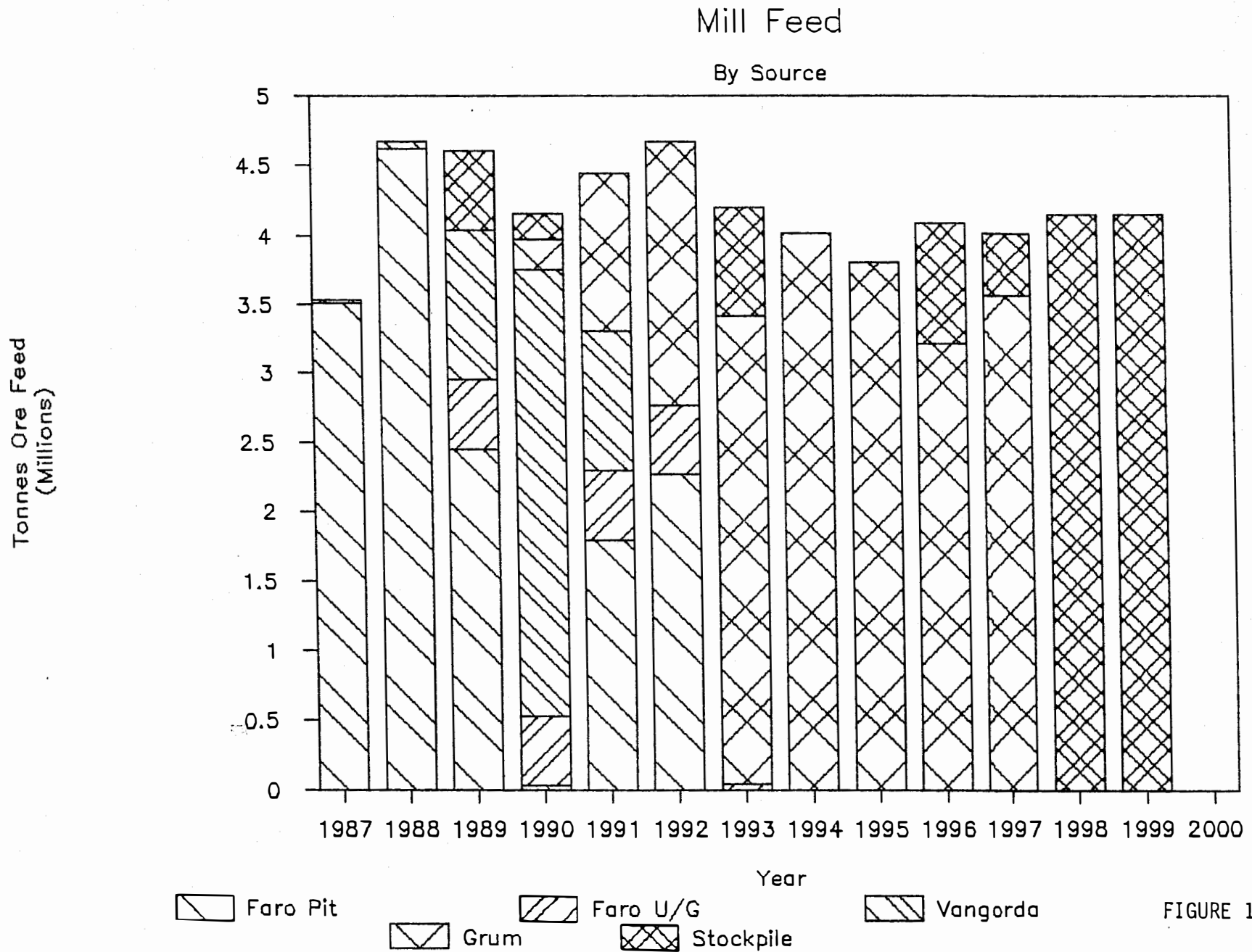


FIGURE 17

VI/ WORK SYSTEMS

UNDERGROUND OPERATIONS

- TRACKLESS JUMBO AND SCOOP TRAM HAULAGE
- BLASTING PER REGULATIONS
- SURFACE HAULAGE BY OPEN PIT TRUCKS
- VENTILATION AND EMERGENCY ESCAPE PROVISIONS
- ROCK BOLTING AS REQUIRED

OPEN PIT OPERATIONS

- WILL BE AS AT FARO OPERATION
- CONVENTIONAL TRUCK-SHOVEL MINING
- CONFORM TO APPLICABLE MINING AND BLASTING REGULATIONS
- BENCH MINING, BENCH HEIGHT TO BE DETERMINED BY:
 - DIGGING CAPABILITY IN WASTE
 - EFFECTIVE UTILIZATION OF ORE
 - CONFORM TO REGULATIONS
- HAUL ROAD MAINTENANCE
 - DUST SUPPRESSION
- ROTARY BLASTHOLE DRILLS
 - DUST SUPPRESSION
- BLASTING - AN/FO AND SLURRY EXPLOSIVES
 - UTILIZE BULK STORAGE FACILITIES

WORK SCHEDULE

- 24 HOURS 7 DAYS/WEEK
- 12 HOUR SHIFT 6 DAY ROTATION

VIII/ PRODUCTION SCHEDULE

(SEE FIGURE 3)

IX ENVIRONMENTAL AND LAND USE PLANNING

1. INTRODUCTION

- MINIMAL ENVIRONMENT IMPACTS VERSUS NEW MINE IN A NEW REGION
- UTILIZATION OF EXISTING
 - WATER RESERVOIR
 - MILL
 - TAILINGS DISPOSAL FACILITY
 - TOWNSITE
 - TRANSPORTATION AND POWER INFRASTRUCTURE
- DEVELOPED GEOLOGICAL AND ENVIRONMENTAL DATA BASE
- MINIMAL LAND USE CONFLICTS

2. REGULATORY REQUIREMENTS

1. NORTHERN INLAND WATER ACT
2. QUARTZ MINING ACT
3. ALL APPLICABLE MINING AND SAFETY LEGISLATION
4. FISHERIES ACT
5. SURFACE LEASE

3. ENVIRONMENTAL BASELINE DATA

- STUDIES
 - KERR - AEX JOINT VENTURE 1975-77
 - CYPRUS ANVIL 1980-81
- HYDROLOGY
- CLIMATE
- LANDFORMS, SOILS AND VEGETATION
- WILDLIFE
- WATER QUALITY
- BENTHIC ECOLOGY

- FISH

ENVIRONMENTAL/LAND USE CONCERNS

HAUL ROAD

- STREAM CROSSINGS
- CONSTRUCTION MATERIALS
- WILDLIFE MIGRATION

VANGORDA CREEK DIVERSION

- FISHERIES IMPACT
- WATER QUALITY
- ABANDONMENT

WASTE DUMPS

- MATERIALS
- SURFACE WATER FLOWS

PIT DEWATERING

- COLLECTION
- TREATMENT
- WATER QUALITY STANDARDS

ABANDONMENT

- WATER QUALITY
- WATER DIVERSION STRUCTURES
- WASTE DUMPS STABILITY

DUST AND NOISE

FARO WATER SUPPLY

1987-88 ENVIRONMENTAL PROGRAM

- UPDATING REQUIRED
- FISH HABITAT ASSESSMENT
- WILDLIFE

SUMMARY AND CONCLUSIONS:

MONTREAL ENGINEERING

1. NO UNDULY SENSITIVE BIOPHYSICAL ELEMENTS
2. NEED TO ADDRESS SHEEP MIGRATION

CURRAGH RESOURCES REQUIREMENTS

1. CONTINUE CONCENTRATE PRODUCTION
2. MAINTAIN HIGH PRODUCTIVITY RATES AND LOW UNIT PRODUCTION COSTS
3. ONGOING COOPERATION FROM ALL INTERESTED PARTIES

PROJECT BENEFITS

TO CURRAGH:

- ONGOING CASH FLOW AND CONTINUED EXISTANCE
- PROFITS FOR SHAREHOLDERS

TO YUKON:

- INCREASED EMPLOYMENT
- SUBSTANTIAL CAPITAL INVESTMENT
- GOVERNMENT REVENUES
- UTILIZATION OF EXISTING INFRASTRUCTURE
- ECONOMIC SPIN-OFF

TO CANADA:

- GOVERNMENT REVENUES
- EMPLOYMENT
- ECONOMIC SPIN-OFFS
- IMPROVED BALANCE OF TRADE

ANNUAL MINING SCHEDULE TABLE 1

TABLE 1
CURRAGH RESOURCES
VANGORDA PLATEAU - SCRAPER CASE

DESCRIPTION	1987	1988	1989	1990	1991	1992	1993	1994	1995	1996	1997	1998	1999	2000	TOTAL
FARD PIT															
All Waste	20,375,000	15,794,350	5,511,620	7,832,603	4,966,372	2,341,599	0	0	0	0	0	0	0	0	56,821,544
Ore	3,792,000	6,739,025	3,336,756	121,506	2,431,292	3,800,099	0	0	0	0	0	0	0	0	20,220,678
FARD U/S															
Ore	0	0	500,007	500,007	500,007	500,007	13,633	0	0	0	0	0	0	0	2,013,661
VANGORDA PIT															
All Waste	0	6,665,590	6,029,032	8,132,170	660,575	0	0	0	0	0	0	0	0	0	21,487,367
Ore	0	0	1,836,991	3,536,416	1,085,358	0	0	0	0	0	0	0	0	0	6,458,765
GRUM PIT															
All Waste	0	1,068,143	16,139,767	11,303,990	22,471,232	33,502,418	40,037,474	39,283,190	34,351,328	26,150,241	7,014,706	0	0	0	231,322,489
Ore	0	0	52,328	268,926	1,766,554	2,274,337	3,823,196	4,577,467	4,677,002	3,628,173	3,925,407	0	0	0	24,993,390
SCRAPER FLEET															
Overburden Mined	0	8,000,000	8,000,000	8,000,000	6,000,000	6,000,000	4,000,000	2,643,153	0	0	0	0	0	0	42,643,153
TOTAL MINED															
Waste	20,375,000	23,528,083	27,680,419	27,268,763	28,098,179	35,844,017	40,037,474	39,283,190	34,351,328	26,150,241	7,014,706	0	0	0	309,631,400
Ore	3,792,000	6,739,025	5,726,082	4,426,855	5,783,211	6,574,443	3,836,829	4,577,467	4,677,002	3,628,173	3,925,407	0	0	0	53,686,494
TOTAL	24,167,000	30,267,108	33,406,501	31,695,618	33,881,390	42,418,460	43,874,303	43,860,657	39,028,330	29,778,414	10,940,113	0	0	0	363,317,894

OPERATING EQUIPMENT

(SEE TABLE 2)

- OPEN PIT EQUIPMENT FOLLOWS FARO EXPERIENCE
- MODIFICATIONS TO
 - REHANDLE STOCKPILE ORE
 - REHANDLE ALL GRUM AND VANGORDA ORE
- PREPRODUCTION STRIPPING OF UNCONSOLIDATED OVERBURDEN AT GRUM AND VANGORDA BY SCRAPERS
- UNDERGROUND MINING EQUIPMENT SUPPLIED BY CONTRACTOR

TABLE 2

OPERATING EQUIPMENT SUMMARY

	<u>1987</u>	<u>1988</u>	<u>1989</u>	<u>1990</u>	<u>1991</u>	<u>1992</u>	<u>1993</u>	<u>1994</u>	<u>1995</u>	<u>1996</u>	<u>1997</u>	<u>1998</u>	<u>1999</u>
Shovels:													
Marion	1.0	0.0	0.3	1.0	1.0	1.0	1.0	1.0	1.0	1.0	0.1	0.0	0.0
P & H 2100	3.0	2.8	3.0	3.0	3.0	3.0	3.0	3.0	3.0	2.7	0.8	0.0	0.0
Shovel Years	4.0	2.8	3.3	4.0	4.0	4.0	4.0	4.0	4.0	3.7	0.9	0.0	0.0
Trucks													
Euclid 154 tonne	12	12	12	12	12	12	16	20	22	22	11.6	4.9	0
Wabco 109 Tonne	16	5.8	6.9	9.9	16	16	7.5	12.9	15.2	12.2	0	0.7	4.1
Front End Loader	0.4	0.8	1.2	1.6	1.3	1.3	1.5	1.5	1.4	1.6	1.5	1.6	1.6
Dozer Tracked	4.0	2.8	3.3	4.0	4.0	4.0	4.0	4.0	4.0	3.7	0.9	0.0	0.0
Dozer Wheeled	2.0	1.4	1.6	2.0	2.0	2.0	2.0	2.0	2.0	1.9	0.4	0.0	0.0
Grader	2.0	1.4	2.6	3.0	3.0	3.0	3.0	3.0	3.0	2.9	1.4	1.0	1.0

MINING SCHEDULE PARAMETERS

(SEE TABLE 3)

1. CONSTANT MILL FEED OF THE BEST POSSIBLE ORE.
2. 13,500 MTD MILL FEED FOR FARO ORE
11,000 MTD MILL FEED FOR VANGORDA PLATEAU ORE
3. 1,600 MTD CONCENTRATE PRODUCTION
4. MINIMIZE ADVANCED STRIPPING
5. MAINTAIN EXISTING EQUIPMENT FLEET SIZE

MILLING

(SCHEDULE TABLE 3)

EXISTING TAILINGS AREA CAN ACCOMODATE ALL TAILINGS. TAILINGS DAM
RAISE BEFORE 1992.

FARO PIT TO BE USED FOR TAILINGS AFTER 1991.

- IF NOT, RAISE TAILINGS DAM IN 1994-95.

TABLE 3

MILL SUMMARY

	<u>1987</u>	<u>1988</u>	<u>1989</u>	<u>1990</u>	<u>1991</u>	<u>1992</u>	<u>1993</u>	<u>1994</u>	<u>1995</u>	<u>1996</u>	<u>1997</u>	<u>1998</u>	<u>1999</u>	<u>2000</u>	<u>TOTAL</u>
MILL FEED															
Tonnes	3,533,005	4,665,821	4,607,373	4,154,398	4,439,760	4,666,176	4,174,324	4,015,000	3,800,000	4,088,273	4,015,000	4,147,856	4,143,903	0	54,450,887
Z Pb+Zn	8.20	7.98	8.50	8.95	7.84	8.36	7.51	8.92	9.58	8.38	8.30	4.08	4.38	0.00	
CONCENTRATE PRODUCED															
Lead Conc Tonnes	153,930	191,910	216,492	242,594	186,024	182,080	148,518	181,190	180,814	171,528	162,821	74,775	81,130	0	2,173,808
Zinc Conc Tonnes	269,269	349,605	362,433	320,395	324,392	396,871	301,535	345,518	361,435	326,565	318,959	140,514	158,579	0	3,976,071
Total Conc Tonnes	423,200	541,516	578,925	562,989	510,415	578,951	450,052	526,708	524,249	498,093	481,781	215,289	239,709	0	6,149,878

MANPOWER

(SEE TABLE 4)

TABLE 4

CURRAGH RESOURCES
VANGORDA PLATEAU PROJECT
MANPOWER SUMMARY

	1987	1988	1989	1990	1991	1992	1993	1994	1995	1996	1997	1998	1999	2000	PROJECT TOTAL
	****	****	****	****	****	****	****	****	****	****	****	****	****	****	****
HOURLY MANPOWER *****															
MINE OPERATIONS	143	103	116	133	151	151	138	158	179	167	66	31	22	0	1558
MINE MAINTENANCE	89	80	87	97	107	107	100	112	123	116	52	33	25	0	1129
MINE TOTAL	232	183	203	231	258	258	238	270	302	283	118	64	47	0	2687
MILL OPERATIONS	60	60	60	60	60	60	60	60	60	60	60	60	30	0	750
MILL MAINTENANCE	48	48	48	48	48	48	48	48	48	48	48	48	24	0	600
MILL TOTAL	108	108	108	108	108	108	108	108	108	108	108	108	54	0	1350
MATERIALS MANAGEMENT	10	10	10	10	10	10	10	10	10	10	10	10	10	0	130
TOTAL HOURLY	350	301	321	349	376	376	356	388	420	401	236	182	111	0	4167
SALARIED MANPOWER *****															
MINE	36	36	36	36	36	36	36	36	36	36	29	9	4	0	402
MILL	30	30	30	30	30	30	30	30	30	30	30	30	15	0	375
CONTROLLERS GROUP	13	13	13	13	13	13	13	13	13	13	13	13	7	0	163
MATERIALS MANAGEMENT	5	5	5	5	5	5	5	5	5	5	5	5	3	0	63
HUMAN RESOURCES	8	8	8	8	8	8	8	8	8	8	8	8	4	0	100
SALARIED TOTAL	92	92	92	92	92	92	92	92	92	92	85	65	32	0	1102
PROJECT TOTAL *****															
(EXCLUDING CONTRACTORS)	442	393	413	441	468	468	448	480	512	493	321	247	143	0	5269

SUMMARY

1. EMPLOYMENT (SEE TABLE 4)

3700 PERSON YEARS OF EMPLOYMENT 1988-1999

2. ANNUAL EXPENDITURES OF \$100 MILLION

3. CAPITAL INVESTMENT OF \$60 MILLION

4. PRODUCTION

WASTE - 309.6 MILLION TONNES

ORE - 53.7 MILLION TONNES

LEAD CONCENTRATE - 2.2 MILLION TONNES

ZINC CONCENTRATE - 4.0 MILLION TONNES

5. PLAN INCLUDES

FARO OPEN PIT

VANGORDA OPEN PIT

GRUM OPEN PIT

FARO UNDERGROUND (SUPPLEMENT MILL FEED)

6. 40 MILLION TONNES OF FURTHER RESERVES FOR OPERATIONS BEYOND 1999.

7. IMPROVED ECONOMIC CONDITIONS COULD RESULT IN THE EXPANSION OF:

FARO OPEN PIT

VANGORDA OPEN PIT

GRUM OPEN PIT

8. PROJECT WILL USE EXISTING EQUIPMENT

- SOME NEW TRUCKS

- REPLACEMENT OF SUPPORT EQUIPMENT

9. USE EXISTING INFRASTRUCTURE

- MILL
- SHOPS AND OTHER FACILITIES
- OFFICES
- CONCENTRATE AND SUPPLY TRANSPORTATION SYSTEM
- HIGHWAYS
- PORT FACILITIES
- POWER