

LOCATION: roughly 2 km N-NW of Mt. Nansen camp  
: roughly 2 km W of J. BILL, 4-5 km S of  
Vic Trenches

ACCESS: Mt. Nansen road

006608

GEOLOGY: primarily felsic, quartz monzonite, rhyodacite (quartz)  
feldspar porphyry, lesser monzonite and quartz diorite  
I believe the intrusives to be part of the "young"  
suite and those marked as "young" by Dave to  
be part of the same intrusive

- andesite porphyry and pyroclastics occur primarily  
in the N E SW end of the claims
- a small body of basement schists & gneisses  
occur in the SW corner
- included in the area marked as rhyodacite porphyry  
is "quartz feldspar porphyry" (rhyolite?), quartz  
monzonite & minor andesite
- off the property to the N are northerly trending  
quartz porphyry dykes (rhyolite?)
- 2 strong NE trending faults are indicated from  
airphotos and available mapping. (the W end of  
one of them possibly intersects the J BILL fault).
- 1 strong NW fault extends from near the  
HEUSTIS vein to the most northerly NE fault  
where the NW fault appears to be off set to  
the W of the property
- 4 tourmaline breccia zones (hot spots) cluster  
near the central portion of the claims, two of  
which occur in the rhyodacite porphyry on the  
property
- 1 tourmaline breccia zone occurs ~500 m S of  
the claims, near the NW fault

ALTERATION: alteration found on the claims by Kerr ADD. 1983

- weak to moderate clay alteration of quartz monzonite-quartz
- <sup>diorite</sup> strong silicification in rhyodacite porphyry
- clay & pyrite present in quartz monzonite porphyry

- a 250 m long gossan in "diorite" with strong silicification, sericite, weak Mo  
? (9.2 ppm Sb, 15 ppb Au)  
this gossan occurs near the NE fault that extends from the JBILL, 2 hot spots occur within 200 m from the fault

- ~1 km E of the property tourmaline breccia occurs in rhyolite porphyry
  - at the NE end of the rhyolite is a "strongly altered" zone, strongly silicified & sericitized float was found at the SW end

- 500 m W of the above mentioned rhyolite a moderately to strongly altered gossan, 130 m long, occurs in quartz monzonite

- near the E end of the southern NE fault, local quartz veins & breccia occur in a strongly silicified and sericitized quartz monzonite

- SE of these veins, NE elongated body of rhyolite porphyry & tuffs host the following:

- a 700 m long gossan with quartz stringers & breccia, alteration assemblages varied from pyrite & chlorite to silicification & sericite

- float sample of 95 ppb Au

- local sample with 3.1 ppm Ag, 6.6 ppm Sb

- quartz monzonite further SW was pyritic & weakly sericitized.

- 1500 m W of the claims float of quartz veins in strongly silicified quartz monzonite

OTHER FEATURES / COMMENTS: exposure is generally poor, confined to cut roads & ridges

: the placer camp operation is on a creek draining two of the gossans one of which ran 15 ppb Au

: from the regional areomag. map the claims cover a "low" .... as do the VIC trenches, the SIZZLER M.C. the Shadow M.C. (where high Au values in silicified zones have been found).

PREVIOUS WORK: two trenches, one in rhyodacite porphyry one at the 130 m long gossan in quartz monzonite

: one DDH, collared in rhyodacite porphyry on the E side of one trench

CONCLUSION: ground is definitely worth acquiring

- felsic volcanics & intrusives have good potential as hosts (VIC, DIC, Brown-McDade)

- claims lie on a possible NW extension of the Mt Nansen camp veins,

- two strong NE structures (VIC, on DIC NE structures associated  $\bar{E}$  Sb highs; veins & breccias tend to be easterly on VIC, DIC)

- presence of hot spots & hydrothermal alteration in the immediate area.

- presence of placer

- enhance Kerr field position in the Mt Nansen camp particularly in light of possible future acquisition of the JBill ("field goal")

NOTE THAT : Goulter is not the registered owner of the RAS M.C.

: Goulter owns the MACK lease with no options or transfers registered in Whitehorse  
- if possible MACK should be included in the deal as well

### CLAIM STATUS

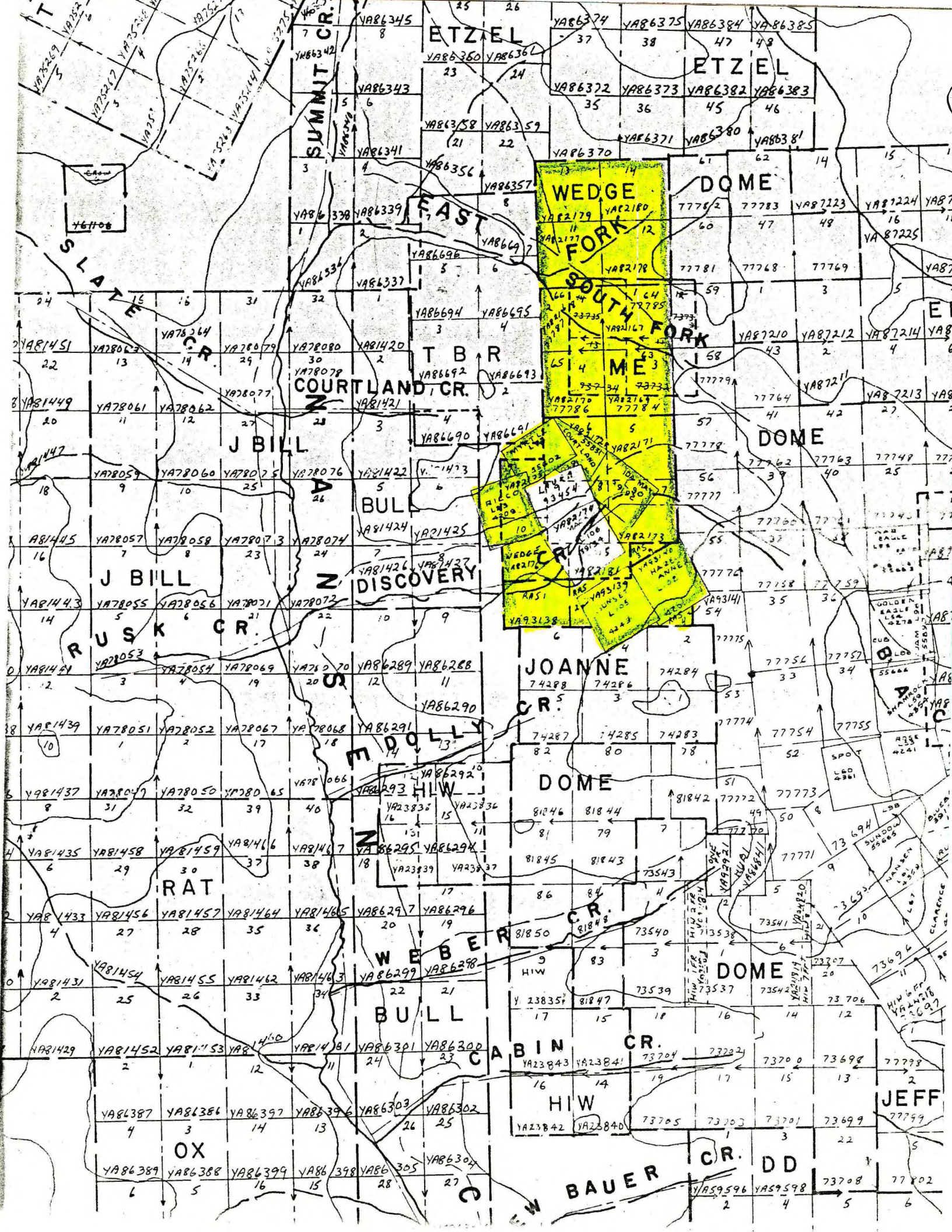
COURTLAND	L 91	55831	} Courtland Frank Goulter - expire Nov 27/98 - optioned to Prochem Ltd in 1984, agreement recorded in 1985
IDA MAY	L 90	39192	
MYRTLE	L 25	35602	
RICCO	L 23	4209	
HAZEL ANN	L 102	4210	
SUNSET	L 105	4243	
RAS	YA 93138-40		- Rob Schnieder

WEDGE YA 82171-84 - owned by G. Dickson  
- were to expire sept/85  
- someone else filed work, no transfer or option agreement filed in Whitehorse

Others not in proposal : Laura 9 93454 - Chevron Canada, ~~expire~~  
- expire May 1/86

Mack L106 39134 - C. F. Goulter  
- expire 1998

TBR YA 86690-97 : ARCHER CATHRO  
- expire May 17/86  
- filed under 13.1 of Quartz Mining Act to do with dwellings on the ground.



ETZEL

ETZEL

WEDGE

SOUTH FORK

ME

DOMINE

DOMINE

JOANNE

CR.

DOMINE

WEBER

BULL

CABIN

HIW

BAUER

DOMINE

JEFF

SUMMIT CR.

COURTLAND CR.

RUSK CR.

DISCOVERY

M DOLLY

RAT

OX

DD

SLATE

J BULL

J BULL

J BULL

J BULL

J BULL

J BULL

J BULL

J BULL

BULL

BULL

BULL

BULL

BULL

BULL

BULL

BULL

EAST

T B R

DISCOVERY

M DOLLY

WEBER

BULL

CABIN

HIW

BAUER

WEDGE

SOUTH FORK

ME

JOANNE

CR.

DOMINE

WEBER

BULL

CABIN

HIW

BAUER

DOMINE

DOMINE

JOANNE

CR.

DOMINE

DOMINE

CABIN

HIW

BAUER

GOLDEN

CR.

SPOT

SUNDOG

HANSEN

HIW

JEFF

DD

YAB6345

YAB6343

YAB6341

YAB6339

YAB6337

YAB6335

YAB6333

YAB6331

YAB6329

YAB6327

YAB6325

YAB6323

YAB6321

YAB6319

YAB6317

YAB6315

YAB6313

YAB6311

YAB6309

YAB6307

YAB6305

YAB6303

YAB6301

YAB6299

YAB6297

YAB6295

YAB6293

YAB6291

YAB6289

YAB6287

YAB6285

YAB6283

YAB6281

YAB6279

YAB6277

YAB6275

YAB6273

YAB6271

YAB6269

YAB6267

YAB6265

YAB6263

YAB6261

YAB6259

YAB6257

YAB6255

YAB6253

YAB6251

YAB6249

YAB6247

YAB6245

YAB6243

YAB6241

YAB6239

YAB6237

YAB6235

YAB6233

YAB6231

YAB6229

YAB6227

YAB6225

YAB6223

YAB6221

YAB6219

YAB6217

YAB6215

YAB6213

YAB6211

YAB6209

YAB6207

YAB6205

YAB6203

YAB6201

YAB6199

YAB6197

YAB6195

YAB6193

YAB6191

YAB6189

YAB6187

YAB6185

YAB6183

YAB6181

YAB6179

YAB6177

YAB6175

YAB6173

YAB6171

YAB6169

YAB6167

YAB6165

YAB6163

YAB6161

YAB6159

YAB6157

YAB6155

YAB6153

YAB6151

YAB6149

YAB6147

YAB6145

YAB6143

YAB6141

YAB6139

YAB6137

YAB6135

YAB6133

YAB6131

YAB6129

YAB6127

YAB6125

YAB6123

YAB6121

YAB6119

YAB6117

YAB6115

YAB6113

YAB6111

YAB6109

YAB6107

YAB6105

YAB6103

YAB6101

YAB6099

YAB6097

YAB6095

YAB6093

YAB6091

YAB6089

YAB6087

YAB6085

YAB6083

YAB6081

YAB6079

YAB6077

YAB6075

YAB6073

YAB6071

YAB6069

YAB6067

YAB6065

YAB6063

YAB6061

YAB6059

YAB6057

YAB6055

YAB6053

YAB6051

YAB6049

YAB6047

YAB6045

YAB6043

YAB6041

YAB6039

YAB6037

YAB6035

YAB6033

YAB6031

YAB6029

YAB6027

YAB6025

YAB6023

YAB6021

YAB6019

YAB6017

YAB6015

YAB6013

YAB6011

YAB6009

YAB6007

YAB6005

YAB6003

YAB6001

YAB5999

YAB5997

YAB5995

YAB5993

YAB5991

YAB5989

YAB5987

YAB5985

YAB5983

YAB5981

YAB5979

YAB5977

YAB5975

YAB5973

YAB5971

YAB5969

YAB5967

YAB5965

YAB5963

YAB5961

YAB5959

YAB5957

YAB5955

YAB5953

YAB5951

YAB5949

YAB5947

YAB5945

YAB5943

YAB5941

YAB5939

YAB5937

YAB5935

YAB5933

YAB5931

YAB5929

YAB5927

YAB5925

YAB5923

YAB5921

YAB5919

YAB5917

YAB5915

YAB5913

YAB5911

YAB5909

YAB5907

YAB5905

YAB5903

YAB5901

YAB5899

YAB5897

YAB5895

YAB5893

YAB5891

YAB5889

YAB5887

YAB5885

YAB5883

YAB5881

YAB5879

YAB5877

YAB5875