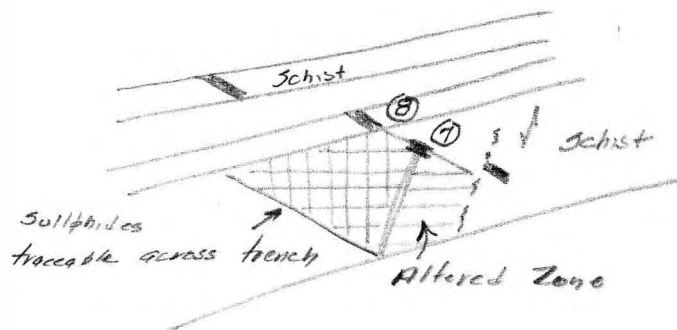


Note:

All trenches are still in the oxidized zone. Veins cannot be persistently traced except by green arsenical alteration. Additional trenching to N.W. and S.E. not examined or sampled.

⑨

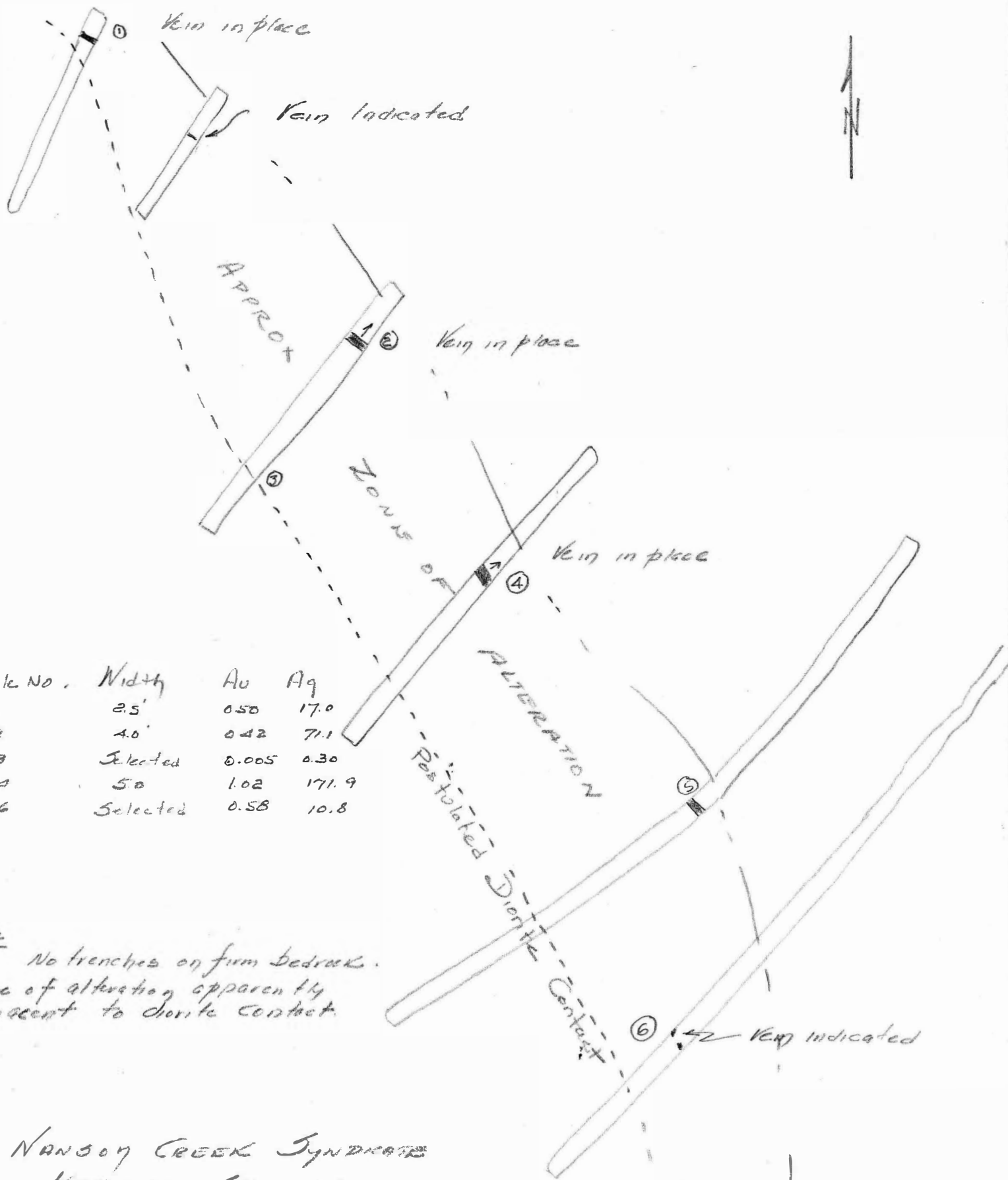
Sample No.	Width	Av	Ag.
7	2.0	1.24	54.5
8	2.0	1.40	30.5
9	9.0	5.70	162.9



NANSON CREEK SYNCLINE
PART OF HUESTIS ZONE
SCALE 1" = 40'

JULY 15 1908.

006626



Sample No.	Width	Au	Ag
1	2.5'	0.50	17.0
2	4.0'	0.42	7.1
3	Selected	0.005	0.30
4	5.0'	1.02	171.9
6	Selected	0.58	10.8

Note
 No trenches on firm bedrock.
 Zone of alteration apparently adjacent to diorite contact.

NANSON CREEK SYNDICATE
 REEBOCK SHOWING
 SCALE 1" = 50'

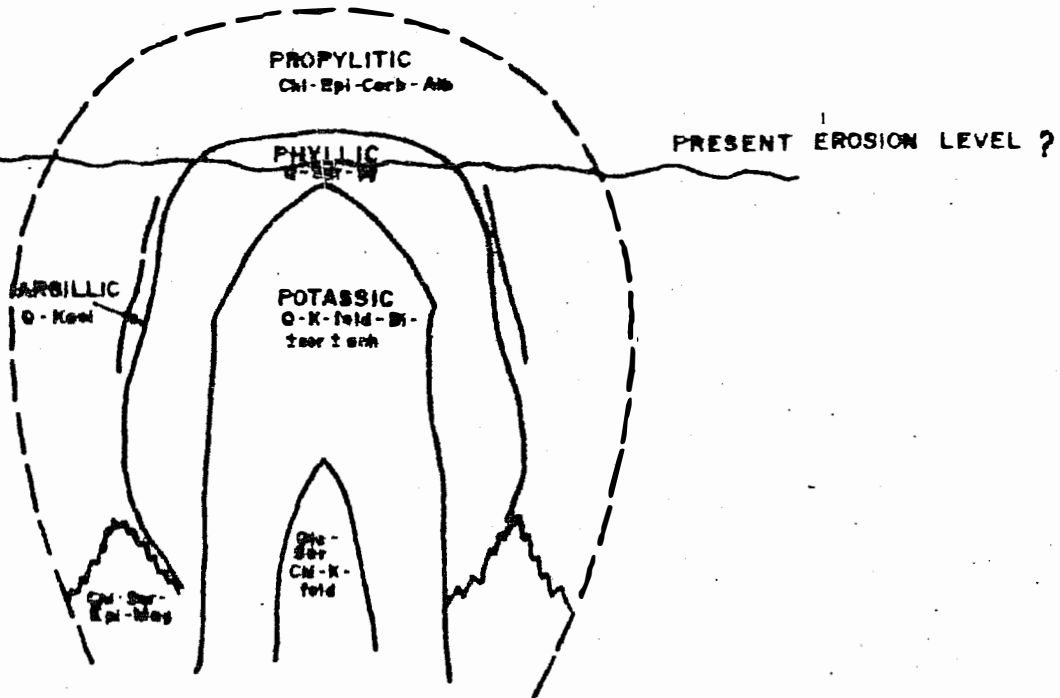


Figure 4. Schematic drawing of alteration zones in porphyry ore deposits. (After Lowell and Guilbert, 1970)