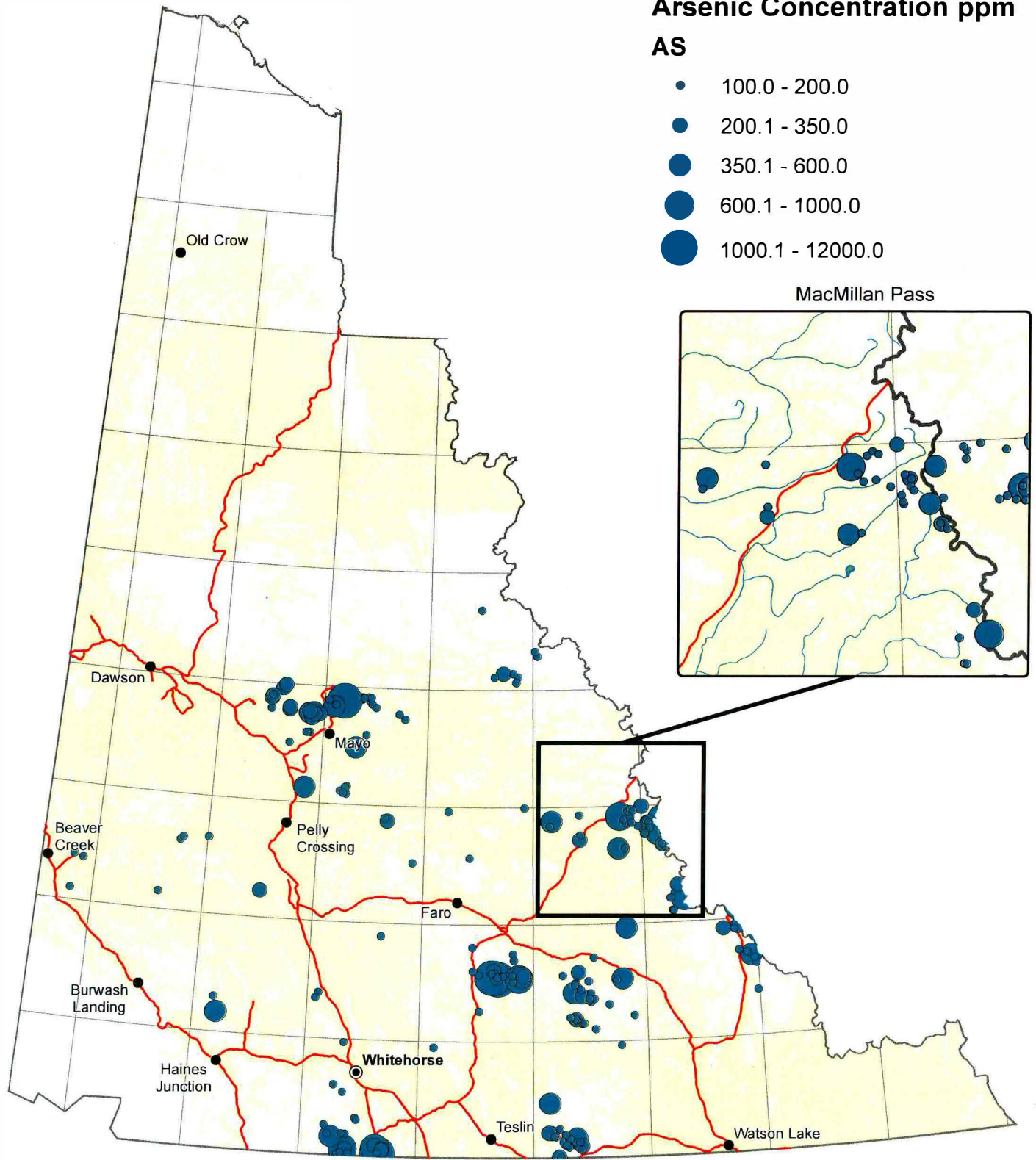



Arsenic Concentration ppm

AS

- 100.0 - 200.0
- 200.1 - 350.0
- 350.1 - 600.0
- 600.1 - 1000.0
- 1000.1 - 12000.0



006783

Macmillan Pass
Scale: 1:5,000,000
 **Gartner Lee**

MPERG
Arsenic Concentration in Stream Sediment
Yukon Territory
Data Source: Yukon Geological Survey

Figure 1