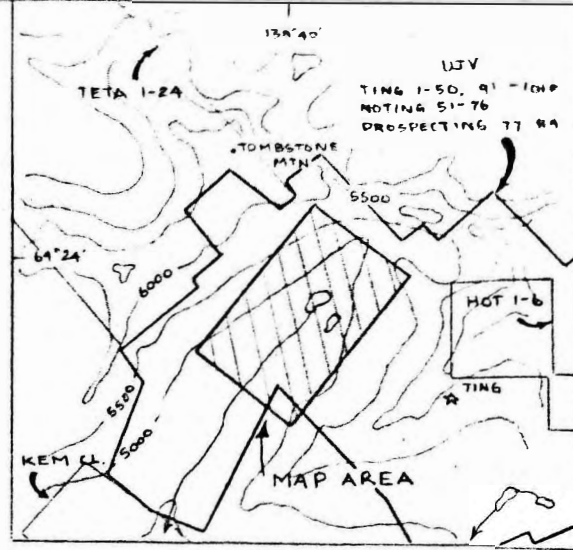
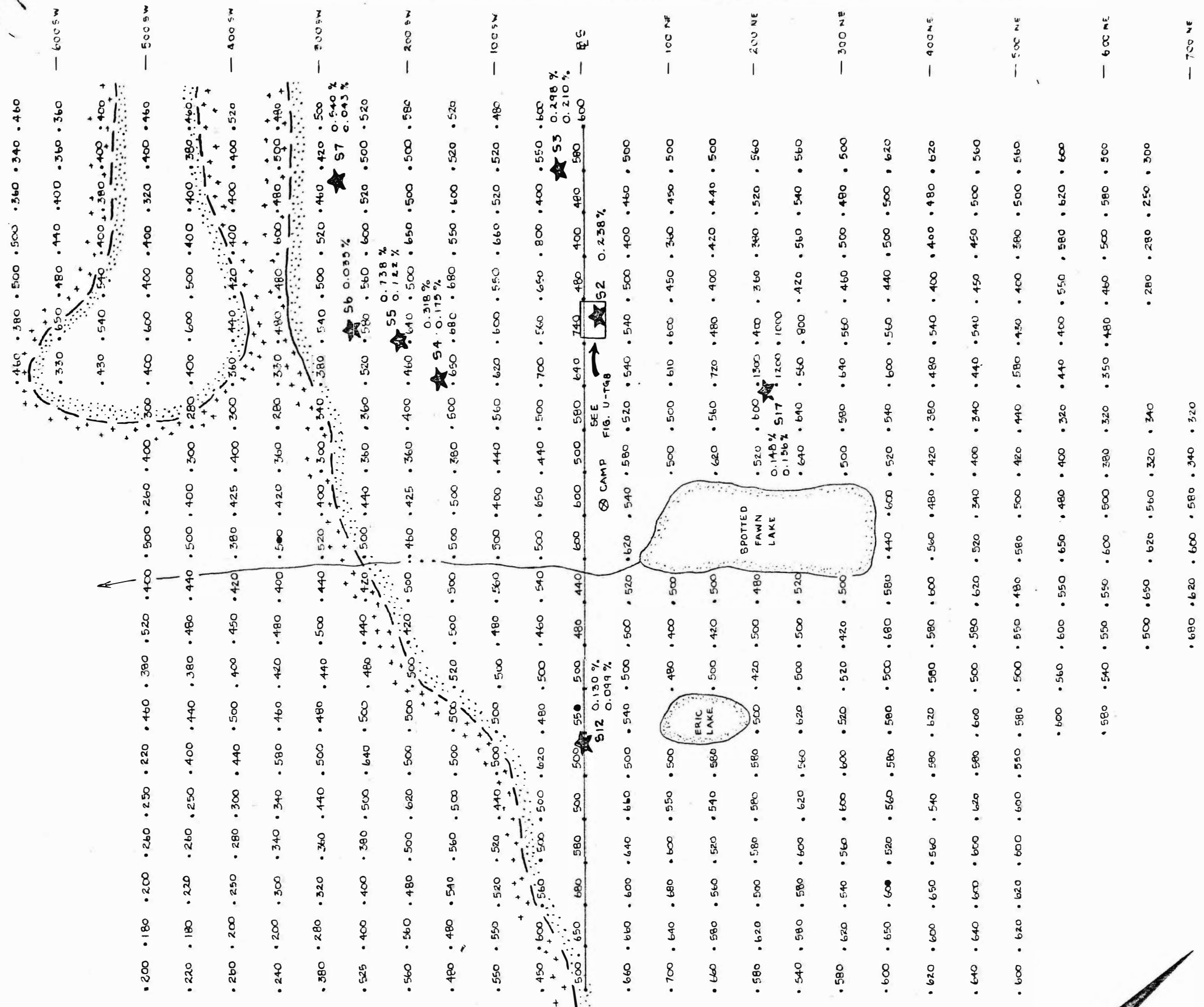
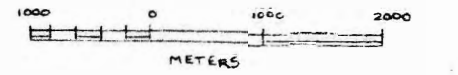


006835



LOCATION MAP

SCALE 1:63,360



LEGEND

- 640 radiometric grid stations and readings in cps with Scintrex BR5-15L (43cc crystal) scintillometer
- ★ S4 0.318 zone and grab sample 0.175 assay in % U₃O₈

GEOLOGY

- ▨ pseudo-leucite tongueite
- + crumbly weathering, porphyritic syenite
- observed geological contact
- - - approximate and inferred geological contacts

FIG. U-TG6

ARCHER, CATHRO AND ASSOCIATES
RADIOMETRIC SURVEY
 SPOTTED FAWN GRID
 TING 1-50, 91-94, 95F-101F
 NOTING 51-76
 PROSPECTING 77-84
 UKON JOINT VENTURE

SCALE 1:5000

