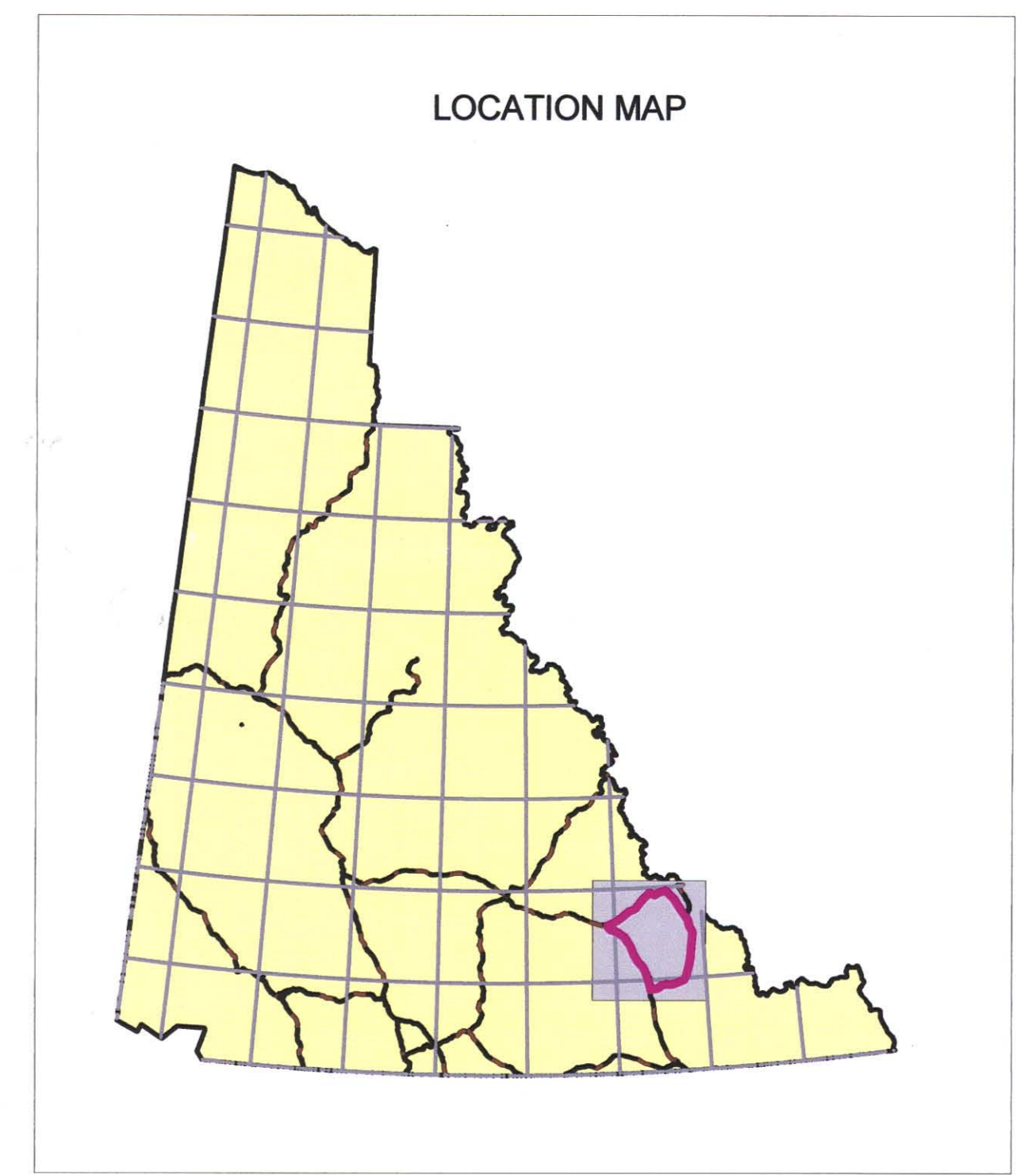
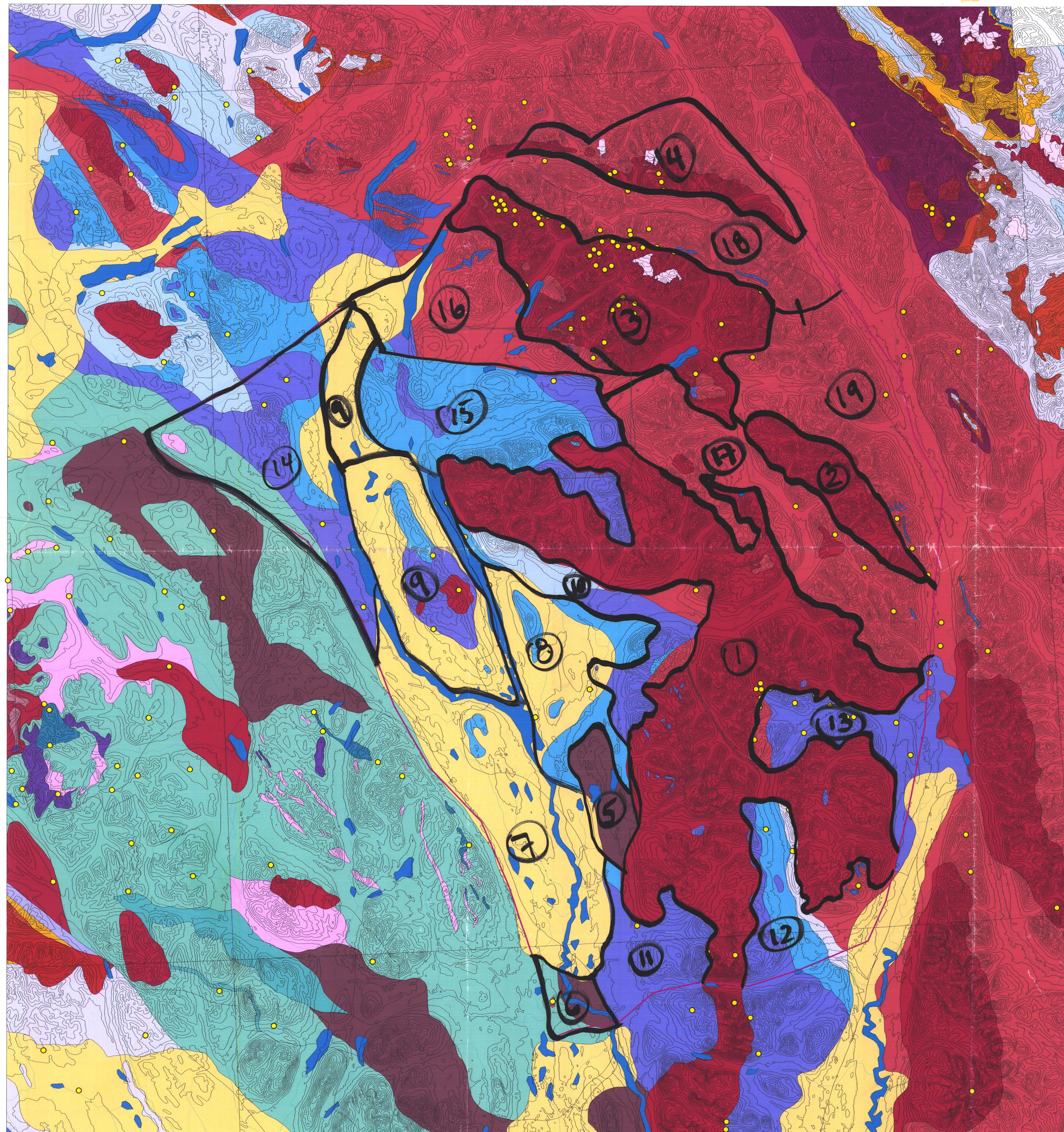


FRANCES LAKE MINERAL ASSESSMENT



LEGEND

- QUATERNARY**
Q QUATERNARY: unconsolidated glacial, glaciofluvial and glaciolacustrine deposits; gluvialite silt, sand, and gravel, and local volcanic ash, in part with cover of soft and organic deposits
- SLIDE MOUNTAIN TERRANE**
OPA1 ANVIL: dominantly oceanic assemblage of mafic volcanics (1), ultramafics (4), chert and pelite (2), limestone (3) and gabbroic rocks (5)
- YUKON-TANANA TERRANE**
PPa2 AMPHIBOLITE: metamorphosed mafic rocks including amphibolite (1) and ultramafic rocks (2) of unknown association; i.e., may belong in part or entirely to Nisling, Nasina and Slide Mountain assemblages and (3), mafic-ultramafic intrusions within Nasina assemblage
- PROTEROZOIC AND PALEOZOIC**
DMgPE PELLY GNEISS SUITE - NORTHEAST: variably deformed granitic rocks of predominantly felsic (q) to intermediate composition (g) northeast of Tintina Fault
DMgPE
- DEVONIAN, MISSISSIPPIAN AND(?) OLDER**
DMN1 NASINA: graphitic quartzite and muscovite quartz-rich schist (1), (3)-(5), and(?) (6) with interspersed marble (2) and probable correlative successions (7) - (9); eclogite occurrences (10)
DMN3
- LATE PROTEROZOIC AND PALEOZOIC**
PPN3 NISLING: assemblage characterized by mica quartz feldspar schist (1) and abundant locally thick limestone members (2); (3) includes possibly equivalent strata northeast of Tintina Fault
PPa

7-0012, 7510
827267, 6715

718662, 6675
274294, 25

NORTH AMERICA

MAGMATIC ROCKS

- MID-CRETACEOUS**
mKB SELWYN SUITE: plutonic suite of intermediate (g) to syenitic (y) compositions
mKC CASSIAR SUITE: medium to coarse grained, equigranular to porphyritic rocks of largely felsic (q) composition; includes minor (?) amounts questionably of more intermediate composition (g)
- MID-CRETACEOUS**
ITR1 SELWYN SUITE: plutonic suite of intermediate (g) to syenitic (y) compositions

MACKENZIE PLATFORM

- LOWER CAMBRIAN**
ICS SEKWI: limestone, locally wavy bedded an nodular; limestone conglomerate slope breccia; massive gray dolostone; medium- to thick-bedded quartz sandstone; purple siltstone; bright orange weathering, fine crystalline dolostone
- UPPER PROTEROZOIC TO LOWER CAMBRIAN**
UPCV VAMPIRE: dark brown weathering, thin-bedded, argillaceous fine-grained sandstone and siltstone, minor interbedded medium- to coarse grained white to light grey orthoquartzite; phyllite, slate, and argillite
CASSIAR PLATFORM
- SILURIAN TO MIDDLE DEVONIAN**
SDM1 MCEVOY: buff, platy siltstone (1) overlain by carbonate and quartzite (2)
- MIDDLE SILURIAN TO MIDDLE DEVONIAN**
SDA1 ASKIN: platy dolomitic siltstone (1) overlain by dolostone and orthoquartzite (2) with rare volcanics (3)
- UPPER CAMBRIAN AND LOWER ORDOVICIAN**
CDS2 ST. CYR: poorly understood, fine clastic and carbonate assemblage, (1) to (5), with only general similarities to equivalent strata elsewhere in Cassiar Mountains; overlain by strata typical of Earn, Tay and Jones Lake assemblages elsewhere
- UPPER CAMBRIAN AND LOWER ORDOVICIAN**
COK1 KECHIKA: basinal fine grained calcareous pelitic strata (1) with locally intercalated mafic volcanics (2)
- LOWER CAMBRIAN**
ICR ROSELLA: resistant, thick bedded to massive, limestone and argillaceous limestone; local archaeocyathid buildups, trilobite fragments, oolites, and pisolites; pisolitic massive dolomite and limestone; marble, calc-silicate, calcareous phyllite and minor schist
- UPPER PROTEROZOIC TO LOWER CAMBRIAN**
PCI1 INGENIKA: consists upwards of coarse quartzose clastics overlain by fine clastics (1), a marble horizon (2), and fine clastic strata (3); laterally equivalent similar fine clastics (4) are mostly (?) correlative to the upper part of this succession
PCI2

EARN BASIN

- DEVONIAN AND MISSISSIPPIAN**
DME EARN: complex assemblage of submarine fan and channel deposits (1), (5) within black siliceous shale and chert (2), (4) and including separated small occurrences of felsic volcanic rocks (3); barite common, and many occurrences of stratiform Pb-Zn
- SELWYN BASIN**
- ORDOVICIAN TO LOWER DEVONIAN**
ODR ROAD RIVER: black shale and chert (1) overlain by orange siltstone (2) or buff platy limestone (3); locally contains beds as old as Middle Cambrian (4)
- UPPER CAMBRIAN AND ORDOVICIAN**
COR1 RABBITKETTLE: basinal limestone (1) that may locally include older and younger basinal pelitic strata undivided (2)
- LOWER CAMBRIAN**
ICG1 GULL LAKE: dominantly fine clastic assemblage (1) with local volcanic units (2)
- UPPER PROTEROZOIC TO LOWER CAMBRIAN**
PCH1 HYLAND: consists upwards of coarse turbiditic clastics (1), limestone (2) and fine clastics typified by maroon and green shale (3); may include younger units (4) includes scattered mafic volcanic rocks (5)
PC12

