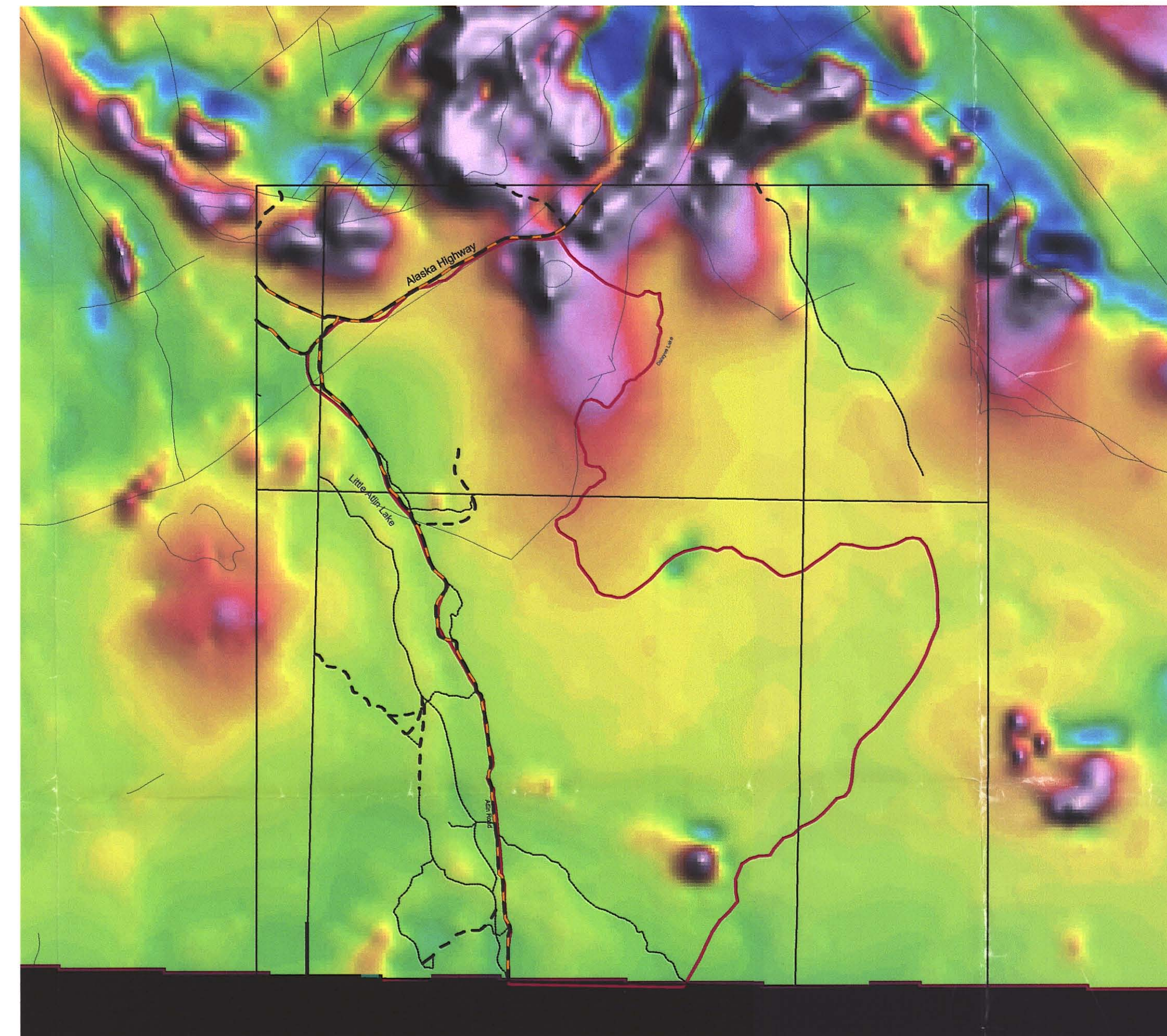
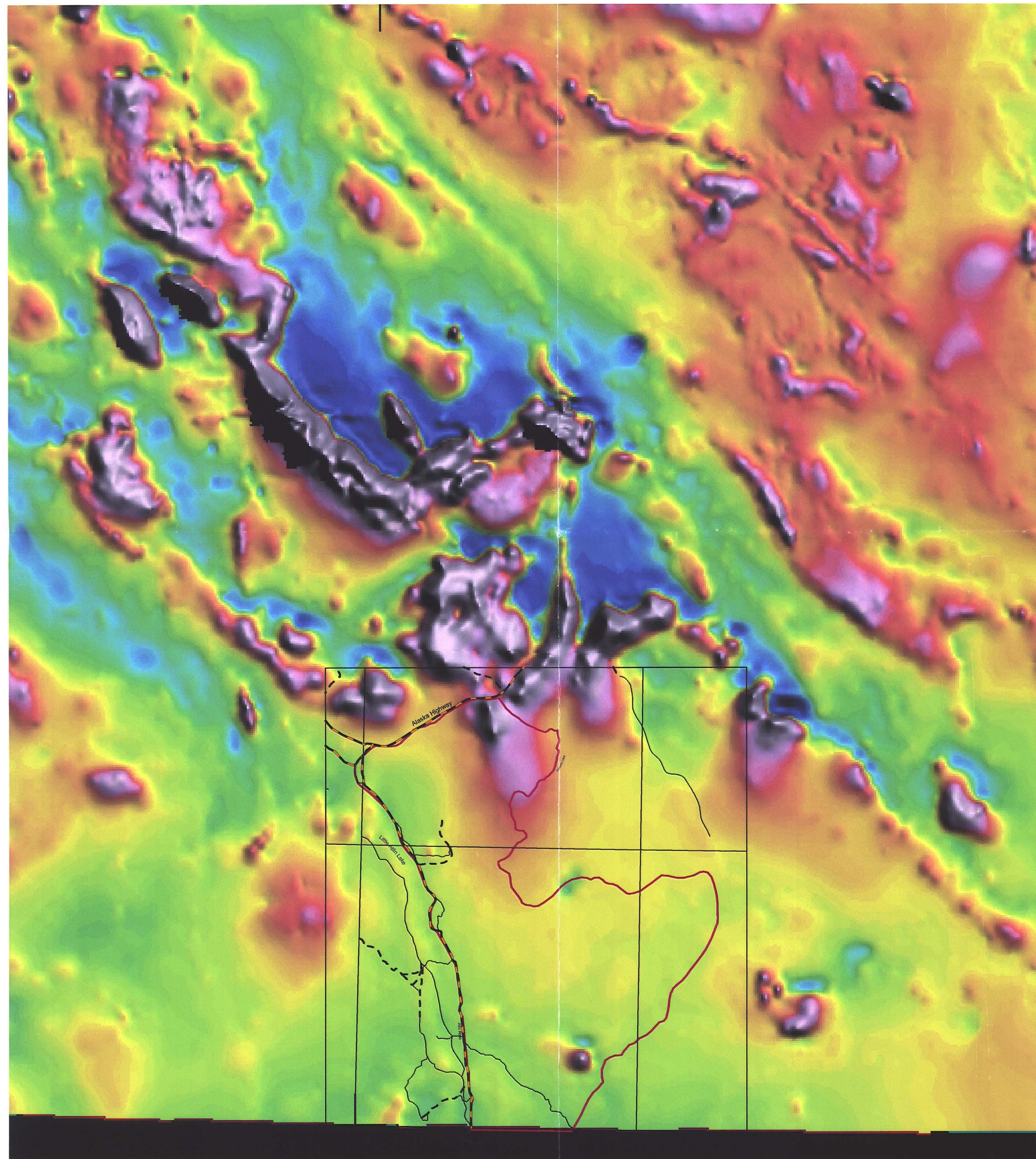
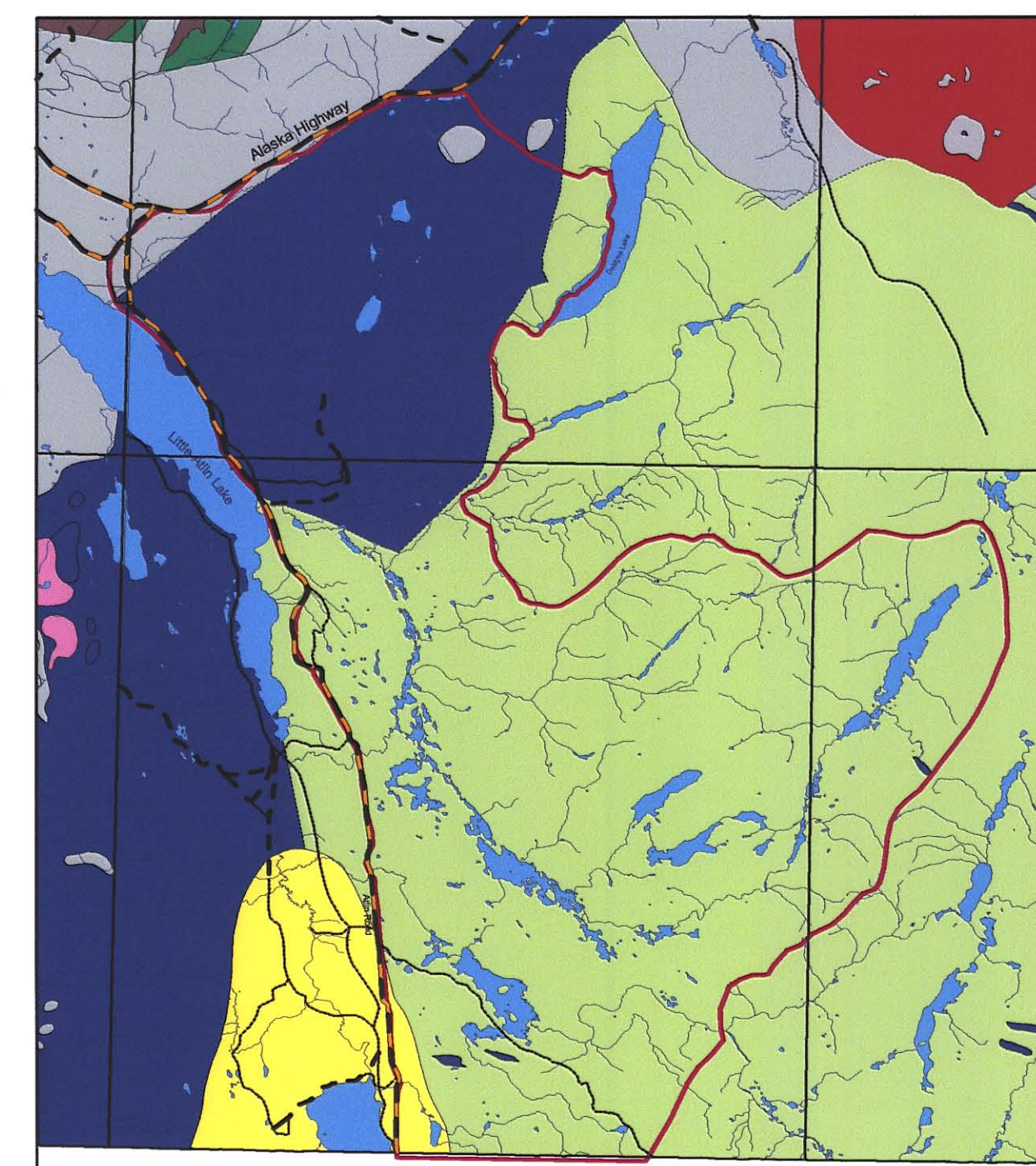


# Regional Aeromagnetics & Proposed Snafu/Tarfu SMA



Confidential



Geological Legend	
<b>MjB</b>	<b>MjB - BRYDE CLITE</b> metre-scale granitic rocks from two plutons, bodies are of predominantly felsic (g) and (h) with minor mafic (m) and (n) and (o) and (p) and (q) and (r) and (s) and (t) and (u) and (v) and (w) and (x) and (y) and (z) and (aa) and (ab) and (ac) and (ad) and (ae) and (af) and (ag) and (ah) and (ai) and (aj) and (ak) and (al) and (am) and (an) and (ao) and (ap) and (aq) and (ar) and (as) and (at) and (au) and (av) and (aw) and (ax) and (ay) and (az) and (ba) and (bb) and (bc) and (bd) and (be) and (bf) and (bg) and (bh) and (bi) and (bj) and (bk) and (bl) and (bm) and (bn) and (bo) and (bp) and (bq) and (br) and (bs) and (bt) and (bu) and (bv) and (bw) and (bx) and (by) and (bz) and (ca) and (cb) and (cc) and (cd) and (ce) and (cf) and (cg) and (ch) and (ci) and (cj) and (ck) and (cl) and (cm) and (cn) and (co) and (cp) and (cq) and (cr) and (cs) and (ct) and (cu) and (cv) and (cw) and (cx) and (cy) and (cz) and (da) and (db) and (dc) and (dd) and (de) and (df) and (dg) and (dh) and (di) and (dj) and (dk) and (dl) and (dm) and (dn) and (do) and (dp) and (dq) and (dr) and (ds) and (dt) and (du) and (dv) and (dw) and (dx) and (dy) and (dz) and (ea) and (eb) and (ec) and (ed) and (ee) and (ef) and (eg) and (eh) and (ei) and (ej) and (ek) and (el) and (em) and (en) and (eo) and (ep) and (eq) and (er) and (es) and (et) and (eu) and (ev) and (ew) and (ex) and (ey) and (ez) and (fa) and (fb) and (fc) and (fd) and (fe) and (ff) and (fg) and (fh) and (fi) and (fj) and (fk) and (fl) and (fm) and (fn) and (fo) and (fp) and (fq) and (fr) and (fs) and (ft) and (fu) and (fv) and (fw) and (fx) and (fy) and (fz) and (ga) and (gb) and (gc) and (gd) and (ge) and (gf) and (gg) and (gh) and (gi) and (gj) and (gk) and (gl) and (gm) and (gn) and (go) and (gp) and (gq) and (gr) and (gs) and (gt) and (gu) and (gv) and (gw) and (gx) and (gy) and (gz) and (ha) and (hb) and (hc) and (hd) and (he) and (hf) and (hg) and (hh) and (hi) and (hj) and (hk) and (hl) and (hm) and (hn) and (ho) and (hp) and (hq) and (hr) and (hs) and (ht) and (hu) and (hv) and (hw) and (hx) and (hy) and (hz) and (ia) and (ib) and (ic) and (id) and (ie) and (if) and (ig) and (ih) and (ii) and (ij) and (ik) and (il) and (im) and (in) and (io) and (ip) and (iq) and (ir) and (is) and (it) and (iu) and (iv) and (iw) and (ix) and (iy) and (iz) and (ja) and (jb) and (jc) and (jd) and (je) and (jf) and (jg) and (jh) and (ji) and (jj) and (jk) and (jl) and (jm) and (jn) and (jo) and (jp) and (jq) and (jr) and (js) and (jt) and (ju) and (jv) and (jw) and (jx) and (jy) and (jz) and (ka) and (kb) and (kc) and (kd) and (ke) and (kf) and (kg) and (kh) and (ki) and (kj) and (kk) and (kl) and (km) and (kn) and (ko) and (kp) and (kq) and (kr) and (ks) and (kt) and (ku) and (kv) and (kw) and (kx) and (ky) and (kz) and (la) and (lb) and (lc) and (ld) and (le) and (lf) and (lg) and (lh) and (li) and (lj) and (lk) and (ll) and (lm) and (ln) and (lo) and (lp) and (lq) and (lr) and (ls) and (lt) and (lu) and (lv) and (lw) and (lx) and (ly) and (lz) and (ma) and (mb) and (mc) and (md) and (me) and (mf) and (mg) and (mh) and (mi) and (mj) and (mk) and (ml) and (mm) and (mn) and (mo) and (mp) and (mq) and (mr) and (ms) and (mt) and (mu) and (mv) and (mw) and (mx) and (my) and (mz) and (na) and (nb) and (nc) and (nd) and (ne) and (nf) and (ng) and (nh) and (ni) and (nj) and (nk) and (nl) and (nm) and (nn) and (no) and (np) and (nq) and (nr) and (ns) and (nt) and (nu) and (nv) and (nw) and (nx) and (ny) and (nz) and (oa) and (ob) and (oc) and (od) and (oe) and (of) and (og) and (oh) and (oi) and (oj) and (ok) and (ol) and (om) and (on) and (oo) and (op) and (oq) and (or) and (os) and (ot) and (ou) and (ov) and (ow) and (ox) and (oy) and (oz) and (pa) and (pb) and (pc) and (pd) and (pe) and (pf) and (pg) and (ph) and (pi) and (pj) and (pk) and (pl) and (pm) and (pn) and (po) and (pp) and (pq) and (pr) and (ps) and (pt) and (pu) and (pv) and (pw) and (px) and (py) and (pz) and (qa) and (qb) and (qc) and (qd) and (qe) and (qf) and (qg) and (qh) and (qi) and (qj) and (qk) and (ql) and (qm) and (qn) and (qo) and (qp) and (qq) and (qr) and (qs) and (qt) and (qu) and (qv) and (qw) and (qx) and (qy) and (qz) and (ra) and (rb) and (rc) and (rd) and (re) and (rf) and (rg) and (rh) and (ri) and (rj) and (rk) and (rl) and (rm) and (rn) and (ro) and (rp) and (rq) and (rr) and (rs) and (rt) and (ru) and (rv) and (rw) and (rx) and (ry) and (rz) and (sa) and (sb) and (sc) and (sd) and (se) and (sf) and (sg) and (sh) and (si) and (sj) and (sk) and (sl) and (sm) and (sn) and (so) and (sp) and (sq) and (sr) and (ss) and (st) and (su) and (sv) and (sw) and (sx) and (sy) and (sz) and (ta) and (tb) and (tc) and (td) and (te) and (tf) and (tg) and (th) and (ti) and (tj) and (tk) and (tl) and (tm) and (tn) and (to) and (tp) and (tq) and (tr) and (ts) and (tt) and (tu) and (tv) and (tw) and (tx) and (ty) and (tz) and (ua) and (ub) and (uc) and (ud) and (ue) and (uf) and (ug) and (uh) and (ui) and (uj) and (uk) and (ul) and (um) and (un) and (uo) and (up) and (uq) and (ur) and (us) and (ut) and (uu) and (uv) and (uw) and (ux) and (uy) and (uz) and (va) and (vb) and (vc) and (vd) and (ve) and (vf) and (vg) and (vh) and (vi) and (vj) and (vk) and (vl) and (vm) and (vn) and (vo) and (vp) and (vq) and (vr) and (vs) and (vt) and (vu) and (vv) and (vw) and (vx) and (vy) and (vz) and (wa) and (wb) and (wc) and (wd) and (we) and (wf) and (wg) and (wh) and (wi) and (wj) and (wk) and (wl) and (wm) and (wn) and (wo) and (wp) and (wq) and (wr) and (ws) and (wt) and (wu) and (wv) and (ww) and (wx) and (wy) and (wz) and (xa) and (xb) and (xc) and (xd) and (xe) and (xf) and (xg) and (xh) and (xi) and (xj) and (xk) and (xl) and (xm) and (xn) and (xo) and (xp) and (xq) and (xr) and (xs) and (xt) and (xu) and (xv) and (xw) and (xx) and (xy) and (xz) and (ya) and (yb) and (yc) and (yd) and (ye) and (yf) and (yg) and (yh) and (yi) and (yj) and (yk) and (yl) and (ym) and (yn) and (yo) and (yp) and (yq) and (yr) and (ys) and (yt) and (yu) and (yv) and (yw) and (yx) and (yy) and (yz) and (za) and (zb) and (zc) and (zd) and (ze) and (zf) and (zg) and (zh) and (zi) and (zj) and (zk) and (zl) and (zm) and (zn) and (zo) and (zp) and (zq) and (zr) and (zs) and (zt) and (zu) and (zv) and (zw) and (zx) and (zy) and (zz)
<b>mTLUC</b>	<b>mTLUC - CACHE CREEK</b> well bedded ribbon chert interbedded with shale, siltstone and greywacke
<b>CTC1</b>	<b>CTC1 - CACHE CREEK</b> massive, unmetamorphosed ultrabasic rocks (1), metabasites (2), carbonates (3) and ribbon chert (4)
<b>CTC2</b>	<b>CTC2 - CACHE CREEK</b> 1. dark mafic to dark brown, weathering, strongly magnetic, variably bedded, unmetamorphosed and chloritized ultrabasic rocks including nodules to coarse grained hornblende-gneiss, diorite, gabbro, peridotite, dunite, serpentinite, and pyroxenite (Cache Creek Op.) 2. amphibole and biotite, epidote, garnet, quartz, locally plagioclase, apatite, ilmenite (2) gneissites with clasts of hornblende and diorite, clinopyroxene rocks with various assemblages, locally massive, fine-grained metabasite and hornblende diorite (Cache Creek Op. - mafic)
<b>CTC3</b>	<b>CTC3 - CACHE CREEK</b> 3. massive, finely crystalline, locally chloritized and fusible grey hornblende, biotite, hornblende, clinopyroxene, quartz, locally biotite, medium-grained, recrystallized white to pink yellow hornblende and chlorite biotite hornblende, iron silicates (Cache Creek Op. - mafic)

006925

