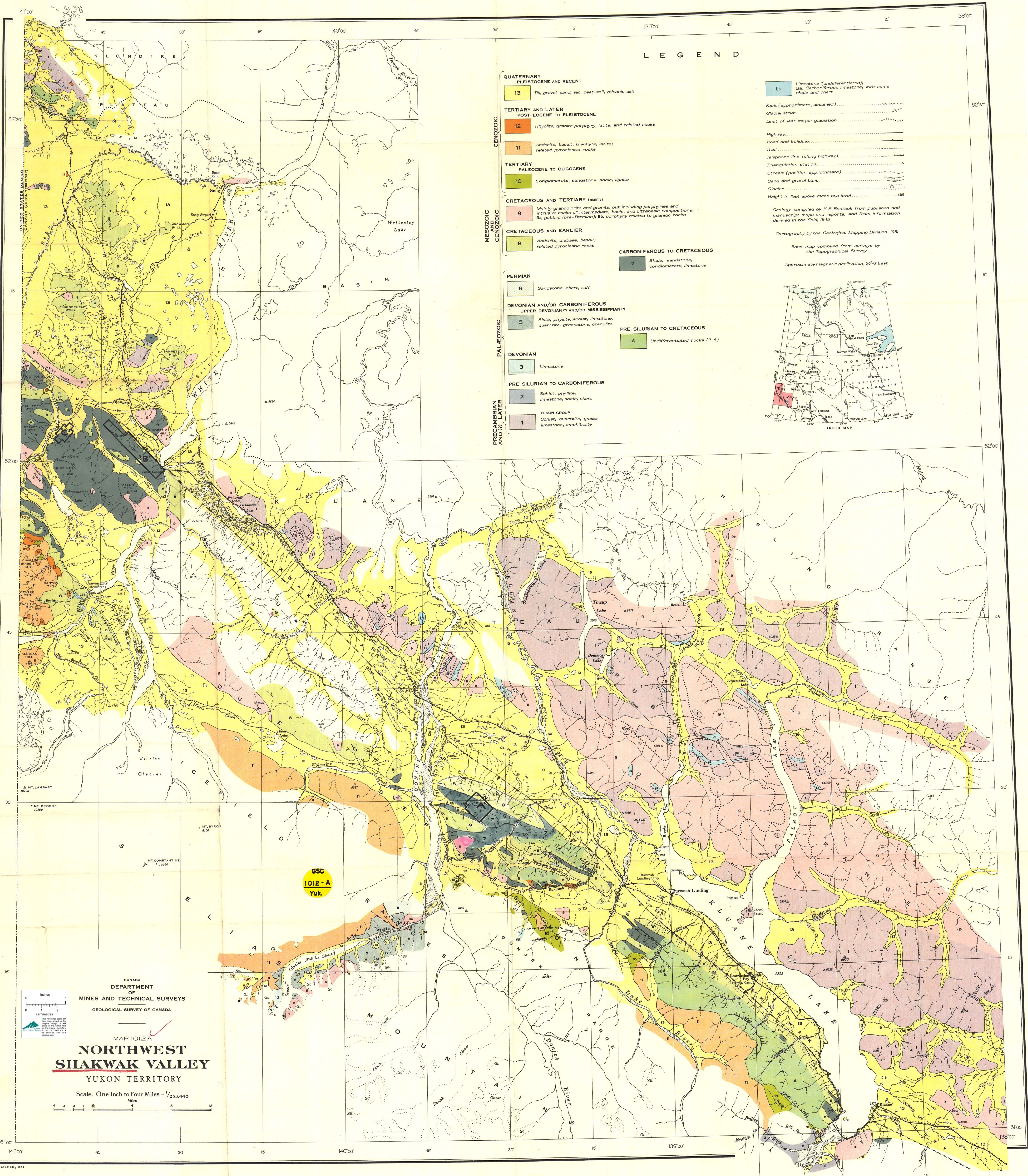


ITE HORSE 1007 B



LEGEND

- QUATERNARY**  
PLEISTOCENE AND RECENT  
13 Till, gravel, sand, silt, peat, soil, volcanic ash
- TERTIARY AND LATER**  
POST-EOCENE TO PLEISTOCENE  
12 Rhyolite, granite porphyry, latite, and related rocks
- 11 Andesite, basalt, trachyte, latite, related pyroclastic rocks
- TERTIARY**  
PALEOCENE TO OLILOCENE  
10 Conglomerate, sandstone, shale, lignite
- CRETACEOUS AND TERTIARY (mainly)**  
9 Mainly granodiorite and granite, but including porphyries and intrusive rocks of intermediate, basic, and ultrabasic compositions; 9a, gabbro (pre-Permian); 9b, porphyry related to granitic rocks
- CRETACEOUS AND EARLIER**  
8 Andesite, diabase, basalt, related pyroclastic rocks
- CARBONIFEROUS TO CRETACEOUS**  
7 Shale, sandstone, conglomerate, limestone
- PERMIAN**  
6 Sandstone, chert, tuff
- DEVONIAN AND/OR CARBONIFEROUS**  
UPPER DEVONIAN AND/OR MISSISSIPPIAN  
5 Slate, phyllite, schist, limestone, quartzite, greenstone, granulite
- PRE-SILURIAN TO CRETACEOUS**  
4 Undifferentiated rocks (2-8)
- DEVONIAN**  
3 Limestone
- PRE-SILURIAN TO CARBONIFEROUS**  
2 Schist, phyllite, limestone, shaly, chert
- PRECAMBRIAN AND (?) LATER**  
1 YUKON GROUP  
Schist, quartzite, gneiss, limestone, amphibolite

- Ls Limestone (undifferentiated); Lsa, Carboniferous limestone, with some shale and chert
- Fault (approximate, assumed)
- Glacial striae
- Limit of last major glaciation
- Highway
- Road and building
- Trail
- Telephone line (along highway)
- Triangulation station
- Stream (position approximate)
- Sand and gravel bars
- Glacier
- Height in feet above mean sea-level

Geology compiled by H.S. Bostock from published and manuscript maps and reports, and from information derived in the field, 1945

Cartography by the Geological Mapping Division, 1951

Base-map compiled from surveys by the Topographical Survey

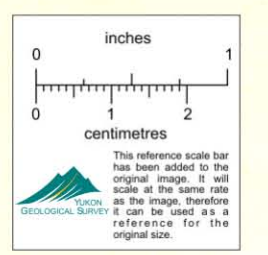
Approximate magnetic declination, 30° East



CANADA  
DEPARTMENT OF  
MINES AND TECHNICAL SURVEYS  
GEOLOGICAL SURVEY OF CANADA

MAP 1012A  
**NORTHWEST SHAKWAK VALLEY**  
YUKON TERRITORY

Scale: One Inch to Four Miles = 1/253,440 Miles



115

007000

115

PUBLISHED 1955