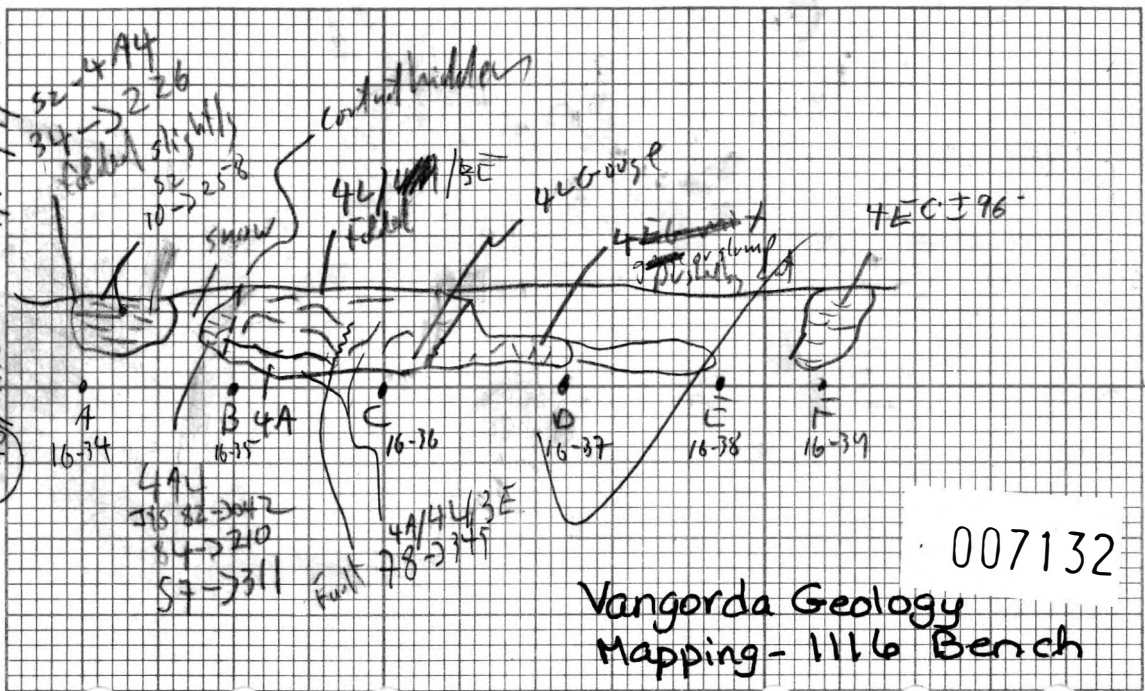


9/12/91

116/110

46 LM

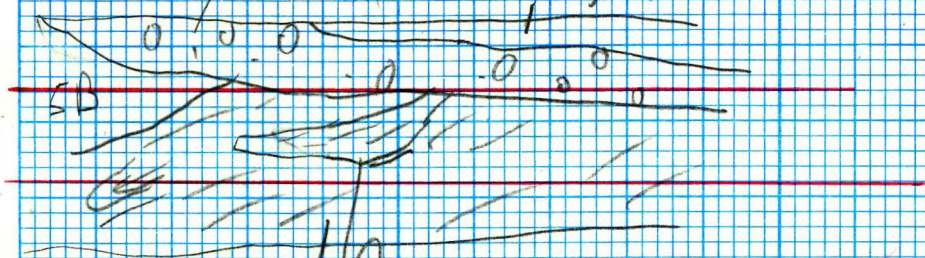


007132

Vangorda Geology  
Mapping - 116 Bench

10A vachellii

clay db



SB

E  
10-36

F  
26<sup>52</sup> → 313  
10-37

G  
10-38

4L

Armed joint 88 → 228

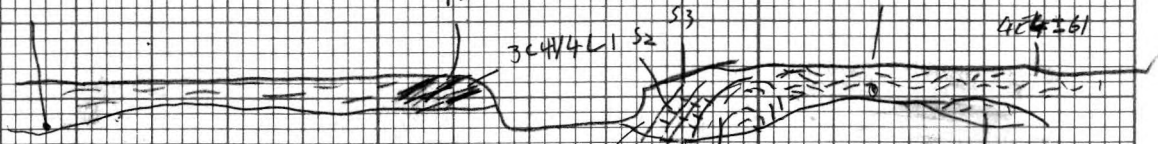
29/01/92

2072

4E16  
S2-11-2175

4E11  
S2 34-2178  
4E11±8

L3  
F3-09-2291  
4E4  
S2-15-2229



16-08

16-09

10

11

12

13

14

3C41/4L1 S2

S3

4E16  
4E11±61

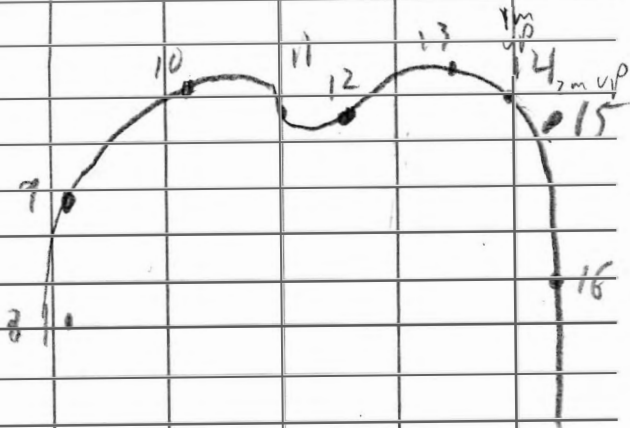
3C164/4L1

4E±4±1

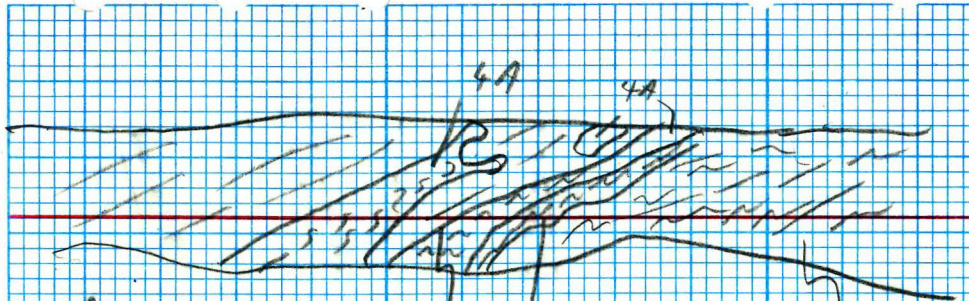
~~3C164/4L1~~  
Goussé

22/08/91

16-	08-09	- 16m
	09-10	- 12m
	10-11	- 9m
	11-12	- 9m
	12-13	- 11m
	13-14	- 13m
	14-15	- 8m
	15-16	16m



14/10/92



J  
~~1135~~  
 16-46

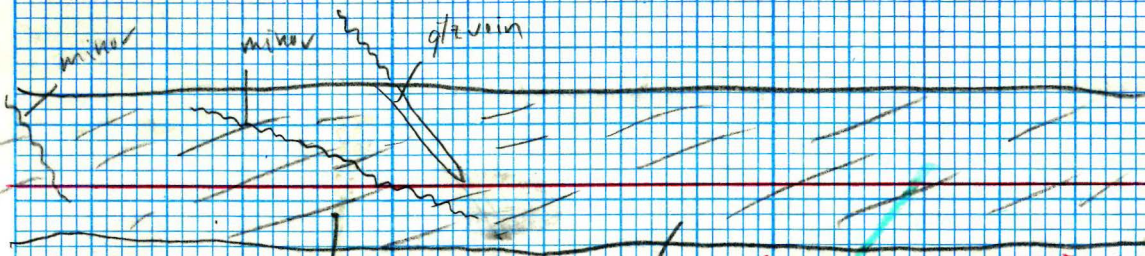
K  
 1136  
 16-47

L  
 1137  
~~16-48~~  
 52  
 52 → 248

M  
 1138  
 4L(30) 16-49

N  
 1139  
~~16-50~~  
 5G9  
 (5B?)

14/01/92



F  
22-72

G 16-45  
22-73

↘ 235 → 350

H 16-42

I 16-44 45

↘ 35 → 275

J 16-45 46

4L + chd, Po sph. Py

SZ-14 → 050  
47 → 085

SZ-18 → 308

4EC

4EC9 Fault Group - matches to 1122  
58 → 300

Rubble

Rubble

16-17

16-18

19

20

21

22

4EC9  
44

4.  
30/40/360

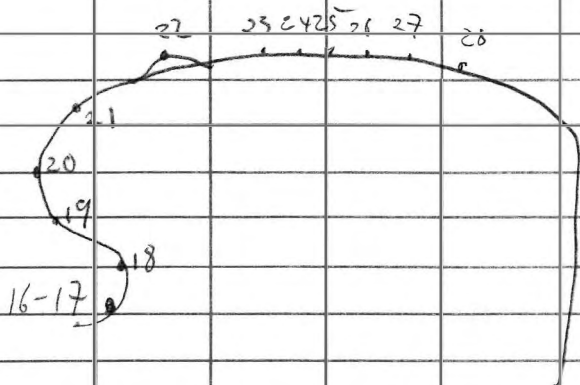
4EC  
4L

Ass  
fault

4L  
fault zone  
40 → 348  
matches to 1122

05/09/91

16-	17-	18-	14m
18-	19-		13m
19-	20-		12m
20-	21-		16m
21-	22-		13m
22-	23-		14m
23-	24-		13m
24-	25-		11m
25-	26-		12m
26-	27-		10m
27-	28-		12m



(4C5 compact  
on 1122)  
Follows to 1122 bench  
Four 443 → 330  
4500 use

46  
52-22 → 196

4C3

16-01

16-02

16-03

16-04

05

06

07

4C3

52 23 → 253

4EG

4504

(mcs)



21/08/91

16-01-02 - 18m

02-03 - 11m

03-04 - 12m

04-05 - 13m

05-06 - 11m

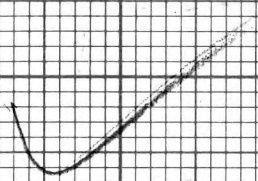
06-07 - 13m

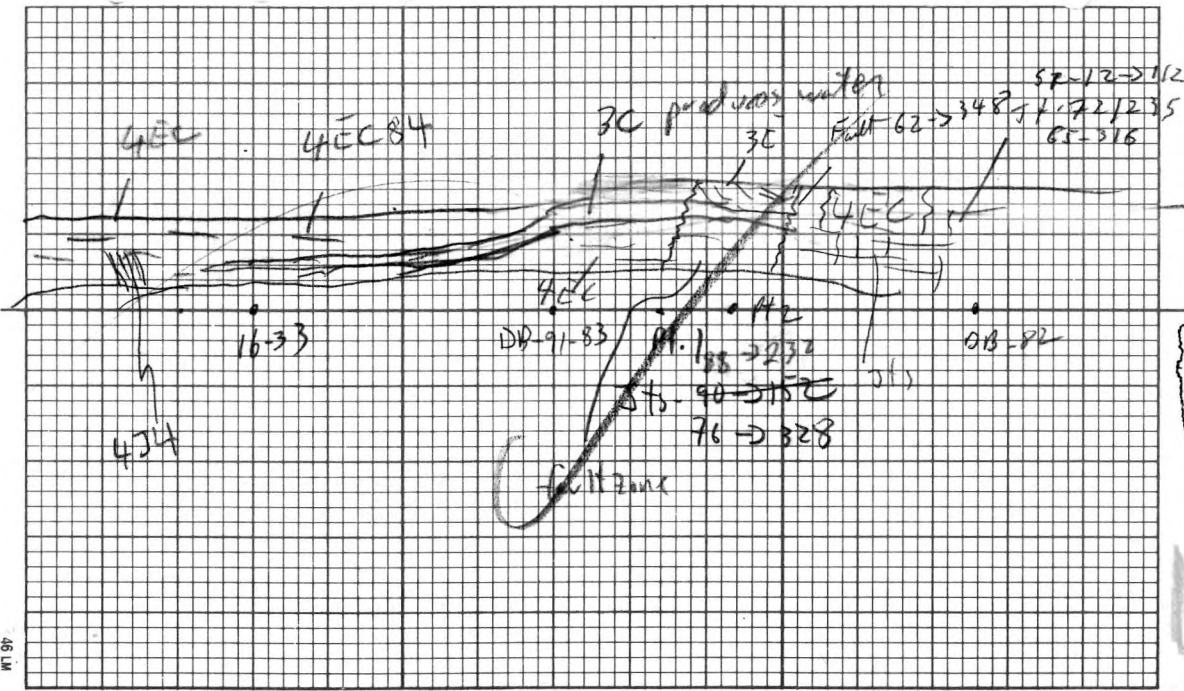
~~07-08~~

~~08-09~~

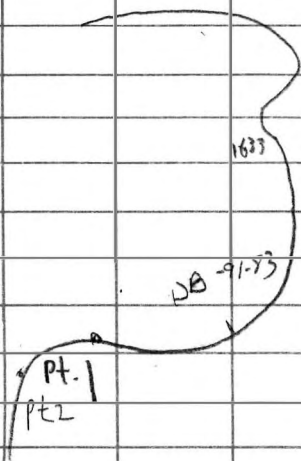
Rabbit 4E1

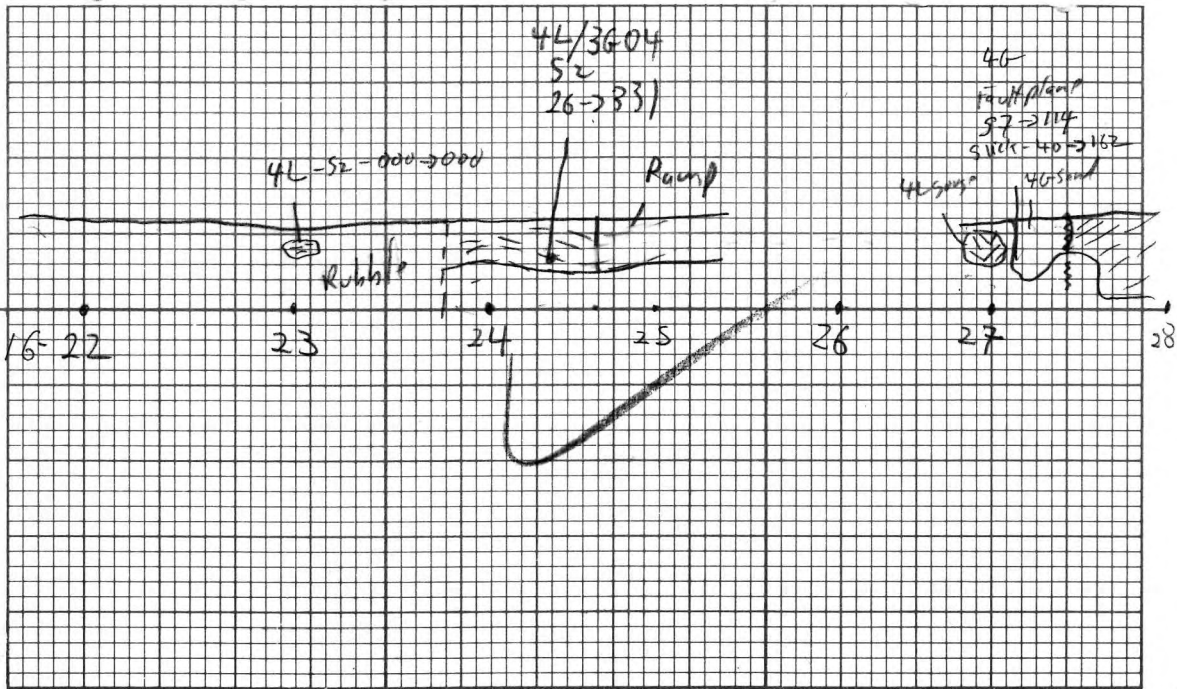
16-14      15      16





25/09/91





4L/3604  
52  
26-233

4L-52-000-000

Rump

Rubbe

4G

Fäuttlamp

97-2114

51111-40-2162

4L Spira

4G Spira

16-22

23

24

25

26

27

28

05/09/91

Part of Crossfall  
Gully 2005

R" SA-28 → 281  
JTS SZ → 130  
4/6 w Sun 11

