



1122

shnd 6

27/06/91

22-24 - 25 - 18m

22-25 - 26 - 12m

22-26 - 27 - 9m

27-28 - 10m

28-29 - 9m

29-30 - 10m

30-31 - 8m

31-32 - 18m

5240-5243

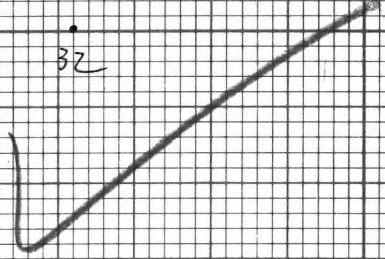
4E119



30

31

32

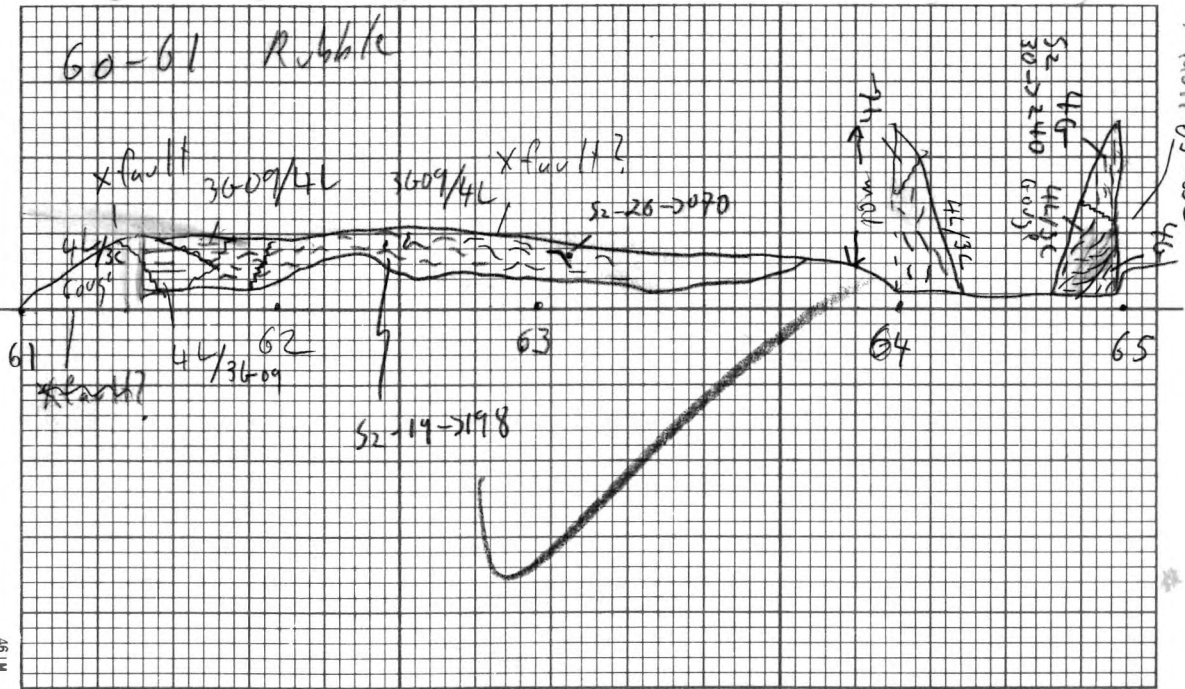


1122

27/06/91

1122

60-61 Rubble



1122

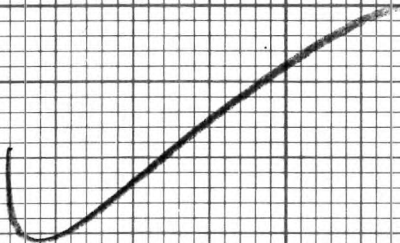
46 R''

46

22-65

22-66

slicht  
34 → 059



63848  
63847  
46  
40  
41  
42  
39  
45  
43  
44  
38

1122

4E1 ± 9  
30 → 090

Ruhle

Ramp

37

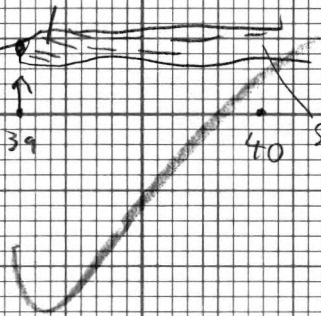
46

38

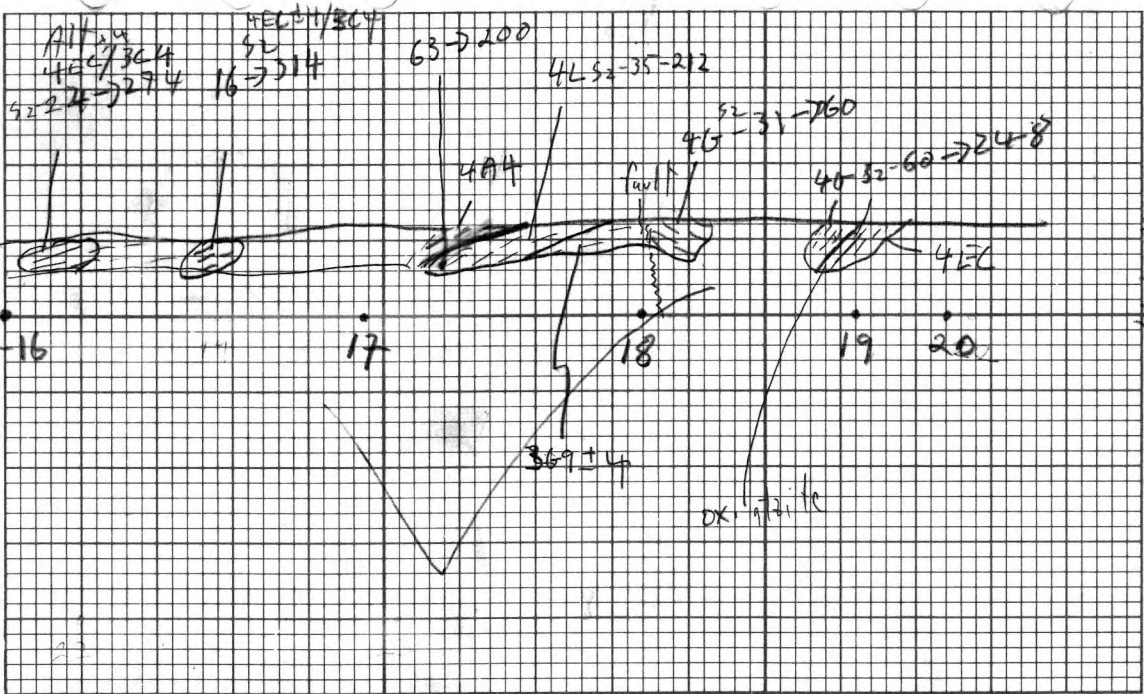
39

40

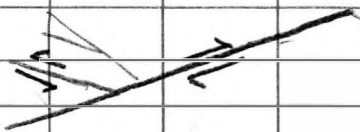
Sz-08 → 270

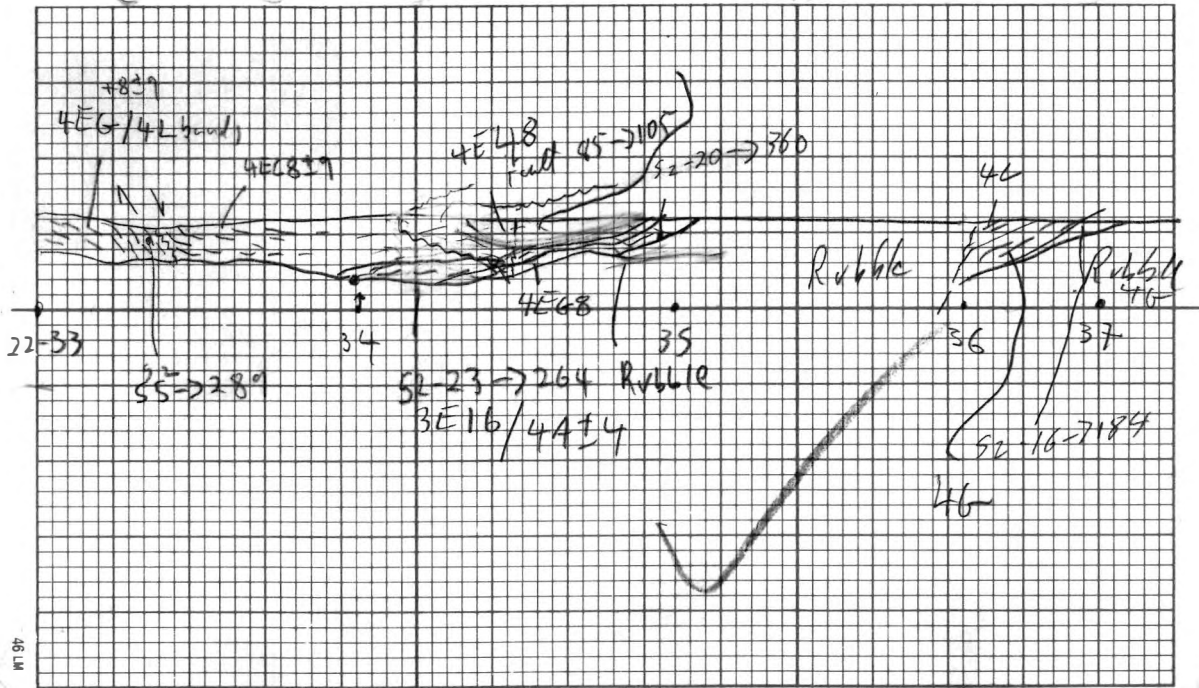


05/07/91



24/06/91





+839  
4EG/4L hand

4EG839

4E48 fault 45-1105  
52-20-360

46

22-33

52-25-289

34

52-23-264 Rubble

4EG8

35

3E16/4A±4

Rubble

36

37

Rubble 46

46

52-16-7184

03/07/91

1122

Section 16

22-33-34 - 21m

34-35 - 21m

35-36 - 10m

36-37 - 9m

37-38 - 15m

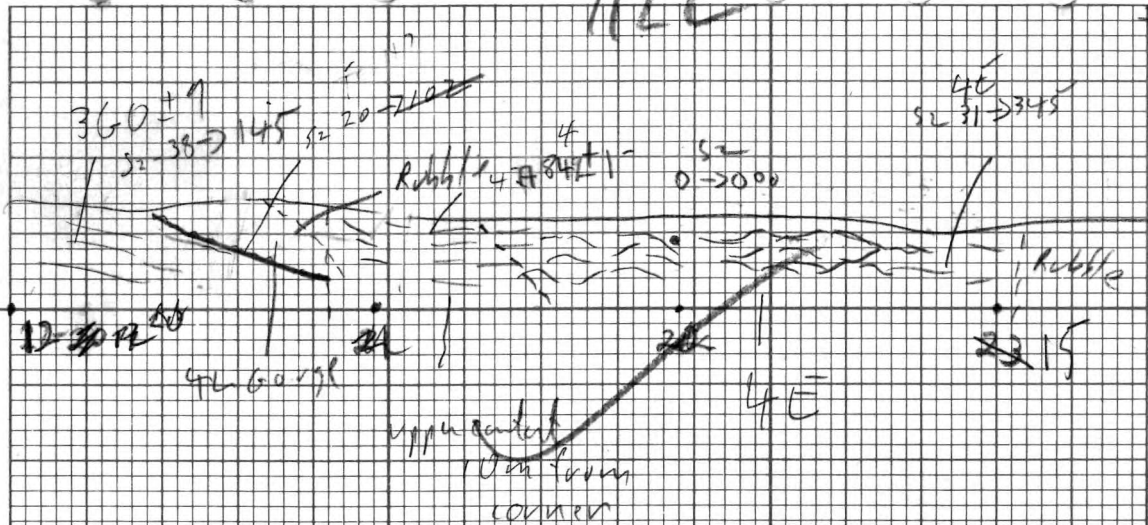
38-39 - ~22 Ramp

39-40 - 16m

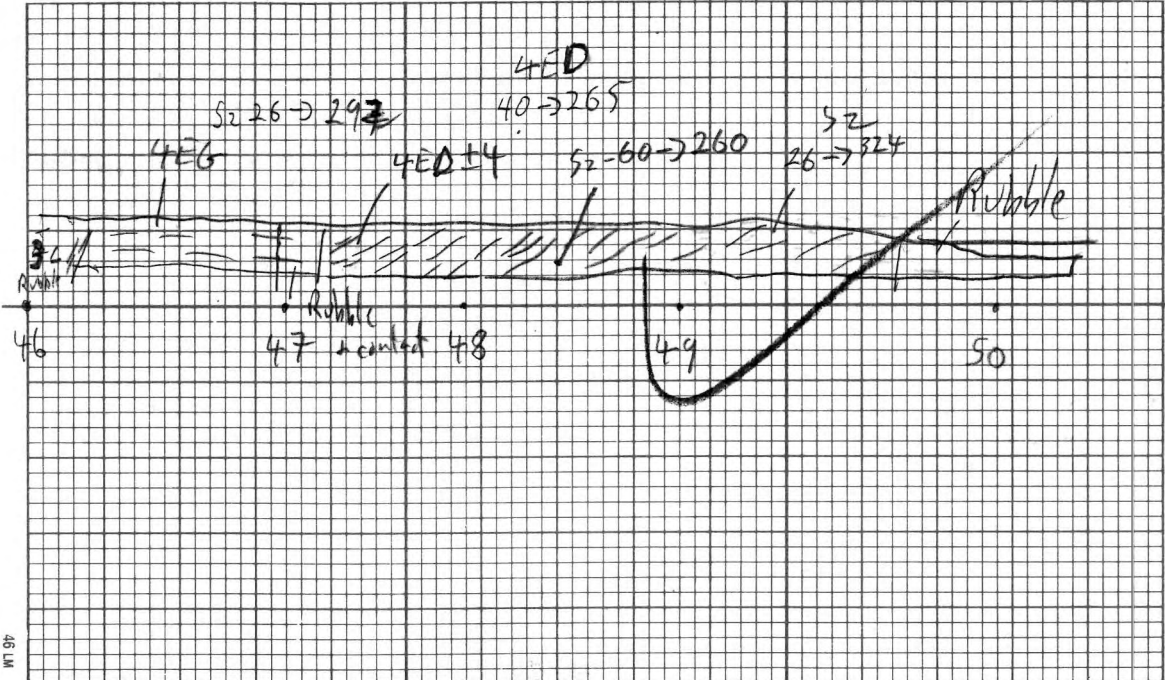
1122

Map 2306/91

24106/91



Str. Numbers wrong - Not accurate scale.



10/07/91

5m N 41 2m OT

42 4m W T

middle H.G.

27-41

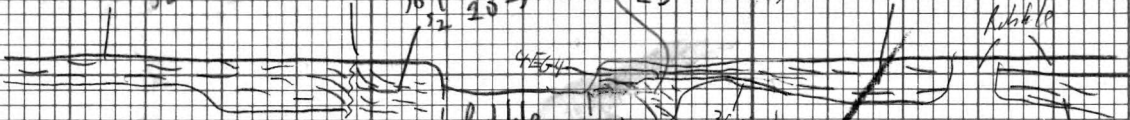
364 ± sph/gn  
S2 22 → 126

Fault 79 → 078

364  
S2 20 → 022

WL folded  
S2 - 40 → 181  
L3 - 31 → 145

4E64/4L bands  
S2 11 → 281



Rubble

36 pinches

3609

Rubble

budge

42

43

44

45

46

364  
79 → 256

10/09/88

22. - 41-42 -15m

42-43 -14 bulge

43-44 -13m

44-45 -14m

45-46 -12m

46-47 -17m

47-48 -12m

48-49 -14m

49-50 -21m

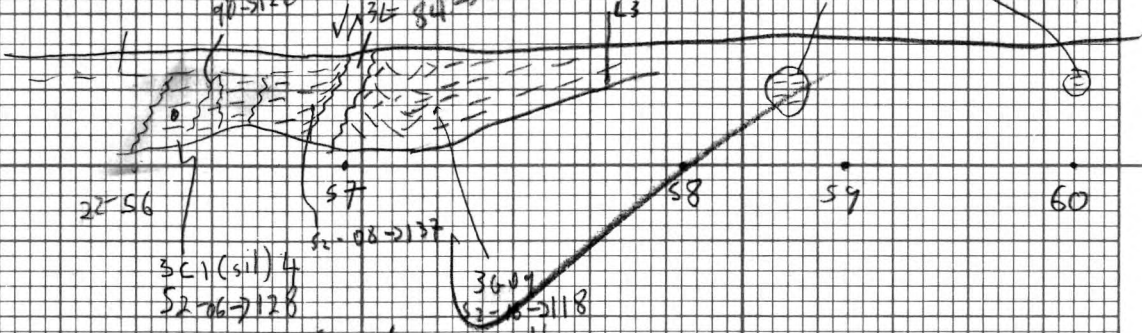
~~50-51~~

Lithons  
Main siliceous fault  
90-1122

major fault  
VA 36 84 → 305

Lithons  
S2-18 → 102  
L3

4L/3609



22-56

57

58

59

60

3C1 (sil) 4  
S2-06 → 128

S2-08 → 137

3609  
S2-05 → 118

pass. v. ang. formation  
Lithons

8/8/91

22-56-57-14m

57-58-22m

58-59-11m

59-60-15m

60-61-13m

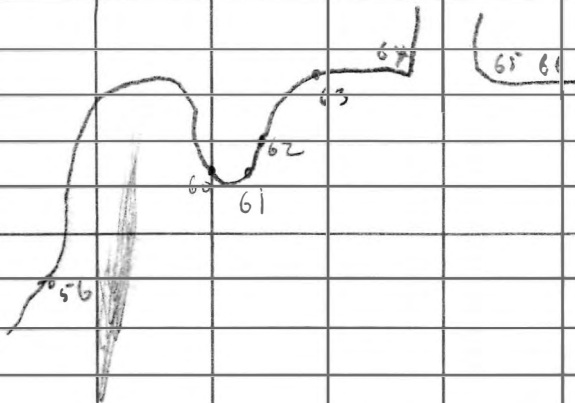
61-62-17m

62-63-17m

63-64-21m

64-65-15m

65-66-15m



44/4E6  
Breccia  
guss

Shearing  
90 → 305

46-5225 → 333

4EG9+4 (input)  
can be seen to NNE  
on 1128



51  
52  
53  
54  
55

F/60V

4A4  
52 45 → 018

11/07/91

Took 91-PL-U/G-01  
for float test.

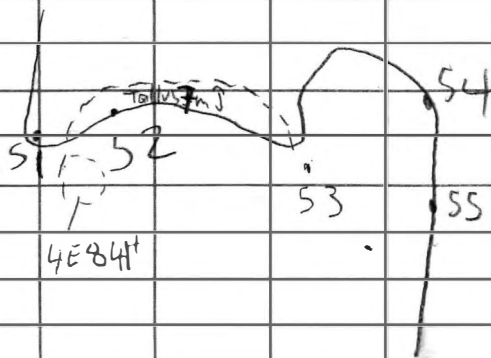
12/07/91

Took 91-PL-M-01  
old "M"

---

15/07/91

22-51-52	- 11m
52-53	- 18m
53-54	- 10m
54-55	- 9m



#4

3609 ± 15 Rh 5/4/6m

3609 ± 1 Rh, when #4

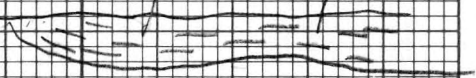
32-30+335

5L31-5015

52 05 → 102

12. ● → 22°

Cat 3609 Rubble



121

122

123

124

125

22-04

22-05

22-06

22-07

22-08

46 LM

19/06/91

Fault 68-235°

S2 24-228

46  
21-202

3C A+Hb  
60m<sup>2</sup>

46

Rubble

AZF

Rubble

4L

125  
22-08

126  
22-09

127  
22-10

128  
22-11

Follow  
site  
map for 15/06/91

19/06/91



14/01/92

N. end by old creek when stand

8+10 were digging (E) 1118 + 1122 (W)

A-B - 13m

B-C - 11m

G-D - 11m

D-E - 12m

E-F - 14m

F-G - 11m

G-H - 16m

H-I - 12m

I-J - 18m

J-K - 11m

K-L - 10m

L-M - 13m

M-N - 11m

small  
fuel gauge

S2-61 → 2326  
4EG

4L  
S2-21 → 2310

S2-19 → 2219

4A  
S2  
34 → 2193

118  
22-01  
Sun  
←

4A/3E1  
S2 41 → 2214

4L  
4L gauge  
S2 50 → 2330  
22-02

R. White

3E16

120  
22-03

121  
22-04

S2 40 → 2236  
L 2 = 23 → 2293

22-01

19/06/91

91-PL-118-119 - 20m

22-02 119-120 - 20m

03 120-121 - 20m

04 121-122 - 30m

05 122-123 - 19m

06 123-124 - 9m

07 124-125 - 11m

08 125-126 - 19m

09 126-127 - 15m

22-10 127-128 - 17m

22-11