



# Telecommunications

007327 Pell-R.

DY004 23 = FD DAWSON CITY YUKON 18 1.55P YST=  
1966 MAR 18 PM 3 12

W SIROLA=

EDGEWATER HOTEL WHITEHORSE=

*Surrender! closed since 77 mile long low anomaly location 5.0m 18 570 mile east in schist require 5.0m 48*  
BG GC TM OP LC FO MF CG FI SJ ML OP OG DN CJ MM CH TH

*5.5m*  
TM LG MN TG MH=

*Claim*  
CLYDE SMITH=

*736-5238  
Kenda Krupp*

*one mile long low anomaly located  
18 miles east in schist. Require 48  
claims. Will state to-morrow (Mac)*

TM LG MN TG MH  
BG GC TM OP LC FO MF CG FI SJ ML OP OG DN CJ MM CH TH

KERR ADDISON MINES LIMITED  
405 - 1112 WEST PENDER STREET  
VANCOUVER 1, B.C.

COPY

April 5, 1966

Mr. Ken Thompson,  
P.O. Box 294,  
Whitehorse, Y. T.

Dear Ken:

Herewith, the required sketches for the "MAC" 21-24  
M.C.'s.

We realize the recording process has been something  
of a headache for you and we very much appreciate your co-operation  
in this regard.

Yours sincerely,

Wm. M. Sirola.

WMS/lk

P.S. Would you please mail two copies of each of the  
following claim maps:-

105 M 4  
105 L 13

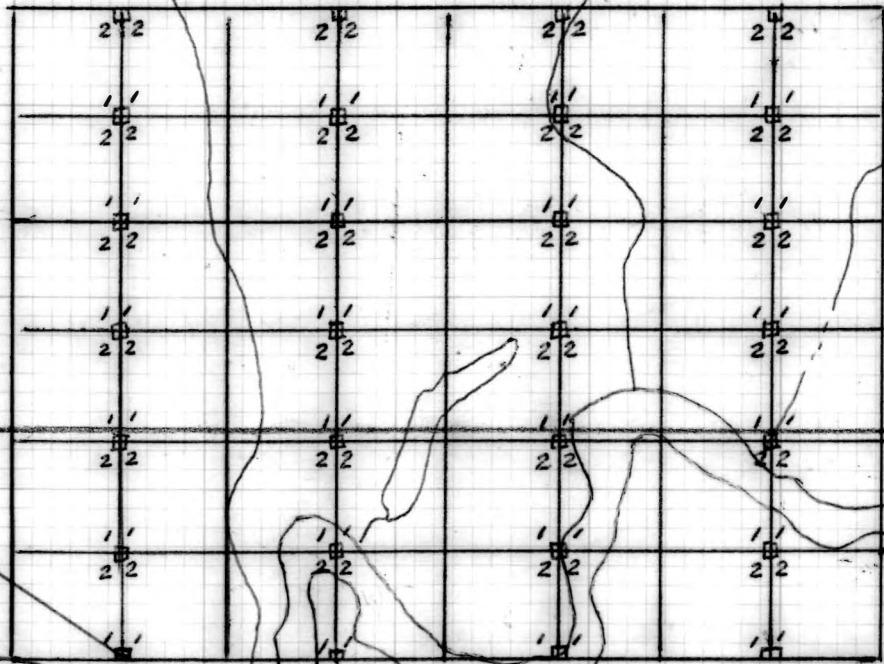
/lk

PLAN SHOWING LOCATION OF MAC NOS. INCLUSIVE MINERAL  
 CLAIMS IN THE MAYO-WHITEHORSE YUKON TERRITORY  
 MINING DIVISION

MAC  
GROUP



SCALE: 2 INCHES = 1 MILE



KALZAS MTN.  
 25 miles N 55W

LONE MTN.  
 4-8 miles due east

MACMILLAN RIVER

62° 54'

135° 00'

135° 00'