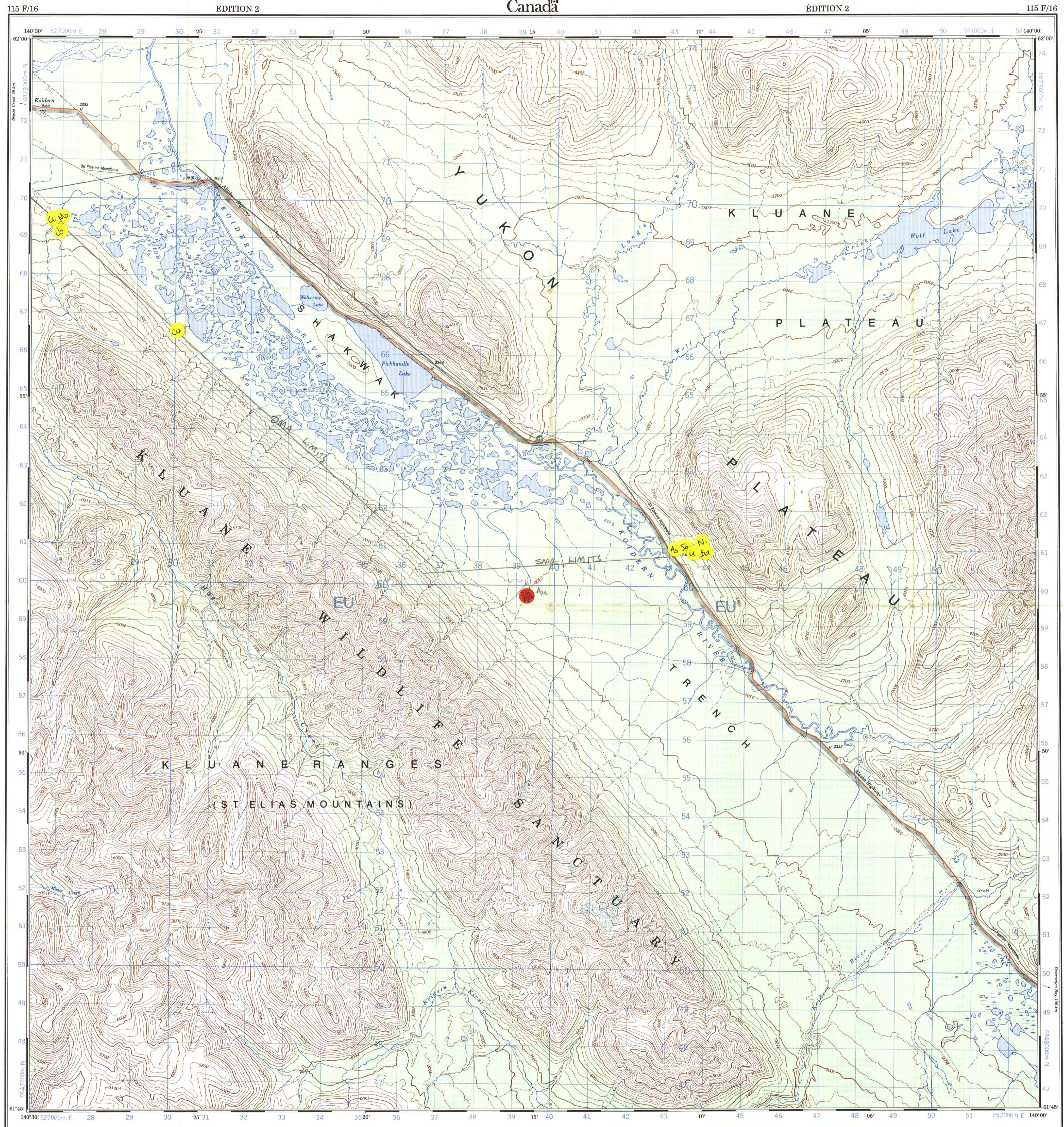
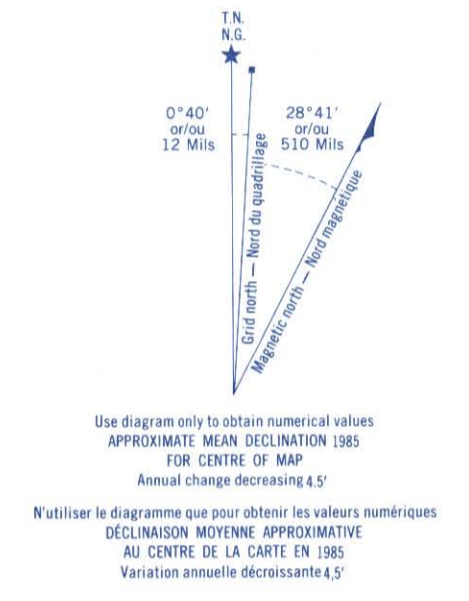


Pickhandle

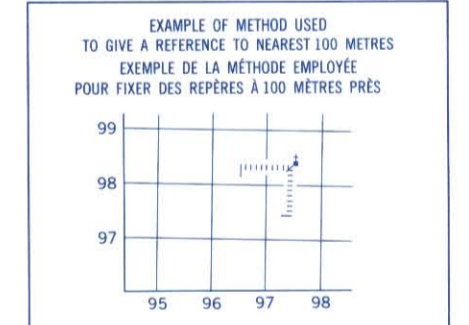


Military users, refer to this map as: Références de cette carte pour usage militaire. SERIES A 722 SERIE MAP 115 F/16 CARTE EDITION 2 MCE EDITION



ONE THOUSAND METRE UNIVERSAL TRANSVERSE MERCATOR GRID ZONE 7 QUADRILLE UNIVERSELLE TRANSVERSE DE MERCATOR DE MILLE METRES

Grid zone designation table with columns for 'GRID ZONE DESIGNATION' and '100 000 m SQUARE IDENTIFICATION'. It shows '7U' and 'EU' in a grid.



REFERENCE POINT CHURCH - EGLISE (see above) POINT DE REFERENCE (ci-dessus) (EASTING) Read number on grid line immediately to left of point. (NORTHING) Read number on grid line immediately below point.

Index table showing map sheet coordinates. Columns include Easting (141°00', 142°00', 143°00') and Northing (61°45', 61°50', 61°55'). A central box highlights '115 F/16'.

Produced by the SURVEYS AND MAPPING BRANCH, DEPARTMENT OF ENERGY, MINES AND RESOURCES. Updated from aerial photographs taken in 1979. Culture check 1981. Published in 1986.

Scale 1:50,000. Includes a graphic scale bar in meters and feet, and a legend for various symbols like roads, trails, and contour lines.

KOIDERN YUKON TERRITORY TERRITOIRE DU YUKON

Scale 1:50,000 Échelle. Includes a graphic scale bar in meters and feet.

Information concerning bench marks and horizontal survey measurements can be obtained from Geodetic Survey, Surveys and Mapping Branch, Ottawa. Conversion scale for elevations: Metres 30 20 10 0 100 200 300 400 500 600 700 800 900 1000. Feet 100 50 0 100 200 300 400 500 600 700 800 900 1000.

Fraité par la DIRECTION DES LEVÉS ET DE LA CARTOGRAPHIE, MINISTÈRE DE L'ÉNERGIE, DES MINES ET DES RESSOURCES. Mise à jour à partir de photographies aériennes prises en 1979. Vérification des ouvrages en 1981. Publié en 1986.

Scale 1:50,000. Includes a graphic scale bar in meters and feet, and a legend for various symbols like roads, trails, and contour lines.

007447 KOIDERN 115 F/16 EDITION 2 ENERGY, MINES AND RESOURCES CANADA ÉNERGIE, MINES ET RESSOURCES CANADA