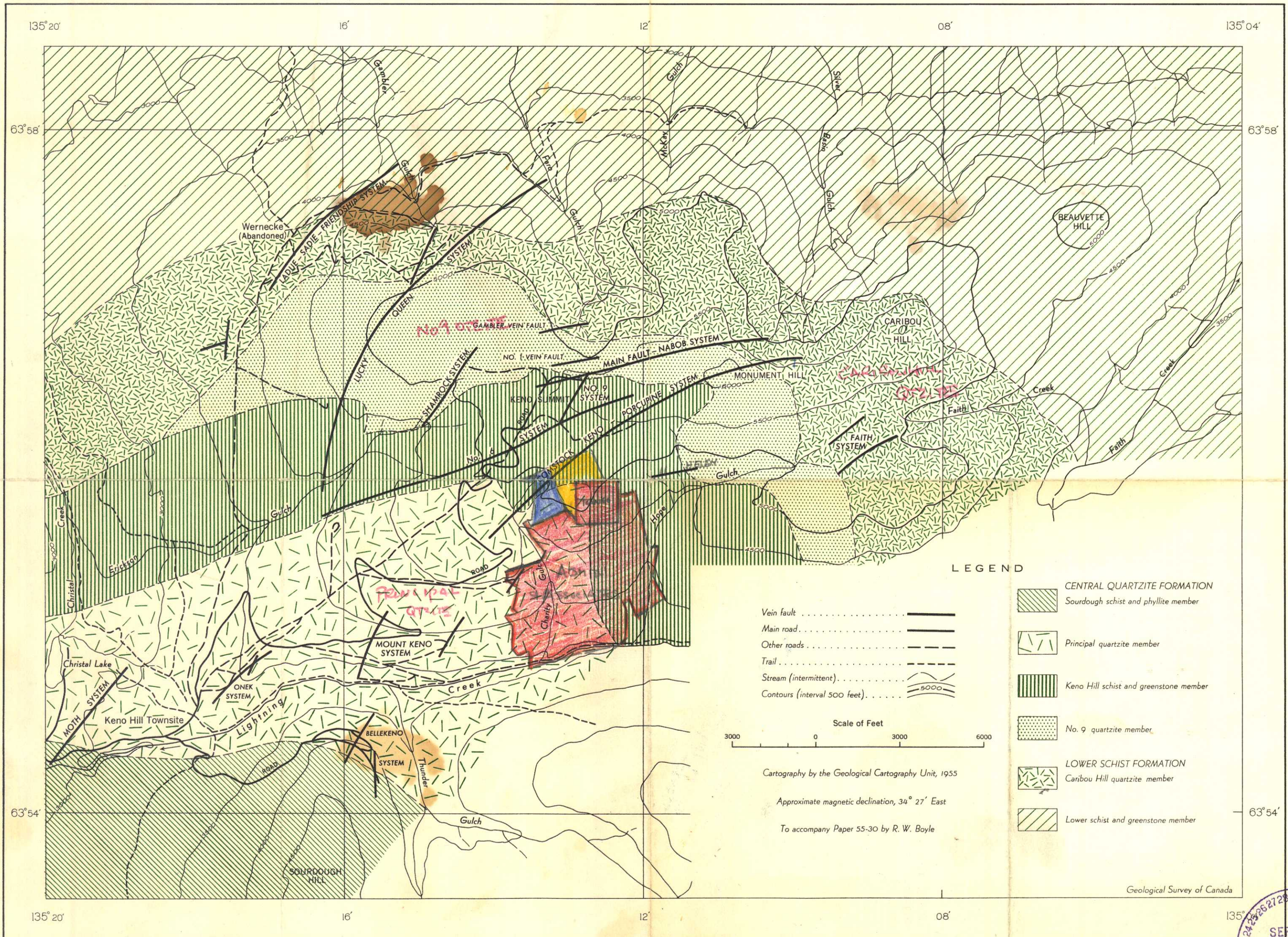


528  
1320  
600

2640  
2112  
4752

2640  
750  
3420  
264  
8  
2172  
5180  
528  
5508



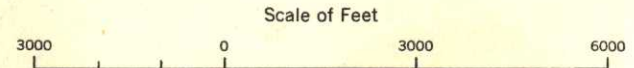
CALENA  
MILL

10501

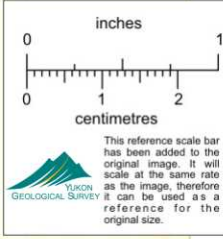
LEGEND

- Vein fault . . . . .
- Main road . . . . .
- Other roads . . . . .
- Trail . . . . .
- Stream (intermittent) . . . . .
- Contours (interval 500 feet) . . . . .

- CENTRAL QUARTZITE FORMATION
- Sourdough schist and phyllite member
- Principal quartzite member
- Keno Hill schist and greenstone member
- No. 9 quartzite member
- LOWER SCHIST FORMATION
- Caribou Hill quartzite member
- Lower schist and greenstone member



Cartography by the Geological Cartography Unit, 1955  
 Approximate magnetic declination, 34° 27' East  
 To accompany Paper 55-30 by R. W. Boyle



Geological Survey of Canada

PUBLISHED, 1956

Figure 2. Index map showing stratigraphic members and principal vein fault systems, Keno Hill, Yukon Territory

007478

Boyle 55-30-1957



Printed by the Surveys and Mapping Branch